

Allez

A new generation
of café chairs

normann

C O P E N H A G E N

For new, meaningful moments

Normann Copenhagen presents its first component-based chair based on a 'knock down' principle and made in pure polypropylene for both indoor and outdoor use. The Allez chair invites you to take a break from a hectic urban lifestyle, where space is often limited and mobile design is key.

The design of the Allez chair alludes to the French city life and bistro culture that emerged in the late 1800s and has since become a popular way of life all over the world. In the wake of the Wiener chair, the very symbol of café culture, time has made space for a new generation of café-inspired chairs like the Allez.



normann

C O P E N H A G E N

Collection overview



Allez chair

H: 79 x L: 45 x D: 50 x SH: 45,5 cm



**Allez chair
Molded wicker seat**

H: 79 x L: 45 x D: 50 x SH: 45,5 cm



**Allez chair upholstery
Main Line Flax**

H: 79 x L: 45 x D: 50 x SH: 45,5 cm



**Allez chair upholstery
Canvas**

H: 79 x L: 45 x D: 50 x SH: 45,5 cm



**Allez chair upholstery
Ultra leather**

H: 79 x L: 45 x D: 50 x SH: 45,5 cm



Allez chair oak

H: 79 x L: 45 x D: 50 x SH: 45,5 cm



**Allez chair oak
Molded wicker seat**

H: 79 x L: 45 x D: 50 x SH: 45,5 cm



**Allez chair upholstery oak
Main Line Flax**

H: 79 x L: 45 x D: 50 x SH: 45,5 cm



**Allez chair upholstery oak
Canvas**

H: 79 x L: 45 x D: 50 x SH: 45,5 cm



**Allez chair upholstery oak
Ultra leather**

H: 79 x L: 45 x D: 50 x SH: 45,5 cm



Product facts

Description

The Allez chair gives a contemporary look and feel to the traditional café chair's soft idiom and constructive strength in terms of design, functionality and sustainability. The design is suitable for both indoor and outdoor use.

Designer / Year Of Design

Simon Legald, 2021

Material

Main body in polypropylene (PP). Seat available in polyamide (PA), molded wicker polypropylene (PP) or indoor or outdoor upholstery. Legs available in polypropylene (PP) or lacquered oak. ►

normann

C O P E N H A G E N

► **Construction**

The Allez chair is a knock-down component-based chair consisting of seven main components of a frame, a seat, a backrest and four legs. The chair is suitable for indoor or outdoor use and all parts are replaceable. The Allez chair is gas-injection molded using pure polypropylene (PP) and weighs only 3.6 kg. The seat is available in polyamide (PA) with a subtle cut-out, molded wicker in PP or with upholstery for indoor or outdoor. The legs are available in PP or lacquered oak. The Allez chair is delivered flat-packed or can be ordered assembled. A small set of tools and an instruction manual are included.

Maintenance

Clean with a damp cloth.

Test

European standards Level 2
(EN 16139:2013 and EN 1022:2005).
ANSI/BIFMA X5.1 – 2017



normann

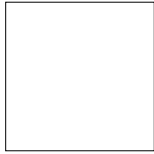
C O P E N H A G E N

Material options

Shell / Seat / Legs



Black



White



Grey



Warm grey



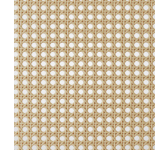
Park green

Wood legs



Oak

Molded wicker seat



Molded wicker

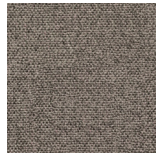
Upholstery (Follows color of chair)



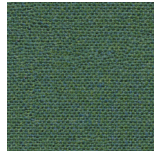
Black chair:
Camira
Main Line Flax
Black MLF28



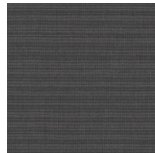
Warm grey chair:
Camira
Main Line Flax
MLF20



Grey chair:
Camira
Main Line Flax
MLF26



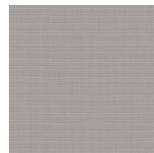
Park green chair:
Camira
Main Line Flax
MLF29



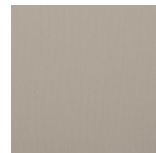
Black chair:
Sunbrella
Canvas
SJA 3705 137



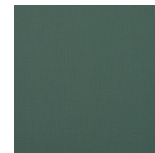
White chair:
Sunbrella
Canvas
SJA 3966 137



Grey chair:
Sunbrella
Canvas
SJA 3706 137



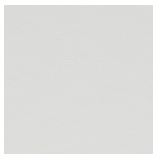
Warm grey chair:
Sunbrella
Canvas
SJA 3988 137



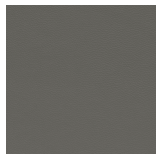
Park green chair:
Sunbrella
Canvas
SJA 3987 137



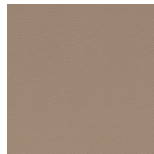
Black chair:
Sørensen Leather
Ultra
41599



White chair:
Sørensen Leather
Ultra
41594



Grey chair:
Sørensen Leather
Ultra
41575



Warm grey chair:
Sørensen Leather
Ultra
41584



normann

C O P E N H A G E N

Allez chair



normann

C O P E N H A G E N





normann
C O P E N H A G E N

Allez chair



normann

C O P E N H A G E N



Contact

Normann Copenhagen

Østerbrogade 70, 2100 Copenhagen, Denmark

normann@normann-copenhagen.com

+45 35 55 44 59

normann

C O P E N H A G E N