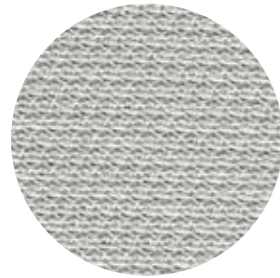


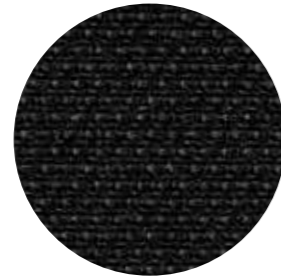
# Fabrics

## Tessuti

CATEGORY B / CATEGORIA B

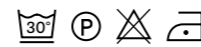


B 01



B 02

technical specifications / specifiche tecniche

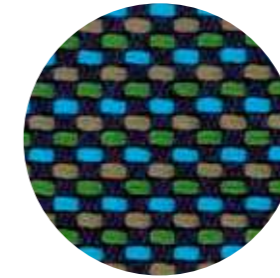


- **COMPOSITION / COMPOSIZIONE**  
100% Nylon (Support film PVC)
- **ABRASION / ABRASIONE**  
>50.000 cycles, Martindale (UNI EN ISO 12947:00)
- **RUBBING FASTNESS / SOLIDITÀ ALLO SFREGAMENTO**  
5, scale 1-5 (UNI EN ISO 105 X12:97)
- **PILLING**  
5, scale 1-5 (UNI EN ISO 12945-2:00)
- **LIGHT FASTNESS / SOLIDITÀ ALLA LUCE**  
5, scale 1-8 (UNI EN ISO 105-B02:01)

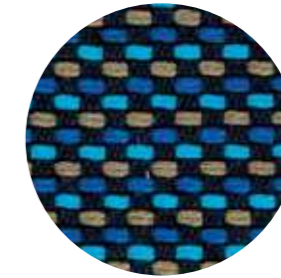
CATEGORY C / CATEGORIA C



C 37



C 38

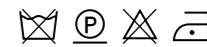


C 39



C 36

technical specifications / specifiche tecniche

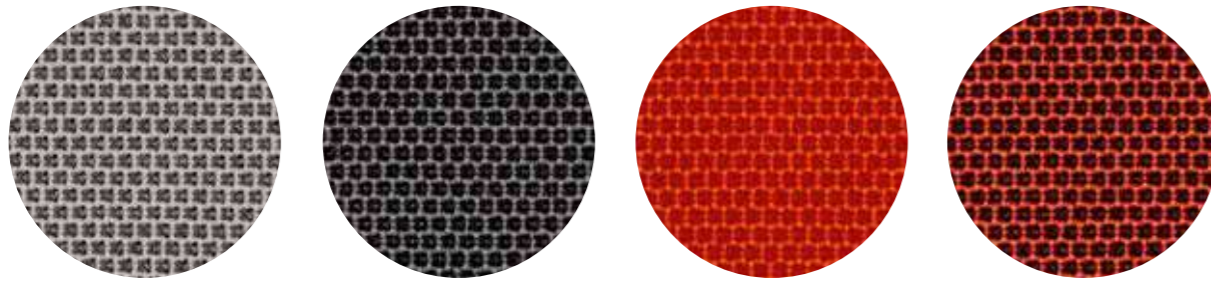


- **COMPOSITION / COMPOSIZIONE**  
94% Cotton  
6% Polyamide
- **ABRASION / ABRASIONE**  
40.000 cycles, Martindale (BS EN ISO 12947-2 1999)
- **RUBBING FASTNESS / SOLIDITÀ ALLO SFREGAMENTO**  
Dry 4-5 and Wet 2-3, scale 1-5 (BS EN ISO 105-X12:1995)
- **PILLING**  
4, scale 1-5 (BS EN ISO 12945-2:2001 to 5.000 cycles)
- **LIGHT FASTNESS / SOLIDITÀ ALLA LUCE**  
4-5 (light colours)  
5 (medium-dark colours) (BS EN ISO 105-B02:2001)

only for collection / solo per collezioni



Island

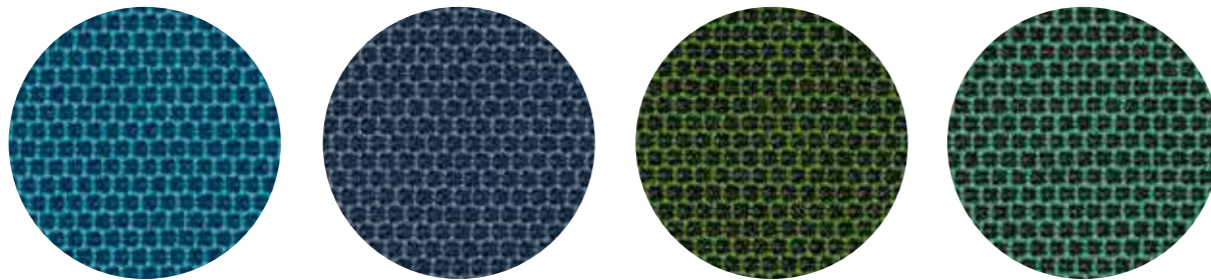


C 101

C 86

C 85

C 89

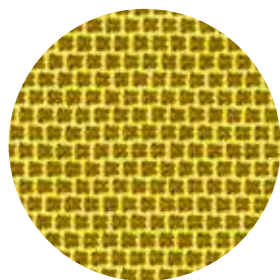


C 83

C 100

C 84

C 88



C 87

technical specifications / specifiche tecniche

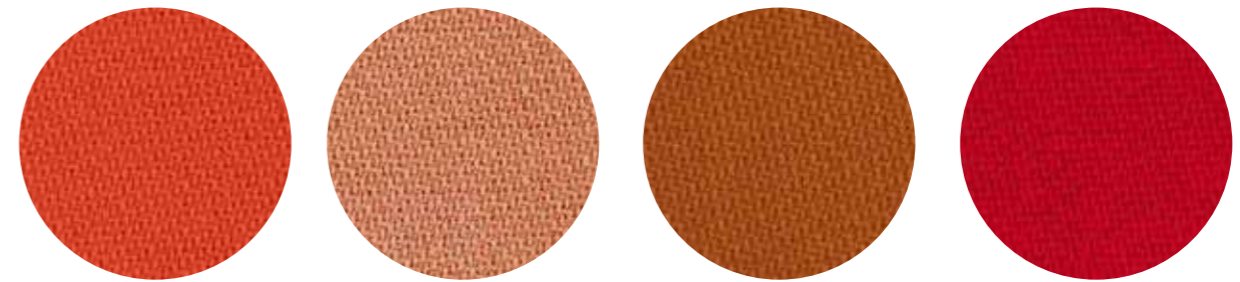


- COMPOSITION / COMPOSIZIONE  
54% New Zealand Wool  
44% Post-consumer recycled, polyester  
2% Polyamide
- ABRASION / ABRASIONE  
100.000 cycles, Martindale  
(EN ISO 12947-2)

- RUBBING FASTNESS / SOLIDITÀ ALLO SFREGAMENTO  
Dry and Wet 4-5, scale 1-5  
(EN ISO 105-X12:1995)
- PILLING  
4-5, scale 1-5 (EN ISO 12945-2)
- LIGHT FASTNESS / SOLIDITÀ ALLA LUCE  
5-7, scale 1-8 (EN ISO 105-B02)

- FLAME RESISTANCE  
RESISTENZA AL FUOCO  
BS EN 1021 1&2  
BS EN 1021-1  
BS 5852 Part 1 0, 1  
US CA TB 117-2013

- APPROVED / OMOLOGATO

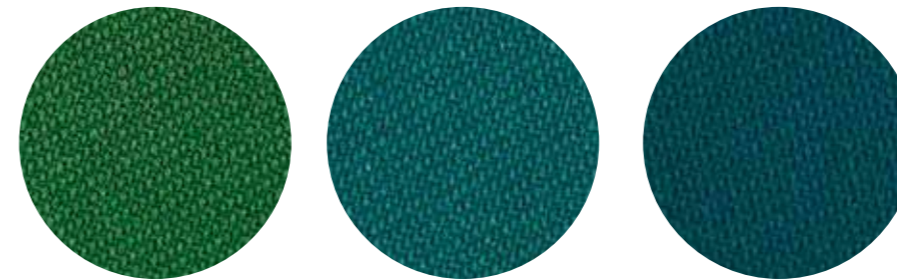


C 110

C 111

C 112

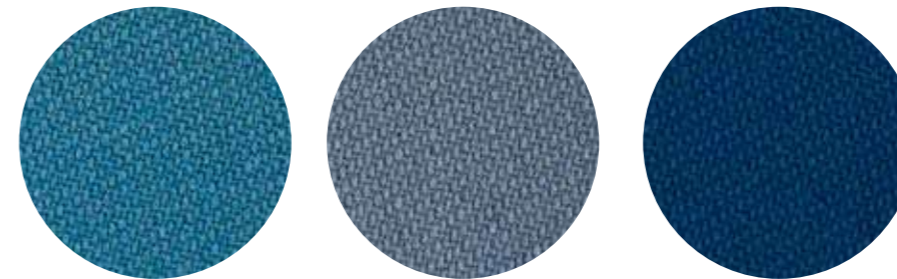
C 113



C 117

C 118

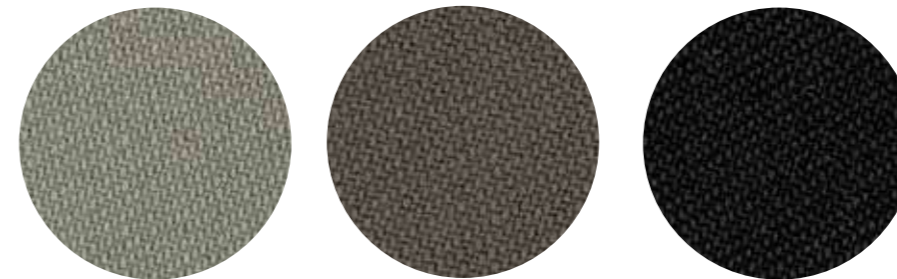
C 119



C 120

C 121

C 122



C 114

C 115

C 116

technical specifications / specifiche tecniche

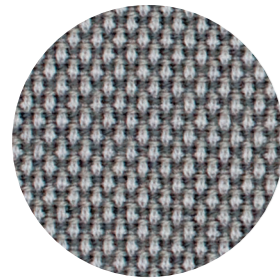
- APPROVED / OMOLOGATO



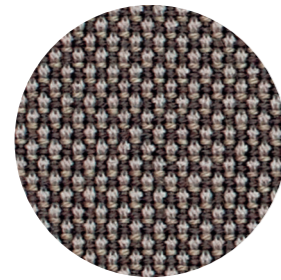
- COLLECTION / COLLEZIONE  
**svensson - SEMI**
- COMPOSITION / COMPOSIZIONE  
85% Wool, 15% Polyamide
- ABRASION / ABRASIONE  
100.000 cycles,  
Martindale  
(EN ISO 12947-2)
- RUBBING FASTNESS  
SOLIDITÀ ALLO SFREGAMENTO  
Dry 4 and Wet 3-4, scale 1-5  
(EN ISO 105-X12)
- LIGHT FASTNESS  
SOLIDITÀ ALLA LUCE  
5-7, scale 1-8  
(EN ISO 105-B02)
- FLAME RESISTANCE / RESISTENZA AL FUOCO  
BS 5852 Crib 5  
EN ISO 1021 Part 1&2  
IMO FTP Code 2010: Part 8  
UNI 9175 e UNI 9175/FA1 Classe 1 IM



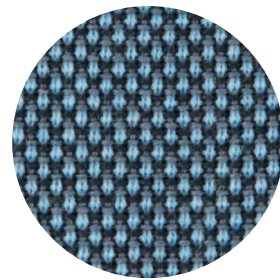
CATEGORY D / CATEGORIA D



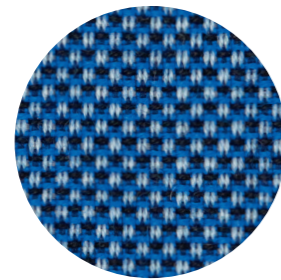
D 40



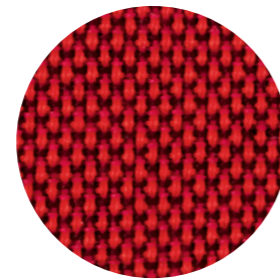
D 41



D 43



D 44



D 42

technical specifications / specifiche tecniche

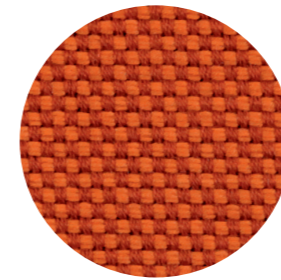


- **COMPOSITION / COMPOSIZIONE**  
88% New Zealand Wool  
12% Polyamide
- **ABRASION / ABRASIONE**  
100.000 cycles, Martindale  
(EN ISO 12947-2)
- **RUBBING FASTNESS / SOLIDITÀ ALLO SFREGAMENTO**  
Dry and Wet 4-5, scale 1-5  
(EN ISO 105-X12)
- **PILLING**  
4-5, scale 1-5 (EN ISO 12945-2)
- **LIGHT FASTNESS / SOLIDITÀ ALLA LUCE**  
5-7, scale 1-8 (EN ISO 105-B02)
- **FLAME RESISTANCE / RESISTENZA AL FUOCO**  
BS EN 1021 1&2  
BS 5852 Part 1 0, 1  
UNI 9175 Classe 1 IM  
US CA TB 117-2013

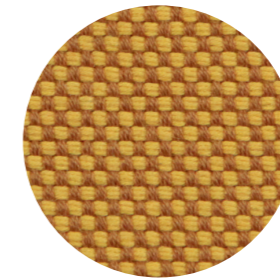
- APPROVED / OMOLOGATO



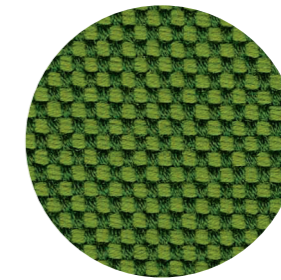
CATEGORY G / CATEGORIA G



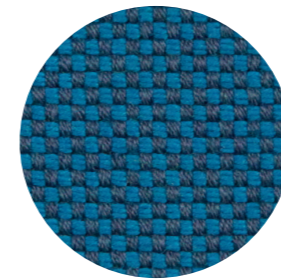
G 170



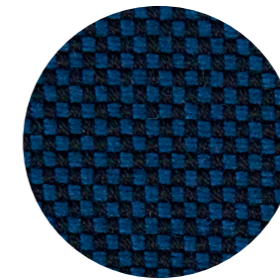
G 171



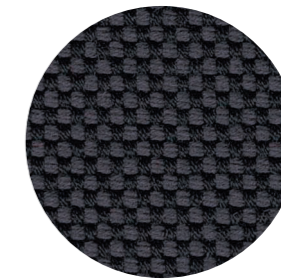
G 172



G 173



G 174



G 175



G 176

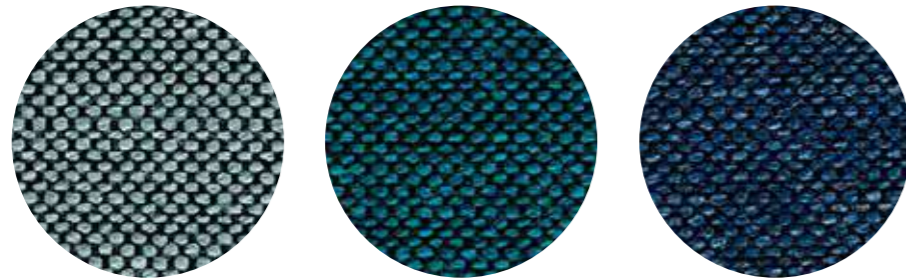
technical specifications / specifiche tecniche



- **COMPOSITION / COMPOSIZIONE**  
96% Virgin Wool  
4% Polyamide
- **ABRASION / ABRASIONE**  
90.000 cycles, Martindale  
(DIN EN ISO 12947-2)
- **PILLING**  
4-5, scale 1-5 (EN ISO 12945-2)
- **LIGHT FASTNESS / SOLIDITÀ ALLA LUCE**  
5-8, scale 1-8 (EN ISO 105-B02)
- **SOUND ABSORPTION / ASSORBIMENTO ACUSTICO**  
folded:  $\alpha_w = 0.95$  Class A (ISO 11654)
- **FLAME RESISTANCE / RESISTENZA AL FUOCO**  
BS 5852:1979 (Part 1)  
BS 5852:2006 (Part 2) Crib 5  
DIN 4102-1 B2
- **EN 13501-1**  
EN 1021 -1 and -2  
FAR 25.853 (12 sec. vertical)  
IMO: 2014/90/EU (MED)  
US CA TB 117-2013

- APPROVED / OMOLOGATO

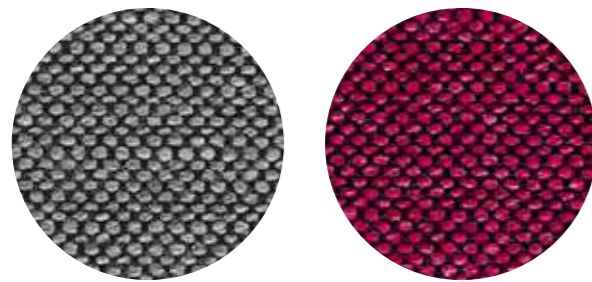




G 154

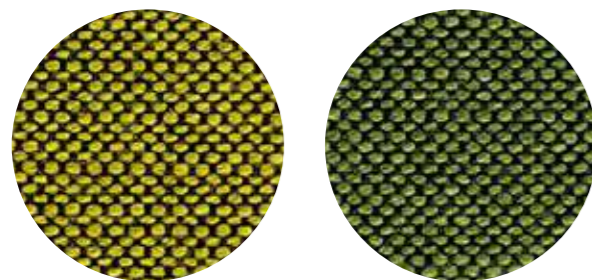
G 155

G 156



G 151

G 150



G 152

G 153

technical specifications / specifiche tecniche

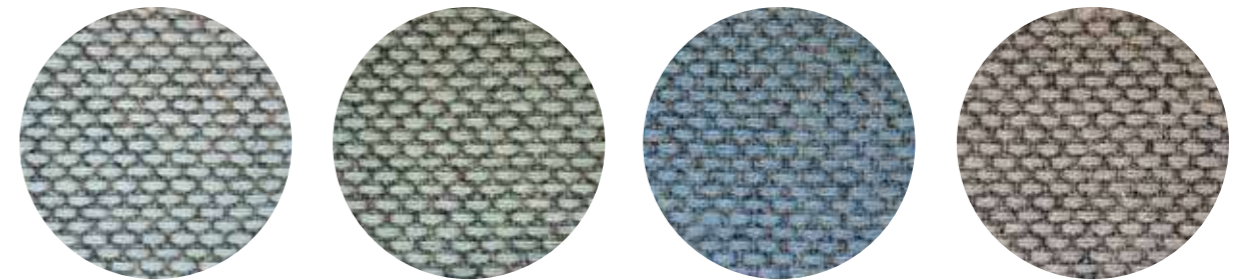


- COLLECTION / COLLEZIONE  
**svensson** - BALANCE
- COMPOSITION / COMPOSIZIONE  
82% Wool  
12% Rami  
6% Polyamide

- ABRASION / ABRASIONE  
100.000 cycles, Martindale (EN ISO 12947-2)
- RUBBING FASTNESS / SOLIDITÀ ALLO SFREGAMENTO  
Dry 4 and Wet 3-4, scale 1-5 (EN ISO 105-X12)
- LIGHT FASTNESS / SOLIDITÀ ALLA LUCE  
5-7, scale 1-8 (EN ISO 105-B02)

- FLAME RESISTANCE / RESISTENZA AL FUOCO  
BS 5852 Crib 5  
EN ISO 1021 Part 1&2  
IMO FTP Code 2010: Part 8  
UNI 9175 Classe 1 IM  
US CA TB 117-2013

- APPROVED / OMOLOGATO

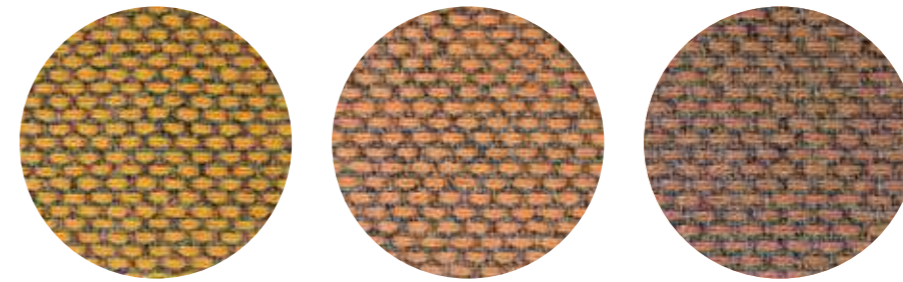


G 143

G 145

G 144

G 146



G 140

G 141

G 142

technical specifications / specifiche tecniche



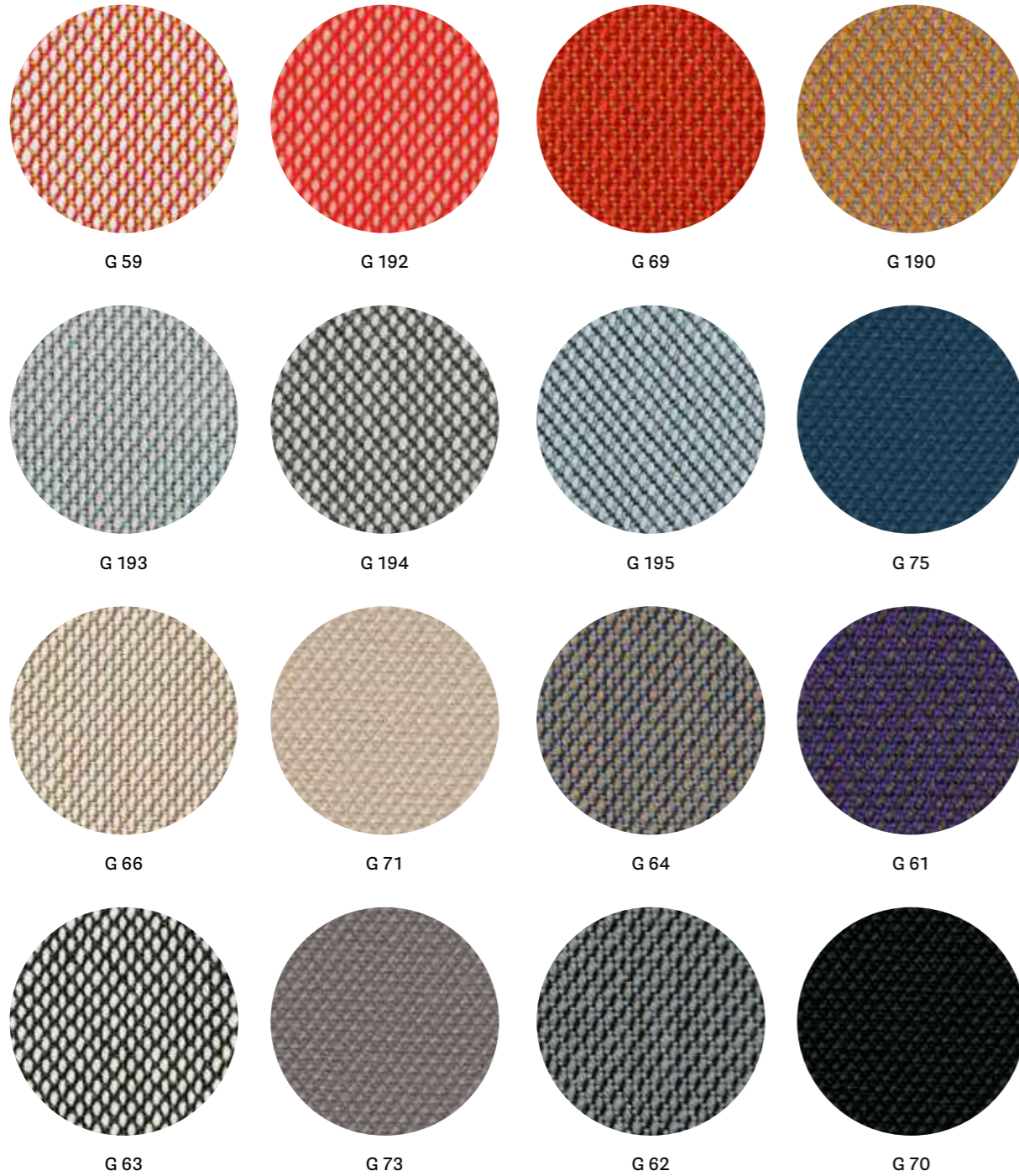
- COLLECTION / COLLEZIONE  
**kvadrat** - RE-WOOL  
DESIGNER Margrethe Odgaard
- COMPOSITION / COMPOSIZIONE  
45% Recycled wool  
45% New wool  
10% Nylon
- ABRASION / ABRASIONE  
50.000 cycles, Martindale (DS/EN ISO 12947-2:2016)

- RUBBING FASTNESS / SOLIDITÀ ALLO SFREGAMENTO  
Dry and Wet 4-5, scale 1-5 (ISO 105-X12)
- PILLING  
4, scale 1-5 (EN ISO 12945)
- LIGHT FASTNESS / SOLIDITÀ ALLA LUCE  
5-7, scale 1-8 (ISO 105-B02:2014)
- SOUND ABSORPTION / ASSORBIMENTO ACUSTICO  
folded:  $\alpha_w = 0.75$  Class C (ISO 11654)

- FLAME RESISTANCE / RESISTENZA AL FUOCO  
AS/NZS 1530.3  
BS 5852 Part 1  
BS 5852 Crib 5 with treatment  
BS 5852 IGNITION SOURCE 3  
EN 1021 - 1/2  
IMO FTP Code 2010: Part 8  
NF D60-013  
ÖNORM B1/Q1  
UNI 9175 Classe 1IM  
US CA TB 117-2013

- APPROVED / OMOLOGATO





G 59

G 192

G 69

G 190

G 193

G 194

G 195

G 75

G 66

G 71

G 64

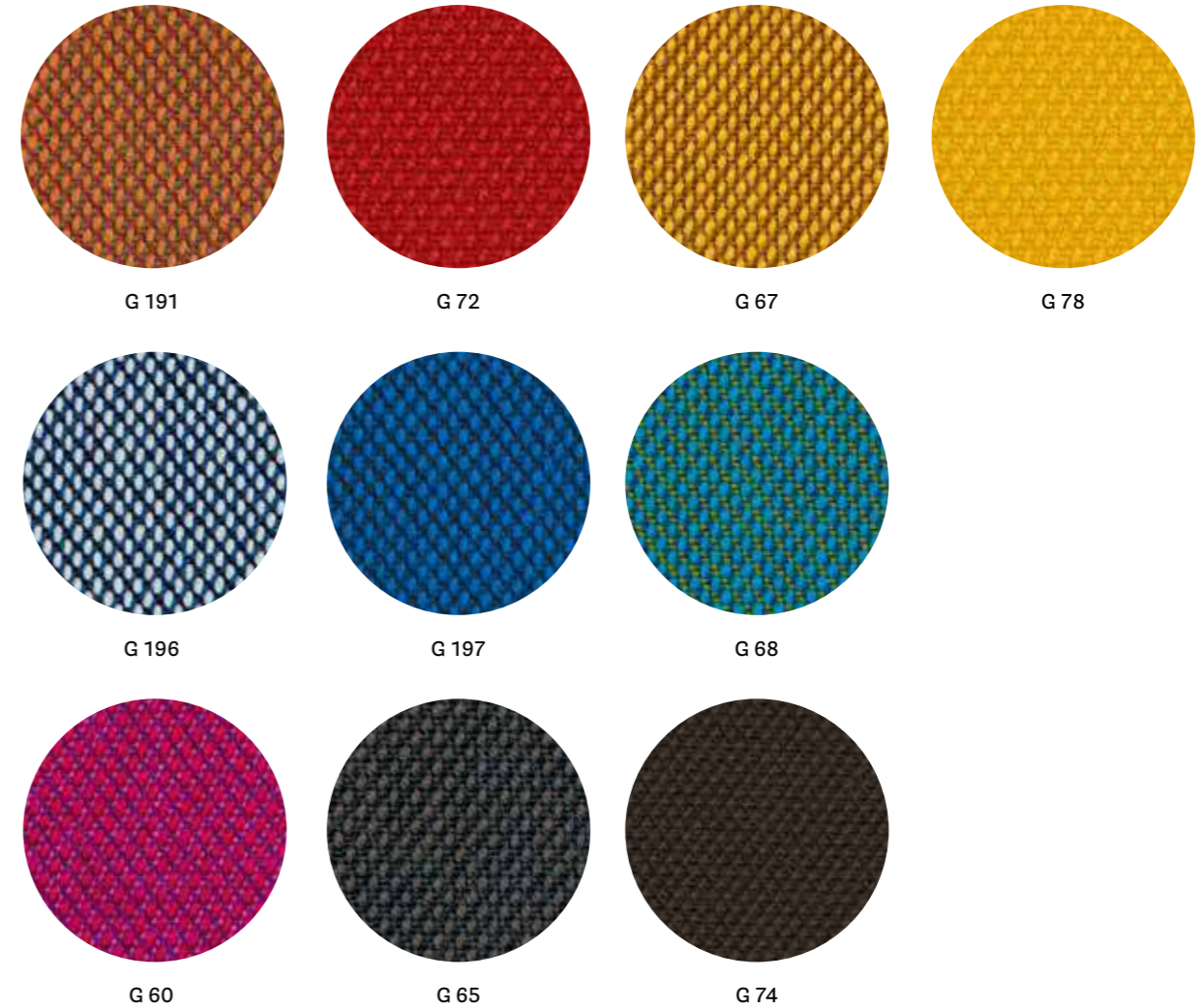
G 61

G 63

G 73

G 62

G 70



G 191

G 72

G 67

G 78

G 196

G 197

G 68

G 60

G 65

G 74

technical specifications / specifiche tecniche



• COLLECTION / COLLEZIONE

**kvadrat**

STEELCUT TRIO 3

except

G61, G60, G68: STEELCUT TRIO 2

G70+G78: STEELCUT 2

DESIGNERS Dijkmeijer & Ridolfo

• COMPOSITION / COMPOSIZIONE

90% New wool

10% Nylon

• ABRASION / ABRASIONE

100.000 cycles,

for G70+G78: 80.000 cycles

Martindale (DS/EN ISO 12947-2:2016)

• PILLING

4, scale 1-5

for G70+G78: 3-4, scale 1-5

(EN ISO 12945)

• LIGHT FASTNESS / SOLIDITÀ ALLA LUCE

5-7, scale 1-8 (EN ISO 105-B02)

• SOUND ABSORPTION / ASSORBIMENTO ACUSTICO

folded:  $\alpha_w = 0.95$  Class A

for G70+G78: folded:  $\alpha_w = 0.80$  Class B

(ISO 11654)

• FLAME RESISTANCE / RESISTENZA AL FUOCO

AS/NZS 1530.3

AS/NZS 3837 Class 2

BS 5852 Part 1

BS 5852 Crib 5 with treatment

DIN 4102 B2

EN 1021 - 1/2

IMO FTP Code 2010: Part 8

NF D60-013

NFPA 260

ÖNORM B1/Q1

SN 198 898 5.3 with treatment

UNI 9175 Classe 1 IM

US CA TB 117-2013

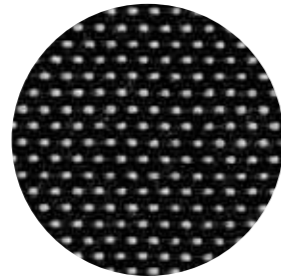
• APPROVED / OMOLOGATO



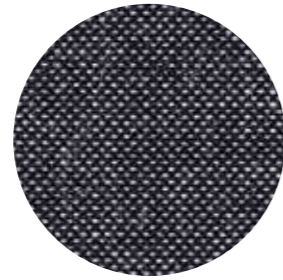
CATEGORY G / CATEGORIA G



G 101



G 100



G 102

technical specifications / specifiche tecniche



- COLLECTION / COLLEZIONE  
**kvadrat** - BASEL  
DESIGNERS Herzog & de Meuron
- COMPOSITION / COMPOSIZIONE  
90% New wool  
10% Nylon
- ABRASION / ABRASIONE  
50.000 cycles,  
Martindale (EN ISO 12947-2:1998)

- PILLING  
4, scale 1-5 (EN ISO 12945)
- LIGHT FASTNESS / SOLIDITÀ ALLA LUCE  
6-7, scale 1-8 (ISO 105-B02)
- FLAME RESISTANCE / RESISTENZA AL FUOCO  
AS/NZS 3837 Class 2  
BS 5852 Part 1  
BS 5852 Crib 5 with treatment

DIN 4102 B2  
EN 1021 - 1/2  
IMO FTP Code 2010: Part 8  
NFPA 260  
NF D60-013  
ÖNORM B1/Q1  
SN 198 898 5.3 with treatment  
UNI 9175 Classe 1 IM  
US CA TB 117-2013

- APPROVED / OMOLOGATO



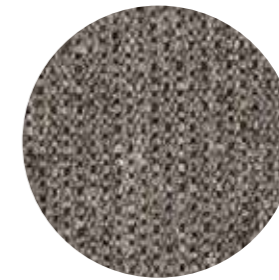
CATEGORY G / CATEGORIA G



G 120



G 121



G 122

technical specifications / specifiche tecniche



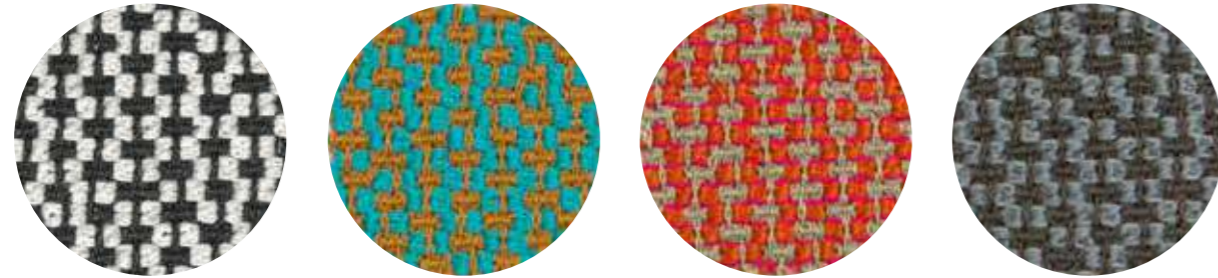
- COLLECTION / COLLEZIONE  
**kvadrat** - MOLLY 2  
DESIGNER Åsa Pärson
- COMPOSITION / COMPOSIZIONE  
100% New wool
- ABRASION / ABRASIONE  
75-100.000 cycles,  
Martindale (EN ISO 12947-2:1998)

- PILLING  
3-4, scale 1-5 (EN ISO 12945)
- LIGHT FASTNESS / SOLIDITÀ ALLA LUCE  
6-7, scale 1-8 (ISO 105-B02)
- FLAME RESISTANCE / RESISTENZA AL FUOCO  
BS 5852 Part 1  
BS 5852 Crib 5 with treatment  
DIN 4102 B2

EN 1021 - 1/2  
IMO FTP Code 2010: Part 8  
NFPA 260  
NF D60-013  
ÖNORM B1/Q1  
UNI 9175/UNI 9176 Classe 1 IM  
US CA TB 117-2013

- APPROVED / OMOLOGATO





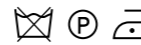
G 130

G 131

G 132

G 133

technical specifications / specifiche tecniche

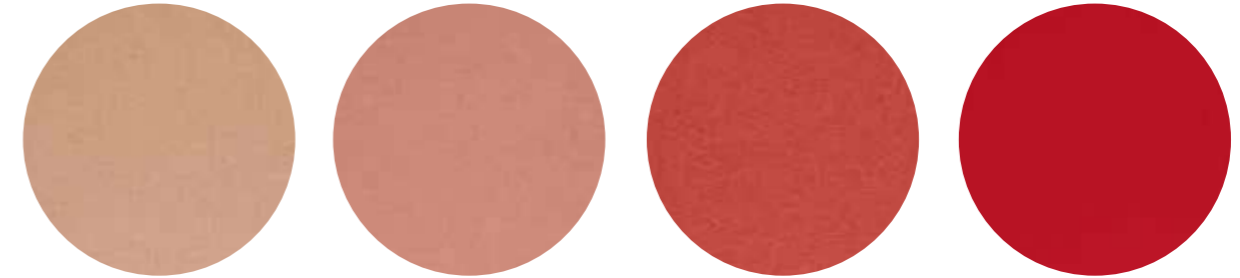


- COMPOSITION / COMPOSIZIONE  
95% Virgin Wool  
5% Polyamide
- ABRASION / ABRASIONE  
52.000 cycles, Martindale  
(DIN EN ISO 12947-2)
- PILLING  
4-5, scale 1-5 (EN ISO 12945-2)

- LIGHT FASTNESS / SOLIDITÀ ALLA LUCE  
5-8, scale 1-8 (EN ISO 105-B02)
- SOUND ABSORPTION / ASSORBIMENTO ACUSTICO  
folded:  $\alpha_w = 0.85$  Class B (ISO 11654)
- FLAME RESISTANCE / RESISTENZA AL FUOCO  
BS 5852:1979 (Part 1)  
BS 5852:2006 (Part 2) Crib 5  
DIN 4102-1 B2

EN 1021 -1 and -2  
EN 13501-1  
FAR 25.853 (12 sec. vertical)  
IMO: 2014/90/EU (MED)  
UNI 9175 Classe 1 IM  
US CA TB 117-2013

- APPROVED / OMOLOGATO

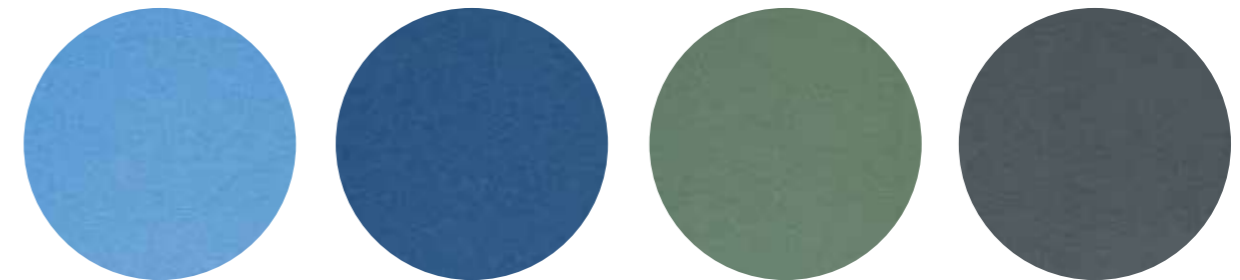


G 163

G 160

G 161

G 162

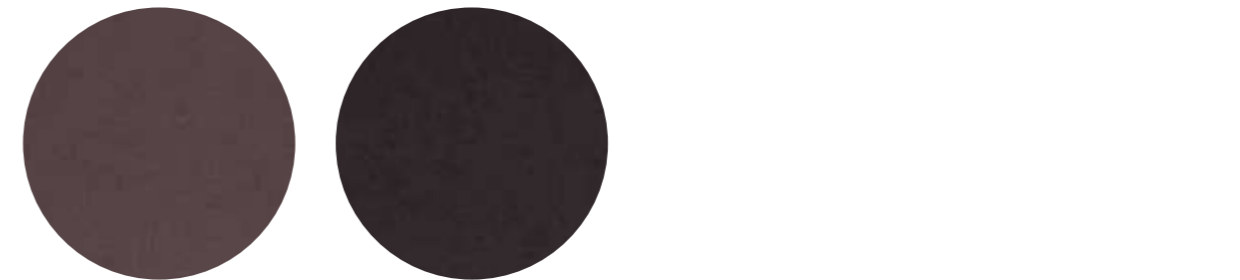


G 165

G 166

G 167

G 168



G 164

G 169

technical specifications / specifiche tecniche



- COLLECTION / COLLEZIONE  
**kvadrat** - HERO  
DESIGNER Patricia Urquiola
- COMPOSITION / COMPOSIZIONE  
96% New wool  
4% Nylon
- ABRASION / ABRASIONE  
45.000 cycles, Martindale  
(EN ISO 12947)
- PILLING  
3-4, scale 1-5 (EN ISO 12945)

- LIGHT FASTNESS / SOLIDITÀ ALLA LUCE  
5-6, scale 1-8 (ISO 105-B02)
- SOUND ABSORPTION / ASSORBIMENTO ACUSTICO  
folded:  $\alpha_w = 0.75$  Class C (ISO 11654)
- FLAME RESISTANCE / RESISTENZA AL FUOCO  
AS/NZS 3837 Class 2  
BS 5852 Crib 5 with treatment  
BS 5852 Part 1  
DIN 4102 B2  
EN 1021 - 1/2  
IMO FTP Code 2010: Part 8

NF D60-013  
NFPA 260  
SN 198 898 5.3 with treatment  
UNI 9175 Classe 1 IM  
US CA TB 117-2013

- APPROVED / OMOLOGATO





CATEGORY G / CATEGORIA G



G 24

G 114

G 115

G 113

G 111

G 116

G 110

G 112

G 21

G 25

G 22

G 23

technical specifications / specifiche tecniche



- COLLECTION / COLLEZIONE  
**kvadrat**  
G21, G22, G25: DIVINA MELANGE 2  
G24, G23: DIVINA MELANGE 3  
G110+G116: DIVINA MD  
DESIGNER Finn Skødt
- COMPOSITION / COMPOSIZIONE  
100% New Wool
- ABRASION / ABRASIONE  
45.000 cycles, Martindale  
(EN ISO 12947)
- PILLING  
3, scale 1-5 (EN ISO 12945)

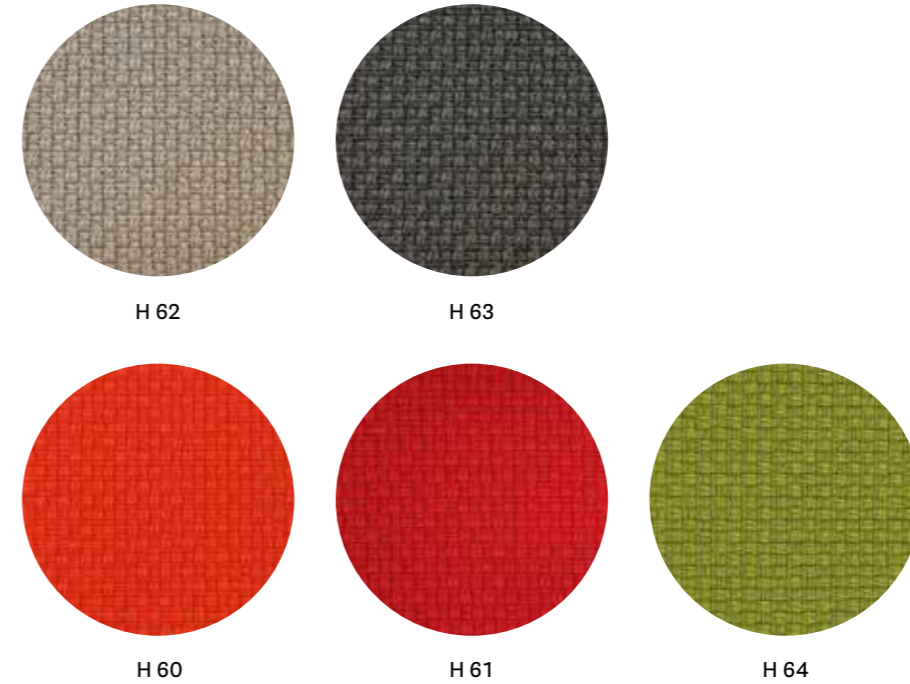
- LIGHT FASTNESS / SOLIDITÀ ALLA LUCE  
5-7, scale 1-8 (ISO 105-B02)
- SOUND ABSORPTION / ASSORBIMENTO ACUSTICO  
folded:  $\alpha_w = 0.70$  Class C (ISO 11654)
- FLAME RESISTANCE / RESISTENZA AL FUOCO  
AS/NZS 1530.3  
BS 5852 Crib 5  
BS 5852 Part 1  
BS 5867 part 2 type B (only for G23, G24)  
DIN 4102 B2  
EN 1021-1/2  
EN 13501, C-s1, d0, glued  
IMO FTP Code 2010: Part 8

NF D60013  
NFPA 260  
ÖNORM B1/ Q1  
SN 198 898 5.3 with treatment  
UNI 9175 Classe 1 IM  
US CA TB 117-2013

- APPROVED / OMOLOGATO



CATEGORY H / CATEGORIA H



H 62

H 63

H 60

H 61

H 64

technical specifications / specifiche tecniche



- COMPOSITION / COMPOSIZIONE  
92% New Zealand Wool  
8% Polyamide
- ABRASION / ABRASIONE  
200.000 cycles, Martindale  
(EN ISO 12947-2)

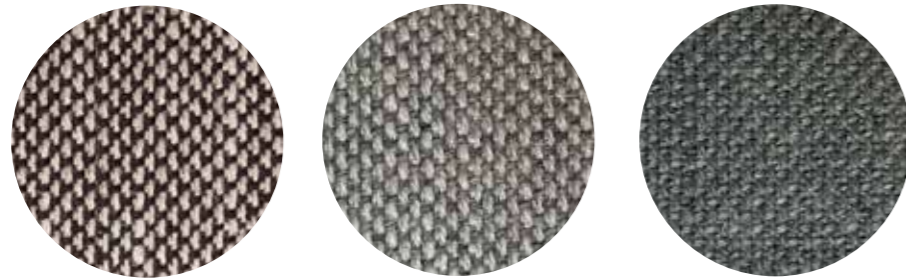
- RUBBING FASTNESS / SOLIDITÀ ALLO SFREGAMENTO  
Dry and Wet 4-5, scale 1-5  
(EN ISO 105-X12)
- PILLING  
4, scale 1-5 (EN ISO 12945-2)
- LIGHT FASTNESS / SOLIDITÀ ALLA LUCE  
5-7, scale 1-8 (EN ISO 105-B02)

- FLAME RESISTANCE / RESISTENZA AL FUOCO  
BS EN 1021 1&2  
BS EN 1021-1  
BS 5852 Part 1 0, 1  
UNI 9175 Classe 1 IM  
US CA TB 117-2013

- APPROVED / OMOLOGATO



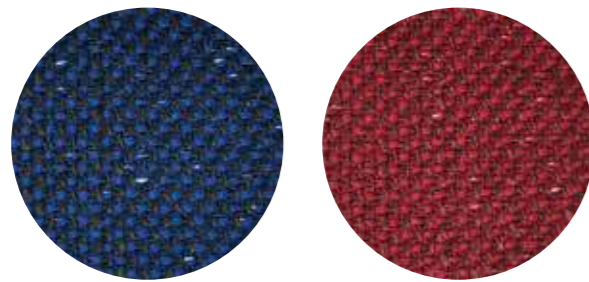
CATEGORY N / CATEGORIA N



N 05

N 01

N 02



N 03

N 04

technical specifications / specifiche tecniche



- COLLECTION / COLLEZIONE  
**kvadrat** - SUNNIVA 2  
DESIGNERS Raf Simons & Fanny Aronsen
- COMPOSITION / COMPOSIZIONE  
58% New wool  
25% Viscose  
8% Linen  
5% Polyamide  
4% Polyester

- ABRASION / ABRASIONE  
50.000 cycles, Martindale  
(EN ISO 12947)
- PILLING  
3, scale 1-5 (EN ISO 12945)
- LIGHT FASTNESS / SOLIDITÀ ALLA LUCE  
5-7, scale 1-8 (ISO 105-B02)

- FLAME RESISTANCE / RESISTENZA AL FUOCO  
AS/NZS 3837, class 2  
BS 5852 Part 1  
BS 5852 Crib 5 with treatment  
DIN 4102 B2  
EN 1021 - 1/2  
NFPA 260  
US CA TB 117-2013

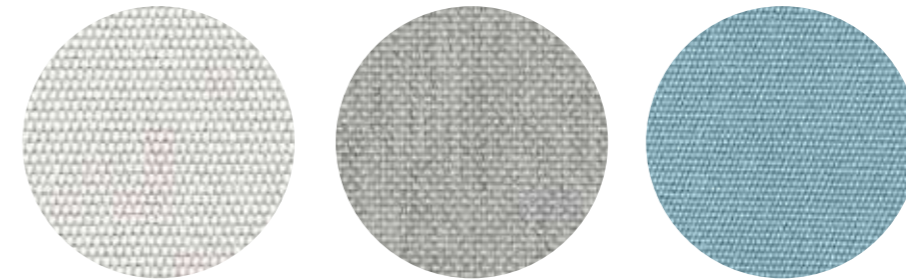
- APPROVED / OMOLOGATO



Outdoor



CATEGORY D / CATEGORIA D



D 37

D 38

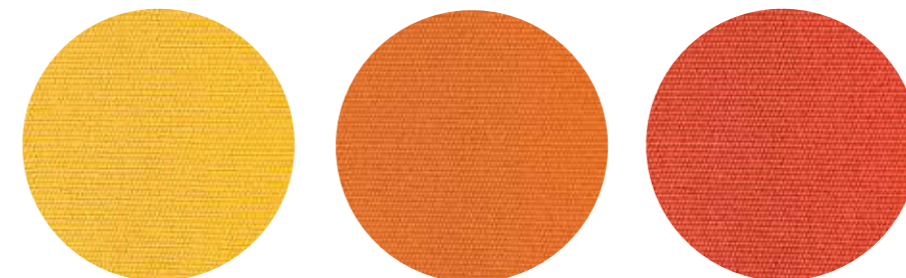
D 33



D 34

D 39

D 35



D 32

D 31

D 36

technical specifications / specifiche tecniche

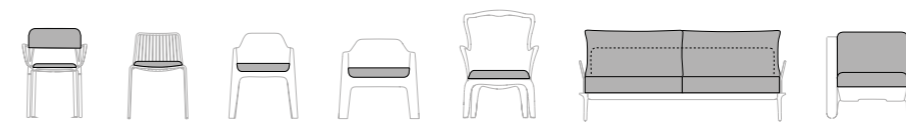


- COMPOSITION / COMPOSIZIONE  
100% Acrylic teflon

- ABRASION / ABRASIONE  
10.000 cycles, Martindale (EN ISO 12947)

- LIGHT FASTNESS / SOLIDITÀ ALLA LUCE  
7-8, scale 1-8 (EN ISO 105-B02)

for cushions only for collections / solo per cuscino delle collezioni



Intrigo

Nolita

Plus

Plus Air

Pasha

Reva

Sunset

Only for Nolita cushions: rim available in colours D34, D35 and D36 / Solo per cuscino Nolita: disponibile con bordino in diversi colori D34 D35 e D36

# Simil Leather

## Finta Pelle

CATEGORY A / CATEGORIA A

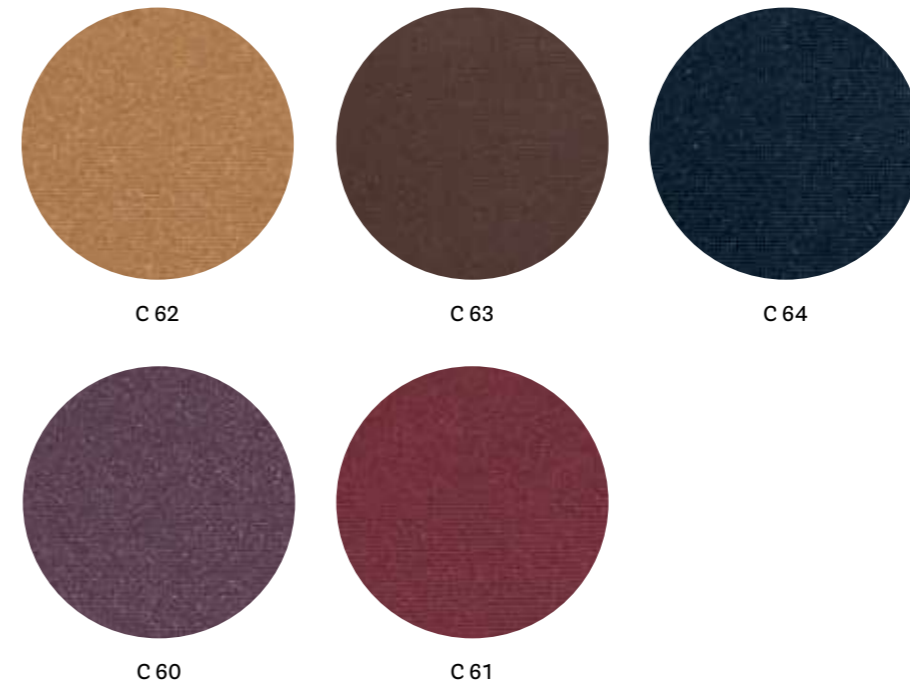


technical specifications / specifiche tecniche



- COMPOSITION / COMPOSIZIONE  
85% PVC  
15% Polyurethane
- ABRASION / ABRASIONE  
50.000 cycles, Martindale  
(UNI EN ISO 12947-2)
- RUBBING FASTNESS  
SOLIDITÀ ALLO SFREGAMENTO  
Dry and Wet 4-5, scale 1-5  
(UNI EN ISO 105-X12)
- LIGHT FASTNESS  
SOLIDITÀ ALLA LUCE  
6, scale 1-8  
(UNI EN ISO 105-B02)

CATEGORY C / CATEGORIA C

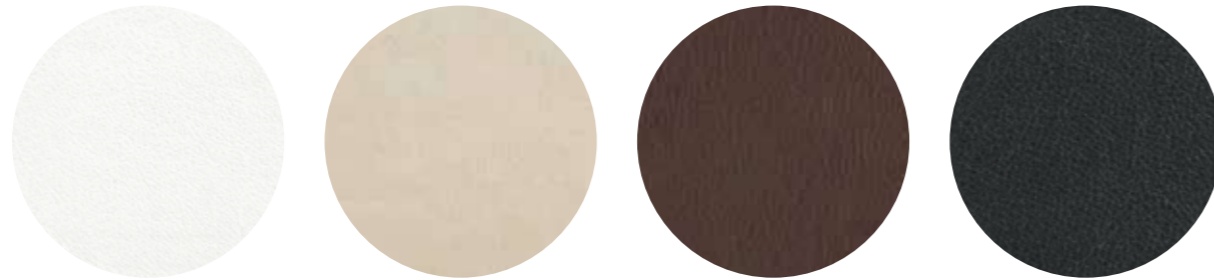


technical specifications / specifiche tecniche



- COMPOSITION / COMPOSIZIONE  
72% PVC  
25% Cotton  
3% Polyurethane
- ABRASION / ABRASIONE  
50.000 cycles, Martindale  
(EN ISO 5470-2)
- RUBBING FASTNESS / SOLIDITÀ ALLO SFREGAMENTO  
Dry and Wet 4-5, scale 1-5  
(UNI EN ISO 105-X12)
- LIGHT FASTNESS / SOLIDITÀ ALLA LUCE  
6, scale 1-8 (UNI EN ISO 105-B02)
- FLAME RESISTANCE / RESISTENZA AL FUOCO  
BS 5852-1 Part 1  
EN 1021-2  
IMO RESOLUTION A.652 (16): 1989  
UNI 9175 Classe 1 IM  
US CA TB 117-2013

CATEGORY C / CATEGORIA C

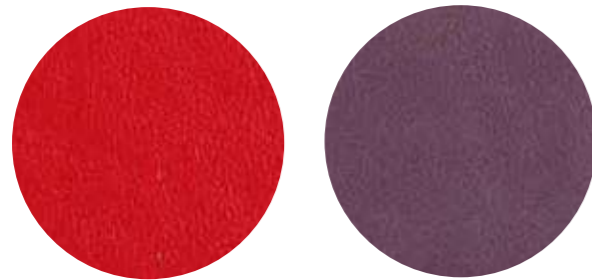


C 90

C 94

C 95

C 93



C 92

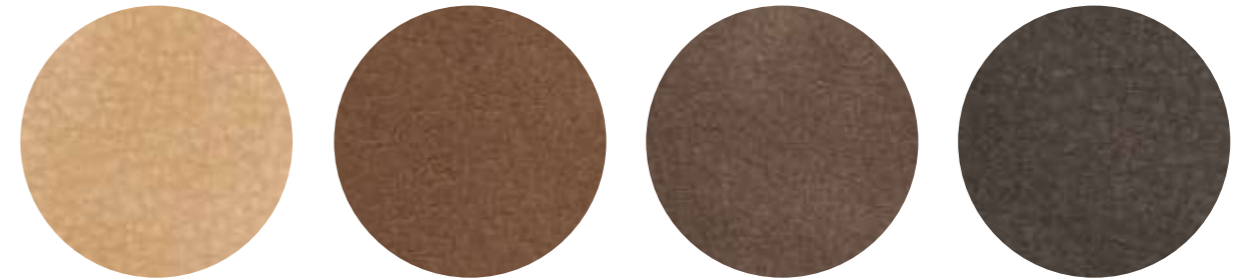
C 91

technical specifications / specifiche tecniche



- **COMPOSITION / COMPOSIZIONE**  
72% PVC  
25% Cotton  
3% Polyurethane
- **ABRASION / ABRASIONE**  
50.000 cycles, Martindale (EN ISO 5470-2)
- **RUBBING FASTNESS / SOLIDITÀ ALLO SFREGAMENTO**  
Dry and Wet 4-5, scale 1-5 (UNI EN ISO 105-X12)
- **LIGHT FASTNESS / SOLIDITÀ ALLA LUCE**  
6, scale 1-8 (UNI EN ISO 105-B02)
- **FLAME RESISTANCE / RESISTENZA AL FUOCO**  
BS 5852-1 Part 1  
EN 1021-2  
IMO RESOLUTION A.652 (16): 1989  
UNI 9175 Classe 1 IM  
US CA TB 117-2013

CATEGORY C / CATEGORIA C



C 45

C 46

C 47

C 48

technical specifications / specifiche tecniche



- **COMPOSITION / COMPOSIZIONE**  
80% PVC  
18% PES  
2% Polyurethane
- **ABRASION / ABRASIONE**  
50.000 cycles, Martindale (EN ISO 5470-2)
- **RUBBING FASTNESS / SOLIDITÀ ALLO SFREGAMENTO**  
Dry and Wet 4-5, scale 1-5 (UNI EN ISO 105-X12)
- **FLAME RESISTANCE / RESISTENZA AL FUOCO**  
BS 5852 Part 1 0,1  
EN 1021-1&2  
UNI 9175 Classe 1 IM



technical specifications / specifiche tecniche



- COMPOSITION / COMPOSIZIONE  
76% PVC  
22% PES  
2% Polyurethane
- ABRASION / ABRASIONE  
60.000 cycles, Martindale  
(ISO 5470-2)
- RUBBING FASTNESS / SOLIDITÀ ALLO SFREGAMENTO  
Dry and Wet 4-5, scale 1-5  
(ISO 105-X12)
- LIGHT FASTNESS / SOLIDITÀ ALLA LUCE  
6, scale 1-8 (ISO 105-B02)
- FLAME RESISTANCE / RESISTENZA AL FUOCO  
BS 5852-1 match test  
EN 1021 Part 1-2  
UNI 9175 Classe 1 IM  
US CA TB 117-2013



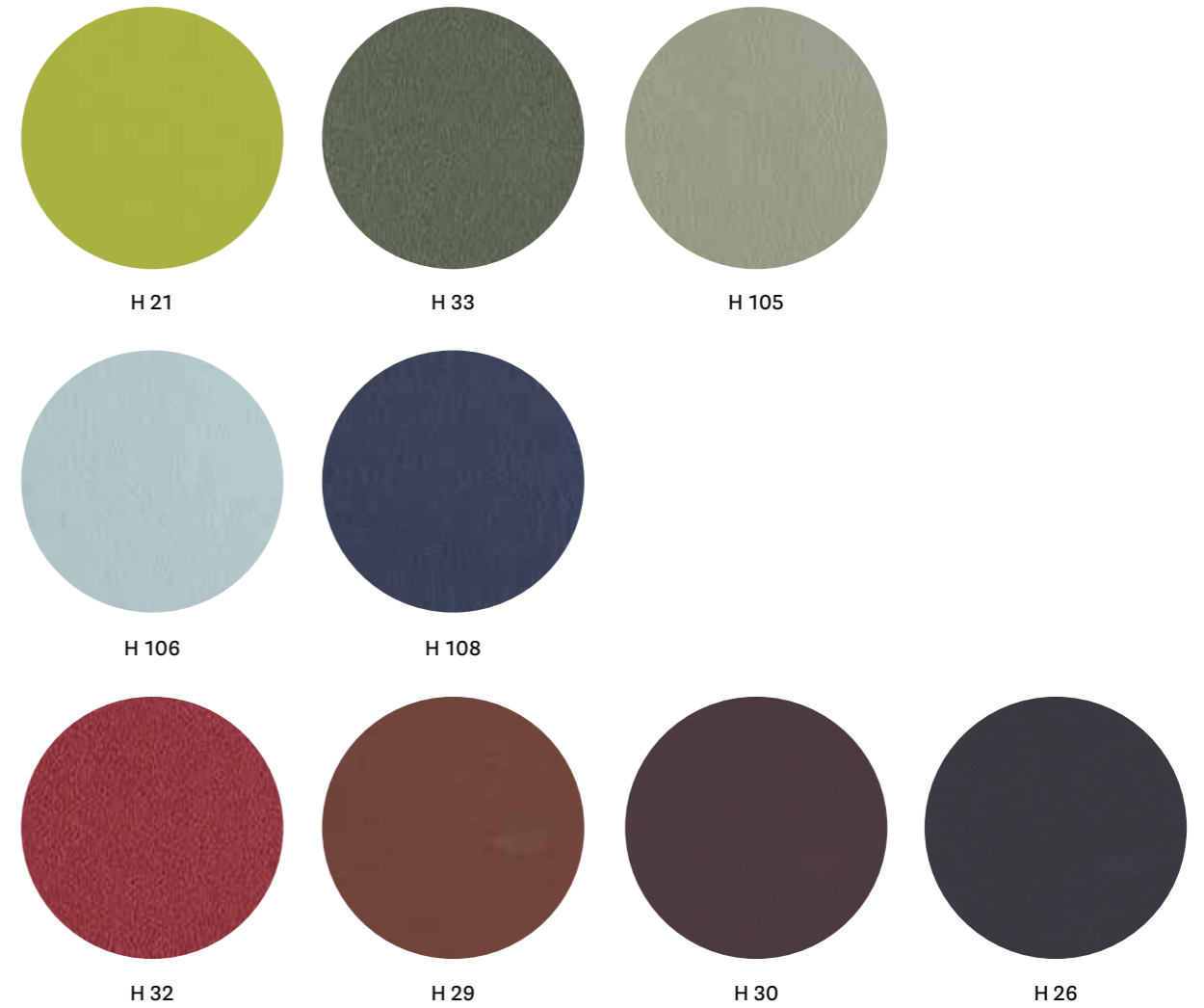
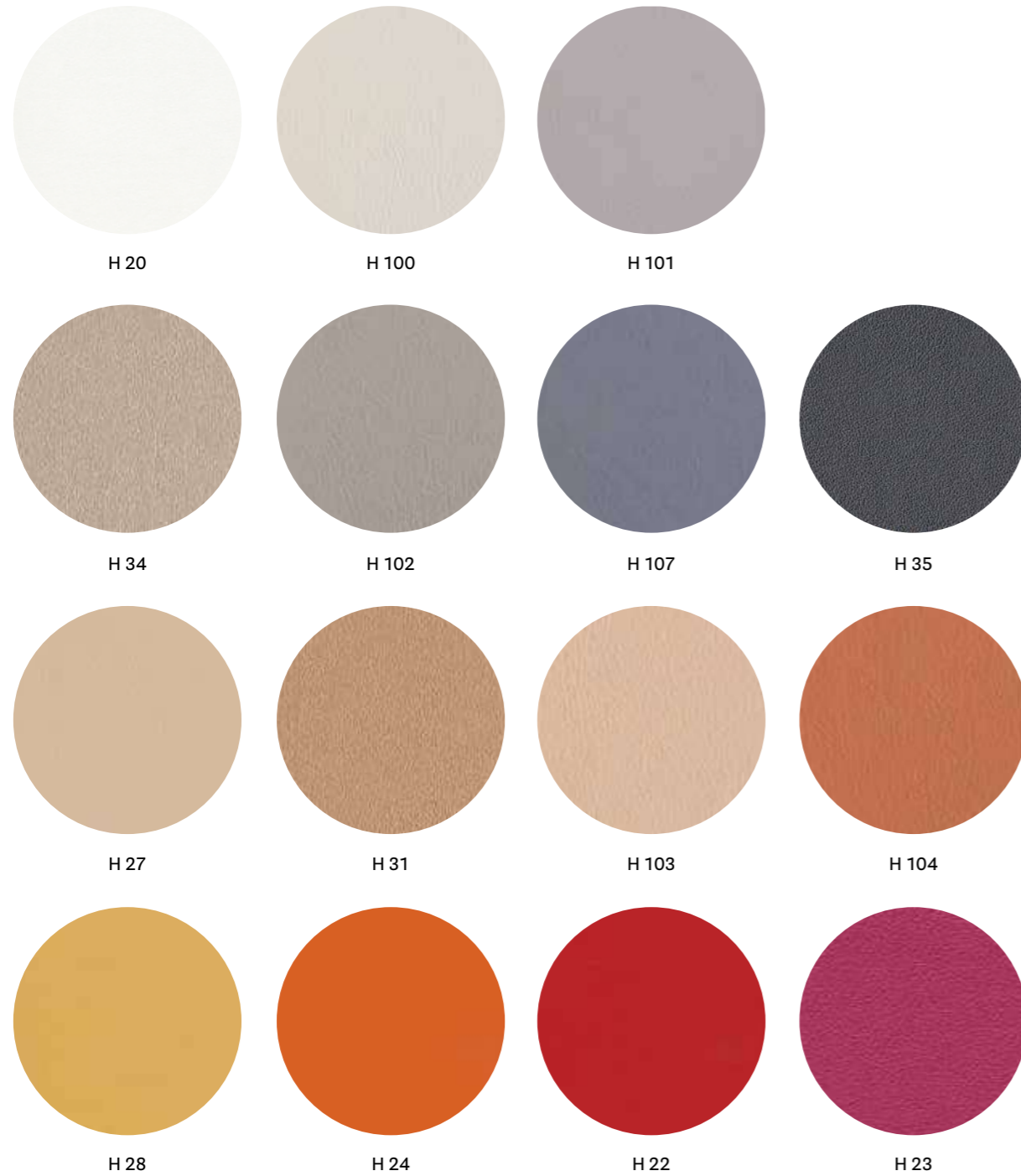
technical specifications / specifiche tecniche



- COMPOSITION / COMPOSIZIONE  
85% PVC  
15% Cotton
- ABRASION / ABRASIONE  
150.000 cycles, Martindale  
(ISO 5470-2)
- LIGHT FASTNESS / SOLIDITÀ ALLA LUCE  
≥6, scale 1-8(EN ISO 105-B02)
- FLAME RESISTANCE / RESISTENZA AL FUOCO  
B2 (DIN 4102)  
BS 5852 Crib 5  
EN 1021.1-2  
EN 13501-1 - Cs3do  
FAR 25853 App F Part 1
- IMO RESOLUTION A.652  
NF D60-013 - AM 18  
NFP 92503 M1  
NY/NJ - Port Authority  
UFAC Fabric Class 1  
German fire standard B1 (except C12 and C22)  
US CATB 117  
US CATB 133

- APPROVED / OMOLOGATO





technical specifications / specifiche tecniche



- COMPOSITION / COMPOSIZIONE  
63% Polyurethane  
29% Cotton  
8% PES
- ABRASION / ABRASIONE  
150.000 cycles, Martindale  
(UNI EN ISO 12947-2)

- LIGHT FASTNESS / SOLIDITÀ ALLA LUCE  
5-6, scale 1-8 (UNI EN ISO 105-B02)
- FLAME RESISTANCE / RESISTENZA AL FUOCO  
BS 5852 Crib 5  
BS 5852 Part 1-2  
EN 1021 Part 1-2  
IMO resolution FTP Code 2010

IMO resolution A.652 (16):1989  
UNI 9175 Classe 1 IM  
US CA TB 117-2013

# Leather Pelle

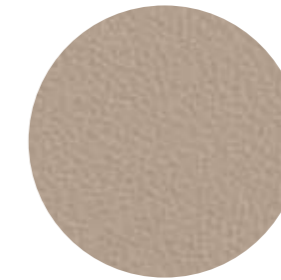
CATEGORY P / CATEGORIA P



PBI



PGC



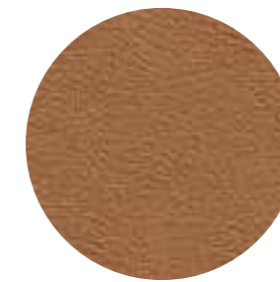
PSA



PGA



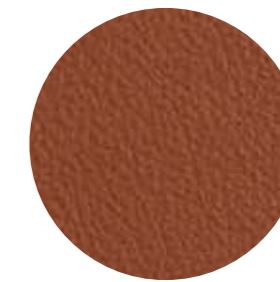
PBE



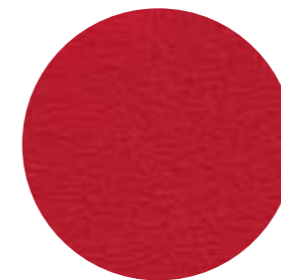
PGN



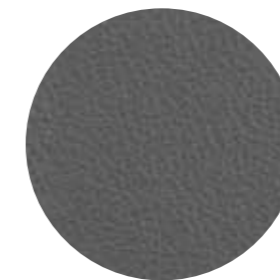
PTA



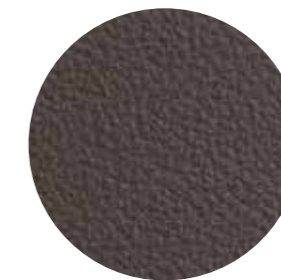
PTE



PRO



PGR



PMA



PNE

## technical specifications / specifiche tecniche

### • COLLECTION / COLLEZIONE



### • COMPOSITION / COMPOSIZIONE

Mid grain leather  
Pelle mezzo fiore

### • RUBBING FASTNESS / SOLIDITÀ ALLO SFREGAMENTO Dry (500 Cycles) and Wet (250 Cycles) ≥4 (UNI EN ISO 11640:1998)

- LIGHT FASTNESS / SOLIDITÀ ALLA LUCE  
≥5 (UNI EN ISO 105 B02) (MET.5)
- FLAME RESISTANCE / RESISTENZA AL FUOCO  
BS 5852:1979  
BS EN 1021-1-2:2006  
IMO RES A652 (16)

## cleaning / lavaggio

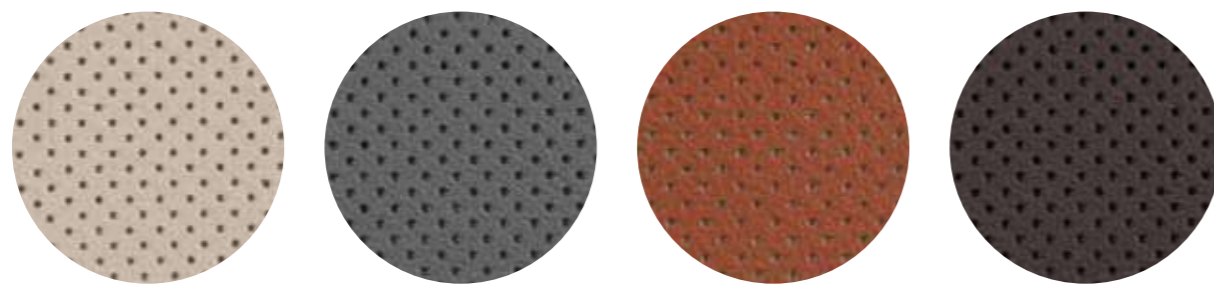
Clean with a damp cloth using water. Do not use detergents, solvents, bleached, abrasives. Pulire con un panno umido d'acqua. Non usare detersivi, solventi, candeggianti, abrasivi.

### • APPROVED / OMOLOGATO





CATEGORY P / CATEGORIA P



PGCF

PGRF

PTEF

PMAF

technical specifications / specifiche tecniche

• COLLECTION / COLLEZIONE



• COMPOSITION / COMPOSIZIONE

**Perforated mid grain leather**  
Pelle mezzo fiore traforata

- RUBBING FASTNESS / SOLIDITÀ ALLO SFREGAMENTO  
Dry (500 Cycles) and Wet (250 Cycles)  $\geq 4$   
(UNI EN ISO 11640:1998)

- LIGHT FASTNESS / SOLIDITÀ ALLA LUCE  
 $\geq 5$  (UNI EN ISO 105 B02) (MET.5)
- FLAME RESISTANCE / RESISTENZA AL FUOCO  
BS 5852:1979  
BS EN 1021-1-2:2006  
IMO RES A652 (16)

cleaning / lavaggio

**Clean with a damp cloth using water. Do not use detergents, solvents, bleached, abrasives.**  
Pulire con un panno umido d'acqua. Non usare detersivi, solventi, candeggianti, abrasivi.

• APPROVED / OMOLOGATO



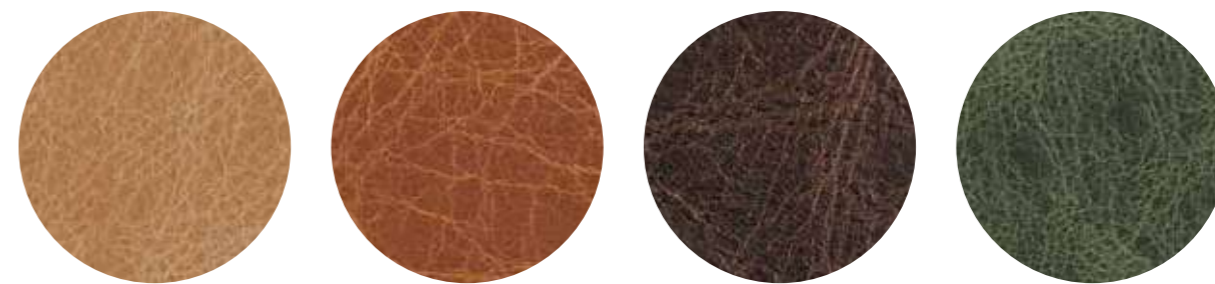
only for collection / solo per collezioni



**Inner part of the back, upper part of the seat.**  
Lato interno dello schienale e parte superiore del sedile.

Vic / Vic Metal

CATEGORY P / CATEGORIA P



PBS

PCO

PMS

PVE

technical specifications / specifiche tecniche

• COLLECTION / COLLEZIONE



• COMPOSITION / COMPOSIZIONE

**Vintage mid grain leather**  
Pelle mezzo fiore anticata

- RUBBING FASTNESS / SOLIDITÀ ALLO SFREGAMENTO  
Dry (50 Cycles) and Wet (20 Cycles)  $\geq 3$   
(EN ISO 11640:1998)
- LIGHT FASTNESS / SOLIDITÀ ALLA LUCE  
 $\geq 2/3$  (EN ISO 105-B02) (MET.5)
- FLAME RESISTANCE / RESISTENZA AL FUOCO  
BS 5852:1979  
BS EN 1021-1-2:2006

cleaning / lavaggio

**Clean with warm and damp cloth. Do not use detergents, solvents, bleached, abrasives.**  
Pulire con acqua calda e un panno umido. Non usare detersivi, solventi, candeggianti, abrasivi.

only for collections / solo per collezioni



Malmö

Inga

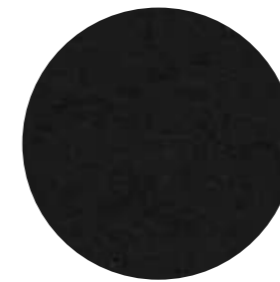
# Hard leather

## Cuoio

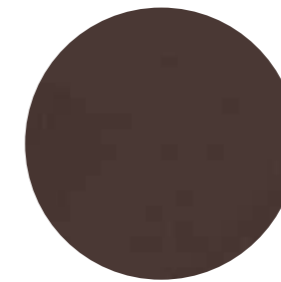
CATEGORY F / CATEGORIA F



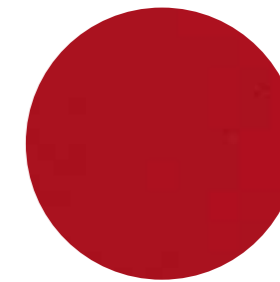
F 07



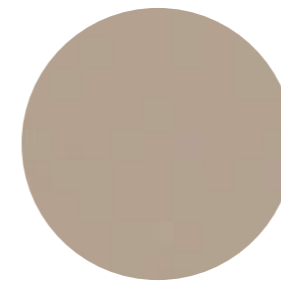
F 05



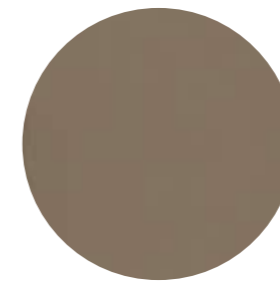
F 01



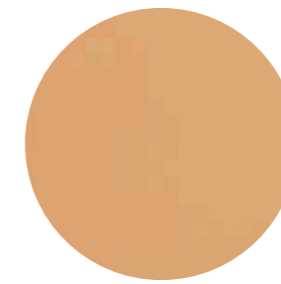
F 06



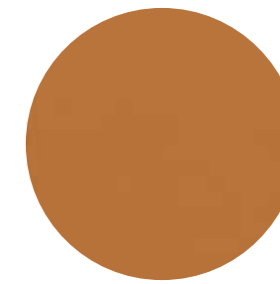
F 09



F 08



F 03



F 04

### technical specifications / specifiche tecniche

- **COMPOSITION / COMPOSIZIONE**  
Genuine leather, tanned with vegetable substances.  
Cuoio naturale, conciato con sostanze vegetali.

- **RUBBING FASTNESS / SOLIDITÀ ALLO SFREGAMENTO**  
Satisfactory up to maximum 700 abrasions in humid environment and 1000 abrasions in dry environment.  
Soddisfacente sino a max 700 abrasioni all'umido e 1000 abrasioni al secco.

### cleaning / lavaggio

Clean with a damp cloth using water.  
Pulire con un panno umido d'acqua.

### only for collections / solo per collezioni



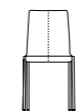
Fox



Gliss



Inga



Kuadra



Kuadra XL



Malmö



Mood



Woody

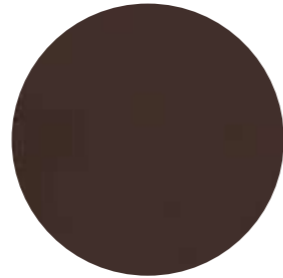
CATEGORY F / CATEGORIA F



F 18



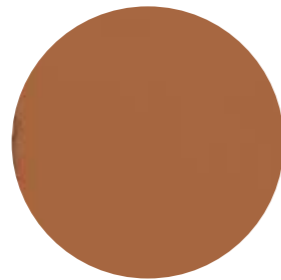
F 11



F 12



F 19



F 13



F 17

technical specifications / specifiche tecniche

- **COMPOSITION / COMPOSIZIONE**  
Regenerated hide leather.  
Tanned leather cuttings and shavings linked with natural rubber lattelx.  
Cuoio rigenerato. Ritagli e rasatura di cuoio conciato legati con lattice di gomma naturale.

- **ABRASION / ABRASIONE**  
Dry and wet >1000 (UNI EN ISO 7724)
- **LIGHT FASTNESS / SOLIDITÀ ALLA LUCE**  
4-5 Xenotest Method
- **FLAME RESISTANCE / RESISTENZA AL FUOCO**  
BS EN 1021 1&2  
BS 5852 Part 1  
US CA TB 117 E Part 1

cleaning / lavaggio

Clean with a damp cloth using water.  
Pulire con un panno umido d'acqua.

only for collections / solo per collezioni



Inga

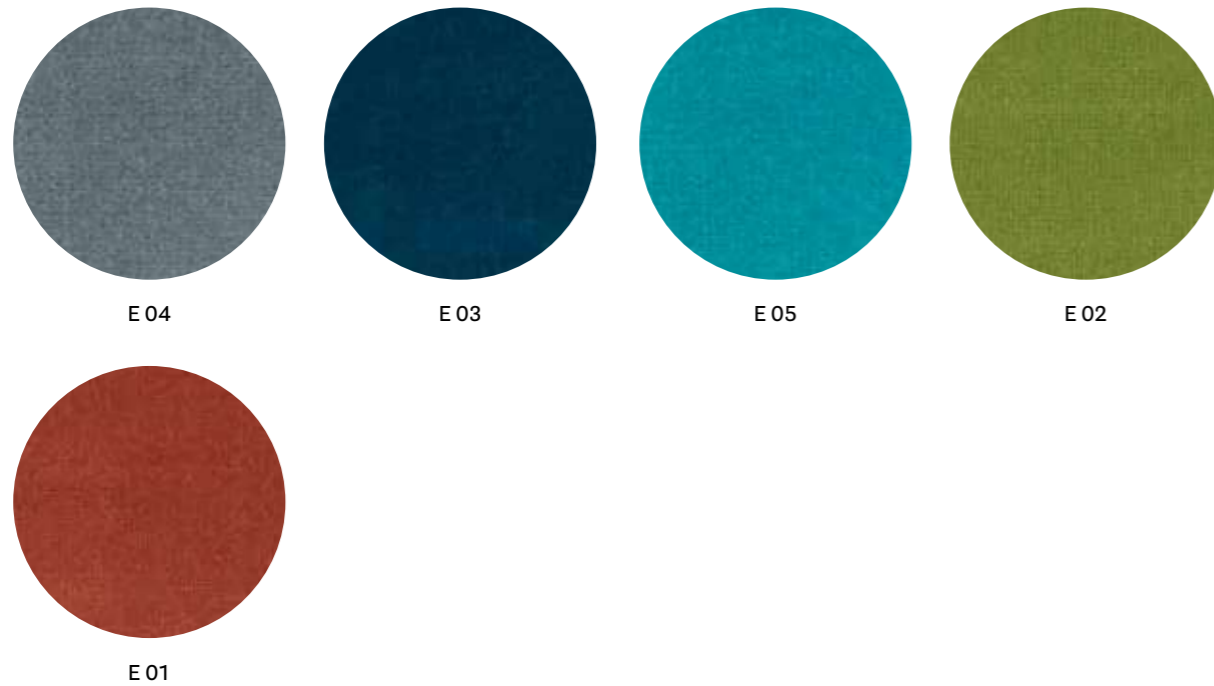
Kuadra

Kuadra XL

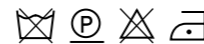
# Velvet

## Velluto

CATEGORY E / CATEGORIA E



technical specifications / specifiche tecniche



- COLLECTION / COLLEZIONE  
**DEDAR**  
ADAMO & EVA
- COMPOSITION / COMPOSIZIONE  
100% Cotton

- ABRASION / ABRASIONE  
50.000 cycles, Martindale (ISO 12947-2)
- RUBBING FASTNESS / SOLIDITÀ ALLO SFREGAMENTO  
Dry 4-5 and Wet 3-5, scale 1-5  
(ISO 105-X12)

- LIGHT FASTNESS / SOLIDITÀ ALLA LUCE  
4-6, scale 1-8 (ISO 105-B02)

CATEGORY G / CATEGORIA G



technical specifications / specifiche tecniche



- COLLECTION / COLLEZIONE  
**kvadrat** - STILL  
DESIGNER Georgina Wright
- COMPOSITION / COMPOSIZIONE  
100% TREVIRA CS®
- ABRASION / ABRASIONE  
50.000 cycles, Martindale  
(EN ISO 12947)
- RUBBING FASTNESS / SOLIDITÀ ALLO SFREGAMENTO  
Dry and Wet 4-5, scale 1-5  
(EN ISO 105-X12)

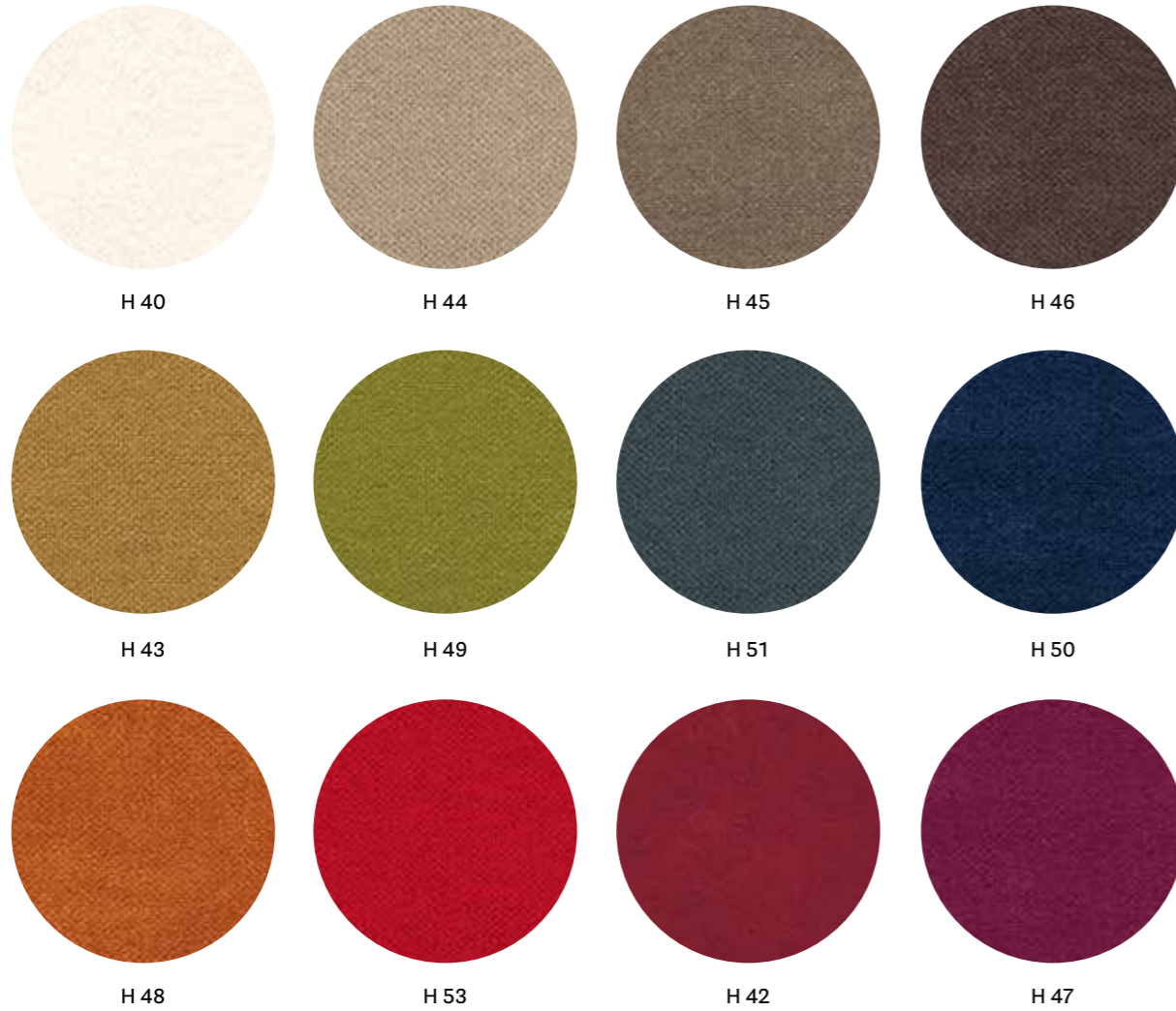
- PILLING  
4-5, scale 1-5 (EN ISO 12945)
- LIGHT FASTNESS / SOLIDITÀ ALLA LUCE  
5-7, scale 1-8 (ISO 105-B02:2014)
- SOUND ABSORPTION / ASSORBIMENTO ACUSTICO  
folded:  $\alpha_w = 0.85$  Class B (ISO 11654)
- FLAME RESISTANCE / RESISTENZA AL FUOCO  
BS 5852 Crib 5  
BS 5852 Part 1  
BS 5867 Part 2 type B  
DIN 4102 B1

- EN 1021-1/2  
IMO FTP Code 2010:Part 8  
NF D60-013  
NF P92 57 M1  
ÖNORM B1/Q1  
SN 198 898 5.2  
UNI 9175 Classe 1 IM  
US CA TB 117-2013

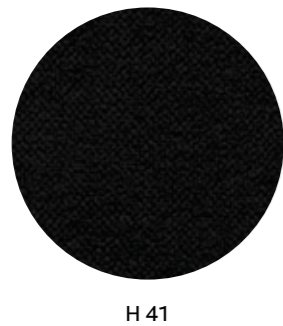
- APPROVED / OMOLOGATO



CATEGORY H / CATEGORIA H



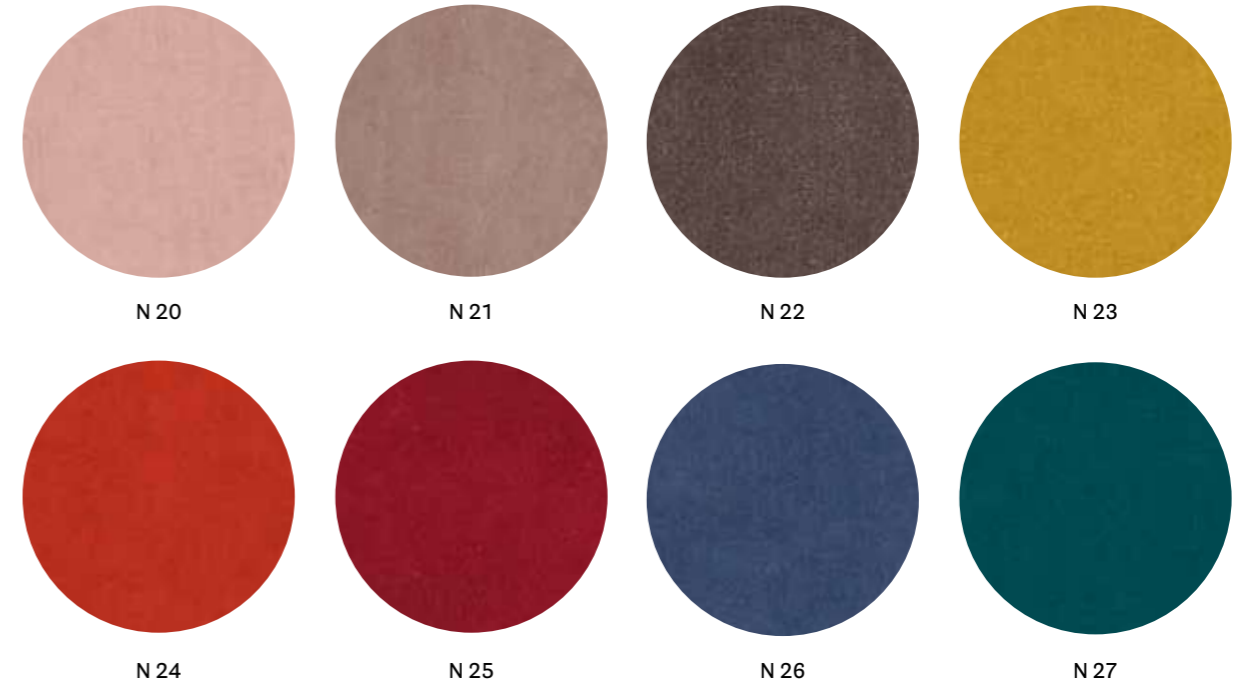
technical specifications / specifiche tecniche



H 41

- COMPOSITION / COMPOSIZIONE  
100% TREVIRA CS®
- ABRASION / ABRASIONE  
190.000 cycles, Martindale  
(EN ISO 12947-2)
- RUBBING FASTNESS / SOLIDITÀ ALLO SFREGAMENTO  
Dry and Wet 4-5, scale 1-5  
(EN ISO 105-X12)
- PILLING  
5, scale 1-5 (EN ISO 12945-2)
- LIGHT FASTNESS / SOLIDITÀ ALLA LUCE  
5, scale 1-8 (EN ISO 105-B02)
- SOUND ABSORPTION / ASSORBIMENTO ACUSTICO  
folded:  $\alpha_w = 0.70$  (EN ISO 354:2003)
- FLAME RESISTANCE / RESISTENZA AL FUOCO  
BS 5852 Part 0,1  
DIN 4102 B1  
EN 1021-1&2  
IMO MSC 307(88) Annex 1 Part 7-8  
NF P 92-503-507 M1  
NFPA 260:2019  
UNI 9177 Classe 1  
UNI 9175 Classe 1 IM  
US CA TB 117-2013

CATEGORY N / CATEGORIA N



technical specifications / specifiche tecniche



- COLLECTION / COLLEZIONE  
**kvadrat-SAHCO**  
BALBOA  
DESIGNER Najberg
- COMPOSITION / COMPOSIZIONE  
100% Polyester FR
- ABRASION / ABRASIONE  
100.000 cycles, Martindale  
(EN ISO 12947)
- PILLING  
4, scale 1-5  
(EN ISO 12945-2)
- LIGHT FASTNESS / SOLIDITÀ ALLA LUCE  
4-6, scale 1-8  
(EN ISO 105-B02)
- SOUND ABSORPTION / ASSORBIMENTO ACUSTICO  
folded:  $\alpha_w = 0.80$  Class B  
(ISO 11654)
- FLAME RESISTANCE / RESISTENZA AL FUOCO  
BS 5852 Crib 5  
BS 5867 Part 2 Type B  
EN 1021-1/2  
EN 13501, B-s1, d0  
IMO FTP Code 2010: Part 8  
ÖNORM B1/Q1  
SN 198 898 5.2  
UNI 9175 Classe 1 IM  
US CA TB 117-2013

- APPROVED / OMOLOGATO

