

burton

7056.01 - 7056.23



binder

upholstery 01

description

two-tone woven unpatterned fabric with a blended effect

composition

100% flame retardant polyester

width

± 140 cm, ± 55 inches

weight

± 763 gr/m¹, ± 25 oz/yd¹ fabrics

flame retardancy

EN 1021/ 1-2

BS 5852, crib 5

NF P 92 / 503 - 507, M1

DIN 4102, B1

UNI 9175, classe 1 IM

Cal TB 117

NFPA 260, class 1

IMO 2010 FTP part 8

abrasion

ISO 12947-2

80.000 rubs martindale

ASTM D4157

100.000 double rubs wyzenbeek

pilling

ISO 12945-2

4 (scale 1-5)

ASTM D3511

4 (scale 1-5)

colorfastness to crocking

ISO 105-X12

wet 4 - 5 / dry 4 - 5 (scale 1-5)

AATCC 8

wet 5 / dry 5 (scale 1-5)

colorfastness to light

ISO 105-B02

6 - 7 (scale 1-8)

AATCC 16.3: 40 hours

4.5 (scale 1-5)

seam slippage

ISO 13936 - 2

warp 3 mm / weft 2.7 mm

ASTM D4034

warp 101 lbs / weft 107 lbs

breaking strength

ASTM D5034

warp 365 lbs / weft 289 lbs

care



shrinkage: warp -0.7% / weft -0.6%



shrinkage: warp -1.8% / weft -2.2%



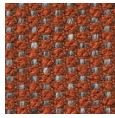
OEKO-TEX®
CONFIDENCE IN TEXTILES
STANDARD 100 
S07-0023 HOHENSTEIN HTTI
Tested for harmful substances.
www.oeko-tex.com/standard100

burton

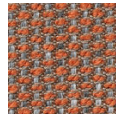
7056.01 - 7056.23



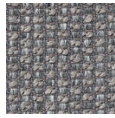
7056.01



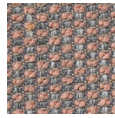
7056.02



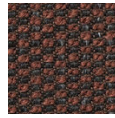
7056.03



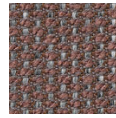
7056.04



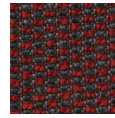
7056.05



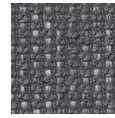
7056.06



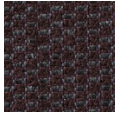
7056.07



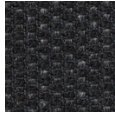
7056.08



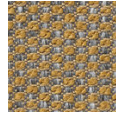
7056.09



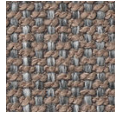
7056.10



7056.11



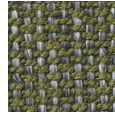
7056.12



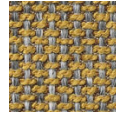
7056.13



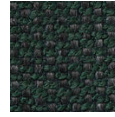
7056.14



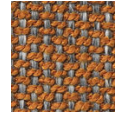
7056.15



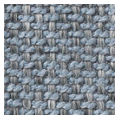
7056.16



7056.17



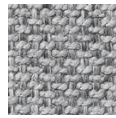
7056.18



7056.19



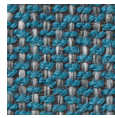
7056.20



7056.21



7056.22



7056.23