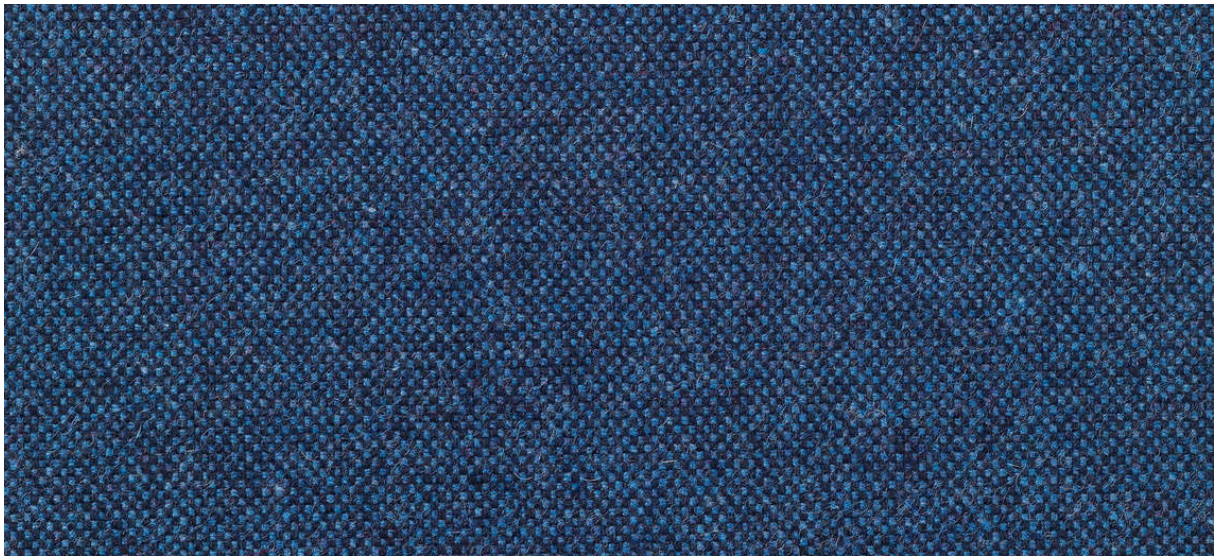


wolin

7050.01 - 7050.47



binder

upholstery 01

description

felted fine woven, wool quality, in a wide range of plain and mélangé colors

composition

75% post-consumer recycled wool / 20% polyester / 5% polyamide

width

± 150 cm, ± 59 inches

weight

± 638 gr/m¹, ± 21 oz/yd¹ fabrics

flame retardancy

EN 1021/1-2

BS 5852, crib 5

NF P 92/503-507, M2

DIN 4102, B2

IMO 2010 FTP part 8

UNI 9175, classe 1 IM

Cal TB 117

NFPA 260, class 1

abrasion

ISO 12947-2

>100.000 rubs martindale

ASTM D4157

100.000 double rubs wyzenbeek

pilling

ISO 12945-2

3-4 (scale 1-5)

ASTM D3511

4 (scale 1-5)

colorfastness to crocking

ISO 105-X12

wet 4-5 / dry 4-5 (scale 1-5)

AATCC 8

wet 4-5 / dry 5 (scale 1-5)

colorfastness to light

ISO 105-B02

6 (scale 1-8)

AATCC 16.3: 40 hours

4 (scale 1-5)

seam slippage

ISO 13936 - 2

warp 3 mm / weft 3.4 mm

ASTM D4034

warp 82 lbf / weft 81 lbf

breaking strength

ASTM D5034

warp 123 lbs / weft 109 lbs

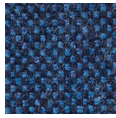
care





wolin

7050.01 - 7050.47



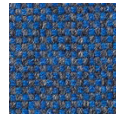
7050.01



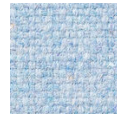
7050.02



7050.03



7050.04



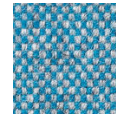
7050.05



7050.06



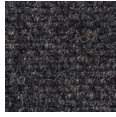
7050.07



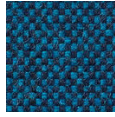
7050.08



7050.09



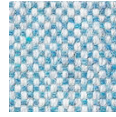
7050.10



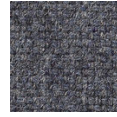
7050.11



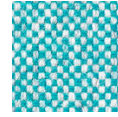
7050.12



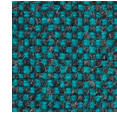
7050.13



7050.14



7050.15



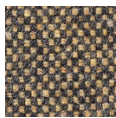
7050.16



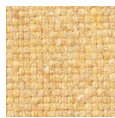
7050.17



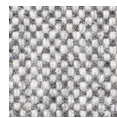
7050.18



7050.19



7050.20



7050.21



7050.22



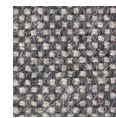
7050.23



7050.24



7050.25



7050.26



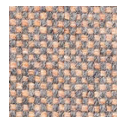
7050.27



7050.28



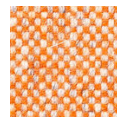
7050.29



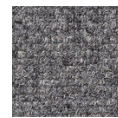
7050.30



7050.31



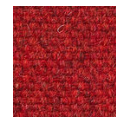
7050.32



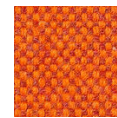
7050.33



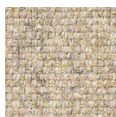
7050.34



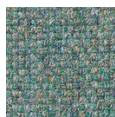
7050.35



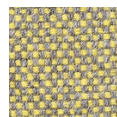
7050.36



7050.37



7050.38



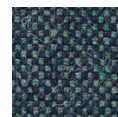
7050.39



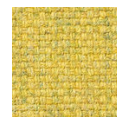
7050.40



7050.41



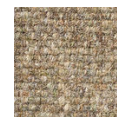
7050.42



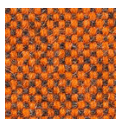
7050.43



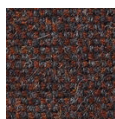
7050.44



7050.45



7050.46



7050.47