

## LEGENDA

# S·CAB

<b>AA</b>	Alluminio Anodizzato / Anodised aluminium
<b>AL</b>	Alluminio Lucidato / Polished aluminium
<b>AV</b>	Alluminio Verniciato / Coated aluminium
<b>BV</b>	Bronzo Vintage / Vintage bronze finish
<b>CR</b>	Cromato / Chromed
<b>IL</b>	Acciaio Inox Lucido / Polished stainless steel
<b>IS</b>	Acciaio Inox Satinato / Satin stainless steel
<b>KE</b>	Effetto Corten / Corten effect
<b>NB</b>	Nichel Matt / Nickel matt finish
<b>NL</b>	Nichel Nero Lucido / Black nickel glossy finish
<b>NO</b>	Nichel Nero Matt / Black nickel matt finish
<b>OS</b>	Effetto Ottone Satinato / Brass stain finish
<b>OM</b>	Oro Matt / Gold matt finish
<b>SP</b>	Verniciatura Speciale / Special coating
<b>VA</b>	Verniciato Antracite / Anthracite coated
<b>VB</b>	Verniciato Bianco / White coated
<b>VD</b>	Verniciato Verde Oliva / Olive green coated
<b>VE</b>	Verniciato Terracotta / Terracotta coated
<b>VF</b>	Verniciato Grafite / Graphite coated
<b>VL</b>	Verniciato Lino / Linen coated
<b>VM</b>	Verniciato Mattone / Brick red coated
<b>VN</b>	Verniciato Nero / Black coated
<b>VO</b>	Verniciato Avio / Air-force blue coated
<b>VR</b>	Verniciato Bronzo / Bronze coated
<b>VT</b>	Verniciato Tortora / Dove grey coated
<b>VV</b>	Verniciato Verde Tiglio / Willow green coated
<b>VY</b>	Verniciato Senape / Mustard yellow coated
<b>VZ</b>	Verniciato Azzurro / Light blue coated
<b>ZA</b>	Zincato e Verniciato Antracite / Zinc and anthracite coated
<b>ZB</b>	Zincato e Verniciato Bianco / Zinc and white coated
<b>ZE</b>	Zincato e Verniciato Terracotta / Zinc and terracotta coated
<b>ZL</b>	Zincato e Verniciato Lino / Zinc and linen coated
<b>ZN</b>	Zincato e Verniciato Nero / Zinc and black coated
<b>ZO</b>	Zincato e Verniciato Avio / Zinc and air-force blue coated
<b>ZP</b>	Zincato e Verniciato Rosa Antico / Zinc and antique pink coated
<b>ZT</b>	Zincato e Verniciato Tortora / Zinc and dove grey coated
<b>ZV</b>	Zincato e Verniciato Verde Oliva / Zinc and olive green coated
<b>ZY</b>	Zincato e Verniciato Senape / Zinc and mustard yellow coated
<b>F1</b>	Faggio Sbiancato per serie Chloé Mon Amour / Bleached beech for Chloé Mon Amour
<b>FA</b>	Faggio Laccato Acquamarina Opaco / Matt Aquamarine lacquered beech
<b>FB</b>	Faggio Tinto Nero / Black stained beech
<b>FG</b>	Faggio Laccato Grigio Opaco / Matt Grey lacquered beech
<b>FK</b>	Faggio Smoke / Smoke beech

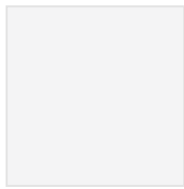
<b>FN</b>	Faggio Naturale / Natural beech
<b>FS</b>	Faggio Sbiancato / Bleached beech
<b>FW</b>	Faggio Wengé / Wenge beech
<b>HB</b>	Frassino Tinto Nero a poro aperto / Black stained ash with visible grains
<b>HN</b>	Frassino Tinto Noce Biondo / Blond stained ash
<b>HS</b>	Frassino Sbiancato / Bleached ash
<b>HW</b>	Frassino Tinto Bianco / White stained ash
<b>MS</b>	Mogano Sapelli / Sapelli mahogany
<b>NC</b>	Noce Canaletto / Canaletto walnut
<b>NR</b>	Rovere Nero / Black stained oak
<b>RN</b>	Rovere Naturale / Natural oak
<b>HPL</b>	Stratificato Compact / Compact laminate
<b>TP</b>	Tecnopolimero / Technopolymer
<b>OF</b>	Versione Office / Office Version
<b>FX</b>	Piedino Fisso / Fixed foot
<b>RG</b>	Piedino Regolabile / Adjustable foot
<b>AY</b>	Finiture tessuti per imbottiti / Fabric details for upholstered items
<b>CNY</b>	Finiture tessuti per imbottiti / Fabric details for upholstered items
<b>EPX</b>	Finiture tessuti per imbottiti / Fabric details for upholstered items
<b>EPY</b>	Finiture tessuti per imbottiti / Fabric details for upholstered items
<b>KY</b>	Finiture tessuti per imbottiti / Fabric details for upholstered items
<b>MX</b>	Finiture tessuti per imbottiti / Fabric details for upholstered items
<b>MY</b>	Finiture tessuti per imbottiti / Fabric details for upholstered items
<b>TC</b>	Tessuto cliente / Com - customer own material
<b>TX</b>	Finiture tessuti per imbottiti / Fabric details for upholstered items
<b>TY</b>	Finiture tessuti per imbottiti / Fabric details for upholstered items
<b>T4X</b>	Finiture tessuti per imbottiti / Fabric details for upholstered items
<b>T4Y</b>	Finiture tessuti per imbottiti / Fabric details for upholstered items
<b>V3X</b>	Finiture tessuti per imbottiti / Fabric details for upholstered items
<b>V3Y</b>	Finiture tessuti per imbottiti / Fabric details for upholstered items
<b>V4X</b>	Finiture tessuti per imbottiti / Fabric details for upholstered items
<b>V4Y</b>	Finiture tessuti per imbottiti / Fabric details for upholstered items
<b>V5X</b>	Finiture tessuti per imbottiti / Fabric details for upholstered items
<b>WFY</b>	Finiture tessuti per imbottiti / Fabric details for upholstered items
<b>WPX</b>	Finiture tessuti per imbottiti / Fabric details for upholstered items
<b>N...</b>	Corda nautica per Lisa Filò / Nautical rope for Lisa Filò
<b>P...</b>	Corda in estruso di PVC per Lisa Club / Woven extruded PVC for Lisa Club
<b>IG</b>	I prodotti con dicitura IG sono prodotti ignifughi testati CATAS per la reazione al fuoco secondo la norma UNI 9177 e forniti di regolare certificato di omologazione al fuoco rilasciato dal Ministero dell'Interno / Products labelled IG are CATAS tested fire-retardant products according to UNI 9177 standard, supplied with the standard fire type-approval certification issued by the Ministry of Interior.

TECHNOPOLYMER TECNOPOLIMERO

	<b>10</b> white <i>bianco</i>		<b>11</b> linen <i>lino</i>		<b>15</b> dove grey <i>tortora</i>		<b>81</b> anthracite grey <i>antracite</i>
	<b>86</b> graphite <i>grafite</i>		<b>82</b> light grey <i>grigio chiaro</i>		<b>30</b> orange <i>arancio</i>		<b>40</b> red <i>rosso</i>
	<b>42</b> geranium red <i>rosso geranio</i>		<b>20</b> yellow <i>giallo</i>		<b>22</b> mustard yellow <i>senape</i>		<b>51</b> light green <i>verde pistacchio</i>
	<b>56</b> olive green <i>verde oliva</i>		<b>62</b> light blue <i>azzurro</i>		<b>63</b> air-force blue <i>avio</i>		<b>60</b> blue <i>blu</i>
	<b>73</b> terracotta <i>terracotta</i>		<b>72</b> cocoa <i>cacao</i>		<b>70</b> bronze <i>bronzo</i>		<b>80</b> black <i>nero</i>
	<b>222</b> white - dove grey <i>bianco - tortora</i>		<b>211</b> white - orange <i>bianco - arancio</i>		<b>212</b> white - red <i>bianco - rosso</i>		<b>221</b> white - light green <i>bianco - verde pistacchio</i>
	<b>213</b> white - cornflower blue <i>bianco - fiordaliso</i>		<b>214</b> white - anthracite grey <i>bianco - antracite</i>				

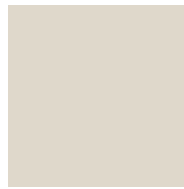
POLYCARBONATE POLICARBONATO

	<b>100</b> transparent <i>trasparente</i>		<b>315</b> glossy dove grey <i>tortora pieno</i>		<b>310</b> glossy white <i>bianco pieno</i>		<b>183</b> translucent smoked <i>trasparente fumé</i>
--	---	---	--	---	---	---	--



**11**

linen  
*lino*



**15**

dove grey  
*tortora*



**17**

caramel  
*caramello*



**81**

anthracite grey  
*antracite*



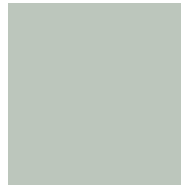
**22**

mustard yellow  
*senape*



**56**

olive green  
*verde oliva*



**58**

sage green  
*verde salvia*



**63**

air-force blue  
*avio*

WOOD LEGNO



**FN - 500**

natural beech  
*faggio naturale*



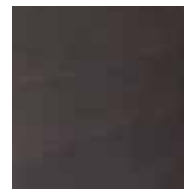
**FS - 501**

bleached beech  
*faggio sbiancato*



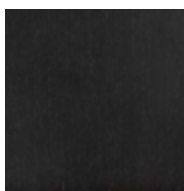
**FW - 502**

wenge stained  
beech  
*faggio tinto wengé*



**FK - 503**

smoke beech  
*faggio smoke*



**FB**

black stained  
beech  
*faggio tinto nero*



**FG - 504**

grey matt  
lacquered beech  
*faggio laccato grigio opaco*



**FA**

aquamarine  
matt lacquered  
beech  
*faggio laccato acquamarina opaco*



**HS**

bleached ash  
*frassino sbiancato*



**HW**

white stained  
ash  
*frassino tinto bianco*



**HN**

blonde walnut  
stained ash with  
visible grains  
*frassino tinto noce biondo a poro aperto*



**HB**

black stained  
ash with visible  
grains  
*frassino tinto nero a poro aperto*



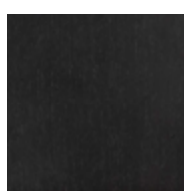
**-**

iroko  
*iroko*



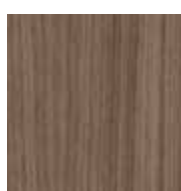
**RN**

natural oak  
*rovere naturale*



**NR**

black  
stained oak  
*rovere tinto nero*



**NC**

Canaletto walnut  
*noce canaletto*



**MS**

Sapelli  
mahogany  
*mogano sapelli*

## STEEL ACCIAIO



**OS**  
satin brass  
effect  
effetto ottone  
satinato



**OM**  
matt gold  
finish  
finitura oro opaco



**BV**  
vintage bronze  
finish  
finitura bronzo  
vintage



**NL**  
black glossy  
nickel finish  
finitura nichel  
nero lucido



**NO**  
black matt  
nickel finish  
finitura nichel  
nero opaco



**NB**  
matt nickel  
finish  
finitura nichel  
opaco



**KE**  
corten effect  
effetto corten



**CR**  
chromed  
cromato

## STAINLESS STEEL ACCIAIO INOX



**IS**  
satin  
satinato



**IL**  
polished  
lucido

## COATED STEEL ACCIAIO VERNICIATO



**VB**  
matt white,  
smooth finish  
bianco opaco,  
finitura liscia

## COATED STEEL, EMBOSSED FINISH ACCIAIO VERNICIATO, FINITURA GOFFRATA



**VL**  
matt linen  
lino opaco



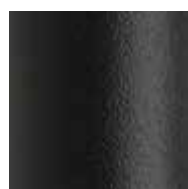
**VT**  
matt dove grey  
tortora opaco



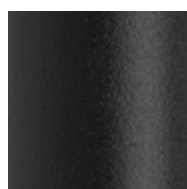
**VR**  
bronze  
bronzo



**VF**  
matt graphite  
grafite opaco



**VA**  
matt anthracite  
grey  
antracite opaco



**VN**  
matt black  
nero opaco



**VY**  
matt mustard  
yellow  
senape opaco



**VE**  
matt terracotta  
terracotta opaco



**VD**  
matt olive green  
verde oliva opaco



**VO**  
matt  
air-force blue  
avio opaco

**ALUMINIUM ALLUMINIO**



**AA**  
anodised  
anodizzato



**AL**  
polished  
lucidato



**AV 10**  
matt white  
coated,  
embossed finish  
verniciato bianco  
opaco, finitura  
goffrata



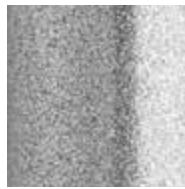
**AV 15**  
matt dove grey  
coated,  
embossed finish  
verniciato tortora  
opaco, finitura  
goffrata



**AV 70**  
matt bronze  
coated,  
embossed finish  
verniciato  
bronzo opaco,  
finitura goffrata



**AV 81**  
matt anthracite  
grey coated,  
embossed finish  
verniciato  
antracite opaco,  
finitura goffrata



**AV 84**  
silver coated,  
smooth finish  
verniciato  
argento,  
finitura lucida

**ZINC AND MATT COATED STEEL, EMBOSSED FINISH ACCIAIO ZINCATO E VERNICIATO OPACO, FINITURA GOFFRATA**

**INDOOR/OUTDOOR**



**ZB**  
white  
bianco



**ZL**  
linen  
lino



**ZT**  
dove grey  
tortora



**ZA**  
anthracite grey  
antracite



**ZY**  
mustard yellow  
senape



**ZE**  
terracotta  
terracotta



**ZO**  
air-force blue  
avio



**ZP**  
antique pink  
rosa antico



**ZV**  
olive green  
verde oliva



**ZN**  
black  
nero

**SUMMER AND LEO FINISHES FINITURE SUMMER E LEO  
ZINC AND MATT COATED STEEL, EMBOSSED FINISH ACCIAIO ZINCATO E VERNICIATO OPACO, FINITURA GOFFRATA**

**INDOOR/OUTDOOR**



**VB**  
white  
bianco



**VT**  
dove grey  
tortora



**VA**  
anthracite grey  
antracite



**VM**  
brick red  
mattone



**VV**  
willow green  
verdeiglio

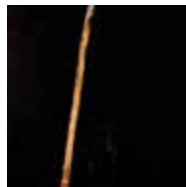


**VZ**  
light blue  
azzurro

## MARMO MARBLE



**451**  
Calacatta  
Calacatta

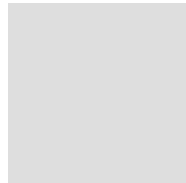


**452**  
Sahara Noir  
Sahara Noir

## COMPACT LAMINATE STRATIFICATO COMPACT



**10**  
white  
bianco



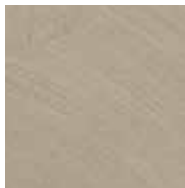
**82**  
light grey  
grigio chiaro



**81**  
anthracite grey  
antracite



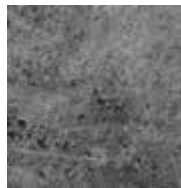
**15**  
dove grey  
tortora



**92**  
dove-grey  
spatula effect  
effetto  
spatolato  
tortora



**93**  
piacentina  
stone effect  
effetto pietra  
piacentina



**87**  
concrete effect  
effetto cemento



**94**  
slate effect  
effetto ardesia



**90**  
stone effect  
effetto pietra



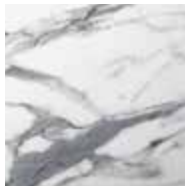
**91**  
grit effect  
effetto graniglia



**570**  
dove grey oak  
rovere tortora



**571**  
beaver oak  
rovere castoro



**572**  
Carrara marble  
effect  
effetto marmo  
Carrara



**574**  
black marble  
effect  
effetto marmo  
nero Impero



**575**  
black Sahara  
marble effect  
effetto marmo  
nero Sahara



**573**  
corten effect  
effetto corten



**95 FENIX**  
black, opaque  
surface,  
anti-fingerprint  
and soft touch  
nero, superficie  
opaca,  
anti-impronta  
e soft touch

**ZINC AND POWDER COATED STEEL** ACCIAIO ZINCATO E VERNICIATO A POLVERE

---



**10 - ZB**

white  
bianco



**ZT**

dove grey  
tortora



**81 - ZA**

anthracite grey  
antracite



**ZE**

terracotta  
terracotta



**ZO**

air-force blue  
avio



**ZV**

olive green  
verde oliva



**ZN**

black  
nero

**BLACK CORK FOR DRESS\_CODE** SUGHERO NERO PER DRESS\_CODE

---



**SN**

black  
nero

**TEMPERED GLASS** VETRO TEMPERATO

---



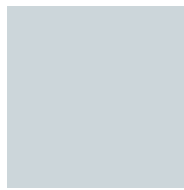
**412**

white lacquered  
laccato bianco



**401**

smoked grey  
grigio fumé



**413**

screen printed  
serigrafato



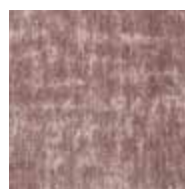
V5 D7



V5 D8



V5 A7



V5 A6



V5 A8



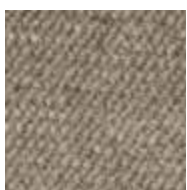
V5 A9



V5 B0



V4 45



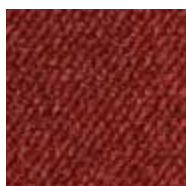
V4 40



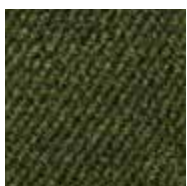
V4 44



V4 46



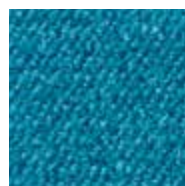
V4 39



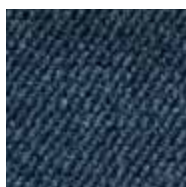
V4 38



V4 47



V4 50



V4 48



V4 49

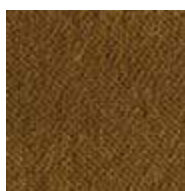
VELVET VELLUTO



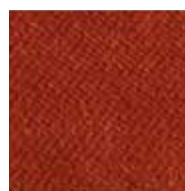
V3 60



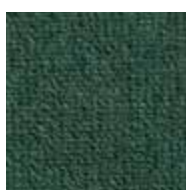
V3 59



V3 62



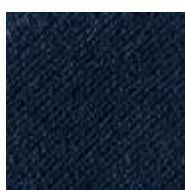
V3 58



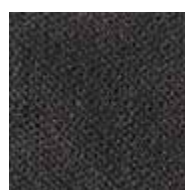
V3 57



V3 64



V3 63



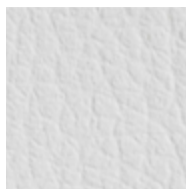
V3 66





**SIMIL-LEATHER** SIMILPELLE

---



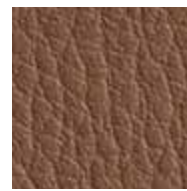
**EP 74**



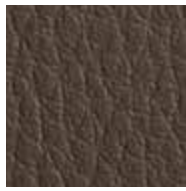
**EP E0**



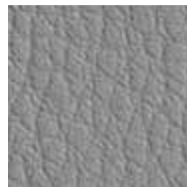
**EP 70**



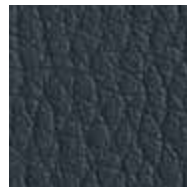
**EP 68**



**EP 73**



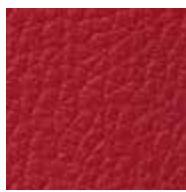
**EP 69**



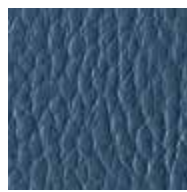
**EP 71**



**EP 75**



**EP 72**

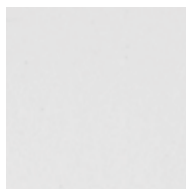


**EP E1**



**NATURAL-LEATHER** CUOIO NATURALE

---



**CN 83**



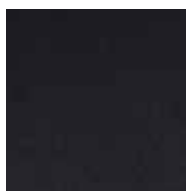
**CN A2**



**CN A1**



**CN 82**



**CN 84**



**WOOL** LANA

---



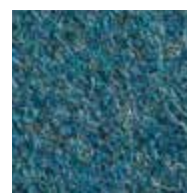
**WF 98**



**WF 95**



**WF 97**



**WF 96**





T9 E2



T9 E3



T9 79



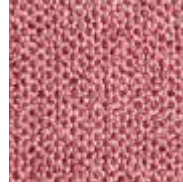
T9 E4



T9 E5



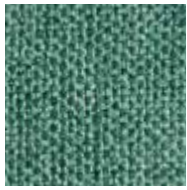
T9 78



T9 85



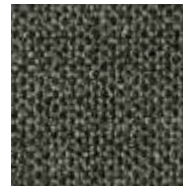
T9 E6



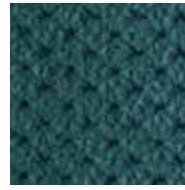
T9 E7



T9 80

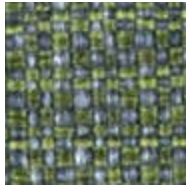


T9 E8



M2 09

FABRIC TESSUTO



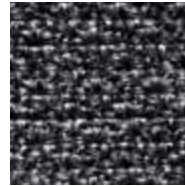
T5 26



T5 27



T6 28



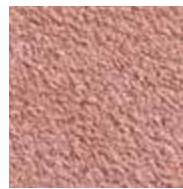
T3 25



M1 19



M1 18



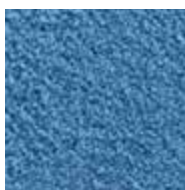
M1 17



M1 05



M1 16



M1 20



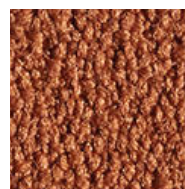
T4 51



T4 A3



T4 53



T4 A4



T4 A5



T4 D9



T4 56



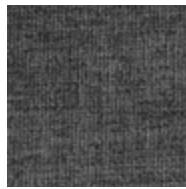
T4 55



**FABRIC TESSUTO** STAIN RESISTANT *ANTIMACCHIA*



**T8 06**



**T8 07**



**T8 08**

**WATERPROOF ACRYLIC** ACRILICO WATERPROOF



**WP 87**



**WP 88**



**WP 86**

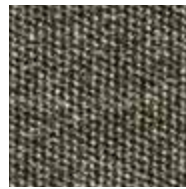


**WP 89**

**ACRYLIC** ACRILICO WATER REPELLENT STAIN RESISTANT *IDROREPELENTE ANTIMACCHIA*



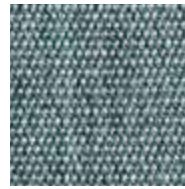
**A6 D1**



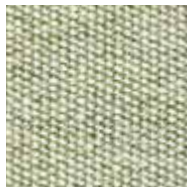
**A6 D2**



**A6 D3**



**A6 86**



**A6 89**

**FABRIC TESSUTO**



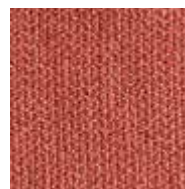
**K1 90**



**K1 99**



**K1 00**



**K2 04**



**LINEN LINO** CERTIFIED AND CAM COMPLIANT *CERTIFICATO E CONFORME AI CAM*



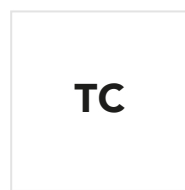
**L1 D4**



**L1 D5**



**L1 D6**



**TC**

**CUSTOMER OWN FABRIC** TESSUTO CLIENTE

**FABRICS FOR FIXED AND MOBILE CUSHIONS FOR DROP, GIULIA, GLENDA, IGLOO, ISY, MISS B**

TESSUTI PER CUSCINI FISSI E DA APPOGGIO PER DROP, GIULIA, GLENDA, IGLOO, ISY, MISS B

FABRIC TESSUTO

PANAMA COTTON COTONE PANAMA



25



32

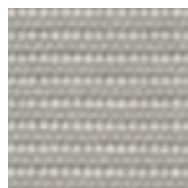


21

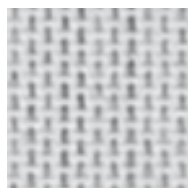
**FABRICS FOR OUTDOOR CUSHIONS FOR LISA SOFA, SWING, LOUNGE, DRESS\_CODE**

TESSUTO CUSCINI OUTDOOR PER LISA SOFA, SWING, LOUNGE, DRESS\_CODE

ACRYLIC ACRILICO  WATER-REPELLENT STAIN RESISTANT IDROREPELENTE ANTIMACCHIA



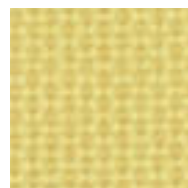
S1 B5



S1 B6



S1 B8



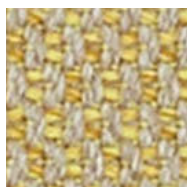
S1 B7



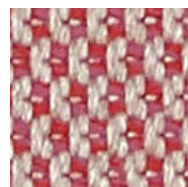
S2 B9



S3 C0



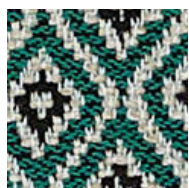
S4 C1



S4 C2



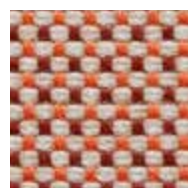
S4 C3



S5 C4



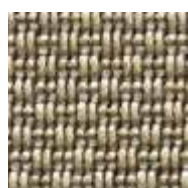
S7 C6



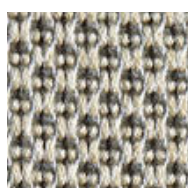
S6 C5

**FABRICS CLOTHS DRESS\_CODE TESSUTI TELI DRESS\_CODE**

ACRYLIC ACRILICO  WATER-REPELLENT STAIN RESISTANT IDROREPELENTE ANTIMACCHIA



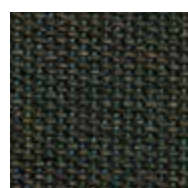
A3 C7



A3 C8



A4 C9



A5 D0

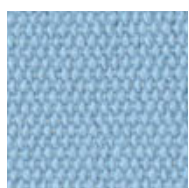
**FABRICS FOR OUTDOOR CUSHIONS FOR SI-SI, SI-SI BARCODE, SI-SI DOTS**

TESSUTO CUSCINI OUTDOOR PER SI-SI, SI-SI BARCODE, SI-SI DOTS

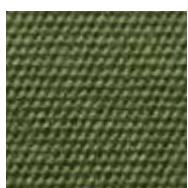
ACRYLIC DRALON® ACRILICO DRALON® WATER-REPELLENT IDROREPELENTE



B1



B2



B3



B4

## FABRICS FOR OUTDOOR CUSHIONS FOR SUMMER CHAIR AND ARMCHAIR

TESSUTO CUSCINI OUTDOOR PER SEDIA E POLTRONA SUMMER

### ACRYLIC ACRILICO WATER-REPELLENT STAIN RESISTANT IDROREPELENTE ANTIMACCHIA



**10**

### SYNTHETIC MATERIALS MATERIALI SINTETICI

#### SYNTHETIC FABRIC, BREATHABLE, WATER-REPELLENT TESSUTO SINTETICO TRASPIRANTE IDROREPELENTE



**T10**

white  
bianco



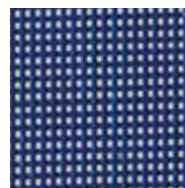
**T15**

dove grey  
tortora



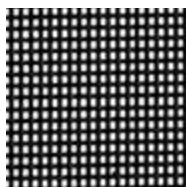
**T16**

honey  
miele



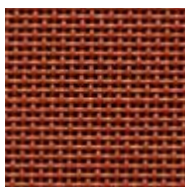
**T60**

blue  
blue



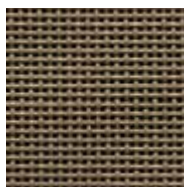
**T81**

anthracite grey  
antracite



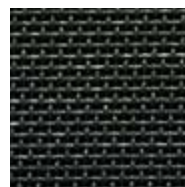
**T73**

terracotta  
terracotta



**T75**

mud  
fango



**T96**

slate  
ardesia

### NAUTICAL ROPE CORDA NAUTICA



**N84**

silver  
argento



**N81**

anthracite grey  
antracite



**N80**

black  
nero



**N15**

dove grey  
tortora



**N30**

orange  
arancio



**N57**

mint  
menta

100% recyclable polyester, dope-dyed, non-toxic, resistant and easy to maintain.  
100% poliestere riciclabile, tinto in pasta, atossico, resistente e di facile manutenzione.

### WOVEN EXTRUDED PVC WITH NYLON WIRES CORDA IN ESTRUSO DI PVC CON ANIME IN NYLON



**P10**

white  
bianco



**P86**

graphite  
grafite



**P74**

biscuit  
biscotto



**P73**

terracotta  
terracotta