

# 08

S: 1-2-3

fabrics

**beltá**

Life  
Style







S - 3  
6600

S - 3  
6576

S - 3  
6577

S - 3  
6578

S - 3  
6580

S - 3  
6584

S - 3  
6585

S - 3  
6586

S - 3  
6587

S - 3  
6588

S - 3  
6590

S - 3  
6591

S - 3  
6593

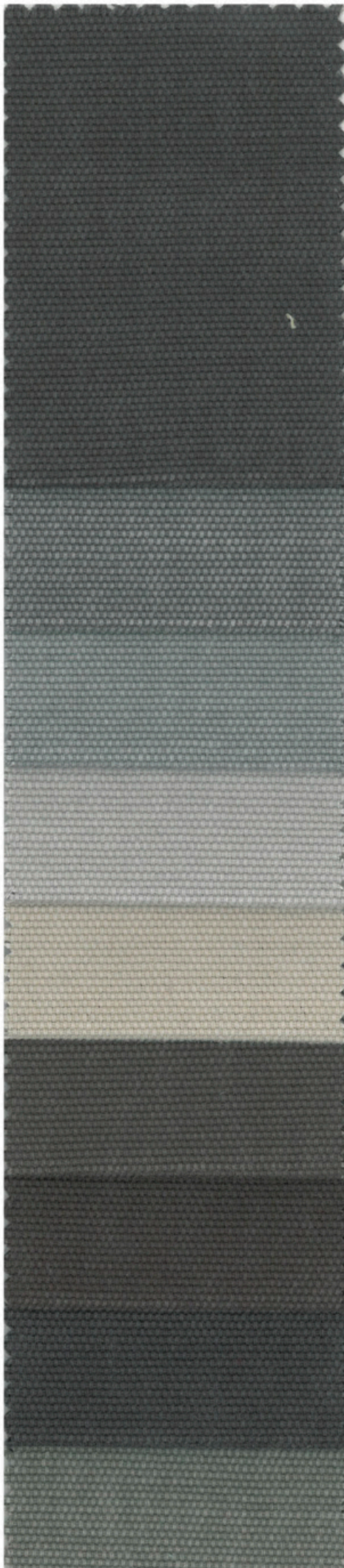
S - 3  
6594

S - 3  
6595

S - 3  
6596

S - 3  
6597

S - 3  
6601





S - 3  
6563

S - 3  
6564

S - 3  
6565

S - 3  
6567

S - 3  
6570

S - 3  
6571

S - 3  
6572

S - 3  
6574

S - 3  
6575



S - 3  
5123

S - 3  
5138

S - 3  
6524

S - 3  
6527

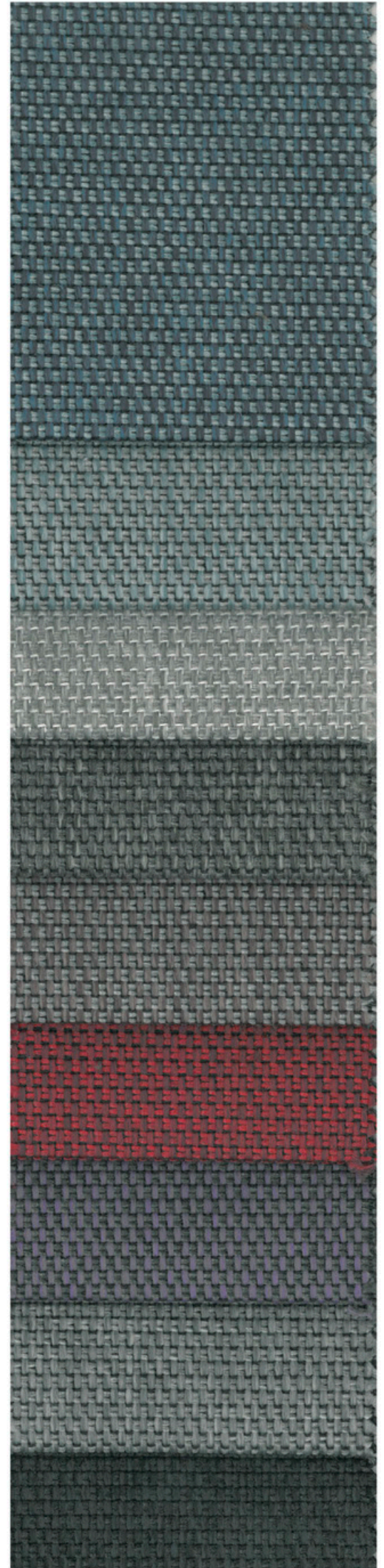
S - 3  
5127

S - 3  
5129

S - 3  
5132

S - 3  
6525

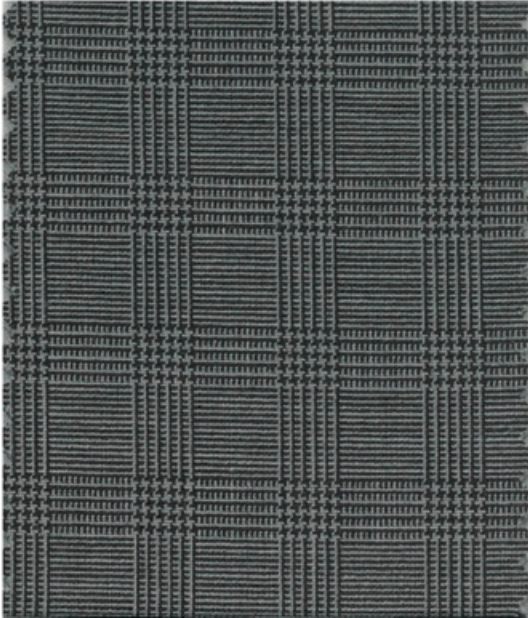
S - 3  
5137







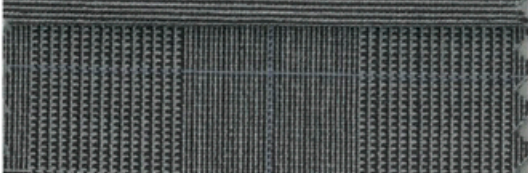
S - 2  
6577



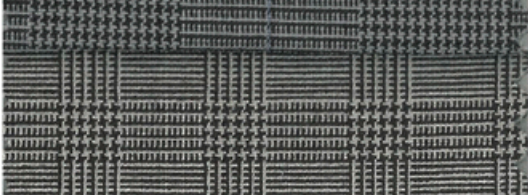
S - 2  
6578



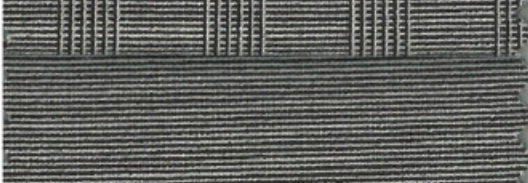
S - 2  
6579



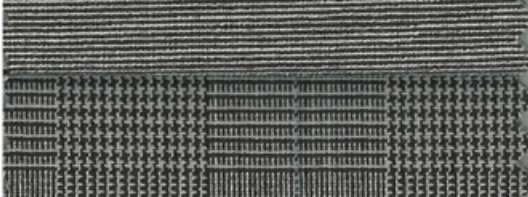
S - 2  
6580



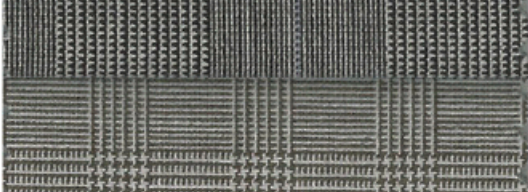
S - 2  
6581



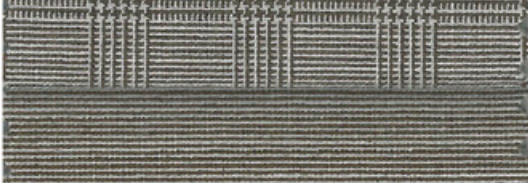
S - 2  
6582



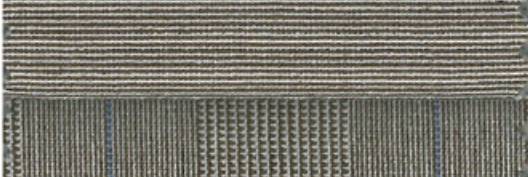
S - 2  
6589



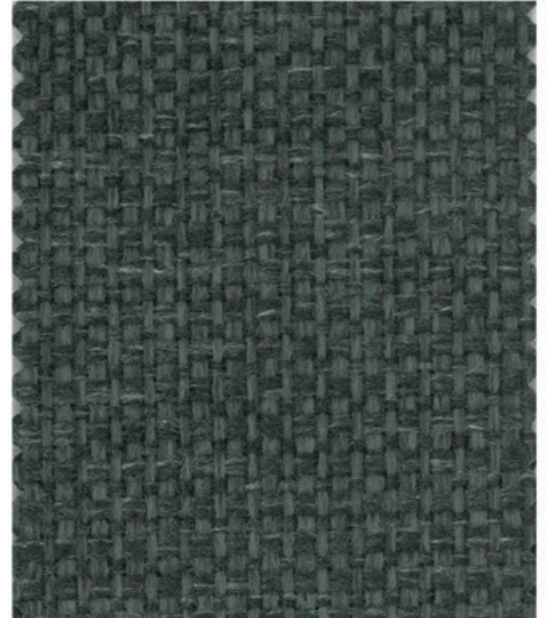
S - 2  
6590



S - 2  
6591



S - 1  
2620



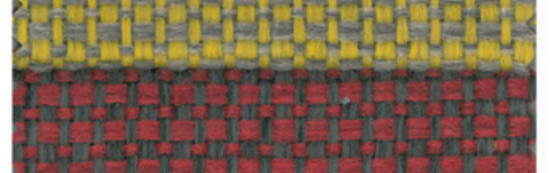
S - 1  
2623



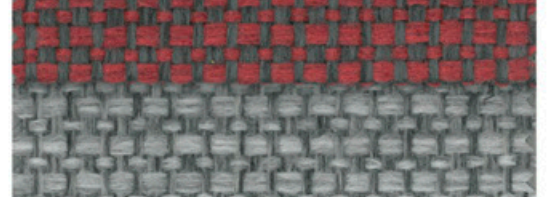
S - 1  
2625



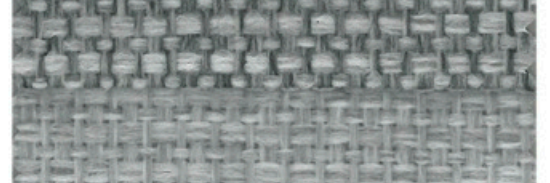
S - 1  
2627



S - 1  
2630



S - 1  
2631



S - 1  
2632



S - 1  
2634



S - 1  
2637







S - 1  
2368

S - 1  
2639

S - 1  
2640

S - 1  
2641

S - 1  
2642

S - 1  
2643

S - 1  
2645

S - 1  
2646

S - 1  
2648

S - 1  
2649

S - 1  
2650

S - 1  
2651

S - 1  
2652

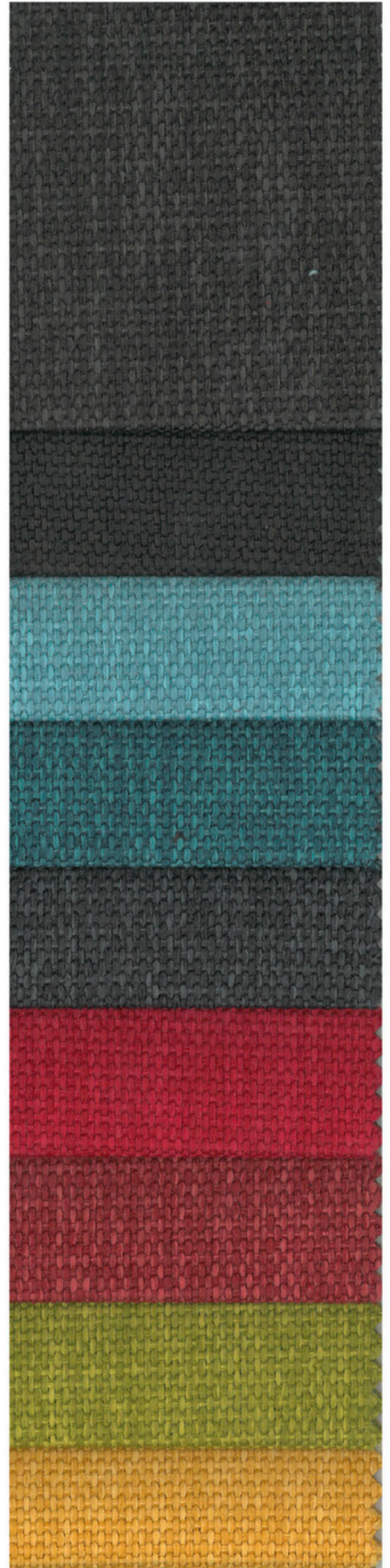
S - 1  
2653

S - 1  
2655

S - 1  
2656

S - 1  
2658










S - 1  
2659









| ARTÍCULOS<br>ARTICLES  | ANCHO<br>WIDTH<br>LARGEUR | COMPOSICIÓN<br>COMPOSITION | RESISTENCIA A LA ABRASIÓN<br>MARTINDALE TEST<br>RÉSISTANCE A L'ABRASION | INSTRUCCIONES DE LAVADO<br>WASHING CARE<br>INSTRUCTIONS DE LAVAGE                     |
|--|---------------------------|----------------------------|---|---|
| S - 3<br>6576 a 6601    | 138 cm                    | 100% CO                    | 25000 cycles  |    |
| S - 3<br>6563 a 6575   | 140 cm                    | 68% PES 32% CO             | 60000 cycles  |    |
| S - 3<br>5123 a 5138<br>6522 a 6529  | 140 cm                    | 50% PP 31% PES 19% CO      | 36000 cycles  |   |
| S - 2<br>6577 a 6591  | 143 cm                    | 63% PES 33% CV 4% EA       | 100000 cycles   |  |
| S - 1<br>2616 a 2637   | 138 cm                    | 100% PP                    | 22000 cycles  |  |
| S - 1<br>2638 a 2659  | 145 cm                    | 100% PES                   | 100000 cycles   |  |

Los colores de los tejidos, polipiel y pieles pueden variar de una partida a otra. / The colors of the fabrics, synthetic leather and leather may differ from one consignment to the next. / Les couleurs des tissus, des cuirs synthétiques et des cuirs, ils peuvent varier d'une commande à une autre.

beltá

beltá &  
FRAJUMAR  
PROJECTS

FRAJUMAR

Poeta Francisco Antonio Gimenez, 33  
30510, Yecla, Murcia, Spain

T: +34 968 719111

F: +34 968 753690



info@beltafrajumar.com

www.beltafrajumar.com

www.belta.es

www.frajumar.com



Facebook: FRAJUMAR Home Contract  
BELTÁ Home Contract



Twitter: @belta\_frajumar



You Tube: BELTÁ-FRAJUMAR's channel