

Come Inside.

RECREATIONAL EDITION



AYTM

INTRO— DUCTION

What inspires you when you enter a new recreational space?

More than ever, we expect to experience something different, authentic and well-thought-out when we are visiting a new hotel, café or a shop. We have seen it all and it takes more to impress us.

The colours, the design of the interior decór, the ambiance and even the scents are all contributing to create that unique feeling that sets us in a different mood, makes us tell our friends — and most of all speaks to our senses and makes us stay longer.

Step inside our design universe and feel inspired by the beautiful spaces that our creative collaborators have established.

CAFEZAL
MILANO
ITALY

*ARCHITECT
STUDIOPEPE*

*PHOTOGRAPHY
GIUSEPPE DINNELLA*







ANGUI & COFFEE



ESPRESSO	LATTE MACC	GRANDE	E
VILLA LIGOS	SODA O MANGIOLA	SMF	E-F
PIRLLINGS		SMF	E-F
VILLA FLAT WHITE		HIGH	E
VILLA LIGOS		AND	E
SODA O MANGIOLA		ETIORIA	E
HIGHLAND		EL I	E
ESPRESSO COFFEE - INFUSI		ITA DECAF	E
SINFONIA		HONDURAS	E
BEANBUDIA		BLU	F
APRICOT SWIND		LUCCA RICA	F
TE - CACIOWA DI CAFFE		M	F
		DRINK	F
		COFFA	F
		SEDDA	E-F
		N	

With coffee traditions steeped in history, drinking a coffee in Milano is as much a ritual as it is art. In recent years, however, Italy's design and fashion capital has seen a surge of passionate third wave coffee pioneers rewriting the rulebook.

One of the coolest additions to this scene is Cafezal — founded by two Italian–Brazilian friends who offers a well chosen selection of coffee from the best plantations around the world.

An inky interior is set against edgy black marquina marble and the incredible & recognized Milanese architects Studiopepe has ensured that the stylish interior is as trendsetting as Cafezal's coffee itself.





PAGE 6—7
ANGUI / BAR CHAIR

LEFT
ANGUI / CHAIR

HOTEL
ROYAL
AARHUS
DENMARK

*ARCHITECT
DESIGN CIRCUS*

*PHOTOGRAPHY
DESIGN CIRCUS*











PREVIOUS PAGE
FLOWERS / CUSHION
MOTIF / CUSHION
LEFT
CONCHA / HOOK
RIGHT
UNITY / 1/4 CIRCLE MIRROR
UNITY / 1/2 CIRCLE MIRROR

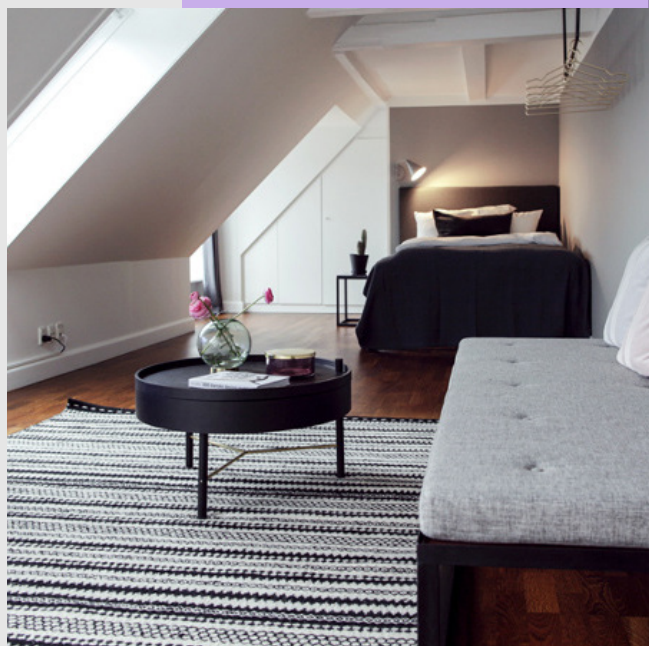


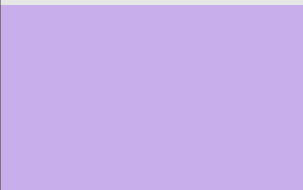
This beautiful hotel project takes place in our hometown Aarhus, where talented stylist, Birgit Tarp and her team from Design Circus have styled the historic hotel icon, Hotel Royal. The project features some of Birgit's favorite brands and we are honored to be among the favorites.

HOTEL
KONG
ARTHUR

COPEN—
HAGEN
DENMARK







LEFT
GLOBE / VASE
TOTA / JAR WITH LID
SANATI / CUSHION

RIGHT
GLOBE / VASE







LEFT
CIRCUM / MIRROR

RIGHT
GLOBE / VASE
TOTA / JAR WITH JID

VILLA
SANGIO —
VESE

PANZANO
ITALY





RIGHT UP
ANGUI / CHAIR
RIGHT DOWN
ANGUI / MIRROR
ANGUI / CHAIR
LEFT UP
VARIA / VASE
STILLA / RUG
LEFT DOWN
ANGUI / SHELF
ANGUI / MIRROR



Sangiovese welcomes guests into its heart & shares with them its fresh new views on love: Contemporary, Unconventional, Irreverent.

Sangiovese merges Decameronian pleasures of the mind with contemporary art-deco design, creating an intriguing and stimulating space where guests can immerse themselves in Boccaccio's tales, cocooned in the palazzo's very welcoming ambience.

Follow the adventures @villa_sangiovese.



UP
ANGUI / CHAIR
DOWN
ANGUI / MIRROR
ANGUI / CHAIR

ÅHUS GÄST
GIVARE—
GÅRD
ÅHUS
SWEDEN

*INTERIOR DESIGNER
LENA NYHOLM*

*PHOTOGRAPHY
JONAS LINDSTRÖM*

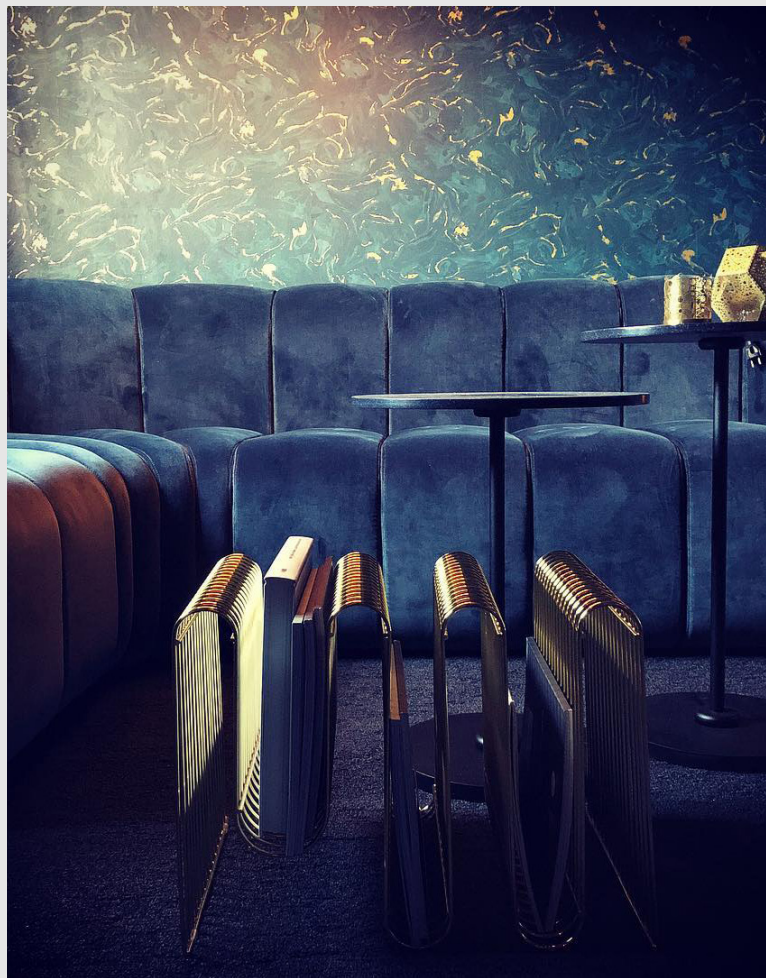




PREVIOUS PAGE
CONCHA / HOOK

LEFT
VESTIS / HANGER

RIGHT
CURVA / MAGAZINE HOLDER





LEFT
ANGUI / MIRROR
RIGHT
CONCHA / HOOK



HÔTEL LE
GENOVESE
BONIFACIO
FRANCE





HIP & DOWN
STEEL / TABLE
UNIT / TRAY
ANGUL / CHAIR
CIRCUM / MIRROR







UP
ANGUI / BENCH
ANGUI / CHAIR
VARIA / VASE

DOWN
STILLA / TABLE
STILLA / RUG

HOTEL
DENMARK

COPEN—
HAGEN
DENMARK





*LEFT & RIGHT
TOTA / LANTERN
TOTA / LANTERN FORTEALIGHT*







LEFT /
CURVA / MAGAZINE HOLDER
TOTA / LANTERN FOR TEALIGHT

RIGHT /
TOTA / LANTERN
TOTA / LANTERN FOR TEALIGHT

L'APPAR—
TEMENT
MOSCOW
RUSSIA

*ARCHITECT
L'APPARTEMENT STUDIO*

*PHOTOGRAPHY
KRISTINA NIKISHINA*



RIGHT
STILLA / TABLE
LEFT
ANGUI / CHAIR
ANGUI / BENCH





PREVIOUS PAGE
SPECULUM / TABLE
VARIA / VASE
GLOBE / VASE
LEFT
ANGUI / CHAIR
ANGUI / BENCH
RIGHT
STILLA / TABLE





COURAGE
STORE
ODESSA
UKRAINE

*ARCHITECT
ANGELINA MALYSHEVA*

*PHOTOGRAPHY
NIKOLAY BULAVSKY*



ANGUI & CLOTHES









The Angui Bar Chair has been selected by architect Angelina Malysheva for the Courage Store and they match just perfectly in the vibrant enviroment.

It is simply impossible not to be captivated by the Angui's iconic shape and lively colours.

*PREVIOUS PAGES
ANGUI / BAR CHAIR*

*LEFT
ANGUI / BAR CHAIR*

HEIM—
STADEN
TEGLHOM
COPEN—
HAGEN
DENMARK

*ARCHITECT
DESIGN CIRCUS*

*PHOTOGRAPHY
DESIGN CIRCUS*





UP
FORMA / THROW
MOTUM / CUSHION
UNITY / TRAY
CONCHA / BOWL
TURRIS / LANTERN
TORUS / VASE

DOWN
FORMA / THROW
FORMA / THROW
CORLA / CUSHION
VARIA / VASE
TOTA / BOWL
TOTA / LANTERN
CONCHA / BOWL
GRASIL / CANDLE HOLDER





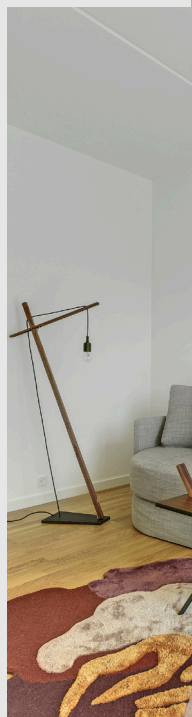


UP LEFT
LUCEO / FLOOR LAMP
LUCEA / BOWL
STILLA / RUG

UP RIGHT
LUCEO / TABLE LAMP
FLORES / CUSHION

DOWN LEFT
FLORES / CUSHION
MOTUM / CUSHION
UNITY / HALF CIRCLE TRAY
FLORES / RUG

UP RIGHT
SPATIA / VASE
TORUS / VASE





PAST &
PRESENT

MILANO
ITALY

*ARCHITECT
STUDIOPEPE*

*PHOTOGRAPHY
ANDREA FERRARI*



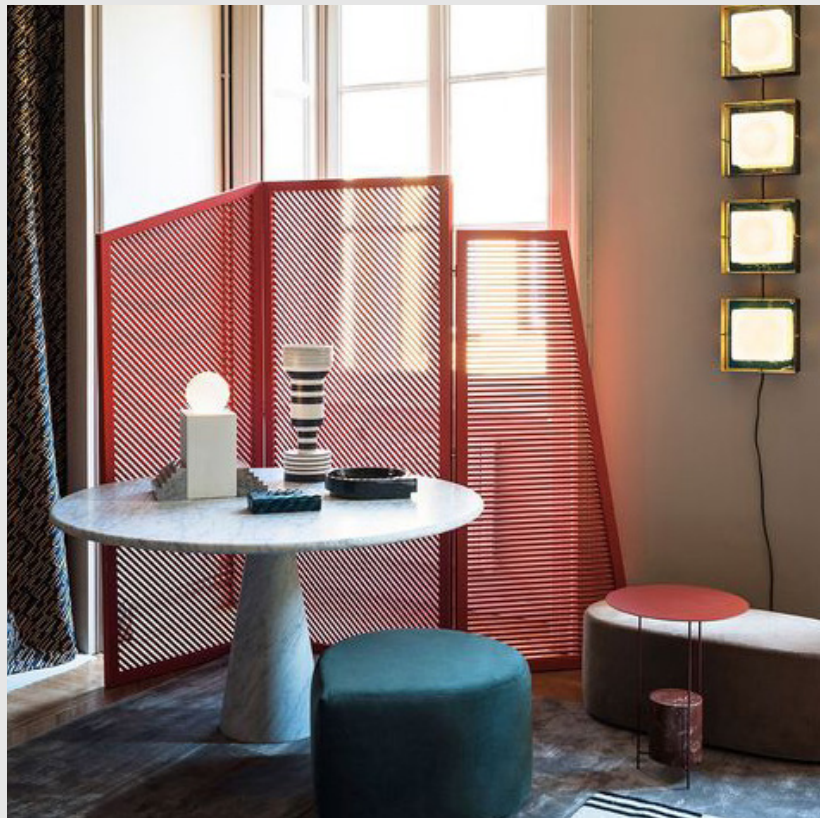
PREVIOUS PAGE
MOLES / BOOKEND
GRASIL / CANDLE HOLDER

THIS PAGE
SPECIUM / TABLE
MOLES / BOOKEND









LEFT
CIRCUM / MIRROR
STILLA / CLOCK

RIGHT
STILLA / BOWL
STILLA / POUP

YLAB &
AYTM

BARCE —
LONA
SPAIN

ARCHITECT
YLAB

PHOTOGRAPHY
YLAB





YLAB Arquitectos is a Barcelona based architecture and interior design practice co-founded and ran by Tobias Laarmann and Yolanda Yuste.

They work internationally on commercial, residential, corporate, hospitality & health-care projects providing full architectural, interior design and furniture design services.





PREVIOUS PAGES
STILLA / POUF

LEFT
ANGUI / BAR CHAIR

RIGHT
STILLA / POUF
FUMI / CONSOLE TABLE



LEFT
STILLA / POUF

RIGHT
STILLA / POUF
FUMI / CONSOLE TABLE



CA' VENTI —
QUATTRO
MILANO
ITALY

*ARCHITECT
MAKEYOURHOME*

*PHOTOGRAPHY
MAKEYOURHOME*





Ca'ventiquattro is an ongoing design project located within the Isola Design District in Milan. Ca'ventiquattro is a marketing project that offers visibility and opportunities to emerging brands, artisans and international designers during the Milan Design Week.

PREVIOUS PAGE
GRASIL / CANDLE HOLDER
TOTA / LANTERN

THIS PAGE
VIVERO / WATERING CAN
TOTA / JAR WITH LID









THIS PAGE
TOTA / LANTERN
GRASIL / CANDLE HOLDER
FUMI / TABLE
STILLA / POUF
STILLA / RUG



OTHER CASES





AVENUE HUSEET
COPENHAGEN - DENMARK
ARGUS / CUSHION
TODUS / VASE
FOSSILUS / TABLE
SODUM / TABLE
STILLA / RUG



*HÔTEL DU CENTRE NAUTIQUE
BONOEACIO – FRANCE
SPECULUM / TABLE*



RESTAURANT KANLANNEN
COPENHAGEN – DENMARK
TOPI / LANTERN FOR TEALIGHT



RESTAURANT?
2 - ITALY
ANGUI / MIRROR
ANGUI / SHELF

CORPORATE SOCIAL RESPONSIBILITY

To ensure the continued focus on our corporate social responsibilities, we have instated a full-time employee to do the task. Our CSR manager is dedicated to finding solutions, suppliers and partners that are as dedicated as we are to responsible and sustainable production methods. At the same time, we are fully aware that we can start by being more socially responsible ourselves, so we limit our printing and the use of paper as much as possible – in the past 2 years, printing has been drastically reduced. When possible, we bike or travel with public transport and we make sure to carefully sort our waste. It is our intention to rigorously continue our CSR work and find more areas where we can improve in the future. We wish to leave the planet in good condition for future generations and we want to ensure that all living beings are treated with respect and kindness.



CSR MANAGEMENT

To ensure the continued focus on our corporate social responsibilities, we have instated a full-time employee to do the task. Our CSR manager is dedicated to finding solutions, suppliers and partners that are as dedicated as we are to responsible and sustainable production methods. At the same time, we are fully aware that we can start by being more socially responsible ourselves, so we limit our printing and the use of paper as much as possible – in the past 2 years, printing has been drastically reduced. When possible, we bike or travel with public transport and we make sure to carefully sort our waste. It is our intention to rigorously continue our CSR work and find more areas where we can improve in the future. We wish to leave the planet in good condition for future generations and we want to ensure that all living beings are treated with respect and kindness.



GOODWINGS

Our work often involves quite a bit of travel. When we do so, all our hotel rooms are booked through Goodwings. Every time a hotel booking is made through their website, they set aside a percentage of the cost for charity. At the end of each year the total amount is donated to a charity of our choice. In 2017 we donated to the World Wildlife Fund (WWF).



GOODWEAVE

All of our rugs are Goodweave certified. This non-profit organization aims to improve working conditions for the people in the rug industry. The Goodweave label ensures that no child or forced labour was used in the production process. AYTМ also supports educational programs for children and decent working conditions for adults. Furthermore Goodweave makes unannounced inspections of facilities to ensure they comply with their standards. Each Goodweave label has a unique ID code that can be traced back to the certified producer – so each rug is made under fair conditions.



UN GLOBAL COMPACT

Committing to the UN Global Compact means we are obligated to actively work towards complying with the Compact's 10 principles. Those include; human rights, labour rights, environmental rights and anti-corruption. Our own CSR manager does due diligence on all suppliers and partners to ensure they comply with the guidelines. In 2017 we also partnered with Green Network, who have developed a system for monitoring our supply chain in the areas involving the UN Global compact. This has resulted in extended screening of existing suppliers and a revision of our supplier code of conduct requirements.

INFO & EMAILS

AYTM HEADQUARTER

*Polensgade 15
8000 Aarhus C
Denmark*

*Phone: + 45 86 78 26 20
Website: www.aytm.dk*

AYTM SHOWROOMS

DENMARK
*Polensgade 15
8000 Aarhus C*

CHINA
*Room 408-410, Building No. 1
No. 691 West Jianguo Road
200031 Xuhui District, Shanghai*

To book an appointment email:
contact@aytm.dk

ORDER INQUIRIES

All orders: order@aytm.dk
Chinese orders: ordercn@aytm.dk

GENERAL & PRESS INQUIRES

contact@aytm.dk

SALES

**SALES DIRECTOR &
EXPORT SALES MANAGER**
MARKETS NOT COVERED BY AGENTS

LARS FRIIS NIELSEN
Phone: +45 31 22 28 96
E-mail: lfn@aytm.dk

BELGIUM

BART DEGRYSE
FLOW INTERIOR
Phone: +32 (0)486 357429
E-mail: bde@aytm.dk

CHECH REPUBLIC & SLOVAKIA

JAN REZEK
MAJNER & RESEK TRADING AGENCY
Phone: +45 25 33 98 89
E-mail: mrt@aytm.dk

CHINA

WILLIAM WANG
Phone: +86 139 1886 6214
E-mail: wiw@aytm.dk

**DENMARK, FINLAND, ICELAND
& THE BALTICS**

RASMUS WESTER
Phone: +45 31 21 61 99
E-mail: rws@aytm.dk

FRANCE

GAËL SERRE
JOSEPH LIVING AGENCY
Phone: +33 616 245 041
E-mail: gse@aytm.dk

GERMANY

POSTCODES: 0, 1, 2, 3, 48 + 49
TINA WERRELMANN
T.W. HANDELSAGENTUR FÜR
DESIGNINTERIEUR
Phone: +49 174 345 4767
E-mail: twe@aytm.dk

POSTCODES: 6, 7, 8, 9

BETTINA NEUMAYR
BETTINA NEUMAYR HANDELSAGENTUR
Phone: + 49 (0)176 80070840
E-mail: bne@aytm.dk

GREECE

JASE YASIN KOTAN
Phone: +90 (0) 534 781 94 83
E-mail: sug@aytm.dk

ITALY

TIZIANA FASSINA
TJ INTERNATIONAL DESIGN
Phone: +39 335 318053
E-mail: tfa@aytm.dk

SALES

NETHERLANDS

JOKE VAN DER STRAATEN
D'ALLEE
Phone: + 31 6 5083 7317
E-mail: dal@aytm.dk

NORWAY

ELIZABETH SETHI
MAUDS AGENCY
Phone: + 47 92 22 68 22
E-mail: ese@aytm.dk

PORTUGAL

ISABELLA NUNES
Phone: (+351) 912 847 789
E-mail: isn@aytm.dk

ROMANIA

LIVIU VASILIU
Phone: +40 721 213 088
E-mail: liv@aytm.dk

SPAIN & ANDORRA

ADRIANA BECERRA
AMBITO DESIGN AGENCY
Phone: +34 695 419 713
E-mail: adb@aytm.dk

SWEDEN

HELENA JOHANSSON
& SOFIA CARLSSON
ARTELLAAGENTUR
Phone: Helena: +46 709 69 90 83
Sofia: +46 706 47 75 60
E-mail: aaa@aytm.dk

TURKEY

JASE YASIN KOTAN
Phone: +90 (0) 534 781 94 83
E-mail: sug@aytm.dk

UNITED KINGDOM

PAUL FRANCIS
INSPIRE AGENCIES LIMITED
Phone: +44 7795 536 574
E-mail: paf@aytm.dk

