

The background features a large, abstract geometric pattern in white and dark red. The pattern includes a large circle, a smaller circle, and several overlapping shapes that resemble stylized letters or symbols, such as a 'C' and a 'Q'.

FABRICS &
LEATHERS

Blazer

Made from premium New Zealand lambswool, providing the highest quality raw material that is ideal for spinning, weaving and dyeing.

CLASS D



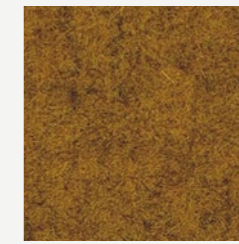
CAMIRA - BLAZER



DUNHURST
CUZ58



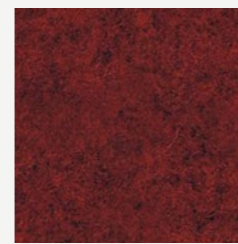
EYNESBURY
CUZ2W



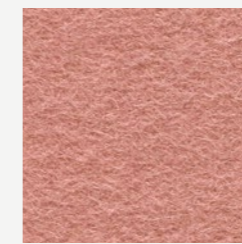
WESLEY
CUZ82



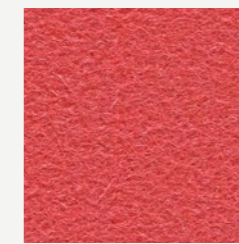
GOLDSMITH
CUZ39



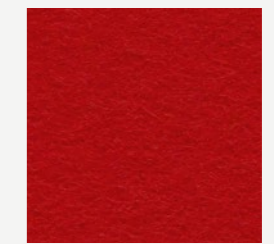
EDGE HILL
CUZ90



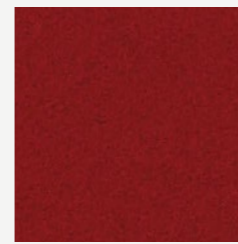
STANFORD
CUZ2R



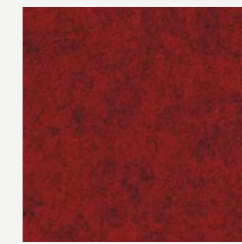
BARLBOROUGH
CUZ3D



ORIEL
CUZ18



WELLINGTON
CUZ13



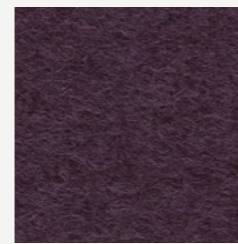
HANDCROSS
CUZ63



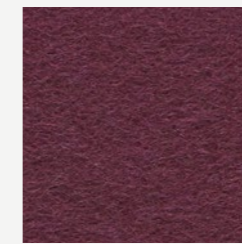
SHEFFIELD
CUZ1T



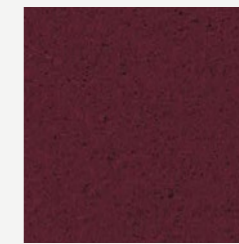
SCOTTSDALE
CUZ3E



HOLYOKE
CUZ2T



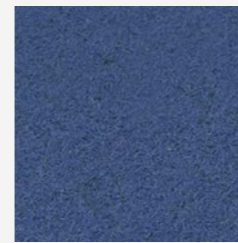
BARNARD
CUZ2S



MAGDALENE
CUZ21



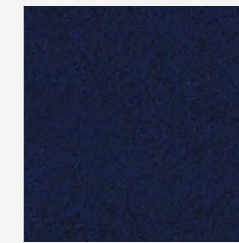
MARYMOUNT
CUZ3C



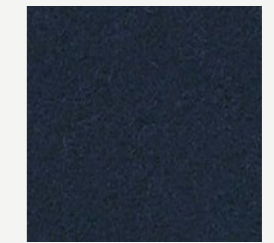
MANCHESTER
CUZ1V



NEWCASTLE
CUZ1W



OXFORD
CUZ09

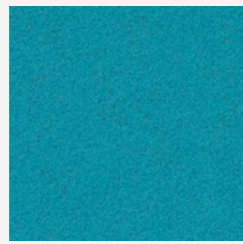


EDINBURGH
CUZ1Y

CAMIRA - BLAZER



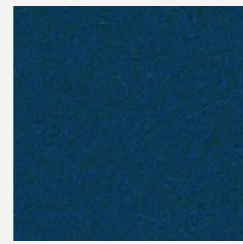
WOODCROFT
CUZ2Z



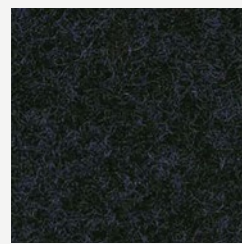
ASTON
CUZ02



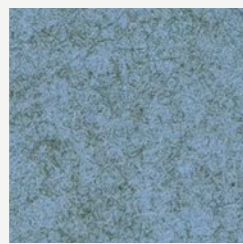
VASSAR
CUZ2U



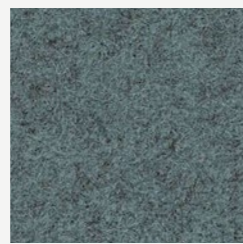
KNIGHTSBRIDGE
CUZ26



GLENALMOND
CUZ62



PLYMOUTH
CUZ1R



LATYMER
CUZ33



ABERTAY
CUZ3B



HULL
CUZ1P



WINCHESTER
CUZ12



NEWPORT
CUZ1L



MONTCREST
CUZ3A



PENOLA
CUZ2X



BRYANSTON
CUZ53



ULSTER
CUZ1F



CAMP HILL
CUZ1K



CARDIFF
CUZ1N



GLASGOW
CUZ1M



DARTMOUTH
CUZ2Q



FAIRFIELD
CUZ47

CAMIRA - BLAZER



ST ANDREWS
CUZ86



TREVELYAN
CUZ31



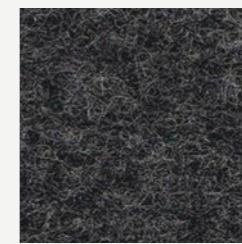
SILVERDALE
CUZ28



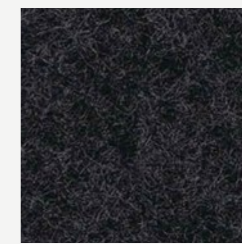
SURREY
CUZ1E



ABERLOUR
CUZ1J



SILCOATES
CUZ30



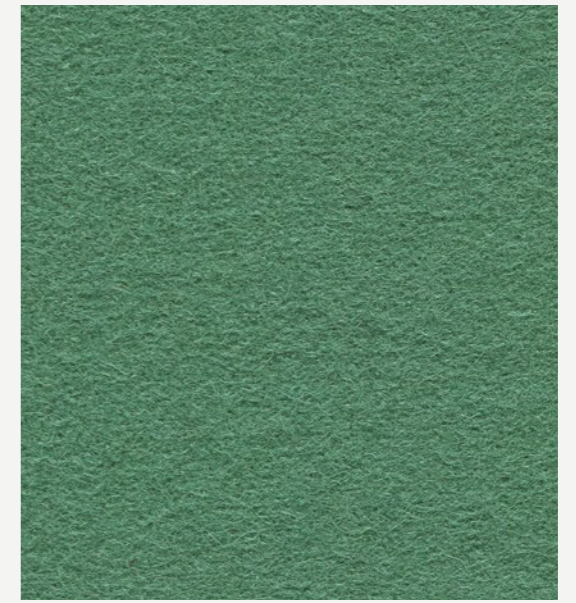
BROMSGROVE
CUZ35



KINGSMEAD
CUZ67



NAPIER
CUZ08



TYNDALE
CUZ2Y

CAMIRA - BLAZER



CAMIRA - BLAZER

PRODUCT SPECIFICATIONS

Application	Task Seating / Soft Seating / Curtains
Composition	100% Virgin Wool. Non metallic dyestuffs
Environmental	Certified to Indoor Advantage™ "Gold" Rapidly renewable and compostable
Width	140 cm minimum
Weight	460 g/m2 ±5%
Abrasion Resistance	Heavy duty / 10 year guarantee. Independently certified to ≥50,000 Martindale cycles
Flammability	EN 1021 - 1&2 (cigarette & match), BS 7176 Low Hazard, NF D 60-013, ÖNORM B 3825 & A 3800-1 (58kg/m3 CMHR Foam), UNI 9175 Classe 1 IM, BS 476 Part 7 Class 1 (Adhered) EN 13501-1 Adhered Class D, s1, d0, BS 5852 Ignition Source 5 when FR treated BS 7176 Medium Hazard when FR treated, BS 476 Part 6 Class 0 when FR treated (Adhered) EN 13501-1 Adhered Class B, s1, d0 when FR treated, EN 13501-1 Un-adhered Class D, s2, d0 when FR treated, BS 5867-2 Type B Curtains & Drapes when FR treated, The Furniture and Furnishing (Fire) (Safety), Regulations 1988 (Domestic Cigarette and Match), IMO FTP Code (Part 8)
Light Fastness	5 (ISO 105 - B02)
Fastness to Rubbing	Wet: 4, Dry: 4 (ISO 105 - X12)
Guarantee	10 Years

Cleaning

Vacuum regularly. Wipe with a damp cloth using soap and water or use proprietary upholstery shampoo. For deeper cleaning use steam or professionally dry clean.

Oceanic

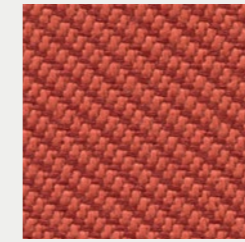
Oceanic is a fabric born of the Seaqual Initiative designed to combat marine plastic pollution and achieve a waste free environment.

CLASS D

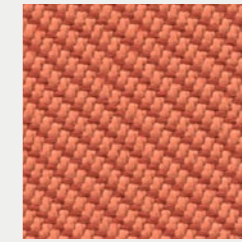
CAMIRA - OCEANIC



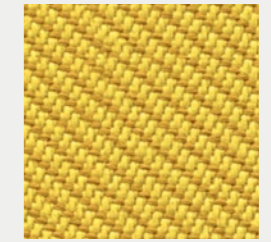
ABYSS
OOC10



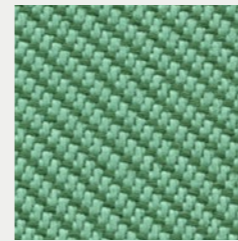
AQUATIC
OOC12



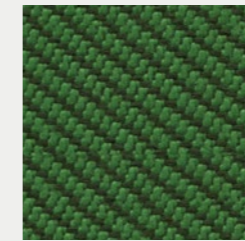
CORAL
OOC05



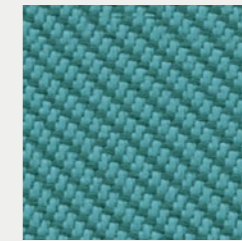
BARRIER
OOC07



SEA
OOC04



COAST
OOC03



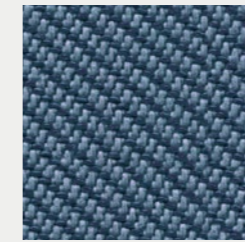
JETSAM
OOC02



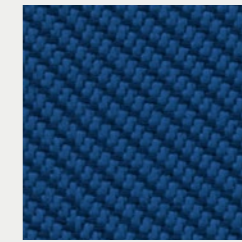
PADDLE
OOC13



GULF
OOC15



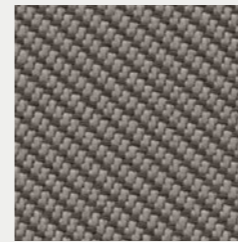
NEPTUNE
OOC11



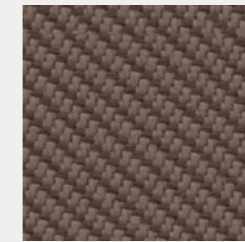
ATOLL
OOC06



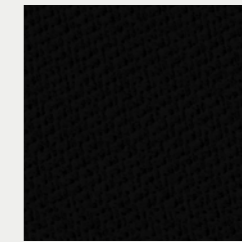
RIPTIDE
OOC14



BAY
OOC08



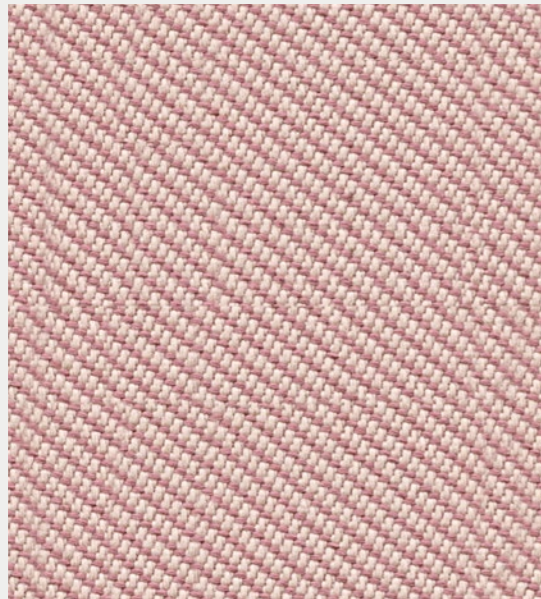
SHORE
OOC09



FLOTSAM
OOC01

FABRIC & LEATHER

CAMIRA - OCEANIC

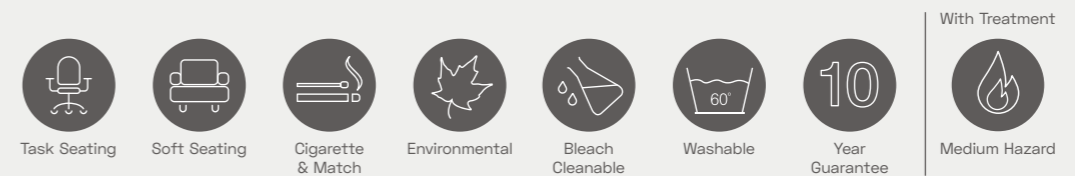


SEAFARER
OOC16

CAMIRA - OCEANIC

PRODUCT SPECIFICATIONS

Application	Task Seating / Soft Seating
Composition	100% post-consumer recycled polyester, including 50% SEAQUAL yarn
Environmental	Certified to the EU Ecolabel Certified to OEKO-TEX® Standard 100 Certified to Indoor Advantage™ Gold Made from 100% post-consumer recycled polyester Non metallic dyestuffs
Width	140 cm minimum
Weight	497 g/m2 ±5% (696g/lin.m ±5%)
Abrasion Resistance	Heavy duty / 10 year guarantee. Independently certified to ≥100,000 Martindale cycles
Flammability	EN 1021 - 1&2 (cigarette & match) BS 7176 Low Hazard Optional: Please specify when ordering BS 5852 Ignition Source 5 with EnviroFlam5 BS 7176 Medium Hazard with EnviroFlam5 Note: Flammability performance is dependent on components used. Our certificates show what substrates have been used in our tests. For composite tests customers must ensure their complete furniture meets the necessary standards.
Light Fastness	5 (ISO 105 - B02), OOC16: 4/5 (ISO 105 - B02)
Fastness to Rubbing	Wet: 4, Dry: 4 (ISO 105 - X12)
Bleach Cleanable	ISO 105 E03 colour change 4 for dilution factor 1:4 chlorine solution.
Cleaning	Vacuum regularly. Wipe with a damp cloth using proprietary upholstery shampoo/soap. For deeper cleaning use steam, bleach, alcohol or professionally dry clean. Can be washed at 60°C.
Guarantee	10 Years

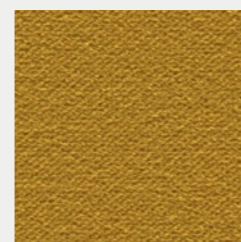


Regent

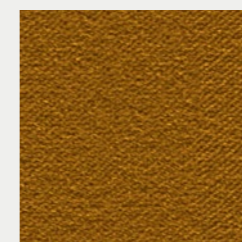
A beautifully modern approach to velvet, Regent effortlessly combines glamour with practicality.

CLASS D

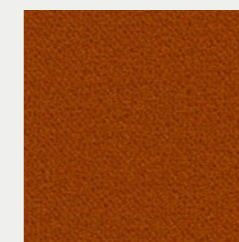
CAMIRA - REGENT



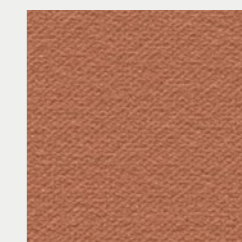
NOVELLA
REG09



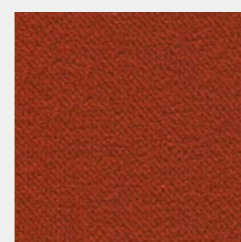
SAVOY
REG10



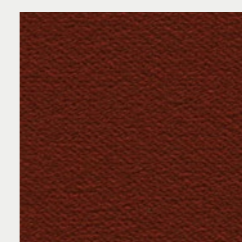
GRAND
REG07



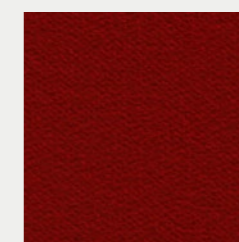
ALHAMBRA
REG01



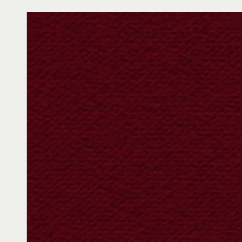
WINTER GARDENS
REG02



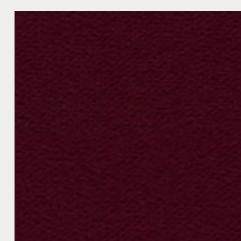
MINACK
REG08



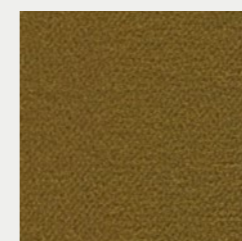
ADELPHI
REG04



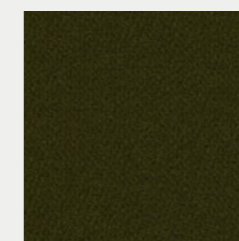
DRURY LANE
REG05



CARNEGIE
REG03



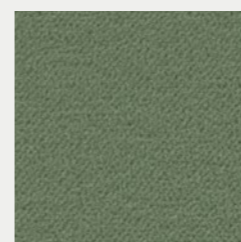
OPERA
REG14



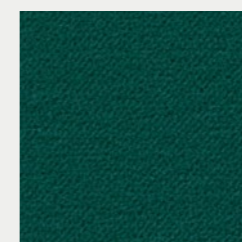
BLOOMSBURY
REG15



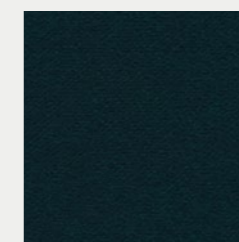
LYCEUM
REG16



ORCHESTRA
REG18



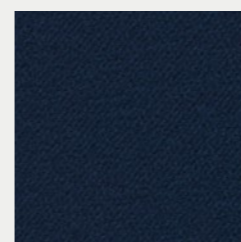
RECITAL
REG19



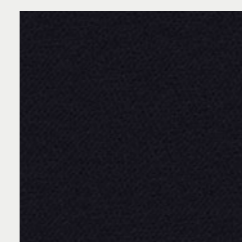
BROADHURST
REG22



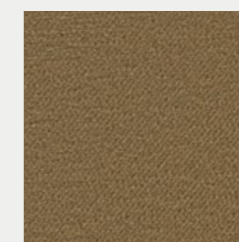
MAJESTIC
REG20



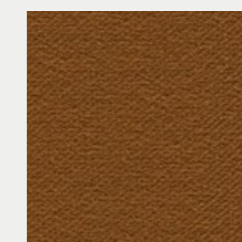
BELFREY
REG24



BELASCO
REG25



WYNDHAMS
REG11



CLARIDGES
REG12

FABRIC & LEATHER

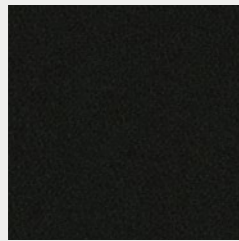
CAMIRA - REGENT



AMBASSADOR
REG26



BELGRADE
REG28



CONSERVATOIRE
REG29



MARQUIS
REG23

CAMIRA - REGENT

PRODUCT SPECIFICATIONS

Application	Task Seating / Soft Seating / Curtains
Composition	100% Flame Retardant Polyester
Width	140 cm minimum
Weight	400 g/m ² ±5% (560g/lin.m ±5%)
Abrasion Resistance	Heavy duty / 5 year guarantee Independently certified to ≥50,000 Martindale cycles
Flammability	EN 1021 - 1&2 (cigarette & match) BS 7176 Low Hazard BS 5852 Ignition Source 5 DIN 4102 B1 NF D 60-013 UNI 9175 Classe 1 IM NF P 92-507 M1 BS 7176 Medium Hazard BS 5867 : Part 2 : Type B Curtain & Drapes Note: Flammability performance is dependent on components used. Our certificates show what substrates have been used in our tests. For composite tests customers must ensure their complete furniture meets the necessary standards.
Light Fastness	5 (ISO 105 - B02)
Fastness to Rubbing	Wet: 4, Dry: 4 (ISO 105 - X12)
Bleach Cleanable	ISO 105 E03 colour change 4 for dilution factor 1:4 chlorine solution.
Cleaning	Vacuum regularly. Wipe with a damp cloth using soap and water or use proprietary upholstery shampoo. For deeper cleaning use steam, bleach, alcohol or professionally dry clean.
Guarantee	5 Years



Task Seating



Soft Seating



Cigarette
& Match



Medium Hazard
M1 / B1



Bleach
Cleanable



5
Year
Guarantee

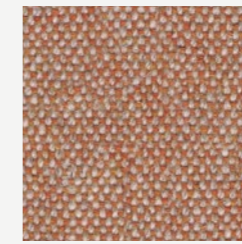
Main Line Flax

A new inherently flame retardant fabric from sustainable sources with strong, long and smooth fibres.

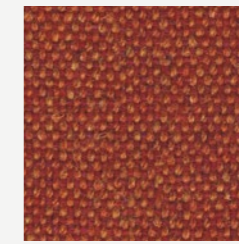
CAMIRA - MAIN LINE FLAX



ALPERTON
MLF43



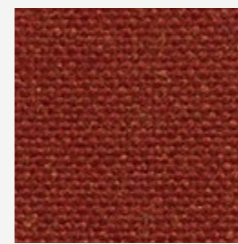
LAMBETH
MLF08



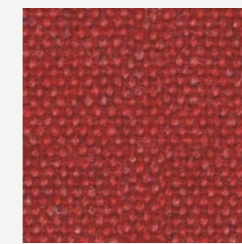
LEYTON
MLF13



BALHAM
MLF44



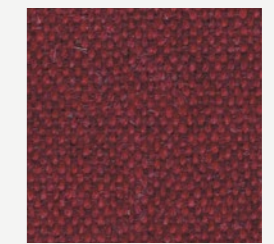
BARKING
MLF45



ALDGATE
MLF01



KILBURN
MLF06



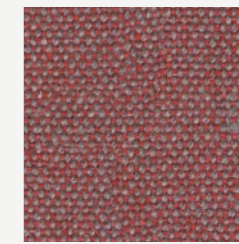
PARSONS
MLF14



BLACKWALL
MLF46



NORTHFIELDS
MLF40



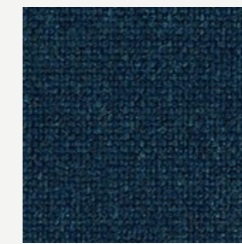
BARBICAN
MLF03



BRIXTON
MLF47



CHIGWELL
MLF48



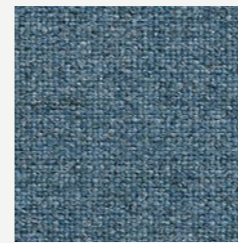
EMBANKMENT
MLF50



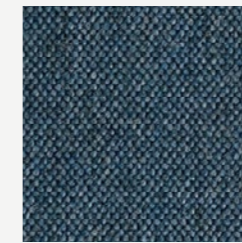
TOWER
MLF36



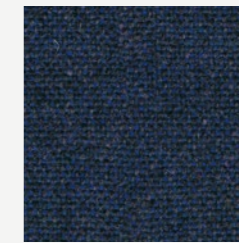
WATERLOO
MLF21



EPPING
MLF51



CLAPHAM
MLF49



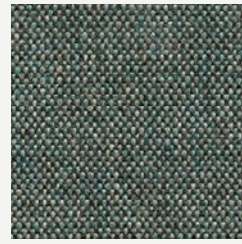
BROMPTON
MLF35



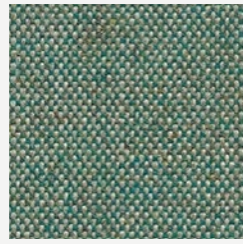
VICTORIA
MLF19

CLASS C

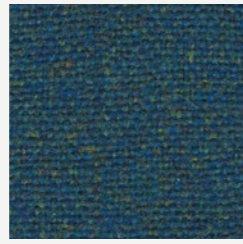
CAMIRA - MAIN LINE FLAX



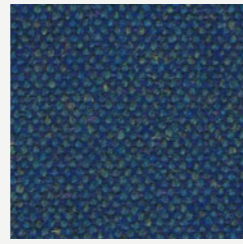
WESTMINSTER
MLF22



BAYSWATER
MLF24



STANMORE
MLF37



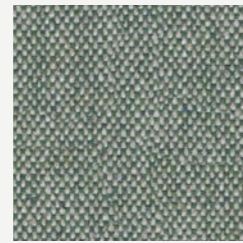
PIMLICO
MLF34



HOLBORN
MLF05



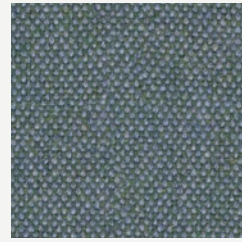
NEWBURY
MLF10



MONUMENT
MLF09



GREENWICH
MLF52



BETHNAL
MLF25



HARROW
MLF54



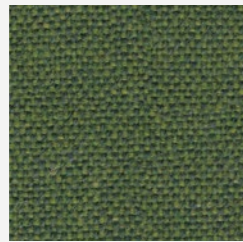
HORNCHURCH
MLF55



HAMPSTEAD
MLF53



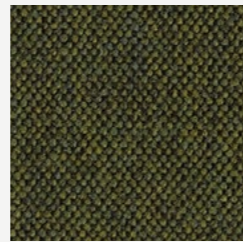
GREENFORD
MLF32



TUFNELL
MLF18



FARRINGDON
MLF29



KENTISH
MLF56



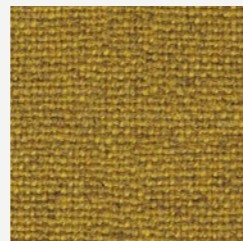
MOORGATE
MLF57



WOODFORD
MLF67



GOLDHAWK
MLF31



TOOTING
MLF17

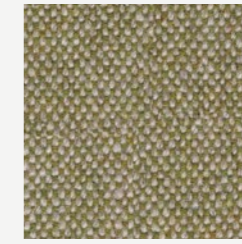
CAMIRA - MAIN LINE FLAX



PERIVALE
MLF59



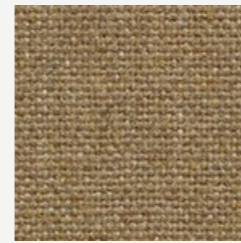
STOCKWELL
MLF15



KENSINGTON
MLF07



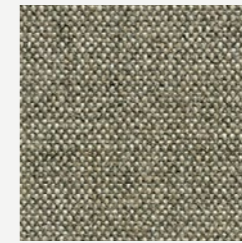
MORDEN
MLF12



PINNER
MLF60



BANK
MLF23



ARCHWAY
MLF02



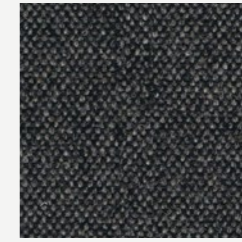
REDBRIDGE
MLF61



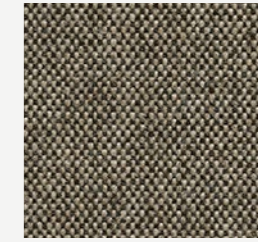
CAMDEN
MLF26



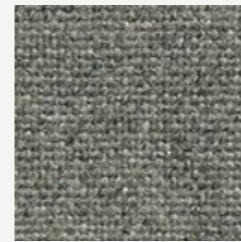
RICHMOND
MLF62



TEMPLE
MLF16



SHADWELL
MLF63



STRATFORD
MLF64



WATFORD
MLF65



WHITECHAPEL
MLF66



EDWARE
MLF28

CAMIRA - MAIN LINE FLAX



UPMINSTER
MLF20



Colors may slightly vary due to photographic lighting sources or your monitor settings.

CAMIRA - MAIN LINE FLAX

PRODUCT SPECIFICATIONS

Application	Task Seating / Soft Seating / Curtains
Composition	75% Virgin Wool, 25% Flax
Environmental	Certified to the EU Ecolabel Certified to Indoor Advantage™ "Gold" Rapidly renewable and compostable. Made from wool and bast fibre.
Width	140 cm minimum
Weight	437 g/m2 ±5%
Abrasion Resistance	Heavy duty / 10 year guarantee. Independently certified to ≥50,000 Martindale cycles
Flammability	EN 1021 - 1&2 (cigarette & match), BS 7176 Low Hazard, BS 5852 Ignition Source 5 BS 7176 Medium Hazard, NF D 60-013, ÖNORM B 3825 & A 3800-1 (58kg/m3 CMHR Foam) UNI 9175 Classe 1 IM, BS 5867-2: Type B Curtains & Drapes, IMO FTP Code (Part 8) The Furniture and Furnishing (Fire) (Safety) Regulations 1988 (Domestic Cigarette and Match)
Light Fastness	5 (ISO 105 - B02)
Fastness to Rubbing	Wet: 3, Dry: 4 (ISO 105 - X12)
Guarantee	10 Years

Cleaning

Vacuum regularly. Wipe with a damp cloth using soap and water or use proprietary upholstery shampoo.
For deeper cleaning use steam or professionally dry clean.

Colors may slightly vary due to photographic lighting sources or your monitor settings.

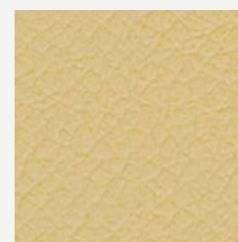
Vita

A leather-look vinyl with a subtle surface grain effect and full matt appearance.

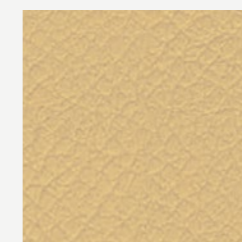
CLASS C



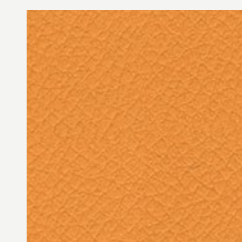
CAMIRA - VITA



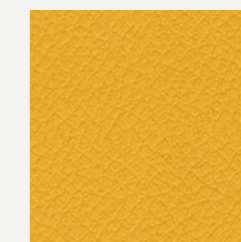
CORNSILK
ITA37



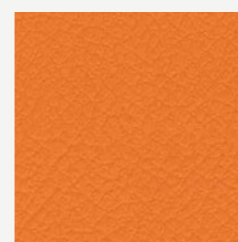
DAISY
ITA43



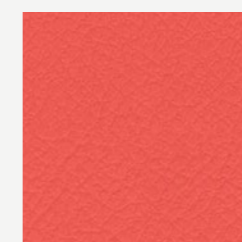
YELLOW
ITA03



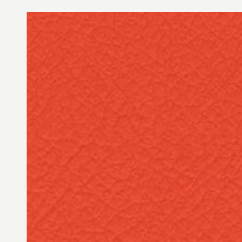
LEMON
ITA33



CARROT
ITA41



PUNCH
ITA35



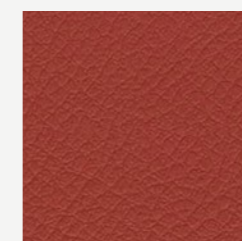
SQUASH
ITA05



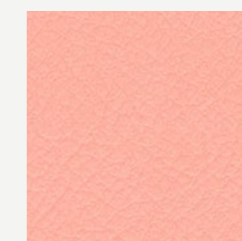
AMPLIFIED
ITA52



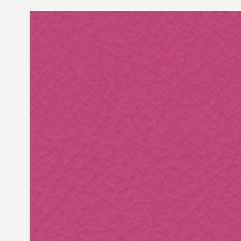
TOMATO
ITA08



RUST
ITA11



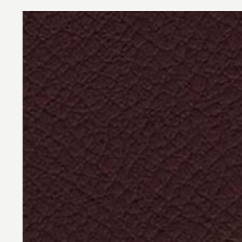
HOLLYHOCK
ITA51



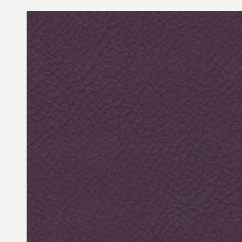
FLAMINGO
ITA34



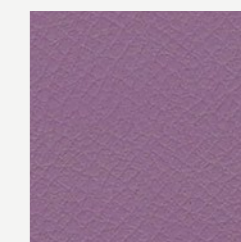
PINK
ITA20



SIN
ITA50



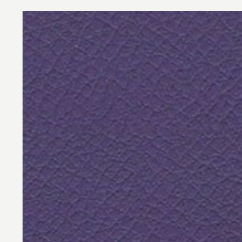
PLUM
ITA23



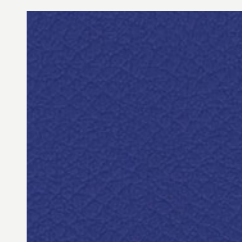
WISTERIA
ITA49



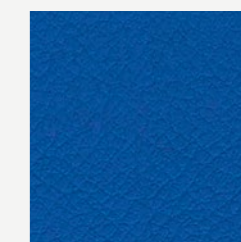
AMETHYST
ITA17



ENVY
ITA55



ROCKER
ITA53



CLASH
ITA56

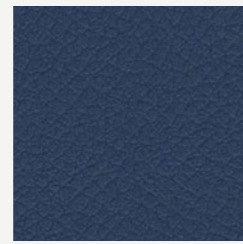
CAMIRA - VITA



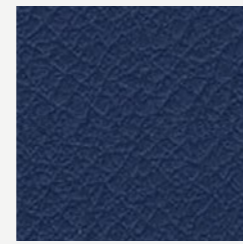
BUBBLES
ITA36



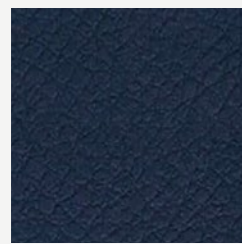
PORCELAIN
ITA15



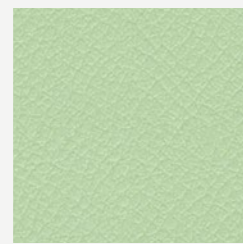
SAIL
ITA54



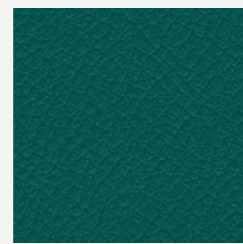
MARINA
ITA21



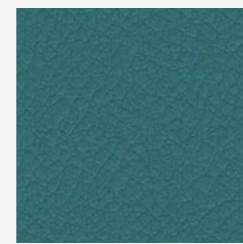
NAVY
ITA22



SURF
ITA48



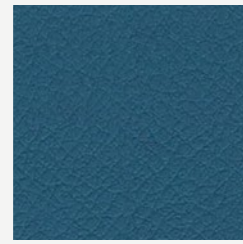
BREEZE
ITA32



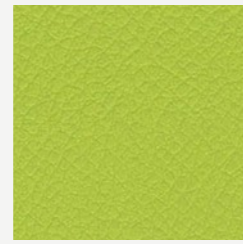
WATERFALL
ITA18



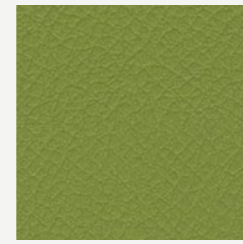
SAPPHIRE
ITA16



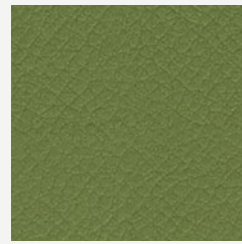
PEACOCK
ITA19



SPRING
ITA40



AVOCADO
ITA06



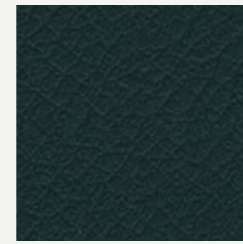
OLIVE
ITA09



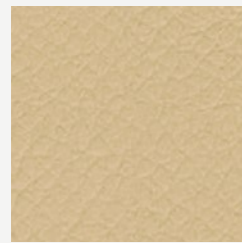
YUCCA
ITA30



SEAL
ITA01



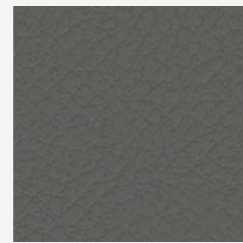
SEAWEED
ITA31



BONE
ITA38



SWAN
ITA42

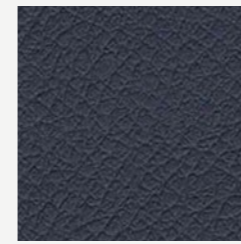


PIGEON
ITA45

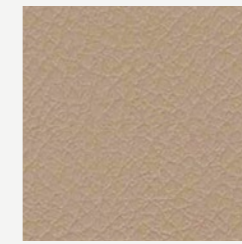


KOALA
ITA04

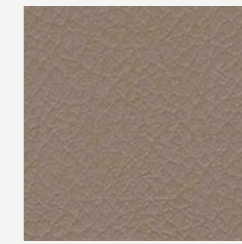
CAMIRA - VITA



HIPPO
ITA07



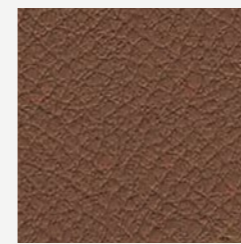
CHIFFON
ITA44



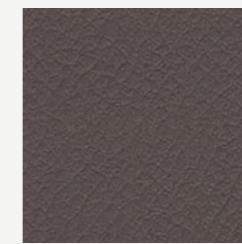
OATMEAL
ITA02



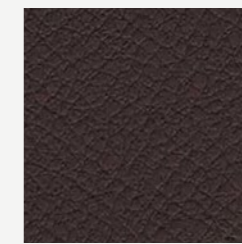
ALPACA
ITA46



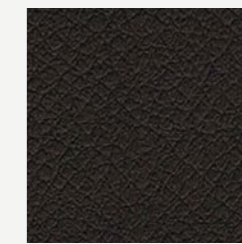
GOLDEN
ITA39



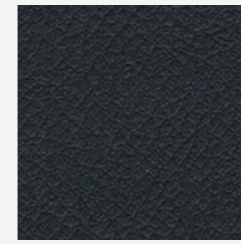
TAUPE
ITA10



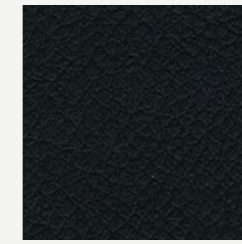
ESPRESSO
ITA14



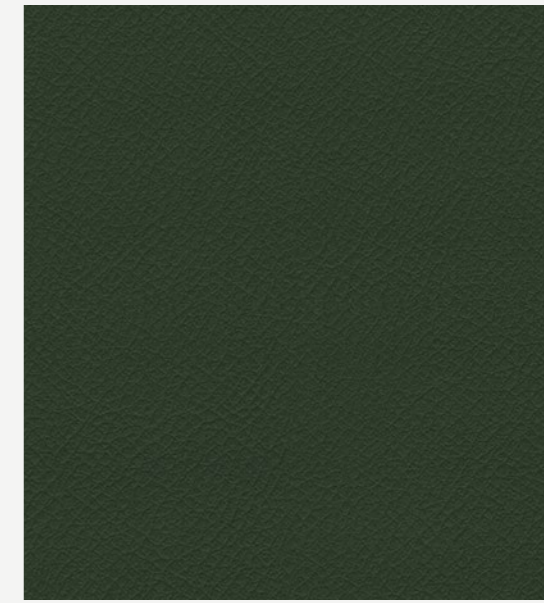
AMERICANO
ITA13



BEETLE
ITA47



NOIR
ITA12



WREATH
ITA29

CAMIRA - VITA



CAMIRA - VITA

PRODUCT SPECIFICATIONS

Application	Task Seating / Soft Seating
Composition	Surface: 98% PVC, 2%. PU Substrate: 100% Cotton
Width	140 cm minimum
Weight	850 g/m2 ±5%
Abrasion Resistance	Heavy duty / 5 year guarantee ISO 5470-2 100,000 rubs (Grade 2 minimum)
Flammability	EN 1021 - 1&2 (cigarette & match), BS 7176 Low Hazard, BS 5852 Ignition Source 5 BS 7176 Medium Hazard, BS 5852 Ignition Source 7 (with interliner), UNI 9175 Classe 1 IM The Furniture and Furnishing (Fire) (Safety) Regulations 1988 (Domestic Cigarette and Match) IMO FTP Code (Part 8)
Flexes	ISO 7854 Method B 400,000 Flexing cycles / 5 year guarantee (full details available)
Light Fastness	6 (ISO 105 - B02)
Fastness to Rubbing	Wet: 4, Dry: 4 (ISO 105 - X12)
Bleach cleanable	ISO 105 E03 colour change 4 for dilution factor 1:4 chlorine solution.
Waterproof	Hydrostatic head BS 3424 Part 26 > 1 metre
Urea resistance	BS 3424 Part 19 no significant deterioration after 24 hrs
Anti-microbial	AATCC 147
Guarantee	5 Years

Cleaning
Vacuum regularly. Wipe with a damp cloth using soap and water or use proprietary upholstery shampoo.
For deeper cleaning use bleach or alcohol.

Fox

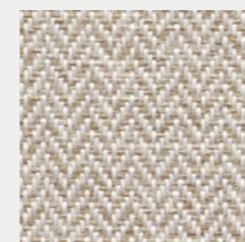
A selection that takes its elegance from calm and simple colours and makes a difference with its texture.

CLASS C

FIDIVI - FOX



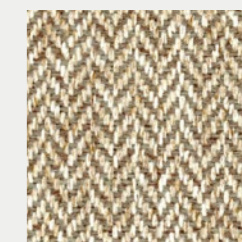
9622



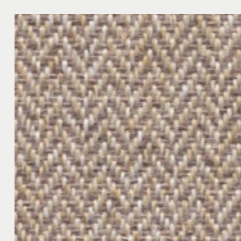
9107



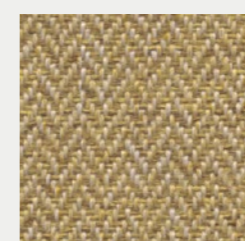
9113



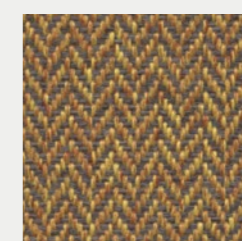
9202



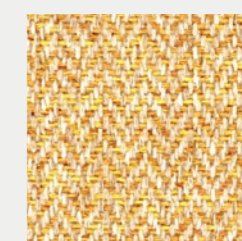
9108



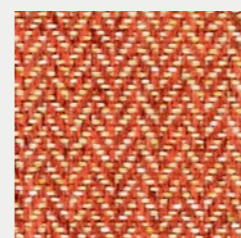
9114



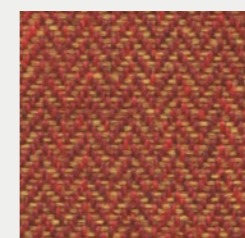
9302



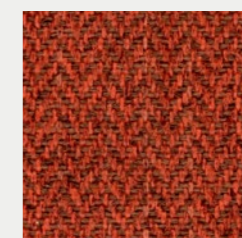
9203



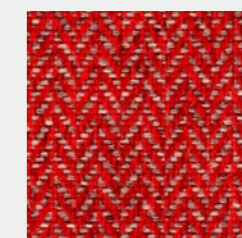
9322



9407



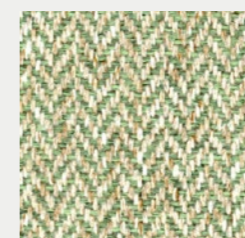
9312



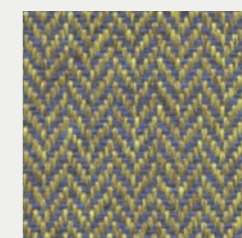
9412



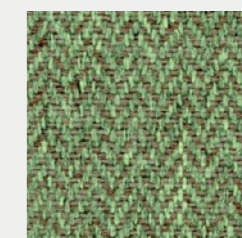
9402



9217



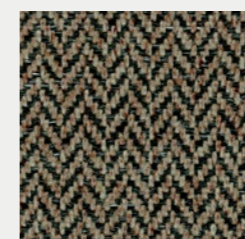
9706



9702



9705



9212



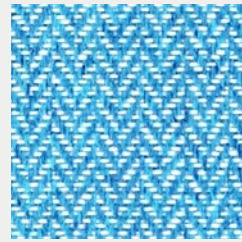
9106



9616

FABRIC & LEATHER

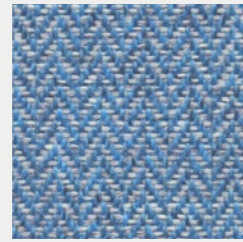
FIDIVI - FOX



9601



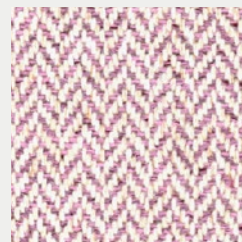
9604



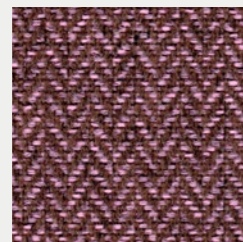
9602



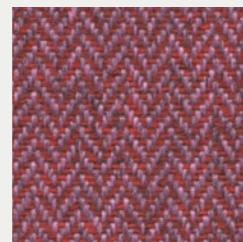
9612



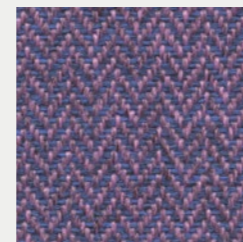
9215



9205



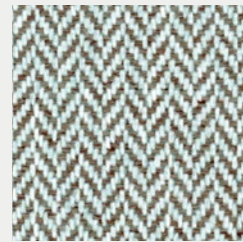
9501



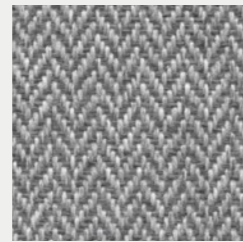
9504



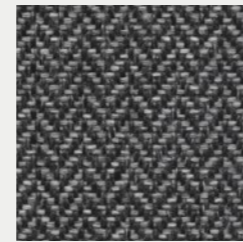
9109



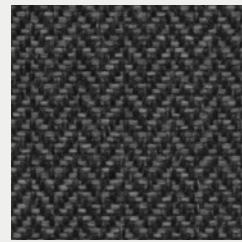
9632



9805



9803



9804



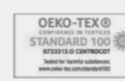
9703

Colors may slightly vary due to photographic lighting sources or your monitor settings.

FIDIVI - FOX

PRODUCT SPECIFICATIONS

Description	Yarn dyed 2 color melange fabric. Wool handtouch, fishbone design, in 22 colorways	
Application	Office, Contract	
Weight	525 ± 5 % g/ml 350 ± 5 % g/m ²	
Height	150 ± 2 % cm	
Composition	100% Polyester Trade Mark Trevira CS	
Abrasion Resistance	ISO 12947/2 120.000 ± 10 % Rubs	
Light Fastness	ISO 105-B02 6 (blue scale) Tolerance: from 5 to 8	
Fastness to Rubbing	ISO 105-X12 4/5 (grey scale) Tolerance: from 4 to 5	
Pilling (2000 rubs)	ISO 12945-2 5 Tolerance: from 4 to 5	
Acoustic Performances	ISO 9053 (Air flow)	
Fire Resistance	UNI 9174 Class 1 can meet UNI 9175 Class 1 IM can meet DIN 4102 Class B1 NF P 92 501-7 Class M1 NF D 60013 Class AM18 can meet EN 1021-1 & 2 BS 5852 Crib 5 BS 7176 Medium Hazard EN 13773 Class 1 can meet OENORM 3800-1 Class B1,Q1,TR1 can meet California TB 117:2013 can meet USA NFPA 701 can meet USA NFPA 260 can meet IMO Part 8 Upholstery	Will also pass other flammability standards. Flame retardant performance is dependent upon the foam used.
Certifications	Oekotex Euflower - Ecolabel	
Warranty	5 Years	
Cleaning and Washing		



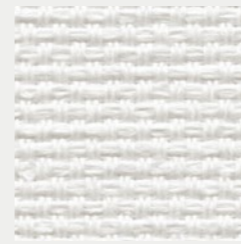
Colors may slightly vary due to photographic lighting sources or your monitor settings.

Laser J

The intense fabric experience comes with its attentive design.

CLASS C

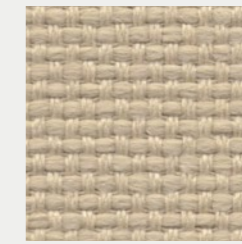
FIDIVI - LASER J



0001



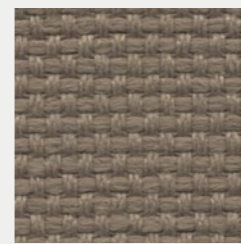
1049



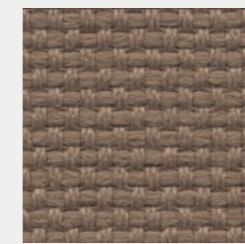
1014



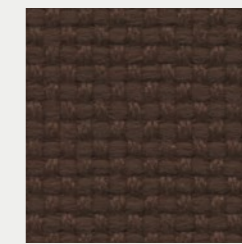
1003



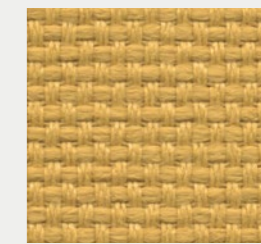
8006



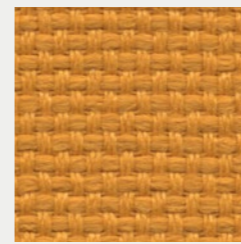
2048



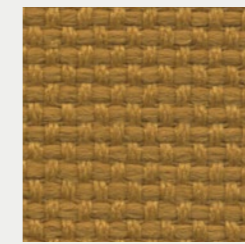
2036



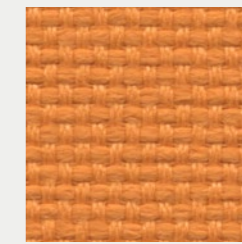
3009



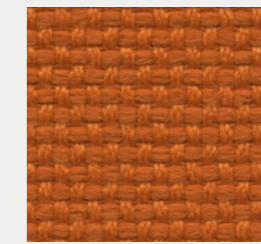
3004



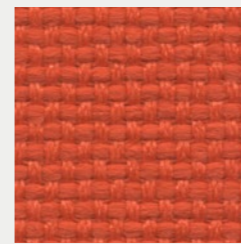
3081



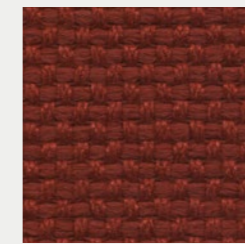
3094



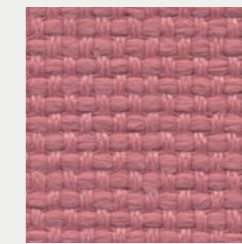
3082



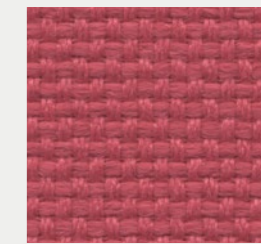
3012



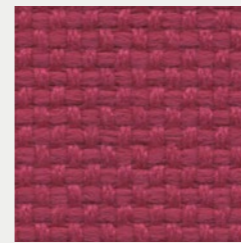
4017



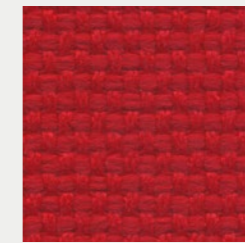
4079



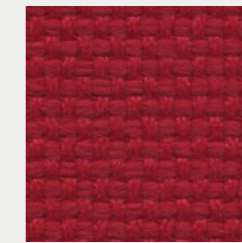
4073



4024



4021



4011



6083

365

Colors may slightly vary due to photographic lighting sources or your monitor settings.

FABRIC & LEATHER

FIDIVI - LASER J



6020



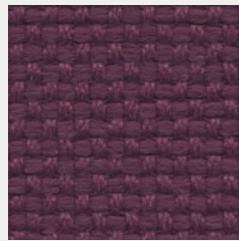
6071



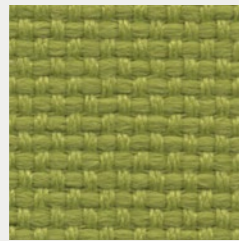
6098



5096



5003



7025



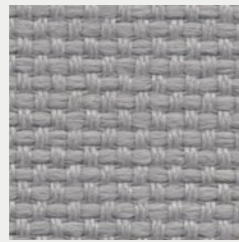
7021



8015



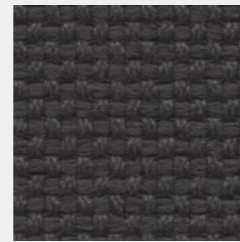
7014



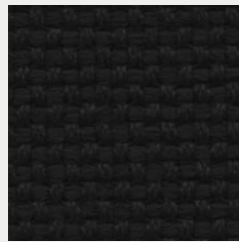
8027



8078



8017



8033



6075

Colors may slightly vary due to photographic lighting sources or your monitor settings.

FIDIVI - LASER J

PRODUCT SPECIFICATIONS

Description	Fabric in 34 united colors	
Application	Office, Contract	
Weight	735 ± 5 % g/ml 525 ± 5 % g/m ²	
Height	140 ± 2 % cm	
Composition	100% Polyester Trevira CS	
Abrasion Resistance	ISO 12947/2 150.000 ± 10 % Rubs	
Light Fastness	ISO 105-B02 6 (blue scale) Tolerance: from 5 to 8	
Fastness to Rubbing	ISO 105-X12 4/5 (grey scale) Tolerance: from 4 to 5	
Pilling (2000 rubs)	ISO 12945-2 5 Tolerance: from 4 to 5	
Acoustic Performances	ISO 9053 (Air flow) ISO 354 (Reverberation Room), 0,8	
Fire Resistance	UNI 9174 Class C1 UNI 9175 Class 1 IM DIN 4102 Class B1 NF P 92 501-7 M1 NF D 60013 Class AM18 EN 1021-1 & 2 BS 5852 Crib 5 BS 7176 Class Medium Hazard EN 13773 Class 1 can meet OENORM 3800-1 Class B1,Q1,TR1 can meet California TB 117:2013 USA NFPA 701 can meet USA NFPA 260 can meet IMO Part 8 Upholstery	Will also pass other flammability standards. Flame retardant performance is dependent upon the foam used.
Stain Repellent Treatment	Trademark Trevira B1 certificate MOQ 250m	
Certifications	Oekotex Euflower - Ecolabel	
Warranty	5 Years	
Cleaning and Washing		



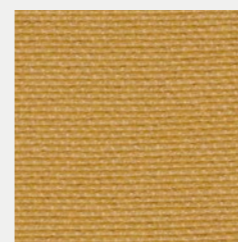
Colors may slightly vary due to photographic lighting sources or your monitor settings.

Silvertex

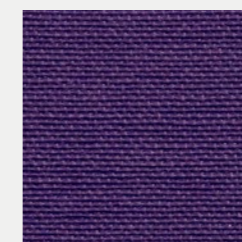
A serene and dynamic touch, thanks to its broad spectrum.

CLASS C

SPRADLING - SILVERTEX



CAMEL
122-2105



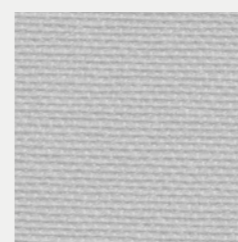
ULTRA VIOLET
122-2104



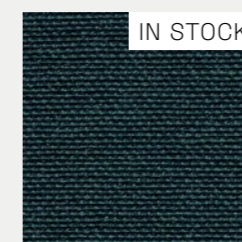
SKYLIGHT
122-2103



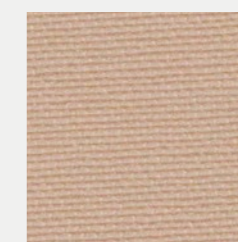
CORAL
122-2102



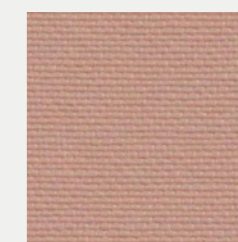
ALUMINIUM
122-2101



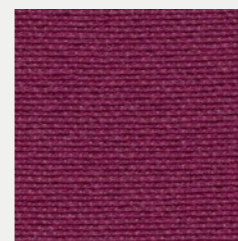
TEAL
122-2100



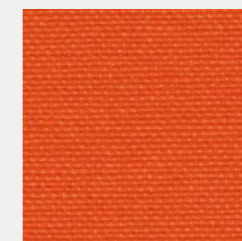
LOTUS
122-2099



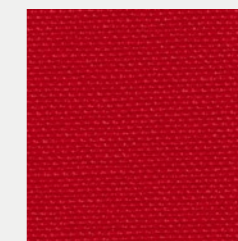
ROSÉ
122-2098



ORCHID
122-2097



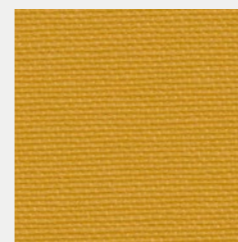
TOMATO
122-2096



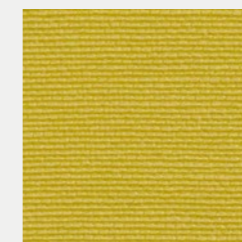
GRENADINE
122-2095



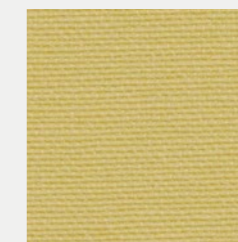
PETROL
122-2094



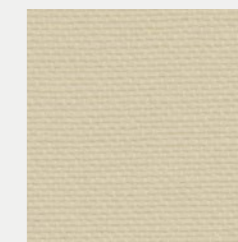
SQUASH
122-2093



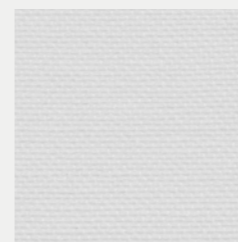
AVOCADO
122-2092



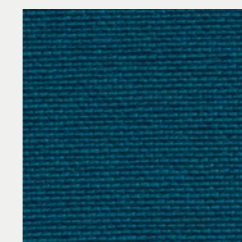
CITRUS
122-2091



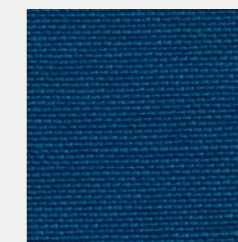
ICE CREAM
122-2090



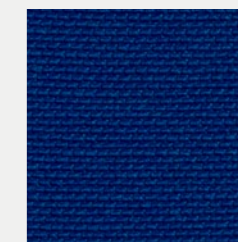
WHITE
122-2089



TURQUOISE
122-3001



BALTIC
122-3066



DELFT
122-3067

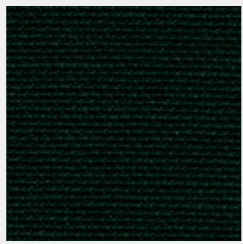
SPRADLING - SILVERTEX



JET
122-3068



SAPPHIRE
122-3007



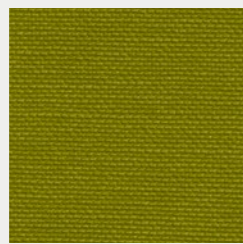
FOREST
122-5063



BOTTLE
122-5010



BASIL
122-5020



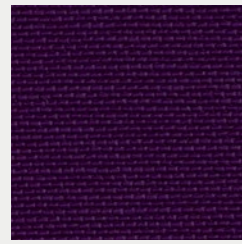
PISTACHO
122-5008



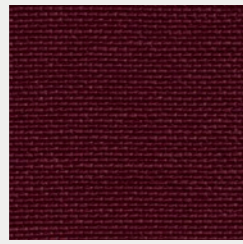
CELERY
122-5019



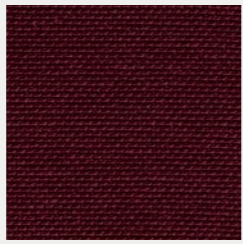
SAGE
122-5009



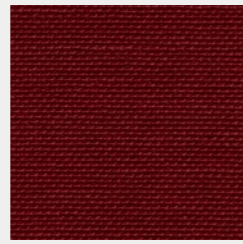
AUBERGINE
122-7001



RASPBERRY
122-2016



RUBIN
122-6004



WINE
122-2064



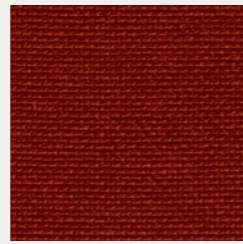
UMBER
122-1014



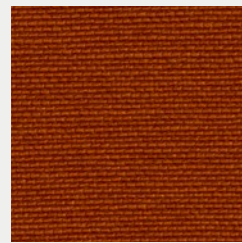
MAGENTA
122-7002



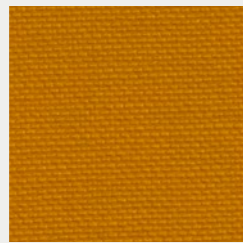
RED
122-2011



SUNKIST
122-2012



MANDARIN
122-6061



SAFRAN
122-6065



MELON
122-6062



ORANGE
122-0013

SPRADLING - SILVERTEX



LUGGAGE
122-0073



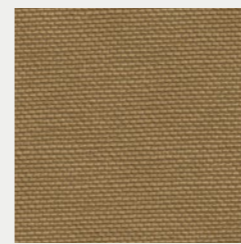
ICE
122-4004



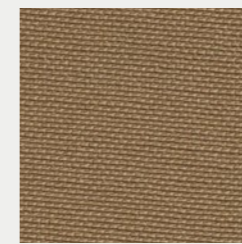
CREAM
122-1077



SISAL
122-1051



CHAMPAGNE
122-1078



BEIGE
122-1010



MACADAMIA
122-0001



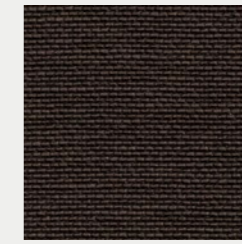
SANDSTONE
122-0002



TAUPE
122-0009



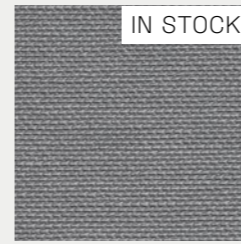
SHIITAKE
122-4012



METEOR
122-4024



MOCCA
122-0005



PLATA
122-4001



STERLING
122-4011



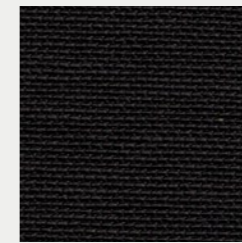
TITANIUM
122-4010



STORM
122-4002



GRAPHITE
122-4003

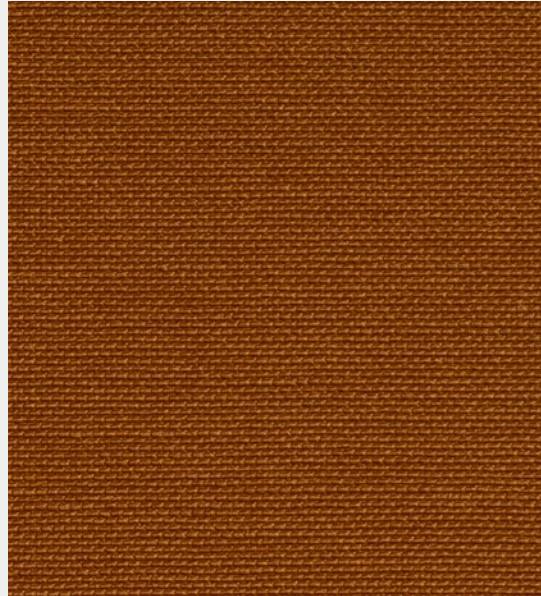


CARBON
122-9002



BLACK
122-9001

SPRADLING - SILVERTEX



COBRE
122-2003

SPRADLING - SILVERTEX

PRODUCT SPECIFICATIONS

Composition:	Topcoat :Vinyl Backing; 100% Polyester Hi-Loft2™
Weight:	685 gr/m2
Width:	min. 137 cm
Roll size:	+/- 30m
Abrasion:	>300.000 cycles (MARTINDALE)
Flame retardancy*:	EN 1021 Part 1 & 2 DIN 4102 B2 MED ECE R 1 18.02 Anx. 6,7 & 8 IMO 2010 FTP Part 8 UNI 9175 Classe I.IM UNE 23.727-90 IR/M.2 NF P 92-503 / M2 EN 71-2:2006+ A1:2007 FMVSS 302
Cold Crack:	-29°C
UV-Resistance:	ISO 105 B02: ≥ 7/8 (BlueWool Scale) ISO 104 B04: ≥ 4/5 (Grey Scale)
*This term and any corresponding data refer to the typical performance in the specific tests indicated and should not be construed to imply the behavior of this or any other material under actual fire conditions.	
FINISHES AND TREATMENTS PERMABLOK3®	
Virucidal Activity	ISO 18184:2019: Coated Fabrics treated with PERMABLOK3® are proven to reduce the presence of Coronavirus** by more than 90% within one hour of contact. ISO 21702:2019: All the Coated fabrics treated with PERMABLOK3® are capable of reducing the Coronavirus** activity by 99,9% within 24 hours of exposure on the surface. ISO 22196:2011. Value of antibacterial*** activity R>2.
Bacteriostatic Properties:	** Testing was conducted with material exposed to Feline Coronavirus (same coronaviridae family, structures and mechanisms similar to SARS-Cov2) ** Testing was conducted with material exposed to Staphylococcus aureus, Staphylococcus aureus (MRSA), Escherichia coli and Klebsiella pneumoniae.
WARRANTY	5 Years. Terms and conditions apply, Warranty conditions are displayed on our website.
CARE AND CLEANING	<ul style="list-style-type: none"> The vinyl should be cleaned periodically in order to maintain its appearance and prevent build-up of dirt and contaminants. Any stain, spills, or soiling should be cleaned up promptly to prevent the possibility of permanent staining. Vinyl fabrics treated with PERMABLOK3® require a minimum of maintenance to retain their good looks. Use soft soapy solutions or special cleaning products for vinyl fabrics to remove stains on the surface of the material. Remove only with a damp white cloth. Lacquers, strong cleaners, detergents, xylene-based solutions, acetone, or MEK cause immediate damage and contribute to the deterioration of the material. The use of such cleaners is at the owner's risk.

Certain clothing and accessory dyes (such as those used on denim jeans) may migrate to lighter colors. This phenomenon is increased by humidity and temperature and is irreversible. SPRADLING International GmbH, SPRADLING UK Ltd, and EURO SPRADLING S.L.U will not assume responsibility for dye transfer caused by external contaminants and possible permanent staining caused by this phenomenon.

PERMABLOK3® and SILVERTEX® are registered trademarks of Spradling Holdings, Inc.® | Hi-Loft2™ is trademark of Spradling Holdings, Inc.®

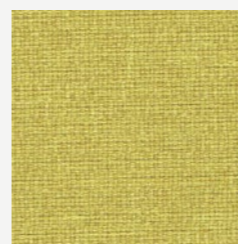
Aspect

A subtle mélange,
textured fabric
with a warm soft
handle, balancing
superior flammability
performance and
a natural aesthetic.

CLASS B



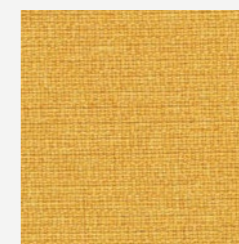
CAMIRA - ASPECT



SAHARA
ACT13



YOSEMITE
ACT14



ATACAMA
ACT01



AMALFI
ACT02



METEORA
ACT08



GORKHA
ACT12



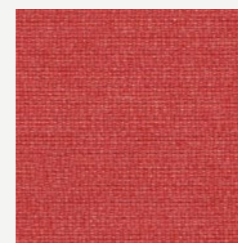
ZION
ACT09



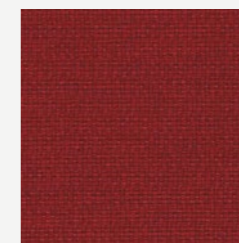
MARRAKECH
ACT03



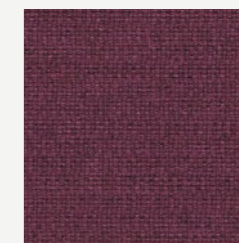
PETRA
ACT07



HALONG
ACT05



CAPPADOCIA
ACT04



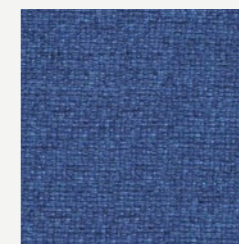
CALABRIA
ACT06



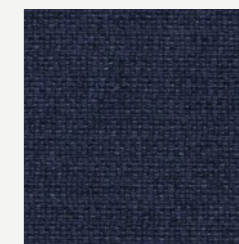
MATTERHORN
ACT19



MOLOKAI
ACT26



EVEREST
ACT27



RAINER
ACT24



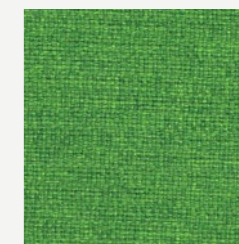
COMO
ACT22



LUCERNE
ACT23



PENYGHENT
ACT20



JASPER
ACT21

CAMIRA - ASPECT



CAPONES
ACT10



SERENGETI
ACT16



PATAGONIA
ACT18



CATBELLS
ACT17



PALENQUE
ACT11



BAMBURGH
ACT15



DOLOMITES
ACT28



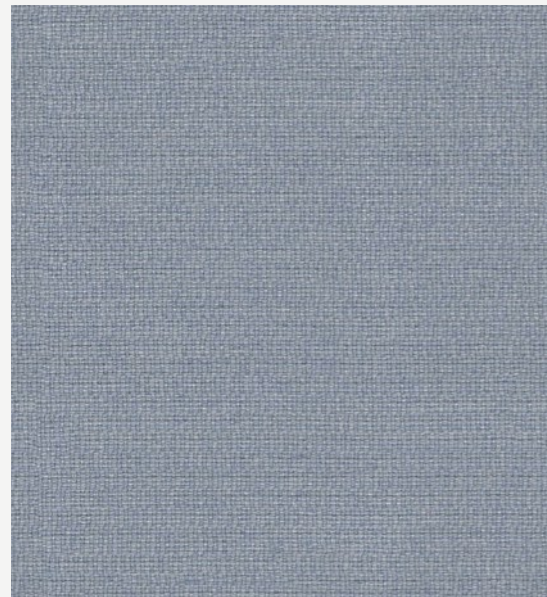
MALHAM
ACT29



GALAPAGOS
ACT30



AURORA
ACT31



OTAGO
ACT25



PRODUCT SPECIFICATIONS

Application	Task Seating / Soft Seating
Composition	75% Trevira® CS Flame Retardant Polyester, 25% Polyester. Non metallic dyestuffs.
Environmental	Certified to OEKO-TEX® Standard 100 Certified to Indoor Advantage™ "Gold"
Width	140 cm minimum
Weight	320 g/m2 ±5%
Abrasion Resistance	Heavy duty / 10 year guarantee. Independently certified to ≥50,000 Martindale cycles
Flammability	EN 1021 - 1&2 (cigarette & match), BS 7176 Low Hazard, BS 5852 Ignition source 5 (over CMHR 50kg/m3 foam), BS 7176 Medium Hazard (over CMHR 50kg/m3 foam), DIN 4102 B1, NF D 60-013 (Over 50kg/m3 CMHR foam), ÖNORM B 3825 & A 3800-1 (over CMHR 58kg/m3 foam), UNI 9175 Classe 1 IM
Light Fastness	5 (ISO 105 - B02)
Fastness to Rubbing	Wet: 4, Dry: 4 (ISO 105 - X12)
Bleach cleanable	ISO 105 E03 colour change 4 for dilution factor 1:4 chlorine solution.
Guarantee	10 Years

Cleaning

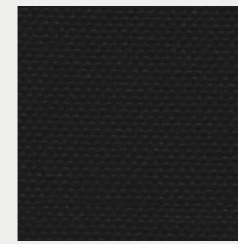
Vacuum regularly. Wipe with a damp cloth using soap and water or use proprietary upholstery shampoo. For deeper cleaning use steam, bleach, alcohol or professionally dry clean. Can be washed at 60°C.

Quest

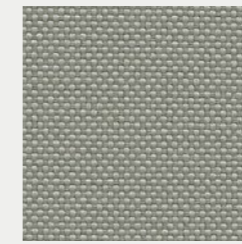
Woven entirely from post-consumer recycled plastic, this lightly textured, multi-application textile brings a touch of the ocean's natural beauty to commercial interiors.

CLASS B

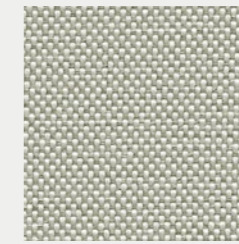
CAMIRA - QUEST



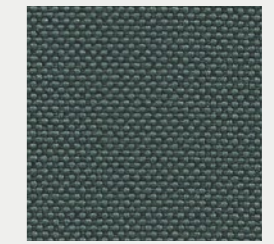
DEPTH
QUE01



FOSSIL
QUE02



BARNACLE
QUE03



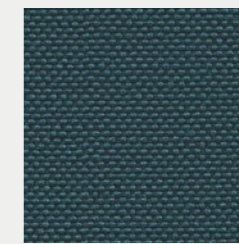
MUSSEL
QUE04



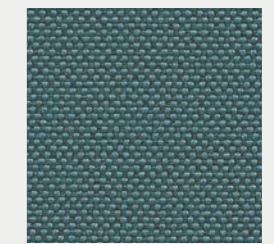
QUARTZ
QUE05



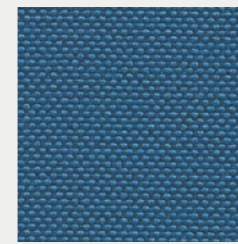
SHELL
QUE06



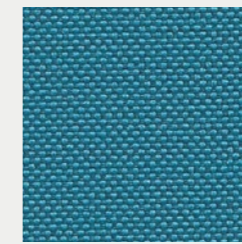
WHELK
QUE08



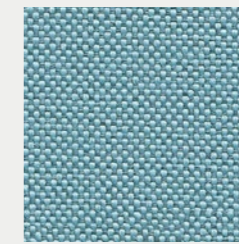
LIMPET
QUE09



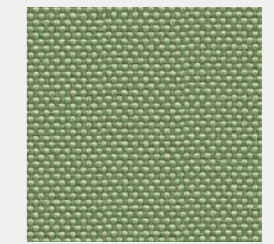
ROCK POOL
QUE10



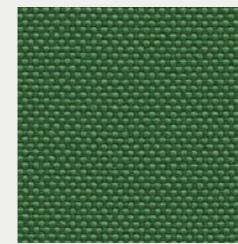
WAVE
QUE11



TIDE
QUE12



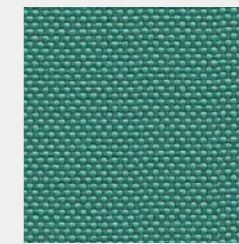
SEA GRASS
QUE13



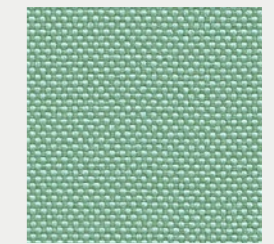
ALGAE
QUE14



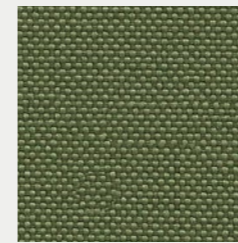
KELP
QUE15



SEA FOAM
QUE16



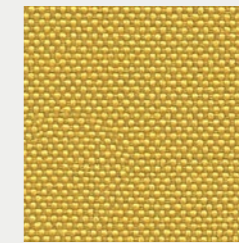
URCHIN
QUE17



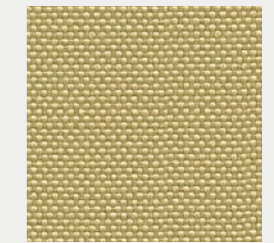
ABALONE
QUE18



DRIFTWOOD
QUE19



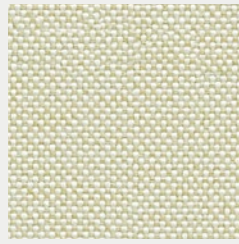
SANDSTONE
QUE20



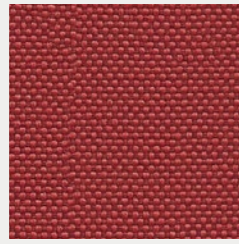
BEACH COMBER
QUE21

FABRIC & LEATHER

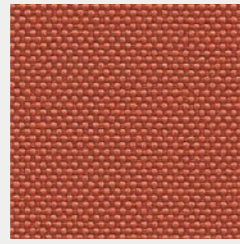
CAMIRA - QUEST



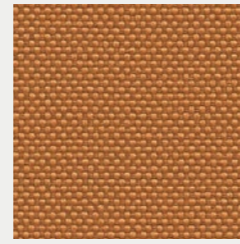
SALT
QUE22



COCKLE
QUE23



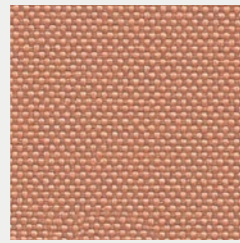
CRAB
QUE24



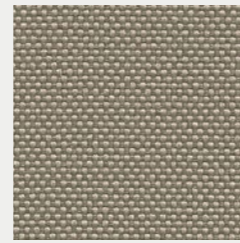
CLAY
QUE25



RIPPLE
QUE07



SHRIMP
QUE26

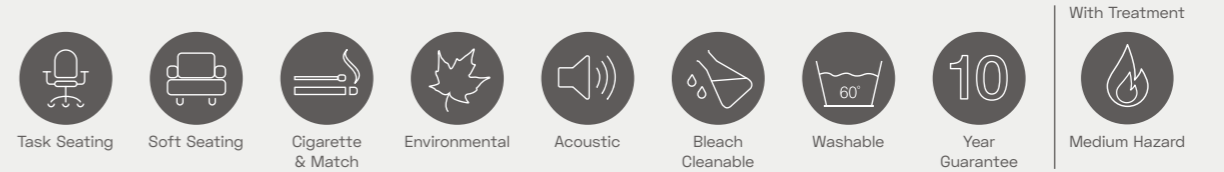


PEBBLE
QUE27

CAMIRA - QUEST

PRODUCT SPECIFICATIONS

Application	Task Seating / Soft Seating / Panel
Composition	100% post-consumer recycled polyester including 75% SEAQUAL® YARN
Environmental	Certified to the EU Ecolabel Certified to OEKO-TEX® Standard 100 Certified to Indoor Advantage™ Gold Made from 100% post-consumer recycled polyester Non metallic dyestuffs
Width	137 cm minimum
Weight	330 g/m2 ±5% (452g/lin.m ±5%)
Abrasion Resistance	Heavy duty / 10 year guarantee. Independently certified to ≥100,000 Martindale cycles
Flammability	EN 1021 - 1 (cigarette) EN 1021 - 2 (match) BS 7176 Low Hazard UNI 9175 Classe 1 IM BS 476 Part 7 Class 1Y (Adhered) EN 13501-1 Adhered Class B, s1, d0 EN 13501-1 Un-adhered Class B, s1, d0 Optional: Please specify when ordering BS 5852 Ignition Source 5 with EnviroFlam5 BS 7176 Medium Hazard with EnviroFlam5 IMO FTP Code (Part 8) with EnviroFlam5 Note: Flammability performance is dependent on components used. Our certificates show what substrates have been used in our tests. For composite tests customers must ensure their complete furniture meets the necessary standards.
Light Fastness	4-6 (ISO 105 - B02)
Fastness to Rubbing	Wet: 4, Dry: 4 (ISO 105 - X12)
Bleach Cleanable	ISO 105 E03 colour change 4 for dilution factor 1:4 chlorine solution
Acoustic	Acoustically transparent. Acoustic graphs available upon request
Cleaning	Vacuum regularly. Wipe with a damp cloth using a proprietary upholstery shampoo/ soap. For deeper cleaning use steam, bleach, alcohol or professionally dry clean. Can be washed at 60°C.
Guarantee	10 Years

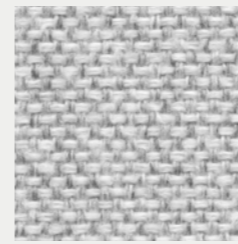


Milano

Combining the feeling of ease and peace with its carefully selected colours.

CLASS B

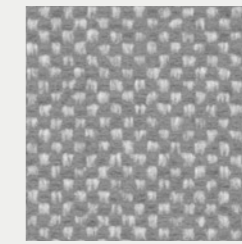
FIDIVI - MILANO



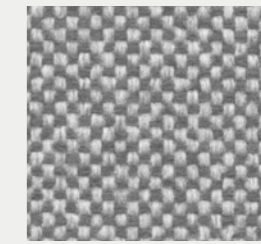
9000



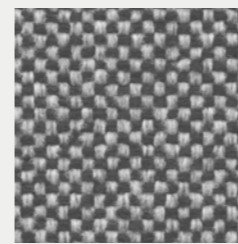
9801



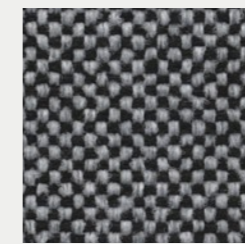
9878



9809



9817



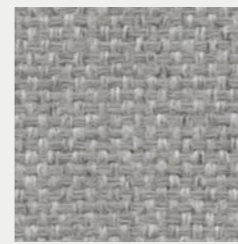
9833



9101



9108



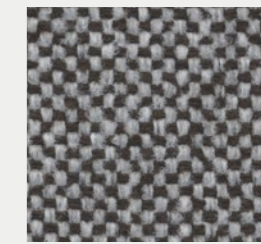
9106



9224



9212



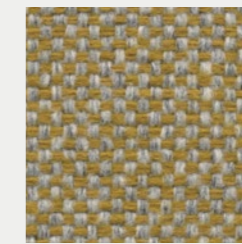
9210



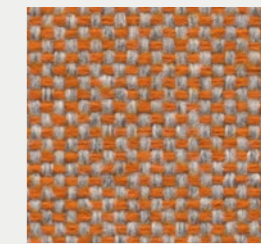
9390



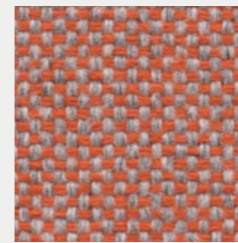
9319



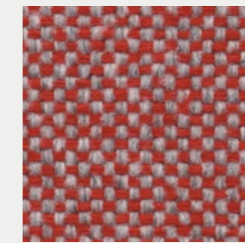
9330



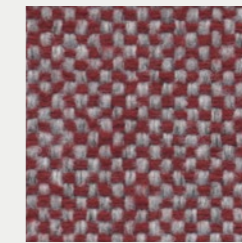
9430



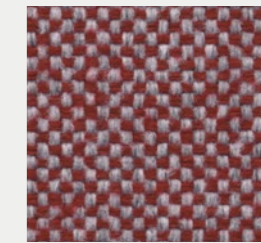
9451



9427



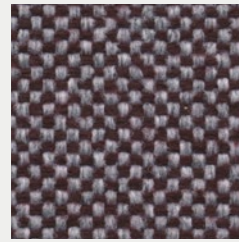
9494



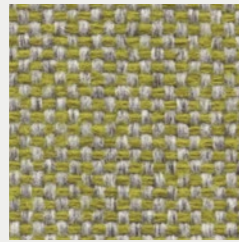
9418

FABRIC & LEATHER

FIDIVI - MILANO



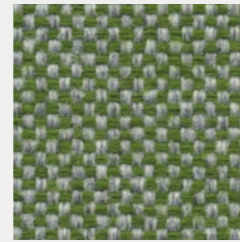
9407



9734



9709



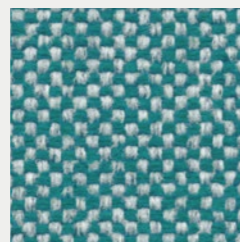
9725



9702



9607



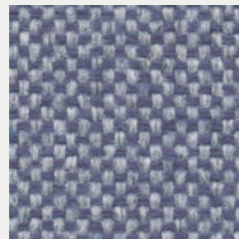
9691



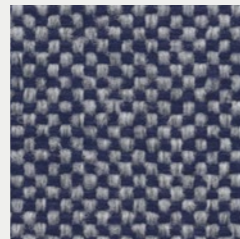
9614



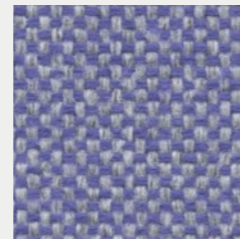
9656



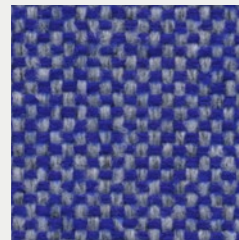
9613



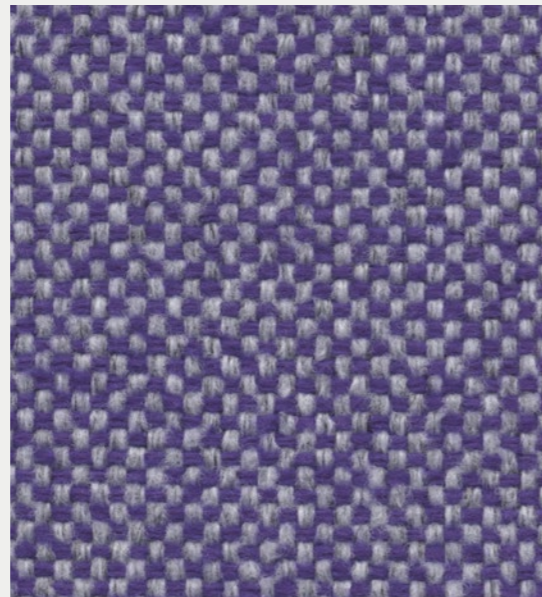
9698



9629



9695



9506

Colors may slightly vary due to photographic lighting sources or your monitor settings.

FIDIVI - MILANO

PRODUCT SPECIFICATIONS

Description	Full wool-like appearance and handtouch. 34 yarn dyed combinations	
Application	Office, Luggage, Contract	
Weight	525 ± 5 % g/ml 375 ± 5 % g/m ²	
Height	140 ± 2 % cm	
Composition	100% Polyester Trevira CS	
Abrasion Resistance	ISO 12947/2 80.000 ± 10 % Rubs	
Light Fastness	ISO 105-B02 6 (blue scale) Tolerance: from 5 to 8	
Fastness to Rubbing	ISO 105-X12 4/5 (grey scale) Tolerance: from 4 to 5	
Pilling (2000 rubs)	ISO 12945-2 5 Tolerance: from 4 to 5	
Acoustic Performances	ISO 354 (Reverberation Room), 0,65	
Fire Resistance	UNI 9174 Class C1 can meet UNI 9175 Class 1 IM can meet DIN 4102 Class B1 NF P 92 501-7 M1 NF D 60013 Class AM18 can meet EN 1021-1 & 2 BS 5852 Crib 5 BS 7176 Class Medium Hazard EN 13773 Class 1 can meet OENORM 3800-1 Class B1,Q1,TR1 can meet California TB 117:2013 can meet USA NFPA 701 can meet USA NFPA 260 can meet IMO Part 8 Upholstery	Will also pass other flammability standards. Flame retardant performance is dependent upon the foam used.
Stain Repellent Treatment	Trademark Trevira B1 certificate MOQ 250m	
Certifications	Oekotex Euflower - Ecolabel	
Warranty	5 Years	
Cleaning and Washing		



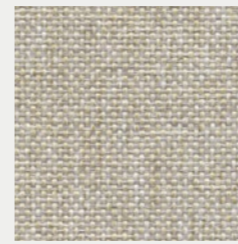
Colors may slightly vary due to photographic lighting sources or your monitor settings.

Roccia

The world's favorite thanks to its perfect harmony of elegance and diversity.

CLASS B

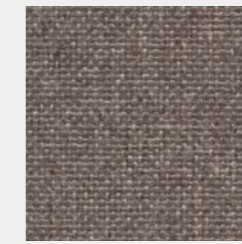
FIDIVI - ROCCIA



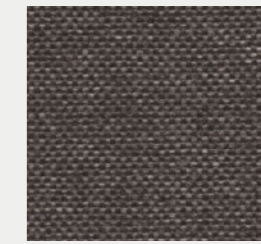
1502



1503



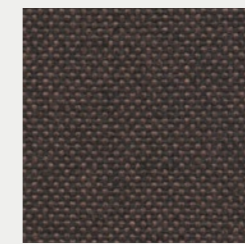
1504



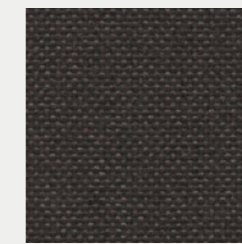
2501



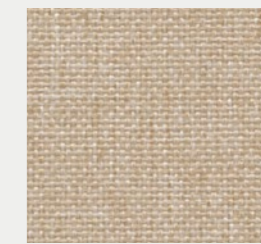
2503



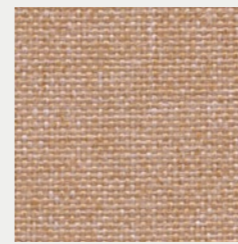
2504



2505



1501



3505



3506



3504



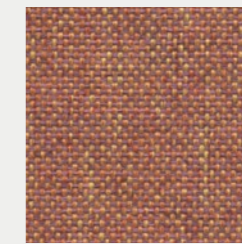
3502



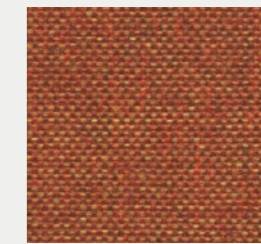
3501



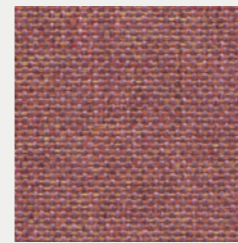
2502



5504



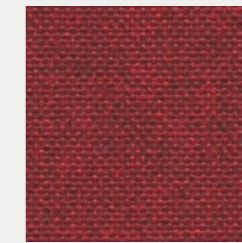
4501



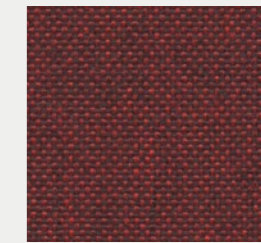
5505



4505



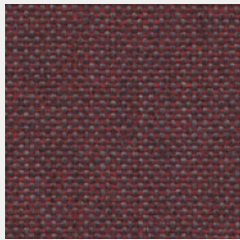
4504



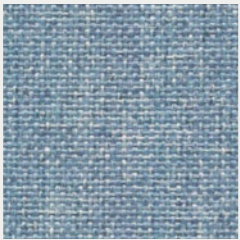
4503

FABRIC & LEATHER

FIDIVI - ROCCIA



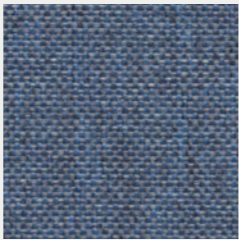
4502



6501



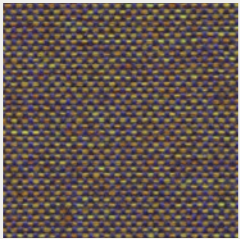
6502



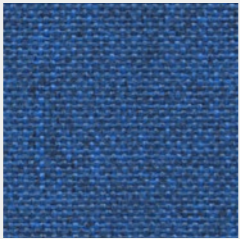
6503



6504



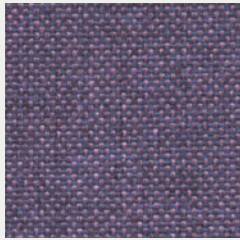
6508



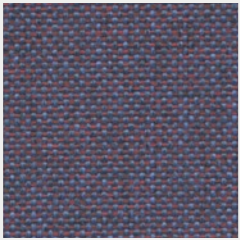
6505



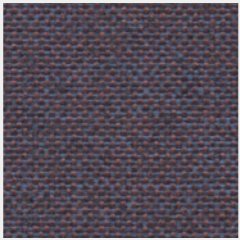
5503



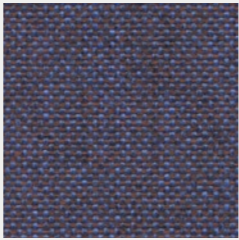
5502



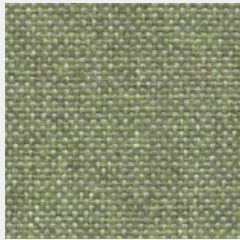
5501



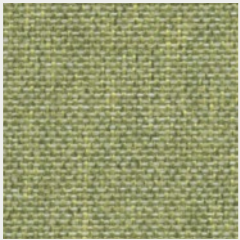
6507



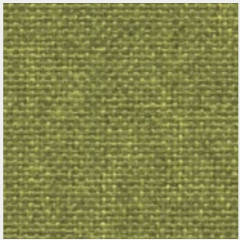
6506



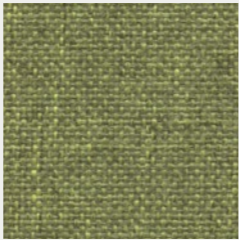
7504



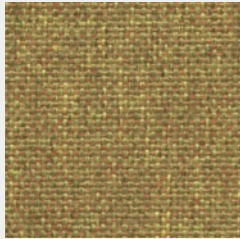
7503



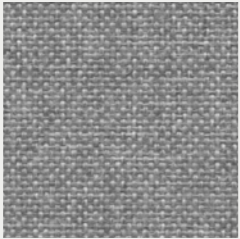
7502



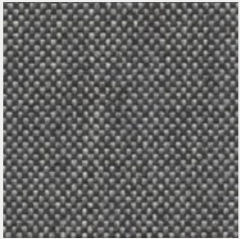
7501



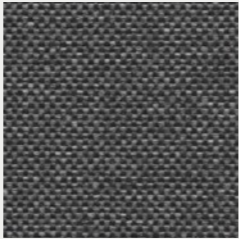
3508



8501

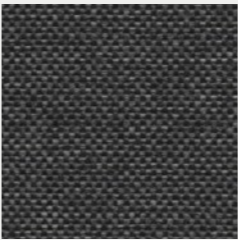


8502



8030

FIDIVI - ROCCIA



8504



3503

FABRIC & LEATHER

FIDIVI - ROCCIA

PRODUCT SPECIFICATIONS

Description	Yarn dyed 2 color melange fabric. Wool handtouch in 42 natural colorways.	
Application	Office, Contract	
Weight	350 ± 5 % g/ml 250 ± 5 % g/m ²	
Height	140 ± 2 % cm	
Composition	100% Polyester Trade Mark Trevira CS	
Abrasion Resistance	ISO 12947/2 70.000 ± 10 % Rubs	
Light Fastness	ISO 105-B02 6 (blue scale) Tolerance: from 5 to 8	
Fastness to Rubbing	ISO 105-X12 4/5 (grey scale) Tolerance: from 4 to 5	
Pilling (2000 rubs)	ISO 12945-2 5 Tolerance: from 4 to 5	
Acoustic Performances	ISO 354 (Reverberation Room), 0,6	
Fire Resistance	UNI 9174 Class C1 UNI 9175 Class 1 IM DIN 4102 Class B1 NF P 92 501-7 M1 NF D 60013 Class AM18 EN 1021-1 & 2 BS 5852 CRIB 5 BS 7176 Class Medium Hazard EN 13773 Class 1 can meet OENORM 3800-1 Class B1,Q1,TR1 California TB117 USA NFPA 701 can meet USA NFPA 260 can meet IMO Part 8 Upholstery	Will also pass other flammability standards. Flame retardant performance is dependent upon the foam used.
Certifications	Oekotex Euflower - Ecolabel	
Warranty	5 Years	
Cleaning and Washing		

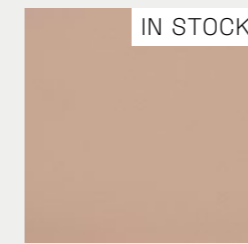


Valencia

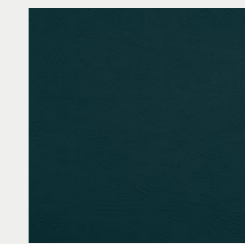
An unique and attractive aesthetic with the combination of vibrant colors.

CLASS B

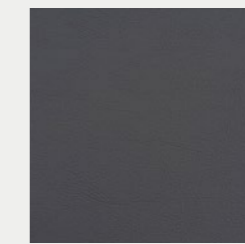
SPRADLING - VALENCIA



LOTUS
107-2113



TEAL
107-2119



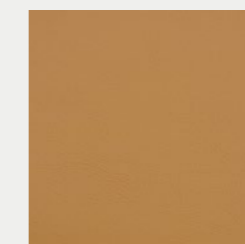
PETROL
107-5065



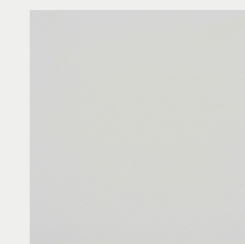
WARM GREY
107-4044



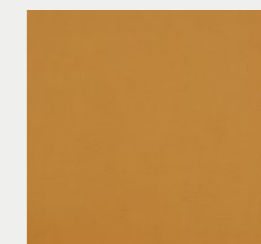
ULTRA VIOLET
107-2118



CASHMERE
107-2117



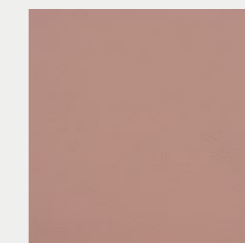
PURE WHITE
107-9607



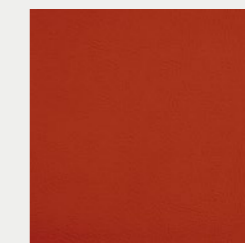
CAMEL
107-2116



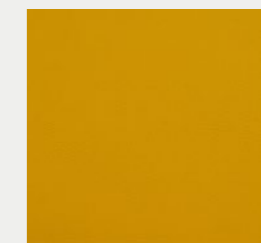
CHESTNUT
107-2115



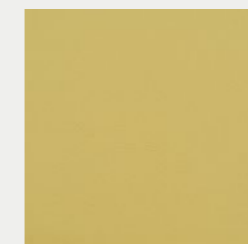
ROSÉ
107-2114



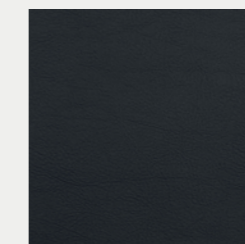
TOMATO
107-2112



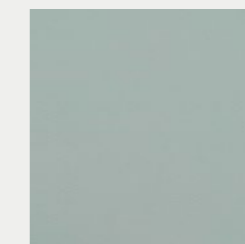
SQUASH
107-2111



CITRUS
107-2109



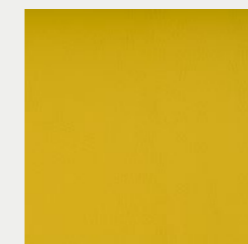
NIGHT
107-2108



SKYLIGHT
107-2107



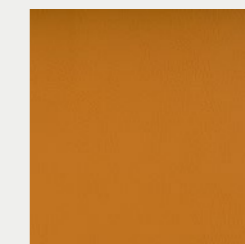
CORAL
107-2106



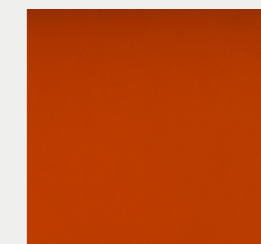
SONNE
107-2020



SAFRAN
107-6012

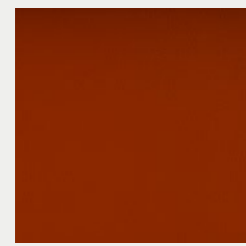


MELONE
107-6013



ORANGE
107-6019

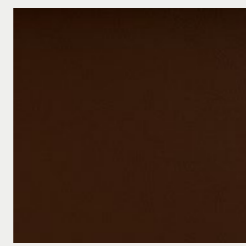
SPRADLING - VALENCIA



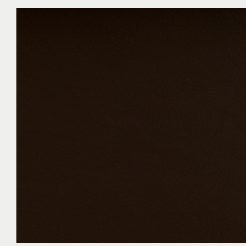
NECTARINE
107-6003



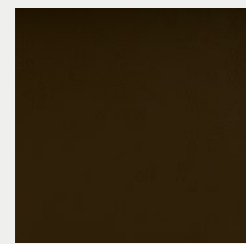
TERRACOTTA
107-0035



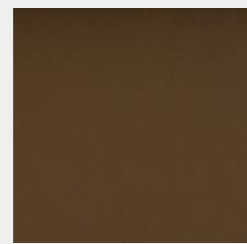
BUCHE
107-0033



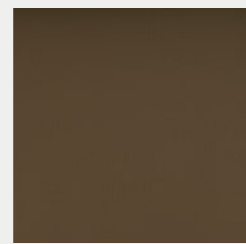
PRALINÉ
107-0001



BRONZE
107-6002



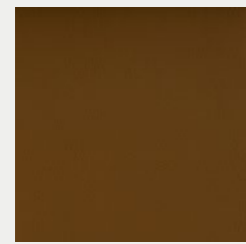
SUMATRA
107-9001



MUSHROOM
107-4001



TAUPE
107-0034



COGNAC
107-0002



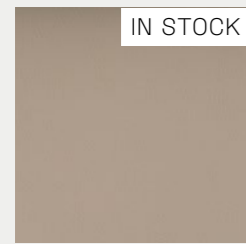
CHAMPAGNE
107-1001



BEIGE
107-1050



LEINEN
107-1049



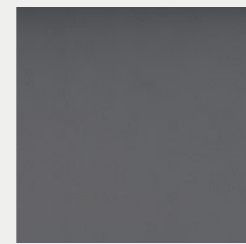
SISAL
107-1048



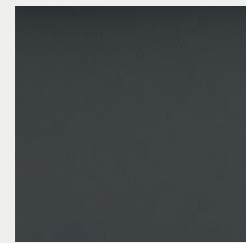
WEISS
107-8032



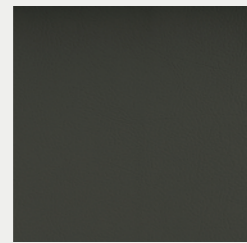
AUSTER
107-4040



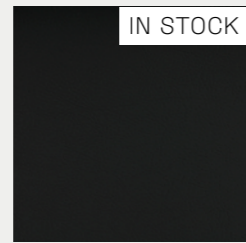
PERLE
107-4045



PLATIN
107-4043



LICHTGRAU
107-4052



GRAPHITE
107-4003

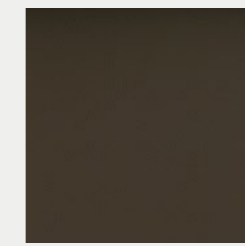


SCHWARZ
107-9035

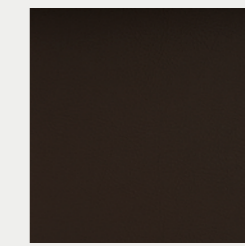
SPRADLING - VALENCIA



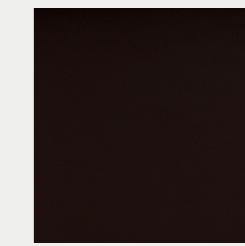
LAUREL
107-4002



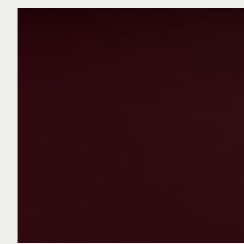
MOSS
107-5002



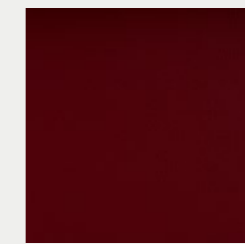
METEOR
107-4041



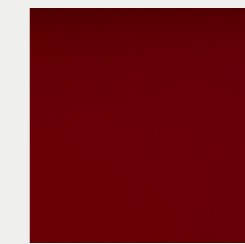
MOCCA
107-0020



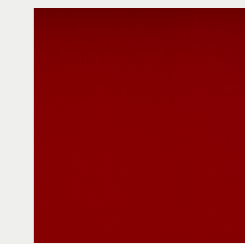
MERLOT
107-2001



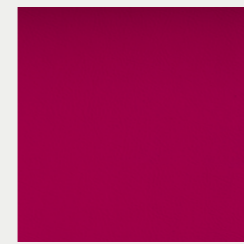
PORT
107-2062



KIRSCH
107-2074



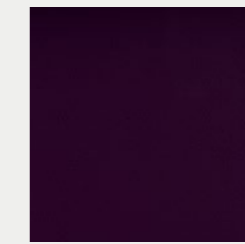
ROT
107-2075



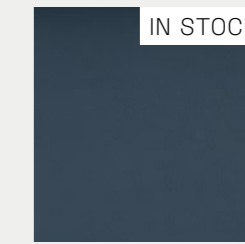
PINK
107-2021



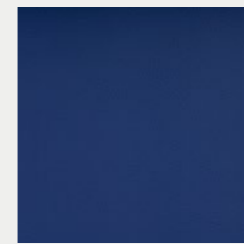
BERRY
107-2002



AMETHYST
107-7001



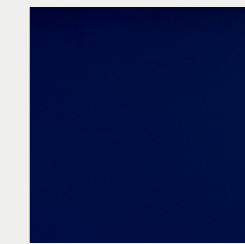
TITAN
107-4042



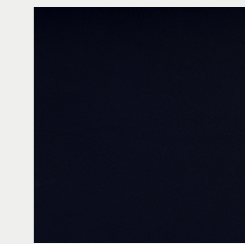
LAVENDEL
107-3001



BALTIC
107-3069



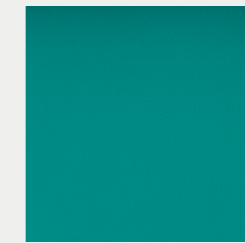
DELFT
107-3067



MARINE
107-3068



TÜRKIS
107-5057



JADE
107-5056



APFEL
107-5041



OLIVE
107-5001

FABRIC & LEATHER

SPRADLING - VALENCIA



GRUN
107-5069



SILVER
107-4020



GOLD
107-6020



IVORY
107-1020



PEARLESSENCE
107-8020



AVOCADO
107-2110

SPRADLING - VALENCIA

PRODUCT SPECIFICATIONS

Composition:	Topcoat :Vinyl Backing; 100% Polyester Hi-Loft2™
Weight:	650 gr/m2
Width:	min. 137 cm
Roll size:	+/- 30m
Abrasion:	>300.000 cycles (MARTINDALE)
Flame retardancy*:	EN 1021 Part 1 & 2 DIN 4102 B2 MED ECE R 1 18.02 Anx. 6,7 & 8 IMO 2010 FTP Part 8 UNI 9175 Classe I.IM UNE 23.727-90 IR/M.2 NF P 92-503 / M2 EN 71-2:2006+ A1:2007 FMVSS 302
Cold Crack:	-23°C
UV-Resistance:	1000 hours: ≥ 6 Blue wool scale
	*This term and any corresponding data refer to the typical performance in the specific tests indicated and should not be construed to imply the behavior of this or any other material under actual fire conditions.
FINISHES AND TREATMENTS PERMABLOK3®	
	Except Valencia Pure White 107-9607 that has PERMABLOK3® Plus
Virucidal Activity	ISO 18184:2019: Coated Fabrics treated with PERMABLOK3® are proven to reduce the presence of Coronavirus** by more than 90% within one hour of contact. ISO 21702:2019: All the Coated fabrics treated with PERMABLOK3® are capable of reducing the Coronavirus** activity by 99,9% within 24 hours of exposure on the surface. ISO 22196:2011. Value of antibacterial*** activity R>2.
Bacteriostatic Properties:	** Testing was conducted with material exposed to Feline Coronavirus (same coronavirusidae family, structures and mechanisms similar to SARS-Cov2) *** Testing was conducted with material exposed to Staphylococcus aureus, Staphylococcus aureus (MRSA), Escherichia coli and Klebsiella pneumoniae.
WARRANTY	5 Years. Terms and conditions apply, Warranty conditions are displayed on our website.
CARE AND CLEANING	<ul style="list-style-type: none"> The vinyl should be cleaned periodically in order to maintain its appearance and prevent build-up of dirt and contaminants. Any stain, spills, or soiling should be cleaned up promptly to prevent the possibility of permanent staining. Vinyl fabrics treated with PERMABLOK3® require a minimum of maintenance to retain their good looks. Use soft soapy solutions or special cleaning products for vinyl fabrics to remove stains on the surface of the material. Remove only with a damp white cloth. Lacquers, strong cleaners, detergents, xylene-based solutions, acetone, or MEK cause immediate damage and contribute to the deterioration of the material. The use of such cleaners is at the owner's risk.

Certain clothing and accessory dyes (such as those used on denim jeans) may migrate to lighter colors. This phenomenon is increased by humidity and temperature and is irreversible. SPRADLING International GmbH, SPRADLING UK Ltd, and EURO SPRADLING S.L.U will not assume responsibility for dye transfer caused by external contaminants and possible permanent staining caused by this phenomenon.

PERMABLOK3® is a registered trademark of Spradling Holdings, Inc.® | Hi-Loft2™ and VALENCIA™ are trademarks of Spradling Holdings, Inc.®

Angola

A bold mixture of core and effect yarns to bring the perception of bouclé to a new high.

CLASS B

B&T

ANGOLA



X1010



TN7N7



8290



TB1J5



8957



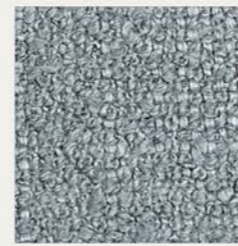
8989



C4C4



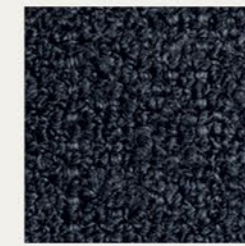
BMBM



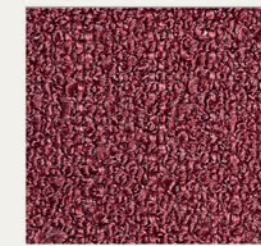
T3636



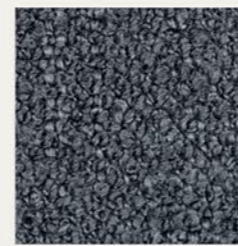
GAGA



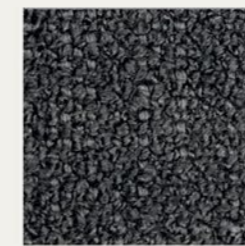
C1C1



5959



U3U3



D8D8

ANGOLA



XE6G3



Colors may slightly vary due to photographic lighting sources or your monitor settings.

400

ANGOLA

PRODUCT SPECIFICATIONS

Technical Informations	Unit	Value	Test Method	Result
Composition		%3 cv, %68 pan, 29%pes		
Weight	gr/m ²	580 ±%5		
Width	cm	140 ±2		
Resistance to Abrasion	martindale wyzenbeek	50.000 100.000	ISO 12947-2 ASTM D4157	
Pilling	2000 cycle	4/5	EN ISO 12945-2	
Brush Pilling		3/4	D3511-99A	
Colour Fastness to Rubbing	dry wet	4/5 4/5	ISO 105-X12	
Tear Strength	warp weft	193 109	ISO 13937-3	
Tensile Strength	warp weft	2565 905	ISO 13934-1	
Elongation	horizontal vertical	15% 41%	ISO 13934-1	
Seam Slippage	warp weft	2 2,5	ISO 13936-2	
Cigarette Test	BS 5852 PART 1 SOURCE 0 / EN 1021-1 / CALL 117 / NFPA 260			Pass
Bleach Cleanable Test	AATCC 101-ACT TM1 With Extra Process			Pass

Our products fulfil the requirements of Annex XVII of REACH (incl. the use of azo-dyes, heavy metals, etc.) as well as the American requirement regarding total content of lead in children's articles]. In stain repellent products, we always use human and environmental friendly C6 fluorocarbons. In FR treatment, we always use DecaBDE free FR compounds. The colours in production might slightly vary from this reference due to different lots in production.

- Wash 30°C gentle cycle.
- Low iron at max 110°C.
- Do not tumble dry.
- Do not bleach.
- Dry-cleaning in perchloroethylene gentle cycle.
- Vacuum regularly. Using soap and water, wipe with a damp cloth or use a special upholstery shampoo. For deeper cleaning, use steam, bleach, alcohol or professional dry clean.

401

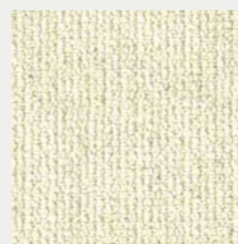
Colors may slightly vary due to photographic lighting sources or your monitor settings.

Loop

A modern touch on traditional design elements. First sight impression, combined with a colourful yarn blend when looking more closely.

CLASS B

LOOP



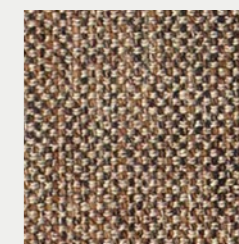
02



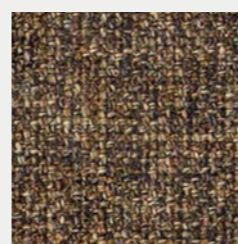
04



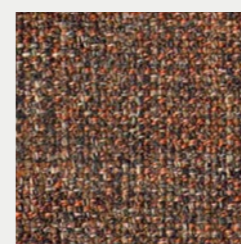
19



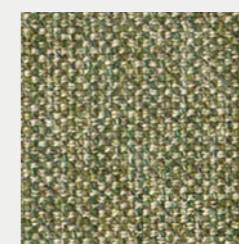
23



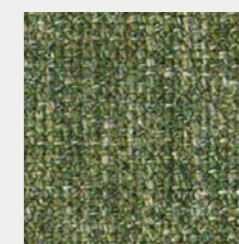
24



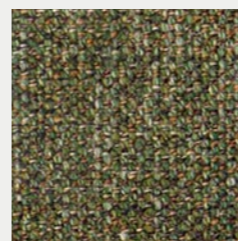
28



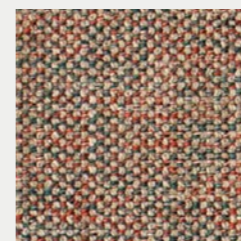
29



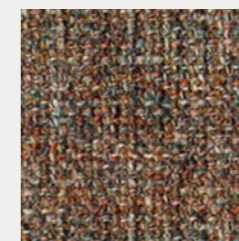
31



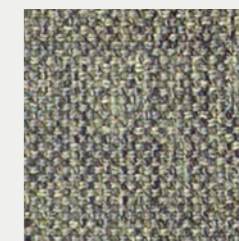
30



21



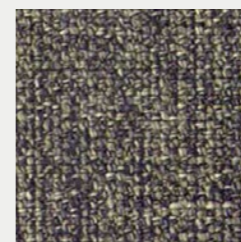
27



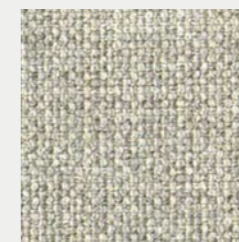
40



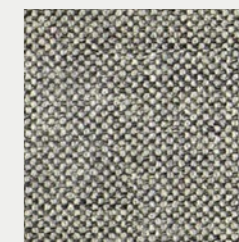
41



44



08



18



48

403

Colors may slightly vary due to photographic lighting sources or your monitor settings.

LOOP



39

LOOP

PRODUCT SPECIFICATIONS

Technical Informations	Unit	Value	Test Method
Weight	gr/m ²	509 (± %5)	BS EN ISO 12127:1998
Thickness	mm	1,4	
Width	cm	140 (± %5)	
Roll Meter	mt	50 (± %5)	
Resistance to Abrasion		40.000	EN ISO 12947-2
Seam Slippage	mm	Weft 3-4 / Warp 3-4	ISO 13936-2
Pilling	2000 cycle	5	ISO 12945-2
Colour Fastness to Light		5	TS EN ISO 105-B2
Composition		%28 ACR %56 COT %4 LIN %12 PES	



Product Characteristics

- Only valid for Loop colour codes.
- It can be cleaned with neutral cleaning materials. Chemical solvents should not be used.
- The detergent must not include oxide bleach and bleach.
- There may be colour and tone differences between different lots, arising from the nature of the production and within conventionally accepted limits.
- The product should not be exposed to direct sunlight.
- The cutting should be done after the approval of the colour, tone and defect controls by the related parties. In this context, taking into account that, although exceptional, there may be tonal differences of products that arrive in pieces, they should be checked with the delivery of the product before cutting. Making upholstery without above mentioned examination may cause not getting the desired result.
- While cutting or upholstery, the products should never be left folded, nor should they be left under-weight that may cause forming lines on them.
- The tape should never be used on the product surface. This matter, which our company pays attention to, should not be overlooked after the product has been checked or if it is wrapped for a second time during use. When the leftover product should be rolled, please pay attention not to fold it tightly.
- All kinds of leather and velvet should not come into direct contact with the sponge. Sponge should be covered with interlining or cotton lining.
- Stains, such as oil, chocolate, chewed gum should never be cleaned with liquid (water, thinner, acetone and other solvents).
- Dry cleaning methods are also recommended for such stains.
- Vacuum cleaner can be used on daily and weekly basis.
- Please get a confirmation about stocks.
- The using place and purpose of the product should be conventionally accepted places and purposes.
- No liability can be accepted for products that are not used properly.
- The information stated above is of reliable common values. Please ask for special values of the contract.

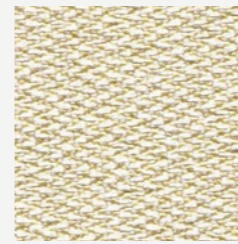
Era

A subtle, two tone polyester fabric containing stretch in both directions for ease of upholstery.

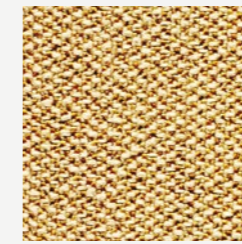
CLASS A



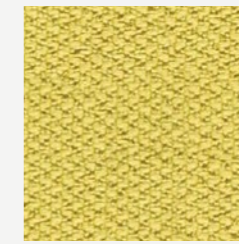
CAMIRA - ERA



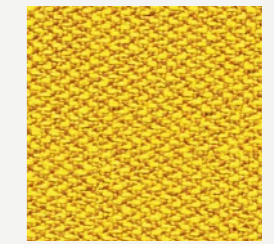
TRANSITION
CSE30



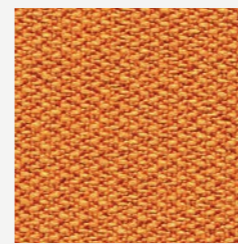
SPLITSECOND
CSE31



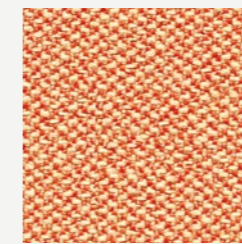
LIFETIME
CSE03



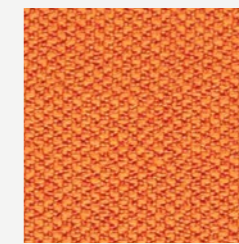
OCCASION
CSE32



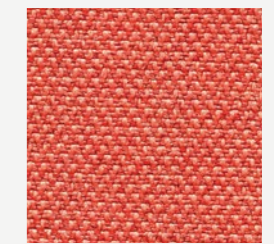
MEASURE
CSE27



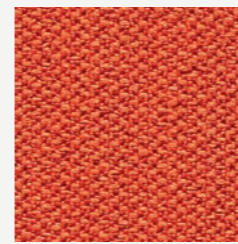
SEQUENCE
CSE25



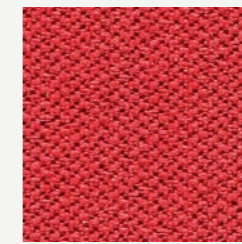
SPAN
CSE05



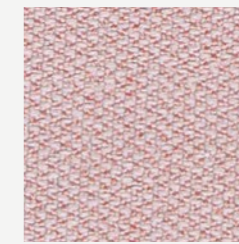
TURN
CSE26



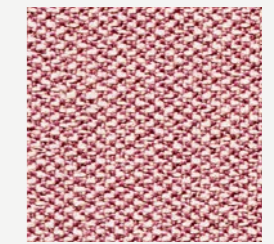
EXPERIENCE
CSE29



EXTENT
CSE28



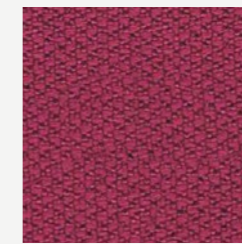
CALENDAR
CSE19



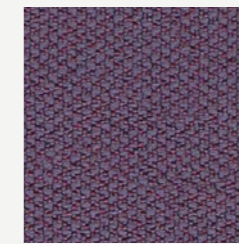
DATE
CSE24



CYCLE
CSE06



PHASE
CSE17



PRIME
CSE09



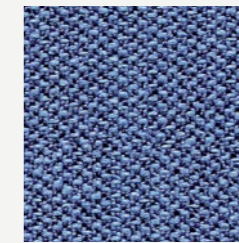
ALLOWANCE
CSE38



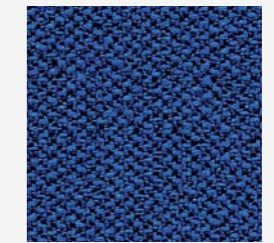
CHAPTER
CSE08



PERENNIAL
CSE12

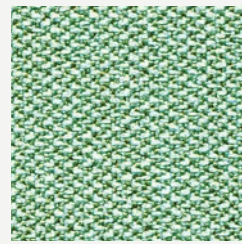


RANGE
CSE42

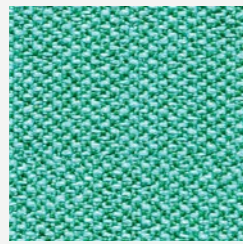


MATURITY
CSE40

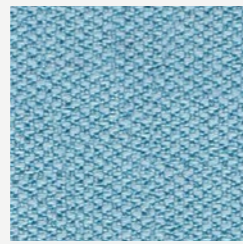
CAMIRA - ERA



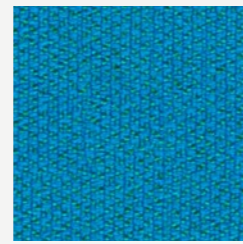
NOTATION
CSE36



REST
CSE37



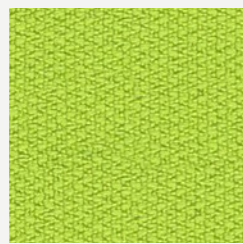
AEON
CSE20



EVERLASTING
CSE10



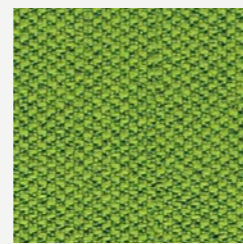
STAGE
CSE15



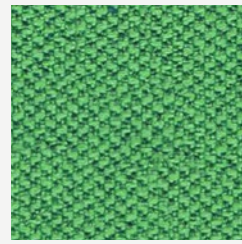
PERIOD
CSE07



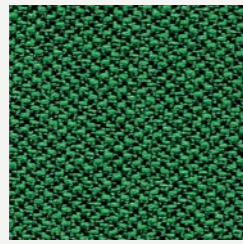
ENDURANCE
CSE34



TIMELAPSE
CSE16



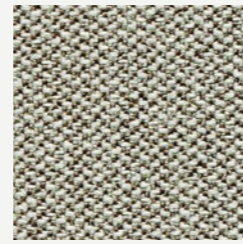
EVENT
CSE18



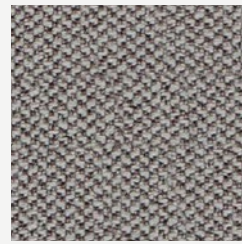
SIGNATURE
CSE35



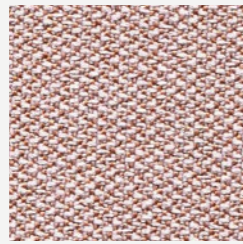
ANALOGUE
CSE33



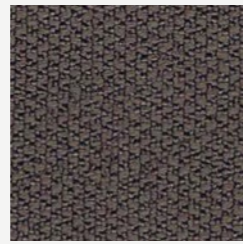
PROMPT
CSE45



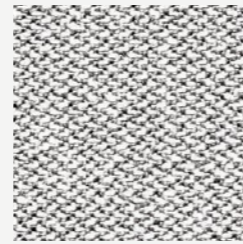
GENERATION
CSE02



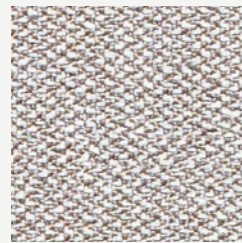
OCCURENCE
CSE23



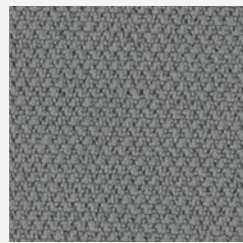
HISTORY
CSE21



MEMO
CSE46



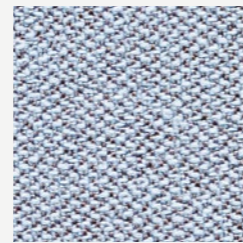
QUOTA
CSE41



FORECAST
CSE11

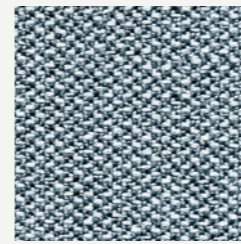


PRESENT
CSE13

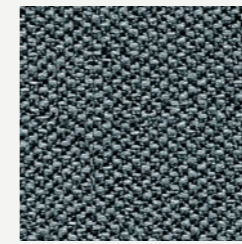


YOUTH
CSE39

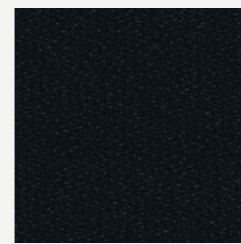
CAMIRA - ERA



LATE
CSE43



ELAPSE
CSE44



FORWARD
CSE14



FUTURIST
CSE01

PRODUCT SPECIFICATIONS

Application	Task Seating / Soft Seating
Composition	100% Polyester
Environmental	Certified to OEKO-TEX® Standard 100 Certified to Indoor Advantage™ "Gold" Non metallic dyestuffs
Width	140 cm minimum
Weight	320 g/m2 ±5%
Abrasion Resistance	Heavy duty / 10 year guarantee. Independently certified to ≥100,000 Martindale cycles
Flammability	EN 1021 - 1&2 (cigarette & match), BS 7176 Low Hazard EN 13501-1 Adhered Class B, s1, d0, EN 13501-1 Un-adhered Class C, s1, d0 BS 7176 Medium Hazard with EnviroFlam5
Light Fastness	5 (ISO 105 - B02)
Fastness to Rubbing	Wet: 4, Dry: 4 (ISO 105 - X12)
Bleach cleanable	ISO 105 E03 colour change 4 for dilution factor 1:4 chlorine solution.
Guarantee	10 Years

Cleaning
Vacuum regularly. Wipe with a damp cloth using soap and water or use proprietary upholstery shampoo.
For deeper cleaning use steam, bleach, alcohol or professionally dry clean. Can be washed at 60°C.

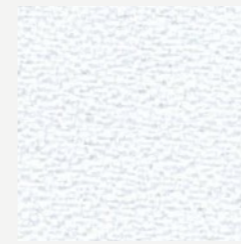
Xtreme

A modern crepe weave fabric made from 100% post-consumer recycled polyester.

CLASS A



CAMIRA - XTREME



ADOBO
YS165



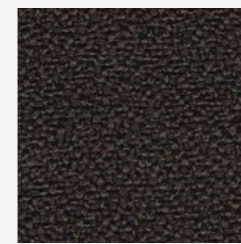
ARUBA
YS108



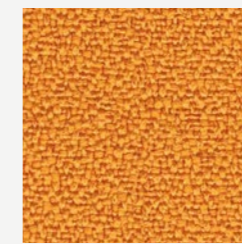
SANDSTORM
YS071



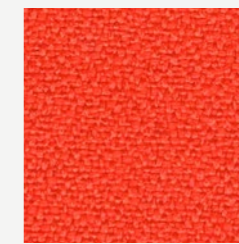
NOUGAT
YS091



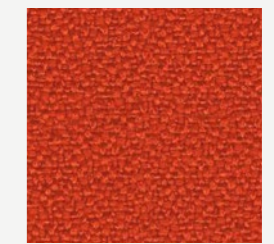
SOMBRERO
YS046



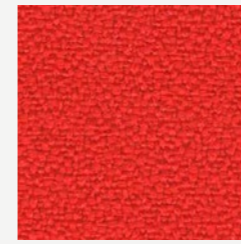
SOLANO
YS072



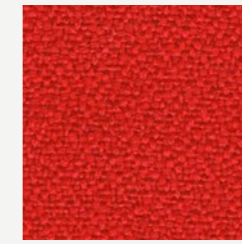
TORTUGA
YS168



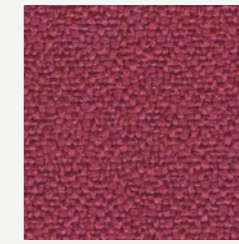
LOBSTER
YS076



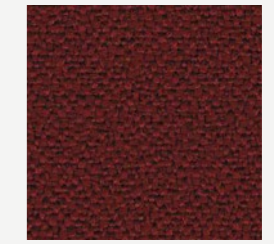
BELIZE
YS105



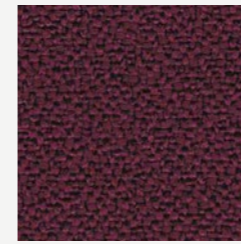
PANAMA
YS079



DIABLO
YS101



TOKARA
YS136



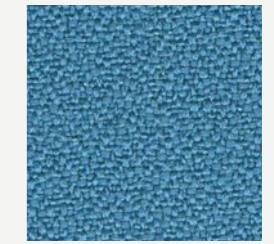
TOBAGO
YS030



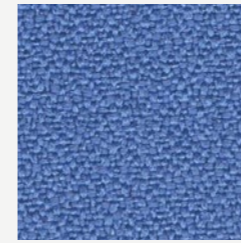
BRIDGETOWN
YS102



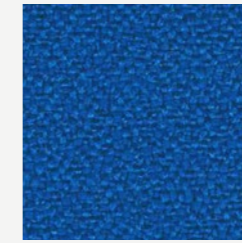
TAROT
YS084



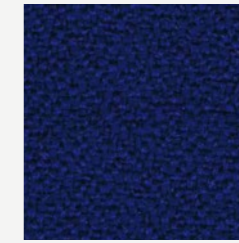
PARASOL
YS073



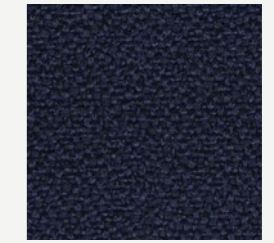
BLUEBELL
YS097



HONEYMOON
YS035

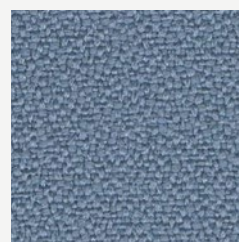


OCEAN
YS100



CAYMAN
YS024

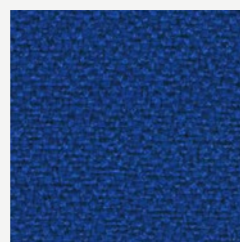
CAMIRA - XTREME



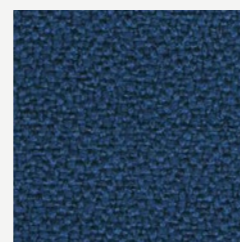
STEEL
YS095



MARTINIQUE
YS004



SCUBA
YS082



CURACAO
YS005



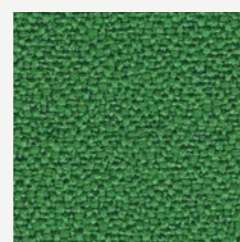
COSTA
YS026



APPLE
YS096



MADURA
YS156



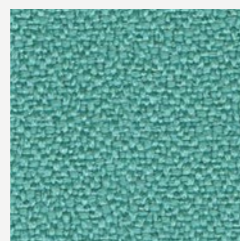
LOMBOK
YS159



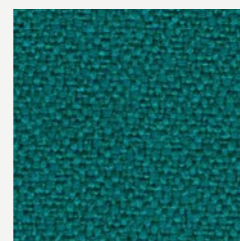
APPLEDORE
YS077



TABOO
YS045



CAMPECHE
YS074



TONGA
YS160



WINDJAMMER
YS047



KRABI
YS141



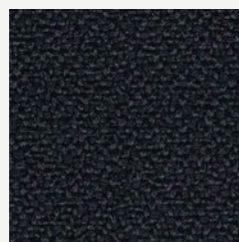
BLIZZARD
YS081



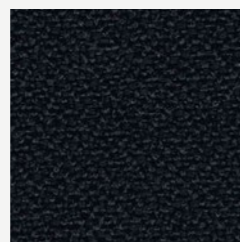
RUM
YS173



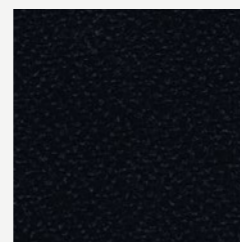
OSUMI
YS171



BONAIRE
YS172

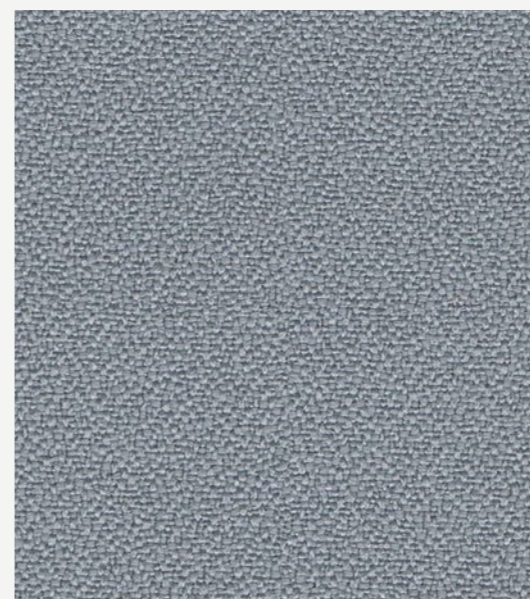


PADANG
YS145



HAVANA
YS009

CAMIRA - XTREME



SLIP
YS094



PRODUCT SPECIFICATIONS

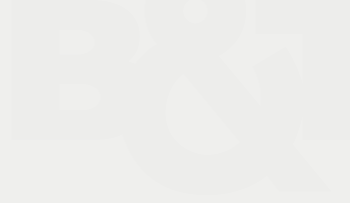
Application	Task Seating
Composition	100% post-consumer recycled polyester
Environmental	Certified to the EU Ecolabel, Certified to OEKO-TEX® Standard 100, Certified to Indoor Advantage™ "Gold" Made from 100% recycled polyester Non metallic dyestuffs
Width	140 cm minimum
Weight	310 g/m2 ±5%
Abrasion Resistance	Heavy duty / 10 year guarantee. Independently certified to ≥100,000 Martindale cycle
Flammability	EN 1021 - 1&2 (cigarette & match), BS 7176 Low Hazard, BS 5852 Ignition Source 5, BS 7176 Medium Hazard, DIN 4102 B1, NF D 60-013 ,ÖNORM B 3825 & A 3800-1 (over 58 kg/m3 CMHR foam), UNI 9175 Classe 1 IM, BS 476 Part 7 Class 1
Light Fastness	6 (ISO 105 - B02)
Fastness to Rubbing	Wet: 4, Dry: 4 (ISO 105 - X12)
Bleach cleanable	ISO 105 E03 colour change 4 for dilution factor 1:4 chlorine solution.
Guarantee	10 Years

Cleaning
Vacuum regularly. Wipe with a damp cloth using soap and water or use proprietary upholstery shampoo. For deeper cleaning use steam, bleach, alcohol or professionally dry clean. Can be washed at 60°C.

Time

The timeless beauty of charming colours and fresh feelings.

CLASS A



FIDIVI - TIME



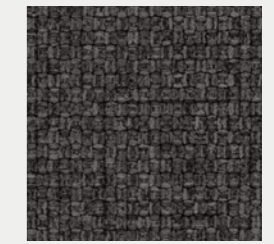
8048



8004



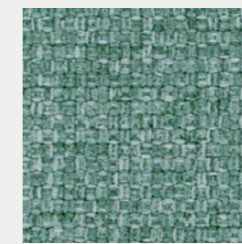
8006



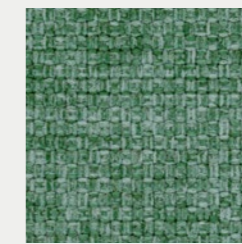
8007



7026



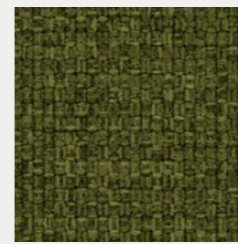
7023



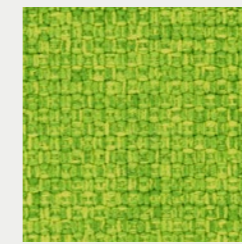
7008



7019



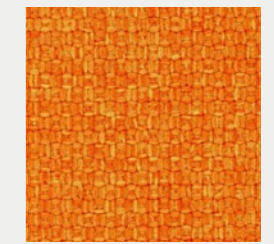
7036



7011



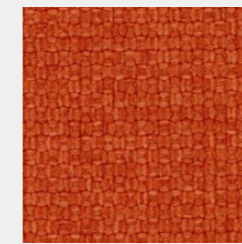
3090



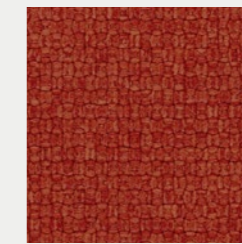
3094



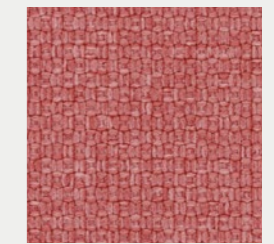
3012



3082



4066



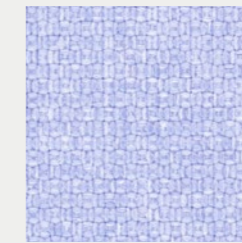
4022



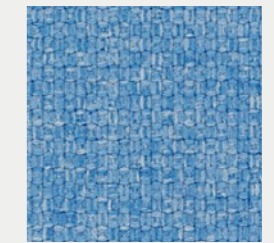
4079



4021



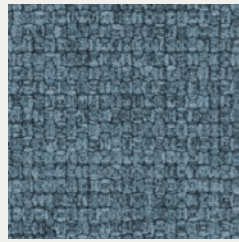
6001



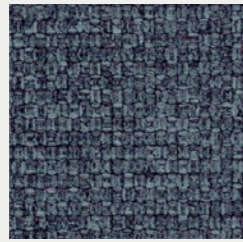
6070

FABRIC & LEATHER

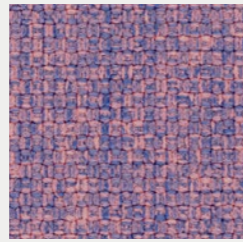
FIDIVI - TIME



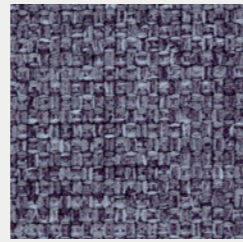
6031



6034



6018



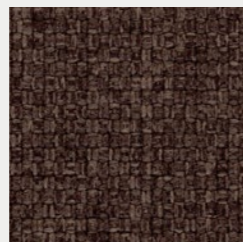
6026



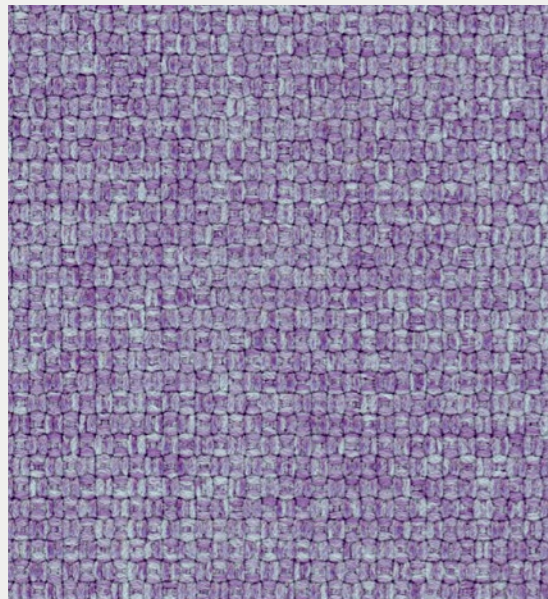
1010



1020



2005



6091

FIDIVI - TIME

PRODUCT SPECIFICATIONS

Description	Recycled polyester melange fabric. Piece dyed in 28 colorshades.	
Application	Office, Furniture, Contract	
Weight	490 ± 5 % g/ml 350 ± 5 % g/m ²	
Height	140 ± 2% cm	
Composition	100% Polyester - Recycled GRS	
Abrasion Resistance	ISO 12947/2 100.000 ± 10% Rubs	
Light Fastness	ISO 105-B02 6 (blue scale) Tolerance: from 5 to 8	
Fastness to Rubbing	ISO 105-X12 4/5 (grey scale) Tolerance: from 5 to 8	
Pilling (2000 rubs)	ISO 12945-2 5 Tolerance: from 5 to 8	
Fire Resistance	UNI 9175 Class 1 IM EN 1021-1 & 2 BS 5852 CRIB 5 part 2 BS 7176 Class Medium Hazard California TB 117-2013	Will also pass other flammability standards. Flame retardant performance is dependent upon the foam used.
Certifications	Oekotex GRS	
Warranty	5 Years	
Cleaning and Washing		



Athena

A mix of polyester and cotton, suitable for upholstery with prestigious colours and soft touch.

CLASS A



ATHENA



1152



1153



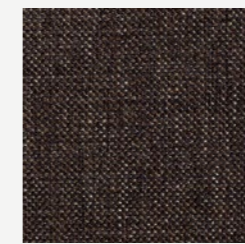
1155



1162



1173



1228



1144



1229



1192



1206



1199



1187



1132



1224



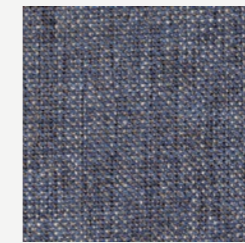
1179



1500



1188



1190

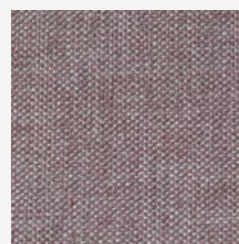


1225



1156

ATHENA



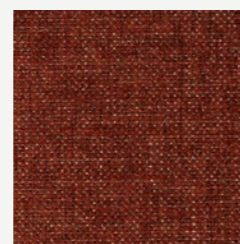
1233



1226



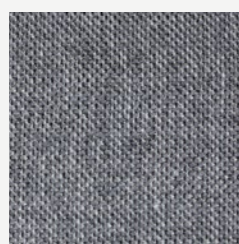
1203



1204



1170



1171



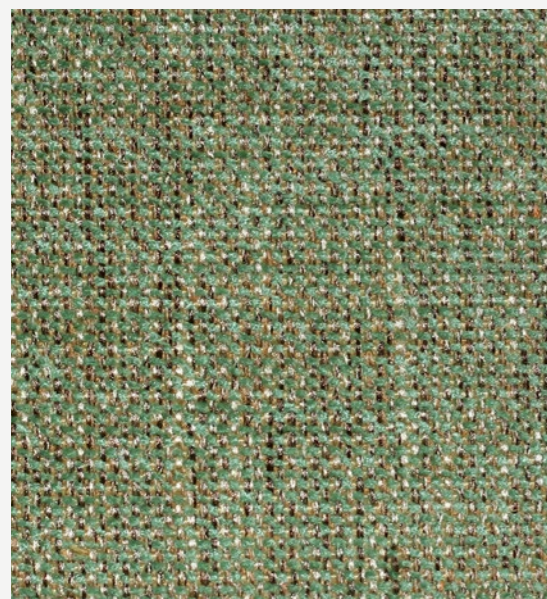
1141



1175



1140



1198



420

ATHENA

PRODUCT SPECIFICATIONS

Technical Informations	Unit	Value	Test Method
Composition	60% polyester, 40% cotton		
Weight	gr/m ²	440 ±20	ISO 2286-2
Width	cm	140 ±2	
Resistance to Abrasion	cycles	>40.000	ISO 12947-1
Colour Fastness to Light	bw	4/5	ISO 105-B02
Colour Fastness to Rubbing	wet dry	>5 >5	ISO 105-X12
Roll Length	m	50 ±10	

Liquid Stains

Blot the liquid stain gently with a high-absorbent material. Pat dry the area gently with a dry material to remove the remaining humidity (cotton cloth, paper towel, etc...). If the stain from the spill remains, remove the stain with a soapy cloth without diffusing the stain. After each rubbing motion, refresh the clean soapy cloth in order to prevent soiling.

Solid Particles

Remove the excess soiling with ultimate care without diffusing. Remove the solid particle from the fabric surface with the help of a soft spatula. To remove dust, use a vacuum cleaner or a soft brush. The remaining stains should be removed by rubbing with a soapy cloth in circular motion.

Ball-Point Pen and Similar Difficult Stains

Dampen a clean cotton cloth in a white soap solution. Rub the stain off gently. Clean the surface with the damp cloth and leave the fabric for drying.

Alcohol Derives

Petroleum and alkali based solvents should not be used for cleaning. After all cleaning processes, the drying should be done with a low temperature blow dryer in large circular motion or the fabric should be left for natural drying. After drying, misoriented and damaged piles should be fixed with a soft brush.

Valid for all colors. Red colors may have less color fastness to rubbing.

Canyon

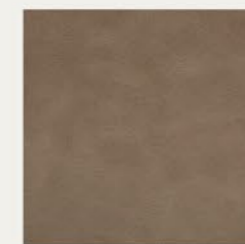
High abrasion resistant
and flame retardant
high-quality easy to
clean artificial leather
with a genuine leather
look.

CLASS A

CANYON



21745



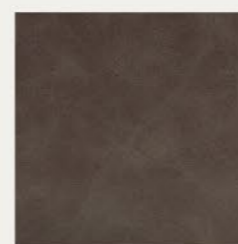
22658



22661



21747



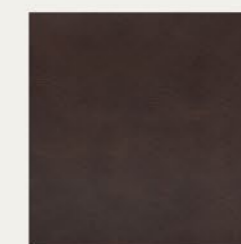
22662



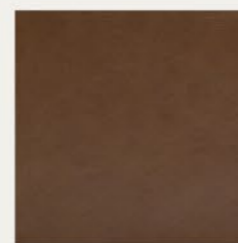
22663



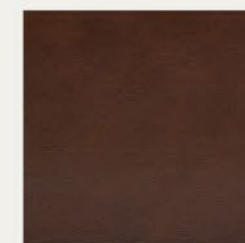
21748



21753



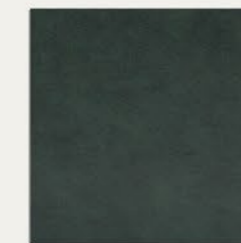
21749



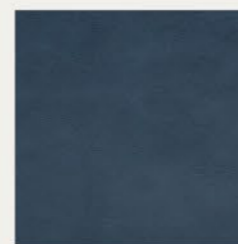
21750



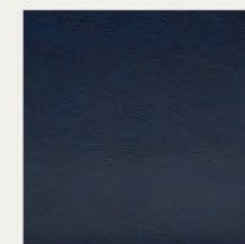
21751



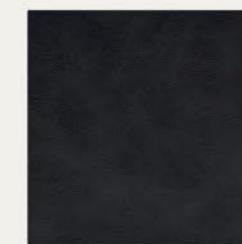
21754



21755



21757



21758

CANYON



21728

CANYON

PRODUCT SPECIFICATIONS

Technical Informations	Unit	Value	Test Method
Composition		80% pvc, 18% polyester, %2 pu	
Weight	gr/m ²	700 ±5%	TS 6450
Thickness	mm	1,35 ±5%	ISO 2589
Width	cm	140 ±2	TS 4119
Roll Length	m	30	
Resistance to Abrasion	martindale	>100.000	BS EN ISO 12947-2:2016
Tensile Strength (Lenght)	n	485	ISO 1421
Tensile Strength (Across)	n	290	ISO 1421
Elongation Strenght		Length 68 g Across 240 g	ISO 1421
Colour Fastness to Light		+5	DIN EN ISO 105-B02:1994
Flammability		Pass	BS 5852-1:1979 EN 1021 1-2

Product Characteristics

- Only valid for Canyon colour codes.
- The cleaning process should start around the stain and held without dispersing the stain. It should be cleaned by gently wiping.
- You can wipe off ballpoint pen stains with 20% ethanol. For other stains such as coffee, tea, milk, cosmetics, jam, syrup, fruit juice 40c lukewarm water, neutral cleaning agents and sponge can be used.
- In oil and grease stains, the stain can be wiped of with the help of a brush after the chalk powder is used for covering the stain.
- The shoe polish stain can be removed with perchloroethylene or 10% diluted ammonia.
- All kinds of real and artificial leather should not be cleaned with bleach, detergent, coloured soap and similar materials and the product should not be exposed to direct sunlight. It should be kept away from sources of strong light (spot, etc.) and heat.
- There may be colour and tone differences between different lots, arising from the nature of the production and within conventionally accepted limits.
- All kinds of leather and velvet should not come into direct contact with the sponge. Sponge should be covered with interlining or cotton lining.
- Please get a confirmation about stocks.



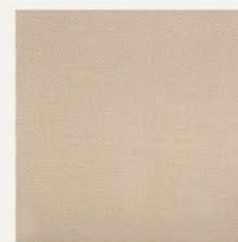
Mustang

A durable and easy-to-clean material made of 100% polyester with a high texture density and 3D effect.

CLASS A



MUSTANG



12-33



33-33



33-61



M80-37



27-33



27-61



60-61



M42-60



M80-33



M80-M75



88-88



68-M75



33-M89



66-37



66-63



65-M89



65-65



10-63



67-10



68-68

MUSTANG



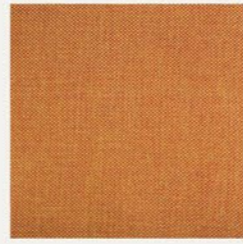
68-41



12-M66



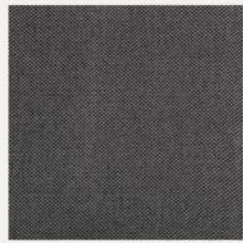
41-10



66-41



01-01



27-10



09-09



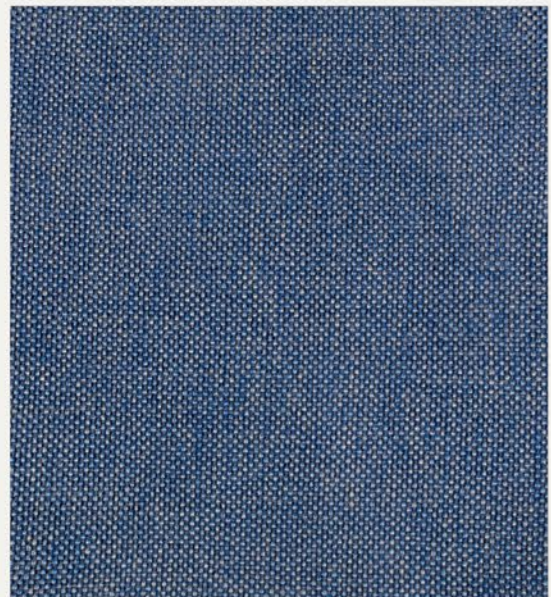
10-M75



10-68



10-10



68-60



428

Colors may slightly vary due to photographic lighting sources or your monitor settings.

MUSTANG

PRODUCT SPECIFICATIONS

Technical Informations	Unit	Limit	Value	Test Method
Composition	100% polyester			
Weight	gr/m ²		280 ±5%	ISO 3801:1977
Width	cm		140	ISO 22198:2006
Resistance to Abrasion	tour		>80.000	ISO 12947-2:2017
Tensile Strength	n	warp weft	1600 1300	EN ISO 13934-1:2013
Tear Strength	n	warp weft	122 115	EN ISO 13937-3:2002
Resistance to Seam Slippage	mm	warp weft	3,9 4	ISO 13936-2:2006
Pilling			5	ISO 12945-2:2002
Colour Fastness		wet dry	5 5	ISO-105-X12:2016
Colour Fastness to Artificial Light			blue wool 6 gray scale 4	ISO 105 B02:2014

Product Characteristics

- Only valid for Mustang colour codes.
- It can be cleaned with neutral cleaning materials. Chemical solvents should not be used.
- The detergent must not include oxide bleach and bleach.
- There may be colour and tone differences between different lots, arising from the nature of the production and within conventionally accepted limits.
- The product should not be exposed to direct sunlight.
- The cutting should be done after the approval of the colour, tone and defect controls by the related parties. In this context, taking into account that, although exceptional, there may be tonal differences of products that arrive in pieces, they should be checked with the delivery of the product before cutting. Making upholstery without above mentioned examination may cause not getting the desired result.
- While cutting or upholstery, the products should never be left folded, nor should they be left under-weight that may cause forming lines on them.
- The tape should never be used on the product surface. This matter, which our company pays attention to, should not be overlooked after the product has been checked or if it is wrapped for a second time during use. When the leftover product should be rolled, please pay attention not to fold it tightly.
- All kinds of leather and velvet should not come into direct contact with the sponge. Sponge should be covered with interlining or cotton lining.
- Stains, such as oil, chocolate, chewed gum should never be cleaned with liquid (water, thinner, acetone and other solvents).
- Dry cleaning methods are also recommended for such stains.
- Vacuum cleaner can be used on daily and weekly basis.
- Please get a confirmation about stocks.
- The using place and purpose of the product should be conventionally accepted places and purposes.
- No liability can be accepted for products that are not used properly.
- The information stated above is of reliable common values. Please ask for special values of the contract.

429

Colors may slightly vary due to photographic lighting sources or your monitor settings.

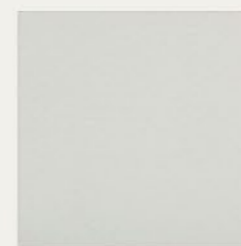
New King

Easy to clean artificial leather made of a special PVC and polyurethane mix with the support of polyester base lining.

CLASS A



NEW KING



6



13742



13743



13719



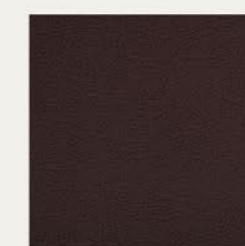
62501



13723



13724



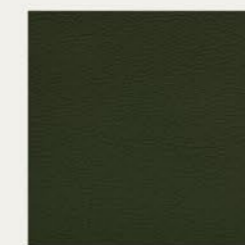
13725



62503



62504



17563



62502



62505



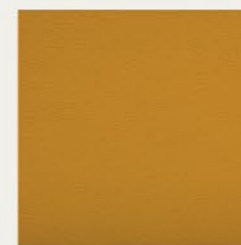
17566



13823



17567



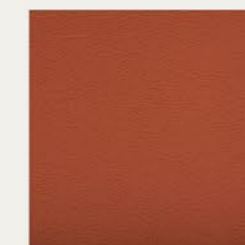
24327



13592



13721

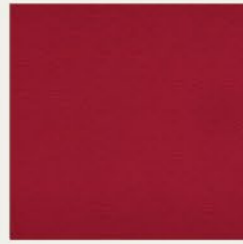


24329

NEW KING



13822



17565



13591



24328



17560



17568



13727

NEW KING

PRODUCT SPECIFICATIONS

Technical Informations	Unit	Value	Test Method
Composition		76% pvc, 22% polyester, 2% pu	
Weight	gr/m ²	600 ±5%	
Width	cm	138-140	
Roll Length	m	30	
Resistance to Abrasion	mantindale	230.000	BS EN ISO 12947-2:1999&4:1999
Bursting Strength		> 600 kPa	BS EN ISO 5470-1:1999
Elongation Strength	warp weft	5803 g. 2853 g.	BS EN ISO 4674-1:1999
Resistance to Seam Slippage	warp weft	250 n 250 n	BS 3320:1998
Flammability		pass	BS 5852-1:1979 EN 1021 1-2
Light Fastness		5	DIN EN ISO 105-B02:2002

Product Characteristics

- Only valid for New King colour codes.
- Our Atlantis product line has flame retardancy feature.
- The cleaning process should start around the stain and held without dispersing the stain. It should be cleaned by gently wiping.
- All kinds of real and artificial leather should not be cleaned with bleach, detergent, coloured soap and similar materials and the product should not be exposed to direct sunlight.
- The product should be kept away from sources of strong light (spot, etc.) and heat.
- The using place and purpose of the product should be conventionally accepted places and purposes. No liability can be accepted for products that are not used properly.
- Leather products should not be kept in plastic packaging and humid places for a long time. Solid objects such as toys and jewellery may cause unintended starches on the material.
- Leather-covered products should be placed at least 50 cm away from heat sources (stoves, radiators, fireplaces, etc.). Otherwise, the leather may lose moisture which may cause undesired cracks.
- Impacts, scratches, etc. that may occur due to transportation and external. should be considered out of warranty.
- Direct contact of pets with leather goods should be prevented.
- Direct contact of the products with high surface temperature (iron, etc.) with the leather may cause a damage.
- Protect the leather from harsh blows.
- Since ink on newspapers or magazines may get on the product and leave a permanent stain, do not leave it on the product. Especially if you sit with new jeans that give dark coloured paint on light coloured leather as an example, there may be stains. Note that this stain is not caused by the leather itself, but by the trousers that dye and colour.
- Weekly remove the dust or dirt on the surface of the product with a damp white and soft cotton cloth dampened with soapy water, rinse and dry when necessary.
- When coffee, tea, etc. spilled: Use a highly absorbent white cloth or paper. Do not delete it immediately! Make sure the stain is absorbed by the cloth or paper.
- Wipe off the remaining moisture with a soft cloth in circular motions.
- Alcohol and cologne are not recommended for difficult stains such as ink, ballpoint pen, lipstick. Wipe with warm soapy water with gentle circular movements.
- There may be colour and tone differences between different lots, arising from the nature of the production and within conventionally accepted limits.
- Please get a confirmation about stocks.



Colors may slightly vary due to photographic lighting sources or your monitor settings.

Colors may slightly vary due to photographic lighting sources or your monitor settings.

New Sabine

Water repellent and high-colored material with linen effect.

CLASS A

NEW SABINE



WHITE



IVORY



TAN



SAND



SILVER



TAUPE



STONE



SADDLE



PALE BROWN



BROWN



CHOCO



WINE



BEIGE RED



MAROC



APRICOT



KIWI



CEMENT GREY



GREEN GREY



NORDIC



AQUA

NEW SABINE



BLUE



BLACK



ANTRASIT



Colors may slightly vary due to photographic lighting sources or your monitor settings.

436

NEW SABINE

PRODUCT SPECIFICATIONS

Technical Informations	Unit	Limit	Value	Test Method
Composition	100% polyester			
Weight	gr/m ²		380	ISO 3801
Width	cm		137	ISO 22198
Roll Meter	m		50	ISO 12947-2 ISO 1294
Resistance to Abrasion	martindale		40.000	BS EN ISO 12947-2
Tear Strength	n	warp weft	190 154	ISO 13937-2
Resistance to Seam Slippage	mm	warp weft	1-2 0-1	ISO 13906-2
Pilling	2000 dvr		4	ISO 12945-2
Light Fastness		dry wet	5 5	ISO 105-X12

Product Characteristics

- Only valid for New Sabine colour codes.
- It can be cleaned with neutral cleaning materials. Chemical solvents should not be used.
- The detergent must not include oxide bleach and bleach.
- There may be colour and tone differences between different lots, arising from the nature of the production and within conventionally accepted limits.
- The product should not be exposed to direct sunlight.
- The cutting should be done after the approval of the colour, tone and defect controls by the related parties. In this context, taking into account that, although exceptional, there may be tonal differences of products that arrive in pieces, they should be checked with the delivery of the product before cutting. Making upholstery without above mentioned examination may cause not getting the desired result.
- While cutting or upholstery, the products should never be left folded, nor should they be left under-weight that may cause forming lines on them.
- The tape should never be used on the product surface. This matter, which our company pays attention to, should not be overlooked after the product has been checked or if it is wrapped for a second time during use. When the leftover product should be rolled, please pay attention not to fold it tightly.
- All kinds of leather and velvet should not come into direct contact with the sponge. Sponge should be covered with interlining or cotton lining.
- Stains, such as oil, chocolate, chewed gum should never be cleaned with liquid (water, thinner, acetone and other solvents).
- Dry cleaning methods are also recommended for such stains.
- Vacuum cleaner can be used on daily and weekly basis.
- The dark colours of this product, which is produced as ball painting, should be cleaned with a damp cloth after laying and afterwards, the paint crumbs that could remain between the textures. This process can be done several times if necessary.
- The product has a teflon feature.
- Please get a confirmation about stocks.

437

Colors may slightly vary due to photographic lighting sources or your monitor settings.

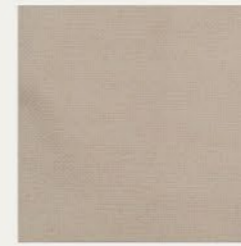
Nino

High abrasion resistant material, suitable for contract with a wool-like look and touch.

CLASS A



NINO



135-135



35-135



17-135



18-17



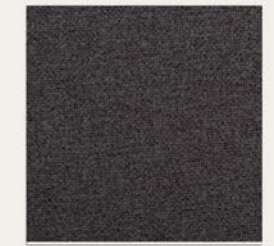
133-38



69-38



18-72



38-38



143-12



147-12



143-87



52-27



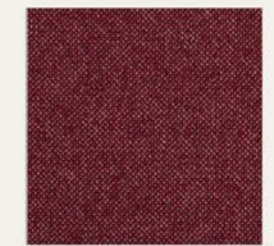
22-27



22-147



27-147



130-32



24-24



87-87



69-87

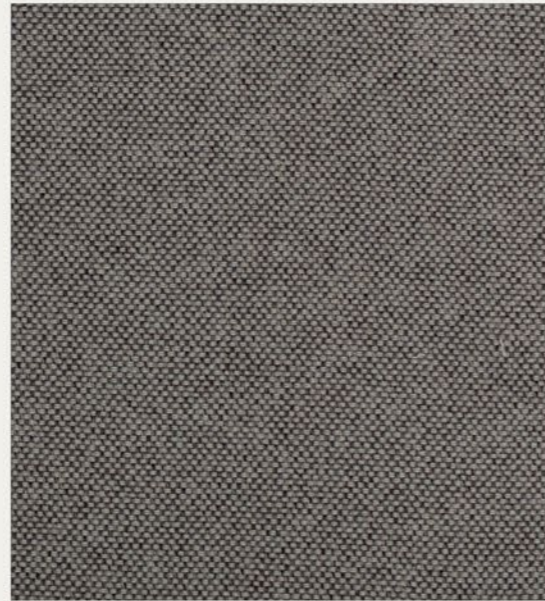


72-24

NINO



09-24



07-135

NINO

PRODUCT SPECIFICATIONS

Technical Informations	Unit	Value	Test Method
Composition	100% polyester		
Weight	gr/m ²	469 ±10%	
Width	cm	140 ±2	
Roll Meter	m	50	
Resistance to Abrasion	tour	70.000	ISO 12947-2:1998
Light Fastness		4-5	ISO 105-X12:2001
Pilling		4-5	ISO 12945-2:2000

Product Characteristics

- Only valid for Nino colour codes.
 - It can be cleaned with neutral cleaning materials. Chemical solvents should not be used.
 - The detergent must not include oxide bleach and bleach.
 - There may be colour and tone differences between different lots, arising from the nature of the production and within conventionally accepted limits.
 - The product should not be exposed to direct sunlight.
 - The cutting should be done after the approval of the colour, tone and defect controls by the related parties. In this context, taking into account that, although exceptional, there may be tonal differences of products that arrive in pieces, they should be checked with the delivery of the product before cutting. Making upholstery without above mentioned examination may cause not getting the desired result.
 - While cutting or upholstery, the products should never be left folded, nor should they be left under-weight that may cause forming lines on them.
 - The tape should never be used on the product surface. This matter, which our company pays attention to, should not be overlooked after the product has been checked or if it is wrapped for a second time during use. When the leftover product should be rolled, please pay attention not to fold it tightly.
 - All kinds of leather and velvet should not come into direct contact with the sponge. Sponge should be covered with interlining or cotton lining.
 - Stains, such as oil, chocolate, chewed gum should never be cleaned with liquid (water, thinner, acetone and other solvents).
- Dry cleaning methods are also recommended for such stains.
- Vacuum cleaner can be used on daily and weekly basis.

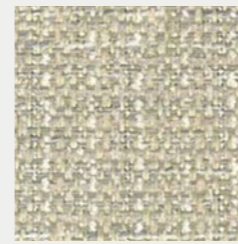


Gana

Voluminous fabric
with a 3D look
emerging from
opposite colour
schemes.
A balanced view
in every space.

CLASS A

GANA



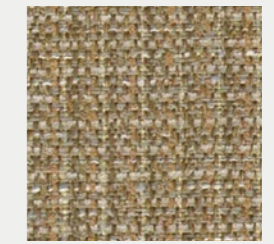
01-01



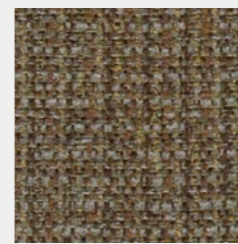
01-08



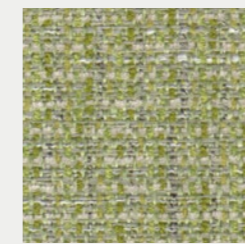
01-06



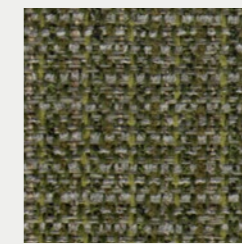
01-04



02-01



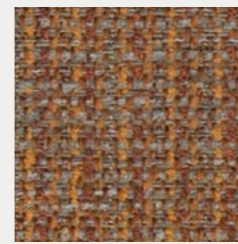
01-07



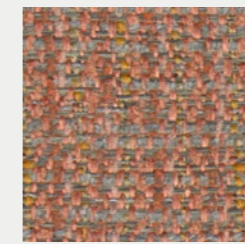
02-05



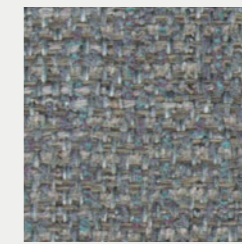
01-03



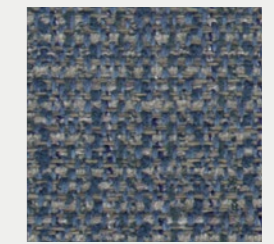
02-02



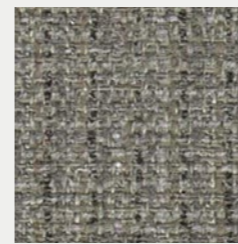
02-04



02-09



02-08



02-07



02-06

GANNA

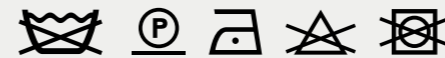


01-05

GANNA

PRODUCT SPECIFICATIONS

Technical Informations	Unit	Value	Test Method
Weight	gr/m ²	330 (± %5)	
Thickness	mm		
Width	cm	140	
Roll Meter	mt	50	
Resistance to Abrasion		40.000	EN ISO 12947-2
Tensile Strength	N	Weft-> 983 N Warp-> 953 N	EN ISO 13934-1
Tear Strength	N	Weft-> 81 N Warp-> 115 N	EN ISO 13937-3
Seam Slippage	mm	Weft-> 4,3 mm Warp-> 2,4 mm	EN ISO 13936-2
Pilling	2000 cycle	4-5	ISO 12945-2
Colour Fastness - WET		3-4	ISO 105-X12
Colour Fastness - DRY		4	ISO 105-X12
Colour Fastness to Light		4-6	ISO 105 B02
Composition		%77 PES %23 PAN	



Product Characteristics

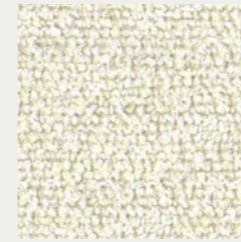
- Only valid for Gana colour codes.
- It can be cleaned with neutral cleaning materials. Chemical solvents should not be used.
- The detergent must not include oxide bleach and bleach.
- There may be colour and tone differences between different lots, arising from the nature of the production and within conventionally accepted limits.
- The product should not be exposed to direct sunlight.
- The cutting should be done after the approval of the colour, tone and defect controls by the related parties. In this context, taking into account that, although exceptional, there may be tonal differences of products that arrive in pieces, they should be checked with the delivery of the product before cutting. Making upholstery without above mentioned examination may cause not getting the desired result.
- While cutting or upholstery, the products should never be left folded, nor should they be left under-weight that may cause forming lines on them.
- The tape should never be used on the product surface. This matter, which our company pays attention to, should not be overlooked after the product has been checked or if it is wrapped for a second time during use. When the leftover product should be rolled, please pay attention not to fold it tightly.
- All kinds of leather and velvet should not come into direct contact with the sponge. Sponge should be covered with interlining or cotton lining.
- Stains, such as oil, chocolate, chewed gum should never be cleaned with liquid (water, thinner, acetone and other solvents).
- Dry cleaning methods are also recommended for such stains.
- Vacuum cleaner can be used on daily and weekly basis.
- Please get a confirmation about stocks.
- The using place and purpose of the product should be conventionally accepted places and purposes.
- No liability can be accepted for products that are not used properly.
- The information stated above is of reliable common values. Please ask for special values of the contract.

Twister

Durable and eye-pleasing fabric that adds inspiration to modern spaces.

CLASS A

TWISTER



9852



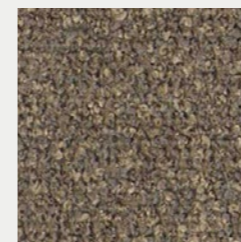
9855



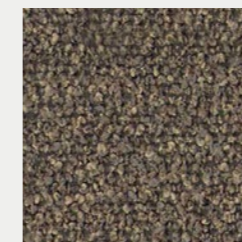
9859



16060



16056



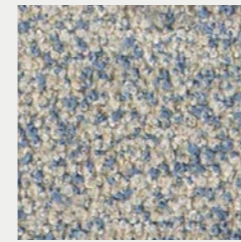
5405



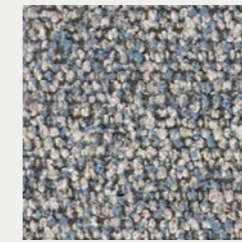
16059



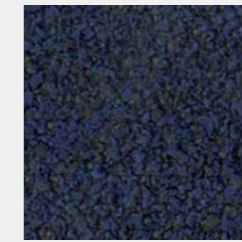
1202



9858



5401



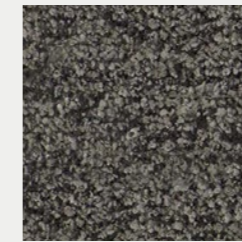
5408



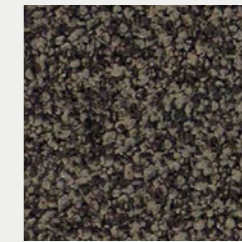
5406



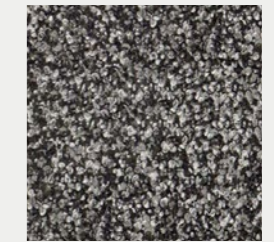
5404



5403



503



501

TWISTER

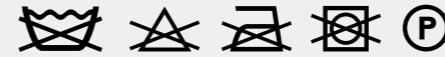


16054

TWISTER

PRODUCT SPECIFICATIONS

Technical Informations	Unit	Value	Test Method
Weight	gr/m ²	507 (± %5)	BS EN ISO 12127:1998
Thickness	mm	1,5	
Width	cm	140 (± %5)	
Roll Meter	mt	40 (± %5)	
Resistance to Abrasion		50.000	EN ISO 12947-2
Seam Slippage	mm	Weft 2-3 / Warp 2-3	ISO 13936-2
Pilling	2000 cycle	4-5	ISO 12945-2
Colour Fastness to Light		5	TS EN ISO 105-B2
Composition		%13 COT %37 PES % 50 PP	



Product Characteristics

- Only valid for Twister colour codes.
- It can be cleaned with neutral cleaning materials. Chemical solvents should not be used.
- The detergent must not include oxide bleach and bleach.
- There may be colour and tone differences between different lots, arising from the nature of the production and within conventionally accepted limits.
- The product should not be exposed to direct sunlight.
- The cutting should be done after the approval of the colour, tone and defect controls by the related parties. In this context, taking into account that, although exceptional, there may be tonal differences of products that arrive in pieces, they should be checked with the delivery of the product before cutting. Making upholstery without above mentioned examination may cause not getting the desired result.
- While cutting or upholstery, the products should never be left folded, nor should they be left under-weight that may cause forming lines on them.
- The tape should never be used on the product surface. This matter, which our company pays attention to, should not be overlooked after the product has been checked or if it is wrapped for a second time during use. When the leftover product should be rolled, please pay attention not to fold it tightly.
- All kinds of leather and velvet should not come into direct contact with the sponge. Sponge should be covered with interlining or cotton lining.
- Stains, such as oil, chocolate, chewed gum should never be cleaned with liquid (water, thinner, acetone and other solvents).
- Dry cleaning methods are also recommended for such stains.
- Vacuum cleaner can be used on daily and weekly basis.
- Please get a confirmation about stocks.
- The using place and purpose of the product should be conventionally accepted places and purposes.
- No liability can be accepted for products that are not used properly.
- The information stated above is of reliable common values. Please ask for special values of the contract.

Plain Melange

Water repellent, stain resistant and mildew resistant fabric, designed to furnish indoor and outdoor spaces.

Only for Sole Collection.

CLASS A

IRISUN - PLAIN MELANGE



020



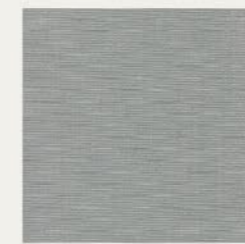
783



835



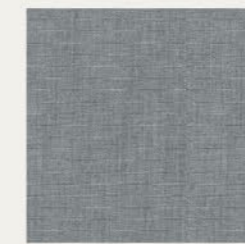
018



070



834



072



693



875



016



879



079



872



690



876



694



870



882



833



583

451

Colors may slightly vary due to photographic lighting sources or your monitor settings.

IRISUN - PLAIN MELANGE



874



IRISUN - PLAIN MELANGE

PRODUCT SPECIFICATIONS

Yarn	100% solution dyed acrylic
Width	137 cm
Roll length	30 m
Weight	240 gr/m ²
Martindal	15000 cycles
Finishing	Water repellent, anti-stain and anti-mould treatment
Oil-repellency	5 off 8
Spray Test	5 off 5
UV Colour fastness	7 off 8
Colour fastness to weather	7 off 8
Colour fastness after washing at 40°C	5 off 5
Flame resistance	CAL TB 117 - 2013 Section 1
Warranty	5 years
Tolerance	± 5%
Care	See the ISO symbols
Biocides	It contains biocidal agent with approved active substances: Octyl Isothiazolinone

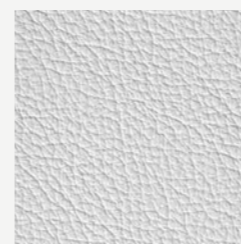
Bogota

Real leather that has a pigmented and protective top coat with a soft handle and a silky matt finish.

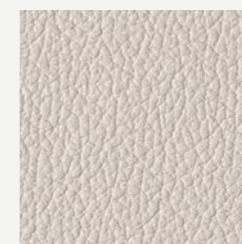
CLASS HD1



BOGOTA



109837



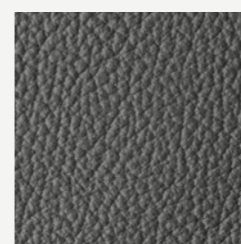
158



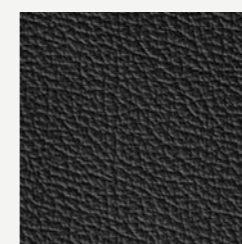
316



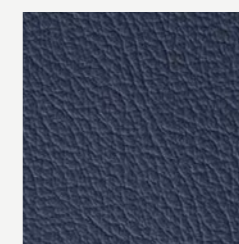
4460



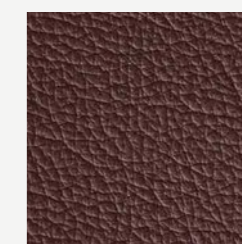
109836



106984



344



9680



109839



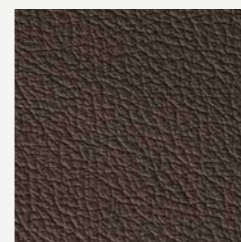
109840



109843



109841



109842



699



677



2078



109838



1609

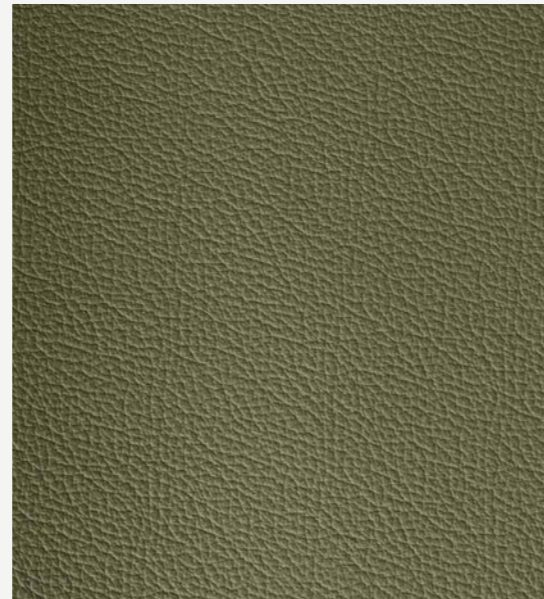


2829

455

Colors may slightly vary due to photographic lighting sources or your monitor settings.

BOGOTA



8371



BOGOTA

PRODUCT SPECIFICATIONS

BOGOTA

Test	Method	Result
Colour fastness to rubbing Nr. 500 dry rubs Nr. 150 wet rubs Nr. 80 alkaline pH 8	IUF 450/UNI EN ISO 11640 IUF 450/UNI EN ISO 11640 IUF 450/UNI EN ISO 11640	>= 4 grey scale >= 4 grey scale >= 4 grey scale
Flexing endurance	IUP 20 / UNI EN ISO 5402	>= 30.000
Tear strength	IUP 40 / UNI EN ISO 3377-1	>= 20 N
Adhesion	IUF 470 / UNI EN ISO 11644	>= 3.50 N/cm
Light resistance (xenon test)	IUF 402 / UNI EN ISO 105-B02	5 blue scale
Fire resistance	UNI EN ISO 1021-1/2 BS 5852 1991 Sec. 4 NI/O-1 California T.B. 117	Pass Pass Pass

Product Characteristics

- Avoid placing leather near direct sunlight.
- Keep the leather away from heat sources.
- Dust regularly with a soft and dry cloth.
- If a spill should occur, blot immediately with a clean absorbent cloth or sponge.
- For deeper cleansing use a lightly damp cloth with natural soap. Do not saturate.
- Do not rub. Use a circular motion and clean the entire surface.
- Using a soft and dry cloth, dry immediately after the treatment.
- Never use household cleaning agents, furniture polishes, ammonia, bleach, varnish, oils or similar.
- If you wish to use specifically made creams or lotions for leather upkeep and care feel please consult specialized companies and leather professionals who supply such sets. If you need recommendations on who to consult, we are happy to indicate.

All our leathers comply with the strict regulations and EU Directives covering the use and presence of PCP, CFC, Chromo VI, Dimethylfumarate (DMF) and Azo dyestuffs during the tanning process. Due to the natural properties of leather colour variations between one dye lot and another may occur.

This technical specification sheet replaces any copies in your possession. The values indicated in this sheet refer to the leather at the time of supply. Once the leather has been processed, cut, marked we can no longer guarantee the same values.

Considering the natural aspect of this product and unpredictable related factors, we reserve the right to change the indicated specifications at any time without prior notice.

UPHOLSTERY CATEGORIES



	BRAND	NAME	TYPE
CLASS A	CAMIRA	ERA	FABRIC
	CAMIRA	XTREME	FABRIC
	FIDIVI	TIME	FABRIC
	SFC	ATHENA	FABRIC
	ALYA	CANYON	ARTIFICIAL LEATHER
	ALYA	MUSTANG	FABRIC
	ALYA	NEW KING	ARTIFICIAL LEATHER
	ALYA	NEW SABINE	FABRIC
	ALYA	NINO	FABRIC
	ALYA	GANA	FABRIC
	ALYA	TWISTER	FABRIC
	IRUSUN	PLAIN MELANGE	FABRIC
CLASS B	CAMIRA	ASPECT	FABRIC
	CAMIRA	QUEST	FABRIC
	FIDIVI	MILANO	FABRIC
	FIDIVI	ROCCIA	FABRIC
	SPRADLING	VALENCIA	ARTIFICIAL LEATHER
	KETS	ANGOLA	FABRIC
	ALYA	LOOP	FABRIC
CLASS C	CAMIRA	MAIN LINE FLAX	FABRIC
	CAMIRA	VITA	ARTIFICIAL LEATHER
	FIDIVI	FOX	FABRIC
	FIDIVI	LASER J	FABRIC
	SPRADLING	SILVERTEX	ARTIFICIAL LEATHER
CLASS D	CAMIRA	BLAZER	FABRIC
	CAMIRA	OCEANIC	FABRIC
	CAMIRA	REGENT	FABRIC
CLASS HD1	ORION	BOGOTA	REAL LEATHER

FABRIC COMPATIBILITY LIST

FABRIC COMPATIBILITY LIST

Document No: KAL-LS-016
 First Release Date: 01.03.2022
 Revision No: 12
 Revision Date: 18.10.2023



	A	A	A	A	A	A	A	A	A	A	A	B	B	B	B	B	B	B
	NEW SABINE	NINO	MUSTANG	NEW KING	CANYON	XTREME CAMIRA	ERA CAMIRA	ATHENA	TIME FIDIVI	GANA	TWISTER	ROCCIA FIDIVI	ANGOLA	ASPECT CAMIRA	QUEST CAMIRA	VALENCIA SPRADLING	LOOP	MILANO FIDIVI
MILES	●	●	●	●	●	●	●	●	●	●	●	●	○	○	●	●	●	●
MORPH	●	●	●	●	●	○	○	●	●	○	○	●	○	○	●	●	●	●
MOST	●	●	●	●	●	○	○	●	●	●	●	●	○	○	●	●	●	●
NODA	●	●	○	●	●	●	○	●	●	●	●	●	○	○	●	●	●	●
ORA	●	●	○	●	●	●	○	●	●	●	●	●	○	○	●	●	○	●
ORB CHAIR	●	●	●	●	●	●	○	●	●	●	●	●	○	○	●	●	●	●
PERA CHAIR / LOUNGE / BAR	●	●	●	●	●	●	○	●	●	●	●	●	○	○	●	●	●	●
PICK	●	●	●	●	●	○	○	●	●	●	●	●	○	○	●	●	●	●
PI	●	●	●	●	●	○	○	●	●	●	●	●	○	○	●	●	●	●
PIU	●	●	●	●	●	○	○	●	●	●	●	●	○	○	●	●	●	●
REGO PLAY	●	●	●	●	●	●	○	●	●	○	○	●	○	○	●	●	○	●
REGO CHAIR / LOUNGE	●	●	●	●	●	●	○	●	●	●	●	●	○	○	●	●	●	●
REST	●	●	●	●	●	●	○	●	●	●	●	●	○	○	●	●	●	●
RIFT BAR	●	●	●	●	●	●	○	●	●	●	●	●	○	○	●	●	●	●
ROLLER	●	●	●	●	●	○	○	●	●	●	●	●	○	○	●	●	●	●
ROUND / ROUND PRIVATES	●	●	●	●	○	○	○	●	●	●	●	●	○	○	●	●	●	●
SIMPLE	●	●	●	●	●	○	○	●	●	●	●	●	○	○	●	●	●	●
SOLE CHAIR / LOUNGE / BAR	●	●	●	●	○	●	○	●	●	●	●	●	○	○	●	●	●	●
SPIRIT CHAIR / BAR	●	●	●	●	●	●	○	●	●	●	●	●	○	○	●	●	●	●
TO BE	●	●	●	●	○	○	○	●	●	●	●	●	○	○	●	●	●	●
ZEN SOFA / POUF	●	●	○	○	○	○	●	●	●	○	●	●	○	○	●	●	●	●
ZENGER	●	●	●	●	●	○	○	●	●	●	●	●	○	○	●	●	●	●
ZONE	●	●	●	●	●	●	○	●	●	●	●	●	○	○	●	●	●	●

Suitable ●
 Not recommended by B&T but can be used on demand ○
 Not suitable ✖

	C	C	C	C	C	D	D	D	D
	FOX FIDIVI	LASER J FIDIVI	SILVERTEX SPRADLING	VITA CAMIRA	MAIN LINE FLAX CAMIRA	OCEANIC CAMIRA	BLAZER CAMIRA	REGENT CAMIRA	BOGOTA
MILES	●	○	●	○	○	○	●	●	●
MORPH	●	●	●	○	○	○	●	●	●
MOST	●	●	●	●	○	●	●	●	●
NODA	●	○	●	●	○	○	●	●	●
ORA	●	●	●	●	○	●	●	●	●
ORB CHAIR	●	●	●	○	○	●	●	●	●
PERA CHAIR / LOUNGE / BAR	●	●	●	○	○	●	●	●	●
PICK	●	●	●	●	○	●	●	●	●
PI	●	●	●	●	○	●	●	●	●
PIU	●	●	●	●	○	●	●	●	●
REGO PLAY	●	●	●	○	○	○	●	●	●
REGO CHAIR / LOUNGE	●	●	●	○	○	●	●	●	●
REST	●	●	●	○	○	●	●	●	●
RIFT BAR	●	●	●	○	○	●	●	●	●
ROLLER	●	●	●	●	○	●	●	●	●
ROUND / ROUND PRIVATES	●	●	●	○	○	●	●	●	●
SIMPLE	●	○	●	○	○	○	●	●	●
SOLE CHAIR / LOUNGE / BAR	●	●	●	○	○	●	●	●	●
SPIRIT CHAIR / BAR	●	●	●	○	○	●	●	●	●
TO BE	●	●	●	○	○	●	●	●	●
ZEN SOFA / POUF	●	○	●	✖	○	○	●	●	●
ZENGER	●	●	●	●	○	●	●	●	●
ZONE	●	●	●	○	○	●	●	●	●

* Please note that leather is a natural material that becomes soft and stretches over time.

Suitable ●
 Not recommended by B&T but can be used on demand ○
 Not suitable ✖