

Designed by Komplot Design

PRODUCT



COLORS



// Black stained ash



// Grey Marble



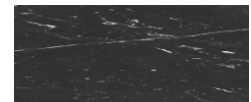
// Walnut nature



// White Marble



// Oak nature



// Black Marble

DESCRIPTION

The Gubi Dinning table Marble is designed by Komplot Design. The table tops are in 20 mm marble, grey white or black. These table tops are matched with the wooden base and legs in black stained ash, walnut nature or oak nature. The Gubi dinning table Marble comes in 3 different sizes: Round Ø130 cm, rectangular 100 x 200 cm and elliptical 120 x 230 cm

VERSION - GUBI DINNING TABLE

TABLE LEGS

Oak nature legs // Gloss level 20-30
Black stained ash legs // Gloss level 20-30
Walnut nature legs // Gloss level 20-30

TABLE TOPS

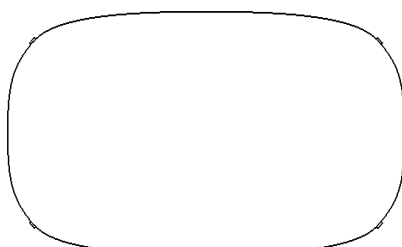
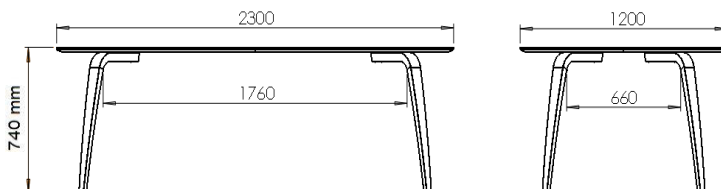
Bianco Carrara - white marble top
Nero Marquina - black marble top
Grey Emperador - grey marble top

VERSION - GUBI DINNING TABLE

Order item - look for part number in the pricelist.

Series contains the following:

GUBI TABLE MARBLE round Ø130 cm
GUBI TABLE MARBLE rectangular 100 x 200 cm
GUBI TABLE MARBLE elliptical 120 x 230 cm



FACTS

MEASUREMENT - L x W x H mm

Table height: 740 mm
Table top length: 2300 mm
Table top width: 1200 mm
Table top thickness: 20 mm
Base height: 700 mm
Leg thickness: 30 - 45 mm
Leg width: 35 - 80 mm

WEIGHT ITEM

Table top: 138 kg
Legs: 6.4 kg
Mounting plate: 17 kg

PACKAGING TYPE

Cardboard, MDF, Low density fiberboard

PACKAGING

MEASUREMENT - L x W x H cm

Top: L: 240 X W:130 X H: 6.5 CM
legs L: 96 x W: 37 x H 10 CM

Mounting plate: L: 75 x W:175 x H: 4

WEIGHT PACKAGING

MOUNTINGPLATE - MATERIAL

Cardboard 2800 g
Delivery note: 5 g

Foam protector: 100 g
Packaging mountingpl.: 2,9 kg

WEIGHT PACKAGING TOP - MATERIAL TYPE

Chipboard: 74000 g
Delivery note: 5 g
Foam protector: 1000 g
Packaging top: 75 kg

WEIGHT PACKAGING LEGS - MATERIAL TYPE

Cardboard 635 g
Delivery note: 5 g
Foam protector: 100 g
Screws: 260 g
Packaging legs: 1 kg

WEIGHT TOTAL

240 kg

NUMPER OF PARCELS

3