

GAZZDA

---

# Flip Chair

Product sheet

design by  
Mustafa Čohadžić



# Flip Chair

## Product facts

### Materials

Body	Solid oak
Backrest	Oak veneer
Finish	Lacquered
Seat	Oak veneer / leather or fabric upholstery

### Technical features

#### Body

The Flip Chair features a solid wood frame defined by clean, angular geometry and a sculptural silhouette. The bent backrest is crafted from thin veneer slices of high-quality oak, combining strength with visual lightness. Armrests are integrated into the frame with rectilinear supports, reinforcing the chair's distinctive character. The structural elements are joined using visible, characteristic wedged mortise and tenon joints. Plastic gliders are attached to the legs, making the chair suitable for most flooring types.

#### Seat

Three material options for the seat are available: form-pressed veneer, leather upholstery, or fabric upholstery.

#### Finish

Available in a range of finishes, including natural oak lacquer and fully pigmented colors such as Black, Green, Blue Grey, and Red. A Bi-Color version is also offered, featuring a natural lacquered seat and backrest paired with a Black base. Each finish highlights the wood grain while offering a contemporary color palette suited for a variety of interior styles.

#### Cleaning

Please see [Product](#) or [Material](#) page on our website.

### Notes to consider

#### Variations

Natural variations in wood color and surface may occur. Regular maintenance will ensure the wood preserves its authentic beauty and can last for generations.

#### Product changes

Please note that Gazzda reserves the right to alter construction and design without notice.

#### Dimensions (tolerances)

The dimensions shown are indicative, they may vary due to the natural properties of wood, season, or manufacturing processes. Deviations from the specified size may occur, usually no more than 1 cm.

### Environmental profile

#### Sustainable approach

One pivotal aspect of our commitment to sustainability is our firm dedication to sourcing wood only from FSC®-certified forestry. With 85% of GAZZDA products bearing the FSC® label (FSC-C130602), you can be assured of its ethical origin and contribution to preserving our precious forests.

### Downloads

#### Professionals Area

The digital showroom library for architects, interior designers, dealers, retailers and other professional users, with all of the important information about Gazzda products. The area includes product images, 2D, 3D & BIM files with textures, product and material specification sheets, test certificates, catalogues, brochures and other marketing material. Please see [gazzda.presscloud.com](https://gazzda.presscloud.com) for more information.

For all additional inquiries regarding Flip Chair please feel free to [contact us](#).

# Flip Chair

Base Solid Wood, Backrest Veneer, Seat Upholstered

## Basic info

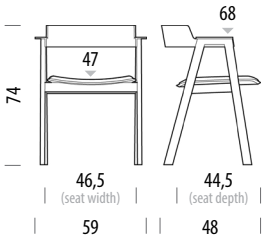
Design	Mustafa Čohadžić
Product size	W: 59, D: 48, H: 74
Packaging	W: 61, D: 50, H: 76
Volume	0,23 m <sup>3</sup>
Net weight	6,0 kg
Gross weight	8,0 kg



Item no. 6BC

Felten gliders are included as standard • Assembled product

Additional dimensions	Width	Depth	Height
Seat	46,5	44,5	47
Armrest			68



# Flip Chair

Base Solid Wood, Seat / backrest Veneer

## Basic info

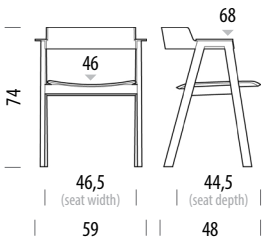
Design	Mustafa Čohadžić
Product size	W: 59, D: 48, H: 74
Packaging	W: 61, D: 50, H: 76
Volume	0,23 m³
Net weight	6,0 kg
Gross weight	8,0 kg



Item no. 6CB/6CD

Felten gliders are included as standard • Assembled product

Additional dimensions	Width	Depth	Height
Seat	46,5	44,5	46
Armrest			68

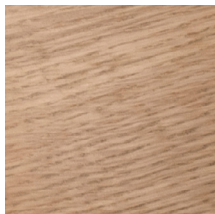


# Flip Chair

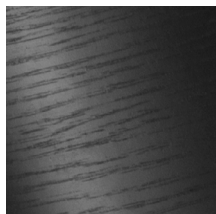
Available wood types and finishes

Version: 25-7-2025

## LACQUERED WOOD



Lacquered Oak  
Natural



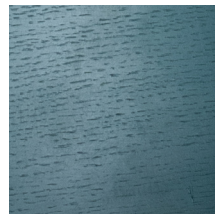
Lacquered Oak  
RAL 9005 Black



Lacquered Oak  
RAL 3020 Red



Lacquered Oak  
RAL 5014 Blue

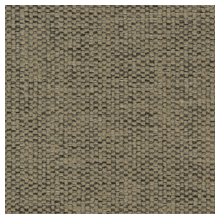


Lacquered Oak  
RAL 6004 Green

# Flip Chair

## Available textiles

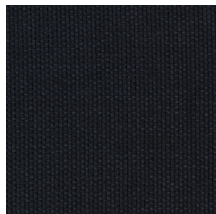
### FABRIC CATEGORY 10



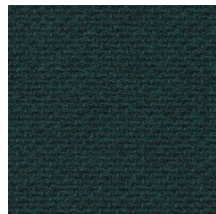
Guest fabric  
0250



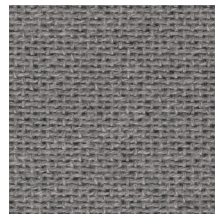
Guest fabric  
0210



Guest fabric  
0780



Autumn fabric  
0971



Autumn fabric  
0131

### FABRIC CATEGORY 20



Main Line Flax fabric  
MLF20 Upminster

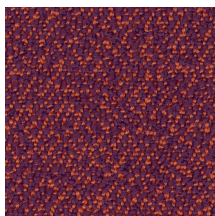
### FABRIC CATEGORY 30



Yoredale fabric  
UDA08 Gayle



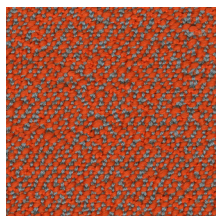
Yoredale fabric  
UDA29 Gordale



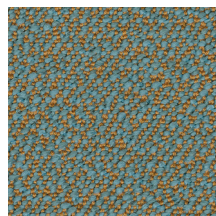
Sera fabric  
Berry



Sera fabric  
Calla



Sera fabric  
Glow



Sera fabric  
Mirage



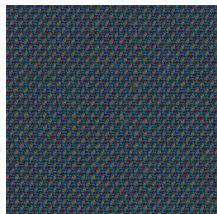
# Flip Chair

Available textiles

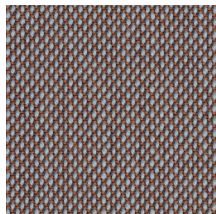
Version: 25-7-2025

**FABRIC CATEGORY 40**

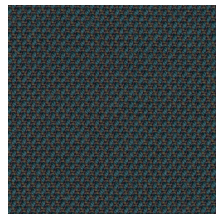
Steelcut Trio fabric  
0776



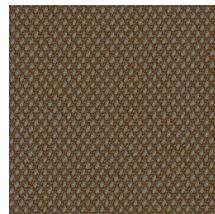
Steelcut Trio fabric  
0883



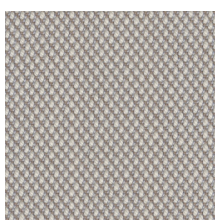
Steelcut Trio fabric  
0416



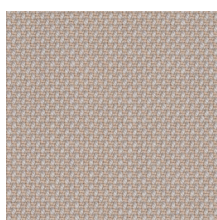
Steelcut Trio fabric  
0996



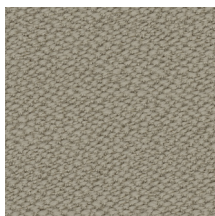
Steelcut Trio fabric  
0476



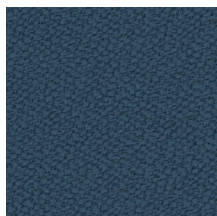
Steelcut Trio fabric  
0205



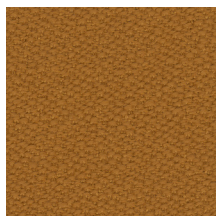
Steelcut Trio fabric  
0226

**FABRIC CATEGORY 50**

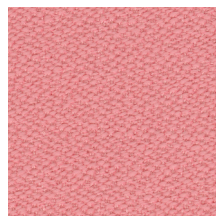
Vidar fabric  
0222



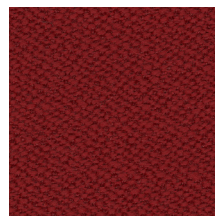
Vidar fabric  
0733



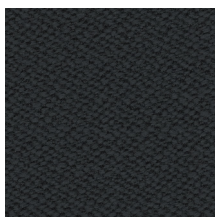
Vidar fabric  
0472



Vidar fabric  
0622



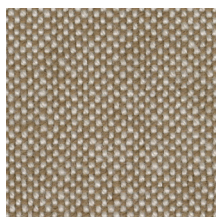
Vidar fabric  
0582



Vidar fabric  
0182



Hallingdal 65 fabric  
0694

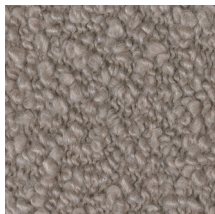


Hallingdal 65 fabric  
0220

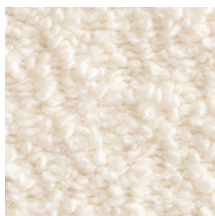
# Flip Chair

Available textiles

Version: 25-7-2025

**FABRIC CATEGORY 60**

Elle fabric  
0220

**FABRIC CATEGORY 70**

Nimbus fabric  
Col. 006

**FABRIC CATEGORY 80**

Karakorum fabric  
Col. 001



# Flip Chair

Available leathers

Version: 25-7-2025

## LEATHER CATEGORY 10



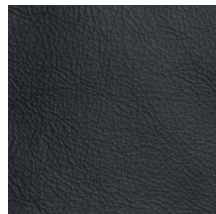
Dakar leather  
2732 Whisky



Dakar leather  
1436 Stone

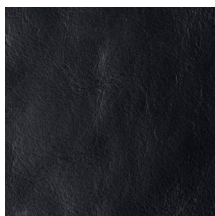


Dakar leather  
3411 Nature



Dakar leather  
0500 Black

## LEATHER CATEGORY 20



Silk leather  
SIL0842 Black



Silk leather  
SIL0250 Cognac



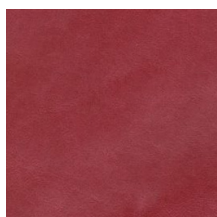
Silk leather  
SIL0854 Light Grey



Silk leather  
SIL0258 Nougat



Silk leather  
SIL0681 Dark Green



Silk leather  
SIL4009 Red