

# VL STUDIO TABLE/FLOOR LAMP

VL Studio Table/Floor Lamp - 5744167893

The fixture emits a glare-free diffused light. The triple-layered opal glass provides a very comfortable light distribution and radiates a pleasantly delicate glow to the surroundings.



## Vilhelm Lauritzen

Vilhelm Lauritzen (1894–1984) is one of the most significant architects in the history of Denmark; he was the trail-blazing figurehead of Danish functionalism. A number of his buildings – Nørrebro Theatre (1931–32), Dælls Varehus department store (1928–35), Radihuset (1936–41) and the first airport built in Kastrup (1937–39) – represented the concentrated essence of contemporary life.



## Product info

### Information

The untreated brass will change over time and develop a patina.

### Mounting

Glass can be unscrewed to change the light source. 2.5 m. Cord. Black for black version and white on brass versions. Ø150: On/off switch on cable. Ø250 and Ø320: Electronic dimmer on cable for regulation of light brightness (requires suitable light source).

### Finish

Matt black, wet painted or brushed brass with fine hairlines. White opal glass, glossy. Unlacquered brass which will develop a patina.

### Materials

Glass: Mouth-blown, 3-layered opal glass, glossy. Housing: Deep drawn aluminum or brass. Please note the untreated brass will patinate.

### Sizes and weights

width x Height x Length (mm) | 250 x 244 x 250 Max 3.8 kg | 320 x 310 x 320 Max 7.9 kg | 150 x 145 x 150 Max 1.3 kg

### Class

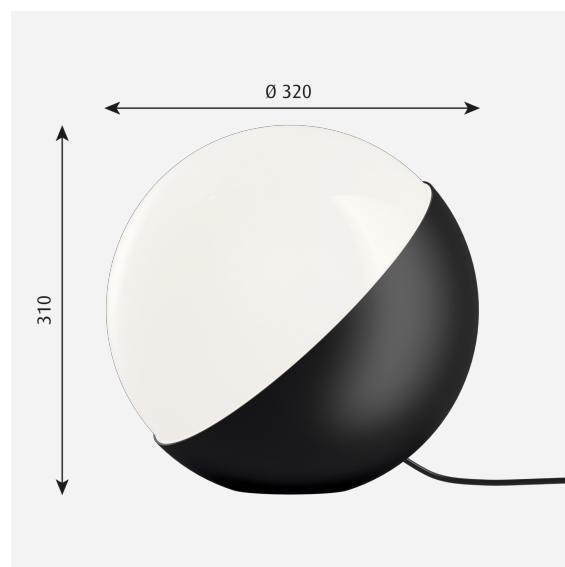
Ingress protection IP20. Electric shock protection II.

### Light source

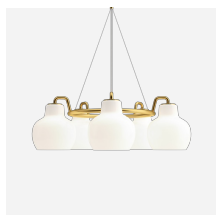
1x40W E27

### Information

The untreated brass will change over time and develop a patina.



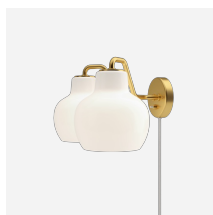
## Related products



VL Ring Crown 3-5-7 Pendant



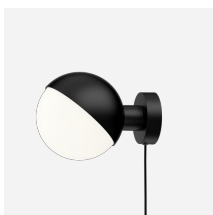
VL Ring Crown 1 Pendant



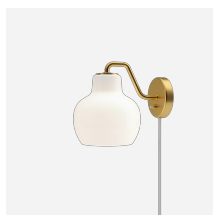
VL Ring Crown 2 Wall Lamp



VL 45 Radiohus Pendant



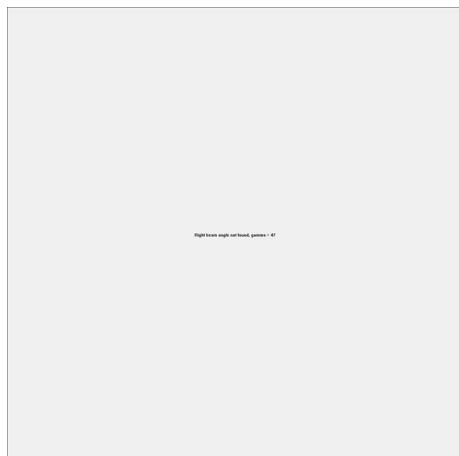
VL Studio Wall Lamp



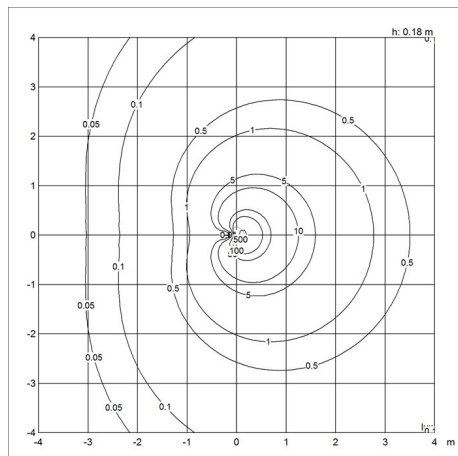
VL Ring Crown 1 Wall Lamp

# Light distribution diagrams

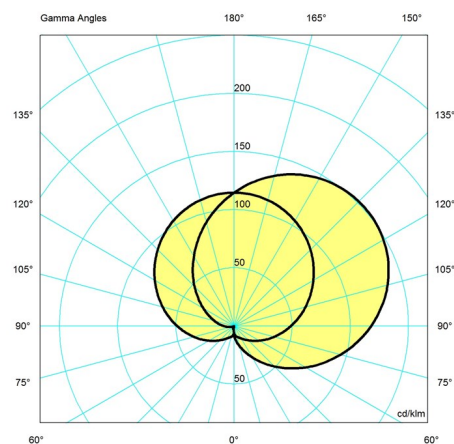
Cartesian



Isolux



Polar



## Spare parts & accessories

Product

VL Studio Ø320 Table glass  
VL Studio Table/Wall, White grommet  
VL Studio Ø150 Wall glass  
VL Studio Ø250 Table glass  
VL Studio Table/Wall, Black grommet

Variant number

5744167864  
5744167877  
5743151868  
5744167851  
5744167880

## Data specifications

Colour	Black (RAL RAL 9011 G: 30)
Width	320
Built-in Height	-
Class	II
Standby (W)	-
Inrush Current	-

Length	320
Height	310
IP class	20
Net Weight	6.7
Power Factor (P = 100 % / P = 50 %)	-
Light source	1x40W E27

## VL Studio Table/Floor Lamp

Kelvin	-
SDCM	-
Watt	12
Light control	-
UGR Transversal / Axial	< 0/10.9
Driver life	-

CRI	-
Lumen	767
Efficacy	64
Min. Dim Level (%)	-
L80B50 (hours)	-