

Comfortable multifunctional designs for stylish living in small spaces!

If you want to gain space in your room or your home - you are at the centre of our attention!

Our goal is to develop sofa beds that will expand your living space and make positive differences in your everyday life.

The One Room Living collection contains our most multifunctional and customizable designs.

- Find the sofa bed that fits your needs and personal style.
- Customize comfort by choosing the handmade mattress that fits your personal preferences.
- Finally decide the look of the sofa bed by your choice of fabric and mattress style.

Per Weiss
Creative Director



Socialize

A comfortable sofa when you have guests visiting



Relax

The 4 step head elevation will turn the sofa into a double lounger;
perfect for relaxed working, reading, gaming or watching tv



Take a nap

A very comfortable double lounge for power napping



Bed time in no time

Dress the sofa bed for sleeping and enjoy a good night's sleep on the comfortable handmade mattress



Mimer sofa bed
 Design by Per Weiss 2016
 Original Innovation Living / All rights reserved

Bed size: 140 x 200 cm / Functions: Bed with 4 step head elevation & sofa with 2 back positions / Arms: Upholstered / Legs: Lacquered oak / Frame: Matt black steel, 9 mm beech-wood slats / Bedding box: Included / Frame cover: Optional

Shown combination: Soft Spring mattress including back frame cover & optional seat frame cover in fabric 561 Twist Rust Red
 See our range of coffee tables, cushions & beanbags, page 46 - 49

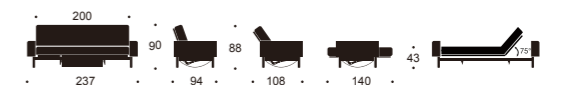
- Customize your Mimer sofa bed:**
- 01 Choose a mattress, see page 42
 - 02 Choose a mattress style / cover style, see page 44 & 45
 - 03 Choose a fabric, see page 50
 - 04 Choose cushions, see page 48



Bedding box included



Optional frame cover





Balder sofa bed
 Design by Oliver WeissKrogh & Per Weiss 2015
 Original Innovation Living / All rights reserved

Bed size: 140 x 200 cm / Functions: Bed with 4 step head elevation & sofa with 2 back positions / Arms: Lacquered oak / Frame: Matt black steel, 9 mm beech-wood slats / Bedding box: Included / Frame cover: Optional

Shown combination: Soft Spring mattress including back frame cover & optional seat frame cover in fabric 528 Mixed Dance Blue
 See our range of coffee tables, cushions & beanbags, page 46 - 49

Customize your Balder sofa bed:

- 01 Choose a mattress, see page 42
- 02 Choose a mattress style / cover style, see page 44 & 45
- 03 Choose a fabric, see page 50
- 04 Choose cushions, see page 48



Bedding box included



Optional frame cover





Aslak sofa bed
 Design by Oliver Weiss Krogh & Per Weiss 2014
 Original Innovation Living / All rights reserved

Bed size: 120 x 200 cm & 140 x 200 cm / Functions: Bed with 4 step head elevation & sofa with 2 back positions / Legs: Lacquered oak / Frame: Matt black steel, 9 mm beech-wood slats / Bedding box: Included / Frame cover: Optional for 140 x 200 cm / Seat frame cover: Optional for 120 x 200 cm & 140 x 200 cm

Shown combination: 140 x 200 cm / Soft Spring mattress including back frame cover & optional seat frame cover in fabric 525 Mixed Dance Light Blue
 See our range of coffee tables, cushions & beanbags, page 46 - 49

Customize your Aslak sofa bed:

- 01 Choose a mattress, see page 42
- 02 Choose a mattress style / cover style, see page 44 & 45
- 03 Choose a fabric, see page 50
- 04 Choose cushions, see page 48



Bedding box included



Optional frame cover





Colpus sofa bed

Design by Per Weiss 2013
Original Innovation Living / All rights reserved

Bed size: 140 x 200 cm / Functions: Bed with 4 step head elevation & sofa with 2 back positions / Legs: Styletto light wood / Frame: Matt black steel, 9 mm beech-wood slats / Bedding box: Included / Frame cover: Optional

Shown combination: Spring Round mattress style & frame cover in fabric 537 Coastal Sandstone

See our range of coffee tables, cushions & beanbags, page 46 - 49

Customize your Colpus sofa bed:

- 01 Choose a mattress, see page 42
- 02 Choose a mattress style / cover style, see page 44 & 45
- 03 Choose a fabric, see page 50
- 04 Choose cushions, see page 48



Bedding box included



Optional frame cover





Vidar sofa bed
 Design by Per Weiss 2014
 Original Innovation Living / All rights reserved

Bed size: 140 x 200 cm / Functions: Bed with 4 step head elevation & sofa with 2 back positions / Legs: Stem light wood / Frame: Matt black steel, 9 mm beech-wood slats / Bedding box: Included / Frame cover: Optional

Shown combination: Spring mattress / Sharp cover style & frame cover in fabric 557 Soft Coral
 See our range of coffee tables, cushions & beanbags, page 46 - 49

Customize your Vidar sofa bed:

- 01 Choose a mattress, see page 42
- 02 Choose a mattress style / cover style, see page 44 & 45
- 03 Choose a fabric, see page 50
- 04 Choose cushions, see page 48



Bedding box included



Optional frame cover





Frigga sofa bed
 Design by Per Weiss 2015
 Original Innovation Living / All rights reserved

Bed size: 140 x 200 cm / Functions: Bed with 4 step head elevation & sofa with 2 back positions / Legs: Baton in brass plated steel / Frame: Matt black steel, 9 mm beech-wood slats / Bedding box: Included / Frame cover: Optional

Shown combination: Latex mattress / Sharp cover style & frame cover in fabric 527 Mixed Dance Natural

See our range of coffee tables, cushions & beanbags, page 46 - 49

Customize your Frigga sofa bed:

- 01 Choose a mattress, see page 42
- 02 Choose a mattress style / cover style, see page 44 & 45
- 03 Choose a fabric, see page 50
- 04 Choose cushions, see page 48



Bedding box included



Optional frame cover





Minimum sofa bed
 Design by Peter Henriksen & Per Weiss 2003
 Original Innovation Living / All rights reserved

Bed size: 140 x 200 cm / Functions: Bed with 4 step head elevation & sofa with 2 back positions / Legs: Chrome / Frame: Matt black steel, 9 mm beech-wood slats / Bedding box: Included / Frame cover: Optional

Shown combination: Spring Round mattress style & frame cover in fabric 534 Coastal Seal Grey
 See our range of coffee tables, cushions & beanbags, page 46 - 49

Customize your Minimum sofa bed:

- 01 Choose a mattress, see page 42
- 02 Choose a mattress style / cover style, see page 44 & 45
- 03 Choose a fabric, see page 50
- 04 Choose cushions, see page 48



Bedding box included



Optional frame cover





Fraction sofa bed
 Design by Per Weiss 2008
 Original Innovation Living / All rights reserved

Bed size: 120 x 200 cm & 140 x 200 cm / Functions: Bed with 4 step head elevation & sofa with 2 back positions / Legs: Matt black steel / Frame: Matt black steel, 9 mm beech-wood slats / Bedding box: Included / Frame cover: Optional for 140 x 200 cm / Seat frame cover: Optional for 120 x 200 cm & 140 x 200 cm

Shown combination: 120 x 200 cm / Soft Spring mattress including back frame cover & optional seat frame cover in fabric 565 Twist Granite
 See our range of coffee tables, cushions & beanbags, page 46 - 49

Customize your Fraction sofa bed:

- 01 Choose a mattress, see page 42
- 02 Choose a mattress style / cover style, see page 44 & 45
- 03 Choose a fabric, see page 50
- 04 Choose cushions, see page 48



Bedding box included



Optional frame cover

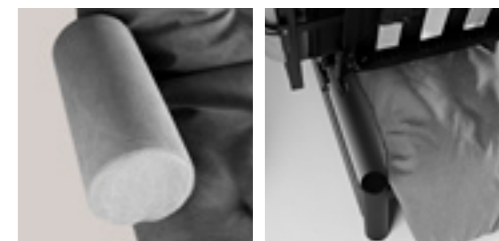




Fuji sofa bed
 Design by Flemming Højfeldt 1988
 Original Innovation Living / All rights reserved

Bed size: 120 x 200 cm & 140 x 200 cm / Functions: Bed, sofa with 2 back positions / Legs: Matt black steel / Frame: Matt black steel, 9 mm beech-wood slats / Zap arms: Optional / Bedding box: Included
Shown combination: 140 x 200 cm / Classic Round mattress style & Zap arms in fabric 554 Soft Mustard Flower
 See our range of coffee tables, cushions & beanbags, page 46 - 49

Customize your Fuji sofa bed:
 01 Choose a mattress style / cover style, see page 44
 02 Choose a fabric, see page 50
 03 Choose cushions, see page 48



Zap arms optional

Bedding box included





Skater sofa bed
 Design by Per Weiss 2004
 Original Innovation Living / All rights reserved

Bed size: 140 x 200 cm / Functions: Sofa, bed with 10 step head elevation /
 Legs: Chrome / Frame: Matt black steel, 9 mm beech-wood slats / Zap arms: Optional /
 Bedding box: Included

Shown combination: Classic Skater mattress / Sharp cover style in fabric 564 Twist Black
 See our range of coffee tables, cushions & beanbags, page 46 - 49

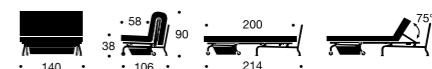
Customize your Skater sofa bed:
 01 Choose a mattress style / cover style, see page 44
 02 Choose a fabric, see page 50
 03 Choose cushions, see page 48

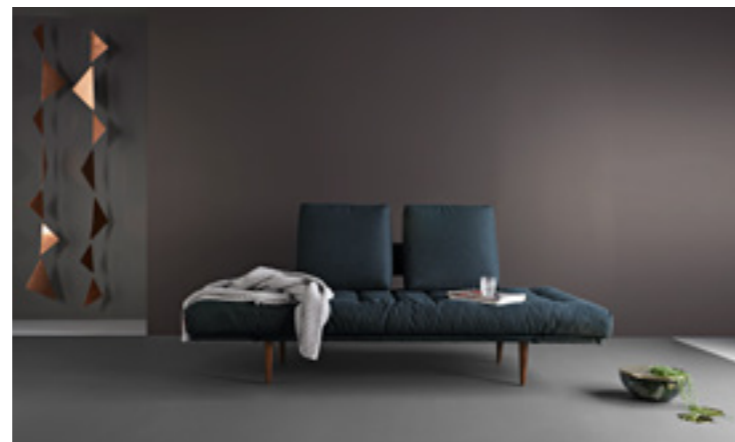


Zap arms optional



Bedding box included





Rollo daybed

Design by Flemming Højfeldt & Per Weiss 1993
Original Innovation Living / All rights reserved

Bed size: 80 x 200 cm / Functions: Bed & sofa with 3 step head elevation in both ends /
Optional legs: Baton, Stem, Dark Styletto, Bow, Rind & Hairpin / Frame: Matt black steel,
9 mm beech-wood slats / Back roll cushion: Included / Frame cover: Optional / Square
cushions: Optional / Bedding box: Optional

Shown combination: Rollo Styletto / Rollo Spring mattress with bolster & frame cover in
fabric 515 Nist Blue / Square cushions in fabric 515 Nist Blue / Styletto legs in dark wood
See our range of coffee tables, cushions & beanbags, page 46 - 49

Customize your Rollo sofa bed:

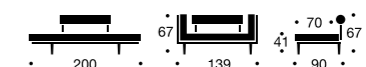
- 01 Choose a mattress, see page 42
- 02 Choose a mattress style / cover style, see page 44 & 45
- 03 Choose a fabric, see page 50
- 04 Choose cushions, see page 48



Optional frame cover

Optional cushions

Optional bedding box





Shown combination, page 30:

Rollo Bow / Rollo Spring mattress with bolster & frame cover in fabric 521 Mixed Dance Grey / Square cushions in fabric 521 Mixed Dance Grey / Bow legs in lacquered oak



Shown combination, page 30:

Rollo Stem / Rollo Spring mattress with bolster & frame cover in fabric 562 Twist Dark Green / Square cushions in fabric 562 Twist Dark Green / Stem legs in light wood

Shown combination, page 30:

Rollo Rind / Rollo Spring mattress with bolster & frame cover in fabric 227 Flashtex Graphite / Square cushions in fabric 227 Flashtex Graphite / Rind legs in matt black metal

Shown combination, page 31:

Rollo Hairpin / Rollo Spring mattress with bolster / Round cover in fabric 528 Mixed Dance Blue / Frame cover & Square cushions in fabric 528 Mixed Dance Blue / Hairpin legs in matt black metal

Shown combination, page 31:

Rollo Baton / Rollo Spring mattress with bolster & frame cover in fabric 543 Velvet Slate Grey / Square cushions in fabric 543 Velvet Slate Grey / Baton legs in brass plated steel



Vili daybed
 Design by Per Weiss 2015
 Original Innovation Living / All rights reserved

Bed size: 80 x 200 cm / Optional legs: Baton, Stem, Dark Styletto, Bow, Rind & Hairpin / Frame: Matt black steel, 9 mm beech-wood slats / Frame cover: Included
 See our range of coffee tables, cushions & beanbags, page 46 - 49

Customize your Vili sofa bed:
 01 Choose a mattress, see page 42
 02 Choose a mattress style / cover style, see page 44 & 45
 03 Choose a fabric, see page 50
 04 Choose cushions, see page 48



Shown combination, page 32:
 Vili Stem / Vili Spring mattress with frame cover in fabric 535 Coastal Nordic Sky / Stem legs in light wood

Shown combination, page 32:
 Vili Bow / Vili Spring mattress with frame cover in fabric 537 Coastal Sandstone / Bow legs in lacquered oak

Shown combination, page 32:
 Vili Styletto / Vili Spring mattress with frame cover in fabric 536 Coastal Slate Brown / Styletto legs in dark wood

Shown combination, page 32:
 Vili Hairpin / Vili Spring mattress / Round cover & frame cover in fabric 534 Coastal Seal Grey / Hairpin legs in matt black metal

Shown combination page 33:
 Vili Baton / Vili Spring mattress with frame cover in fabric 533 Coastal Dark Shadow / Baton legs in brass plated steel



Design profile

One Room living means casual living - cozy, relaxed functional elegance, designed for the wear and tear of everyday life.

The One Room Living concept has been designed to provide you with a series of modular elements that enables you to create the design and comfort that reflects your personal taste and preferences.



30 years of Danish handmade quality comfort

The core of the One Room Living is an undivided and easy bendable mattress, which ensures a sofa bed with a comfortable and supportive surface for relaxing, sleeping and sitting.

Through the past 30 years, we have continually developed and refined our mattresses in order to improve its comfort and durability.

Every single mattress is handmade with great care and attention to quality and details at our factory in Denmark.



Layers of comfort

All our sofa bed frames are equipped with beech-wood slats. The combination of frame and a mattress fixed to the frame provides a dynamic and supportive comfort for sitting and sleeping.

Add an Inno topper to provide an even higher comfort during the night and protect the cover at the same time.



Durability & environmental care

A One Room Living sofa bed is designed to last forever.

The conceptual design idea of One Room Living not only allows you to customize your sofa, the knock down design of the frames also ensures that all parts of the sofa bed can be maintained as years go by. Worn out frame parts can be replaced, mattresses and covers can be renewed.

We take great pride in our high quality standards and durability and provide a **lifetime warranty** on both slats and gears on all models. Our Customer Service will be happy to help you.

Should you decide to part from your One Room Living sofa bed, disassembly and recycling of all parts is possible.

The handmade mattresses

Classic

A comfortable, classic mattress with three layers of breathable, carded cotton on top of a 8 cm freon-free polyether foam core with one layer of carded cotton underneath. The cotton core is environmentally friendly as our production facilities make it possible for us to use our excess foam in our mattresses.

Firmness rating: Firm

Please note: Classic Skater mattress is only available for the Skater frame



Latex

A fusion mattress with a 12 cm high-resilient latex core surrounded by a layer of breathable, carded cotton. A supple natural mattress of high quality and longevity that adjusts to your body.

Firmness rating: Medium

Please note: Only available for mattress size 140 x 200 cm



Spring

A fusion mattress with 12 cm pocket spring surrounded by two layers of breathable, carded cotton on top and one layer of carded cotton underneath. A high resilient luxury mattress of high quality and longevity.

Firmness rating: Soft

Please note: Mattress sizes: 80 x 200 & 120 x 200 cm have a 9 cm pocket spring



Soft Spring

Soft Spring mattress is an 18 cm extra soft spring mattress. The special combination of a core of 10 cm membrane-bounded pocket spring surrounded by 5 cm of hyper soft foam on top, and 3 cm compact foam at the bottom, makes it high resilient.

Please note: 140 x 200 cm is available for Aslak, Balder, Colpus, Fraction, Frigga, Mimer, Minimum & Vidar.

Please note: The height of the Soft Spring mattress in 80 x 200 cm & 120 x 200 cm is 16 cm with a core of 8 cm. 80 x 200 cm is available for Vili & Rollo & 120 x 200 cm is available for Aslak & Fraction.

Firmness rating: Extra soft

Please note: Detachable Soft Spring cover is available for all Soft Spring mattresses (80 x 200 cm, 120 x 200 cm & 140 x 200 cm). For more information, see page 45



Inno toppers

Choose a top mattress to add extra sleeping comfort and protect your sofa bed



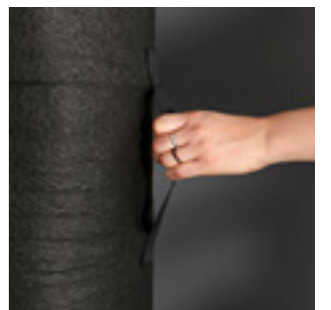
Available in three sizes: 120 / 140 / 160 x 200 cm

A 5 cm durable and reversible top mattress, with a core of 25 kg polyeter foam that will give an even and supportive sleeping surface on all adjustable sofa beds. Cover is 100% polyester which is breathable, removable and machine-washable at 60 degrees Celsius.



Storage bag

The Inno topper comes with a bag for storage when not in use. The bag helps minimizing the volume of the topper for better storage.



Mattress & cover styles for Classic, Spring & Latex mattresses

The handmade Round mattress

Non-detachable cover styling is available for Classic, Spring and Latex mattresses.

The cover is the bolster of the Round mattress and attached to the mattress with bindings that create the classic Japanese mattress look.

The Round mattress is available in all fabrics.
For more information, see page 50 or visit www.innovationliving.com.



Mattress & cover styles for Soft Spring mattress

The handmade Soft Spring mattress

Available for Aslak, Balder, Colpus, Fraction, Frigga, Mimer, Minimum, Vidar, Vili & Rollo.

The cover is the bolster of the Soft Spring mattress and attached to the mattress with bindings.

Please note: For mattress sizes in 120 x 200 cm & 140 x 200 cm, the back frame cover is always included. For Vili Soft Spring 80 x 200 cm the frame cover is included.

The Soft Spring mattress is available in all fabrics.
For more information, see page 50 or visit www.innovationliving.com.



Detachable covers

The Round cover

Detachable cover styling is available for the Classic, Spring and Latex mattresses.

The Round cover will add a sleek and soft look to your mattress. The cover is easily detached and can be dry cleaned. Refresh your sofa bed by adding a new cover whenever you want to.

The Round cover is available in all fabrics.
For more information, see page 50 or visit www.innovationliving.com.



Detachable cover

The Soft Spring cover

Detachable cover styling is available for the Soft Spring mattress in all sizes (80 x 200 cm, 120 x 200 cm & 140 x 200 cm).

The Soft Spring cover will add a sleek and soft look to your mattress. The cover is easily detached and can be dry cleaned. Refresh your sofa bed by adding a new cover whenever you want to.

Please note: For mattress sizes in 120 x 200 cm & 140 x 200 cm, the back frame cover is always included. For Vili Soft Spring 80 x 200 cm the frame cover is included.

The Soft Spring mattress is available in all fabrics.
For more information, see page 50 or visit www.innovationliving.com.



The Sharp cover

Detachable cover styling is available for the Classic, Spring and Latex mattresses.

Refresh your sofa bed by adding a new cover whenever you want to.

The Sharp cover is available in all fabrics.
For more information, see page 50 or visit www.innovationliving.com.



Tables

Stylo Tables

Design by Per Weiss 2016
Original Innovation Living / All rights reserved

Table top: Black stained oak veneer / Legs Styletto dark wood

Large: Top in Ø 70 cm / Legs 40 cm
Middle: Top in Ø 45 cm / Legs 32,5 cm
Small: Top in Ø 35 cm / Legs 32,5 cm



Nordic Tables

Design by Per Weiss 2016
Original Innovation Living / All rights reserved

Table top: Lacquered oak veneer or black stained oak veneer / Legs in lacquered oak

Large: Top in lacquered oak veneer Ø 70 cm / Legs 40 cm
Top in black stained oak veneer Ø 70 cm / Legs 40 cm
Middle: Top in lacquered oak veneer Ø 45 cm / Legs 32.5 cm
Top in black stained oak veneer Ø 45 cm / Legs 32,5 cm
Small: Top in lacquered oak veneer Ø 35 cm / Legs 32,5 cm
Top in black stained oak veneer Ø 35 cm / Legs 32,5 cm



Grids Tables

Design by Per Weiss 2008
Original Innovation Living / All rights reserved

Table top: Lacquered oak veneer or black stained oak veneer / Legs in black steel

High: Top in lacquered oak veneer Ø 70 cm / Legs 40 cm
Top in black stained oak veneer Ø 70 cm / Legs 40 cm
Middle: Top in lacquered oak veneer Ø 45 cm / Legs 32.5 cm
Top in black stained oak veneer Ø 45 cm / Legs 32,5 cm
Low: Top in lacquered oak veneer Ø 35 cm / Legs 25 cm
Top in black stained oak veneer Ø 35 cm / Legs 25 cm



Storage Tables

Design by Emil Højfeldt & Per Weiss 2016
Original Innovation Living / All rights reserved

Upholstered table: Ø 77 cm & H: 43 cm / Storage: 110 litre /
Table top: Ø 70 cm, black stained oak veneer or lacquered oak veneer
The table has a movable table top and a large storage compartment /
Available in all fabrics, see page 50

All table tops are available separately and can be used as a tray

Cushions & beanbags



Dapper Cushions

Detachable cover / Size: 50 x 50 cm, 50 x 80 cm, 65 x 65 cm / Feather mix inside / Available in all fabrics, see page 50

Dapper Patch Cushions

Design by Per Weiss 2015 / Original Innovation Living / All rights reserved

Detachable cover / Size: 50 x 50, 65 x 65 or 50 x 80 cm / Feather mix inside / Only available as shown in the mix of the Twist fabrics 563, 564 & 565



Ellipse Cushions

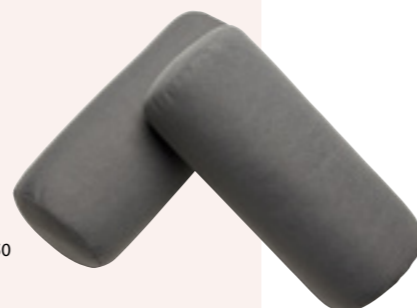
Design by Innovation Living Design Office / Original Innovation Living / All rights reserved

Detachable cover / Size: 55 x 25 x 13 cm / Cotton inside / Available in all fabrics, see page 50



Roll Cushions

Detachable cover / Size: Ø 25 x 55 cm / Cotton inside / Available in all fabrics, see page 50



Square Cushions

Design by Innovation Living Design Office / Original Innovation Living / All rights reserved

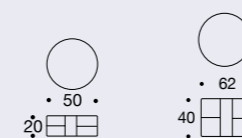
Detachable cover / Size: 50 x 50 x 11 cm / Cotton and freon-free foam inside / Available in all fabrics, see page 50



Deconstructed 50/20 & 62/40 Floor Cushion

Design by Jesper Elg 2000 / Original Innovation Living / All rights reserved / Size: Ø 50 x 20 cm or Ø 62 x 40 cm / Freon-free foam / Available in all fabrics, see page 50

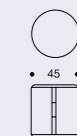
Table tops in black stained oak veneer or lacquered oak veneer - optional, see page 47



Butt Beanbag

Design by Jesper Elg 2002 / Original Innovation Living / All rights reserved / Detachable cover / Size: Ø 45-50 cm / Volume: Inside 100 litres EPS Beads / Available in all fabrics, see page 50

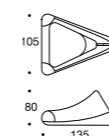
The detachable cover makes it possible to renew the beanbag / Can also be refilled!



Soft Peak Beanbag

Design by Innovation Living Design Office 2015 / Original Innovation Living / All rights reserved / Detachable cover / Size: 105-135-80 cm / Volume: Inside 300 litres EPS Beads / Available in all fabrics, see page 50

The detachable cover makes it possible to renew the beanbag / Can also be refilled!



Fabrics

Uni colour scale 1:1

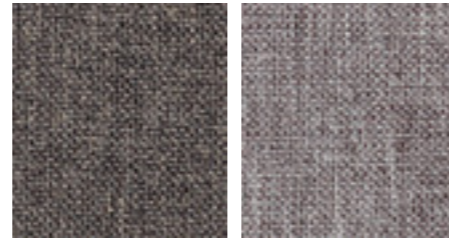
Please note that the printed presentation of the fabric texture and colours may vary from the actual fabric.

Cleaning advisory

Leather looks: Wipe with a moist cloth, do not dry clean.

All other fabrics: Dry clean only

Please visit innovationliving.help for further information



216
Flashtex_Dark Grey

217
Flashtex_Light Grey



227
Flashtex_Graphite

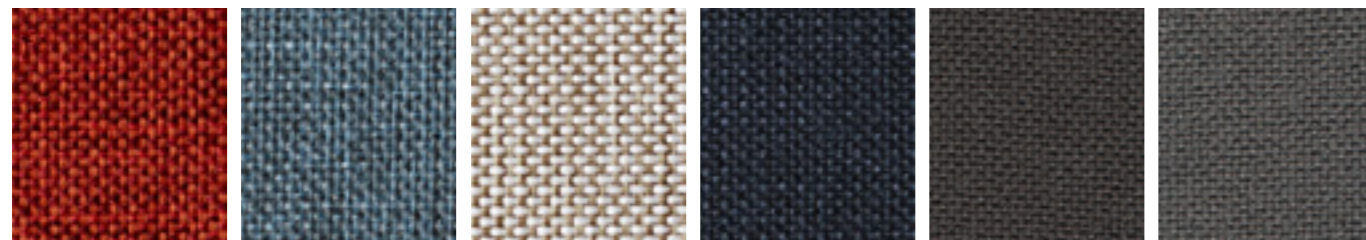
461
Leather Look_Brown Vintage

514
Nist_Black

515
Nist_Blue

521
Mixed Dance_Grey

523
Mixed Dance_Black/Brown



524
Mixed Dance_Burned Orange

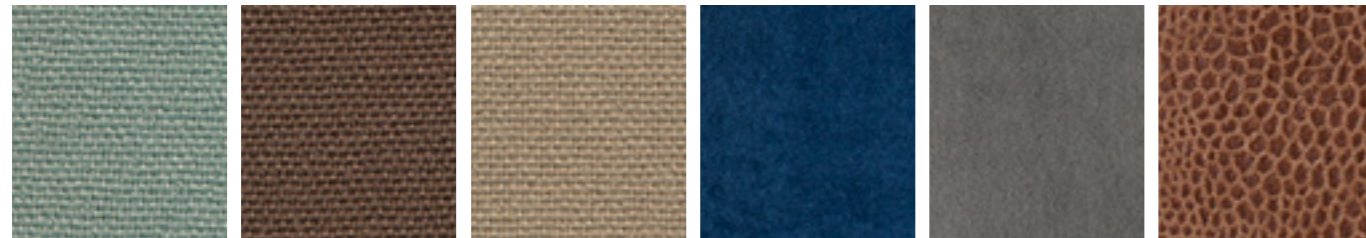
525
Mixed Dance_Light Blue

527
Mixed Dance_Natural

528
Mixed Dance_Blue

533
Coastal_Dark Shadow

534
Coastal_Seal Grey



535
Coastal_Nordic Sky

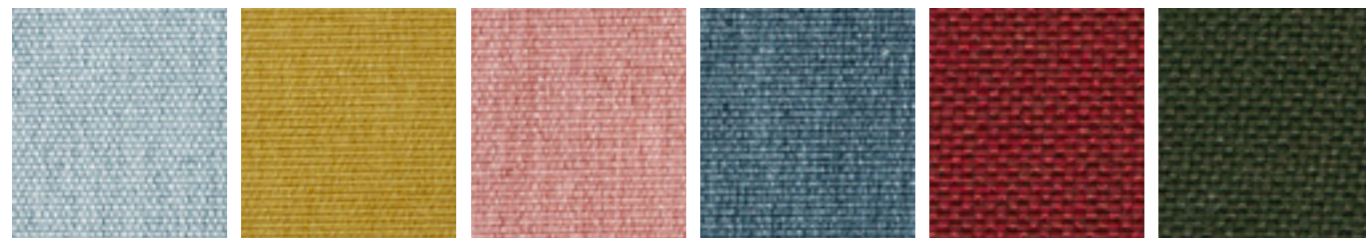
536
Coastal_Slate Brown

537
Coastal_Sandstone

542
Velvet_Royal Blue

543
Velvet_Slate Grey

551
Leather Look_Brown Faunal



552
Soft_Pacific Pearl

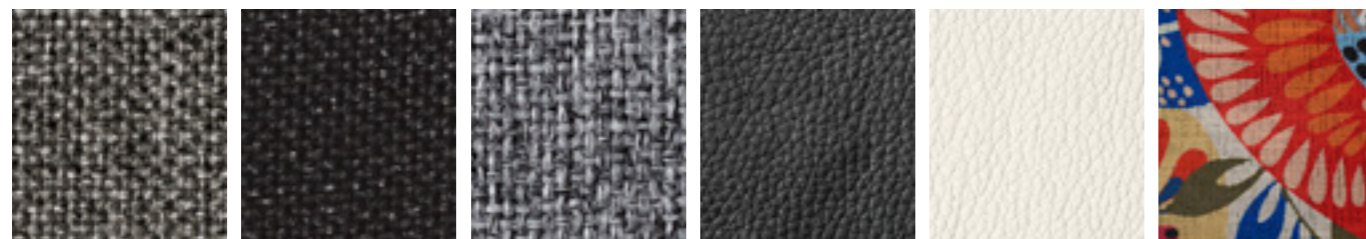
554
Soft_Mustard Flower

557
Soft_Coral

558
Soft_Indigo

561
Twist_Rust Red

562
Twist_Dark Green



563
Twist_Charcoal

564
Twist_Black

565
Twist_Granite

582
Leather Look_Black

588
Leather Look_White

680
Wild Flower_Tropical

Designers

Per Weiss

Creative Director

Innovation Living Design Office

Per Weiss was born in 1959 in Denmark and is the Director of Innovation Living Design Office International. As an all-round creative person, he started his career as a professional musician, while already studying at the School of Architecture in Aarhus. Then giving a higher priority to his design visions, he worked for some of the famous Danish architects, Friis & Moltke and Schmidt, Hammer & Lassen. In 1988 he graduated as an industrial designer. Since 1989 Per Weiss has been the head of Innovation Living Design Office and responsible for concept, product design and marketing. Per Weiss established a close relationship to Verner Panton during the development of the Phantom chair, Panto Beam, and Panto Pop in 1997-1998. Alongside his works for Innovation Living, Per Weiss cooperated with Danish designer Henrik Bønnelycke in their mutual company W&B design works 1997-2000. In 2001 he founded WeissDesignWorks, where he handles product designs that do not fit into the Innovation Living product range.



Flemming Højfeldt

Founder and owner of Innovation Living



Emil Højfeldt

Head of Product Development



Jesper Elg

Owner of V1 Gallery in Copenhagen



Peter Henriksen

Industrial Designer

To find your nearest retailer, please visit our website www.innovationliving.com

Follow us on

[instagram.com/innovationliving](https://www.instagram.com/innovationliving)

[facebook.com/innovationliving](https://www.facebook.com/innovationliving)

[linkedin.com/company/innovation-living](https://www.linkedin.com/company/innovation-living)

[pinterest.com/innovationtm](https://www.pinterest.com/innovationtm)

Thanks to AYTM

Produced by Innovation Living Design Office 2016

All rights reserved ©



Oliver & Lukas WeissKrogh

Studio WeissKrogh

**Expand
Your
Living Space**

www.innovationliving.com