

**The
Workplace.**
Redefined.



WORK

2

Disrupting the office space and re-imagining how we work.

Covid-19 has forced us to rethink many of our everyday functions, including how and where we work. This is our take on how you can create an inspiring and comfortable space that enables you to focus on work without compromising the feeling of home.

The Panton heritage.

Panton was a pioneer in terms of challenging the status quo. He was always experimenting with materials and new ways to approach product and spatial design.

His ability to bridge healthy ergonomics and purposeful functionality with imaginative and creative shapes was a constant in his experimental design process and still very much relevant today.

At Verpan, we continuously tap into this heritage when re-imagining products and solutions that help us solve modern challenges and rethink the ways we live, work and meet.

work-life
BALANCE

SPACES

4

The Verpan collection offers extraordinary user experiences and facilitate new ways of living, working and interacting.

Verpan products are all contract certified as standard and made using modern manufacturing methods ensuring compliance with international environmental standards.

Our track record include residential, restaurants, hotels, corporate, retail stores, education, airports and more.

Discover more
www.verpan.com

**1. Living/
Working**

**2. Small
Spaces**

**3. Shared
Spaces**



Flex chair / Move table / Hive pendant

Living/ Working

Creating spaces and solutions within the home that can accommodate both personal and professional needs is one of the challenges we currently face.

Choosing the right furniture and lighting is essential in making this behavioral change a success.

Long-term seating comfort, great ergonomics and personal style are all essential factors, but also factors such as cleaning, durability and long-term value play in when making safe and sustainable investments in your home.



Series 430 chair / Move table / VP Globe pendant



Series 430 chair / Move table





SERIES 430

Chair

by Verner Panton, 1967

WHY WE LOVE IT

Outstanding comfort
Understated elegance
Highly customizable
Super versatile
Easy to clean
Fully upholstered
Stackable

SUGGESTED APPLICATION

Learning
Care
Hospitality
Work
Residential

MATERIAL

FSC-approved wood for seat and back
Elastic band webbing in the seat
CMHR (CRIB 5) or HR (Cal 117) foam
Brushed stainless steel frame (steel)
Painted or plated metal frame (black, white, burgundy & brass)
Felt feet

DIMENSIONS

Height: 82 cm (32.3")
Seat: Ø46 cm (17.7")
Seat height: 47 cm (18.1")
Total depth: 51,5 cm (20.3")
Total width: 54 cm (21.3")
Weight: 6,3 kg.

STANDARD UPHOLSTERY OPTIONS

Kvadrat
Skai
JAB
Dedar
Sørensen Leather

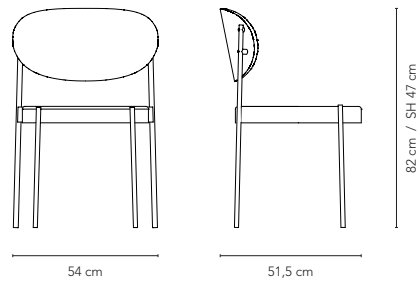
FRAME OPTIONS



MADE-TO-ORDER OPTIONS

Custom colour painted frame
COM upholstery
Linking

DETAILS





Series 430 chair / Move table / Barboy



Series 430 chair / Move table / Wire table lamp



FLEX

Chair

by Verner Panton, 1960

WHY WE LOVE IT

Sculptural organic aesthetics
Thoughtful ergonomics gives great seating comfort
Very versatile & stacks for easy storage
Made from 100% recyclable PP
Easy to disassemble for repair and ultimately disposal

SUGGESTED APPLICATION

Care
Learning
Work
Hospitality
Residential

MATERIAL

Polypropylene (PP) seat and backrest
Painted metal frame
Plastic gliders with felt feet

DIMENSIONS

Height: 89 cm (35")
Seat height: 46 cm (18.1")
Seat width: 42,8 cm (16.8")
Total depth: 53,5 cm (21")
Total width: 50,5 cm (19.9")
Weight: 7 kg.

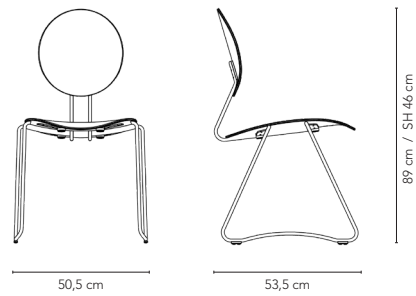
STANDARD COLOURS



MADE-TO-ORDER OPTIONS

Custom colour painted frame
Custom colour seat and backrest
Upholstered seat and back
Linking
Stacking cart

DETAILS





Flex chair / Move table / Moon pendant



Flex chair / Move table / Wire table lamp



SYSTEM 1-2-3

Dining Chair

by Verner Panton, 1973

WHY WE LOVE IT

Iconic Panton design
Outstanding comfort and great ergonomics
Base swivels for easy access
Fully upholstered
Statement piece

SUGGESTED APPLICATION

Learning
Care
Hospitality
Work
Residential

MATERIAL

Steel frame
VOSS foam
Brushed aluminium base or chrome plated butterfly base
Various upholstery options

DIMENSIONS

H: 86 cm (33.8")
D: 60 cm (23.6")
Seat width: 50 cm (19.6")
Seat depth: 36 cm (14.1")
Seat height front: 47 cm (18.5")
Seat height back: 44 cm (17.3")
Weight: 15 kg.

BASE COLOURS



STANDARD UPHOLSTERY OPTIONS

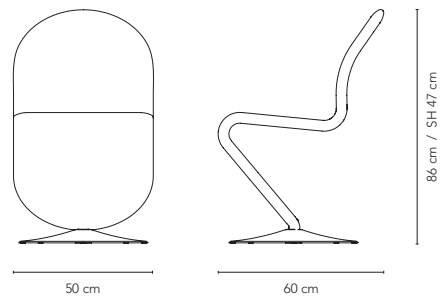
Kvadrat
Skai
JAB
Dedar
Sørensen Leather

MADE-TO-ORDER OPTIONS

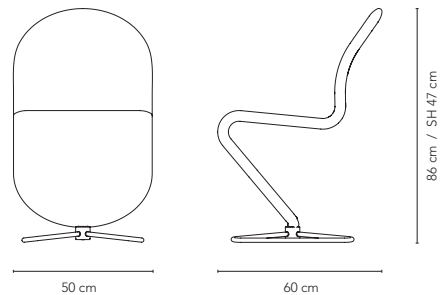
COM upholstery

VARIANTS

BRUSHED ALU BASE



CHROME BUTTERFLY BASE





System 1-2-3 Dining / Series 430 chair / Move table / Wire table lamp

MOVE

Table

by Verner Panton, 1972

WHY WE LOVE IT

Super versatile design
Lockable castors for mobility
FENIX nanotech laminate on the table top
Very easy to clean

SUGGESTED APPLICATION

Learning
Work
Hospitality
Residential

MATERIAL

Frame made of powder coated square steel tube
MDF table top with Fenix laminate
Mounted with lockable TENTE wheels

DIMENSIONS

Length: 200 cm (78.7")
Width: 95 cm (37.4")
Height: 76,5 cm (30.1")
Weight: 45 kg

COLOURS

TABLE TOP



Black



White

FRAME

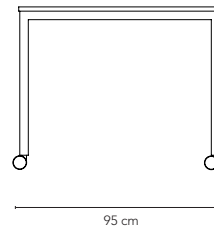
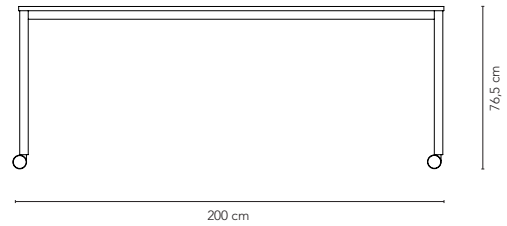


Black



White

DETAILS





Series 430 chair / Move table / Spiegel lamp





Series 430 stool / Barboy

Small Spaces

When space is limited you have to get creative in order to fit all of your essentials and create a comfortable space where productivity is not compromised.

Flexibility and multipurpose functionality is key to make small spaces work.

BARBOY

Storage

by Verner Panton, 1963

WHY WE LOVE IT

Mobile side table and storage unit
Fun and functional
Very versatile - works in many settings

SUGGESTED APPLICATION

Hospitality
Work
Residential

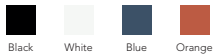
MATERIAL

Moulded painted wood
Chrome plated castors

DIMENSIONS

H: 72.5 cm (28.5")
Ø38 cm (15")
Weight: 24 kg.

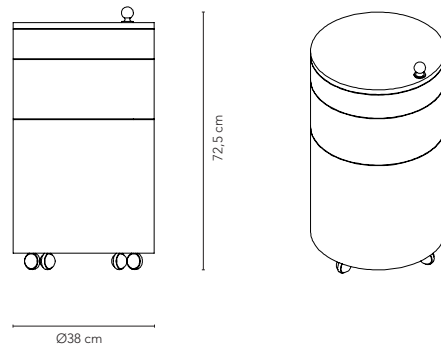
COLOURS



MADE-TO-ORDER OPTIONS

Available with TENTE castors

DETAILS





Barboy



Flex chair / Barboy / Moon pendant



Barboy

SERIES 430

Stool

by Verner Panton, 1967

WHY WE LOVE IT

Outstanding comfort
Understated elegance
Highly customizable
Super versatile
Fully upholstered

SUGGESTED APPLICATION

Learning
Care
Hospitality
Work
Residential

MATERIAL

FSC-approved wood for seat
Elastic band webbing in the seat
CMHR (CRIB 5) or HR (Cal 117) foam
Painted metal frame (black & white)
Felt feet

DIMENSIONS

Height: 47 cm (18.1")
Seat: Ø46 cm (17.7")
Weight: 4 kg.

STANDARD UPHOLSTERY OPTIONS

Kvadrat
Skai
JAB
Dedar
Sørensen Leather

FRAME OPTIONS



Black

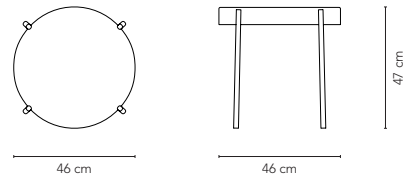


White

MADE-TO-ORDER OPTIONS

Custom colour painted frame
COM upholstery

DETAILS







Cloverleaf sofa (Bestseller HQ, Aarhus)

Shared Spaces

As we are forced to rethink how we plan and execute meetings and gatherings in shared spaces, we know that future requirements will include an added focus on social distancing measures, health and safety, hygiene and a high level of flexibility and adaptability.

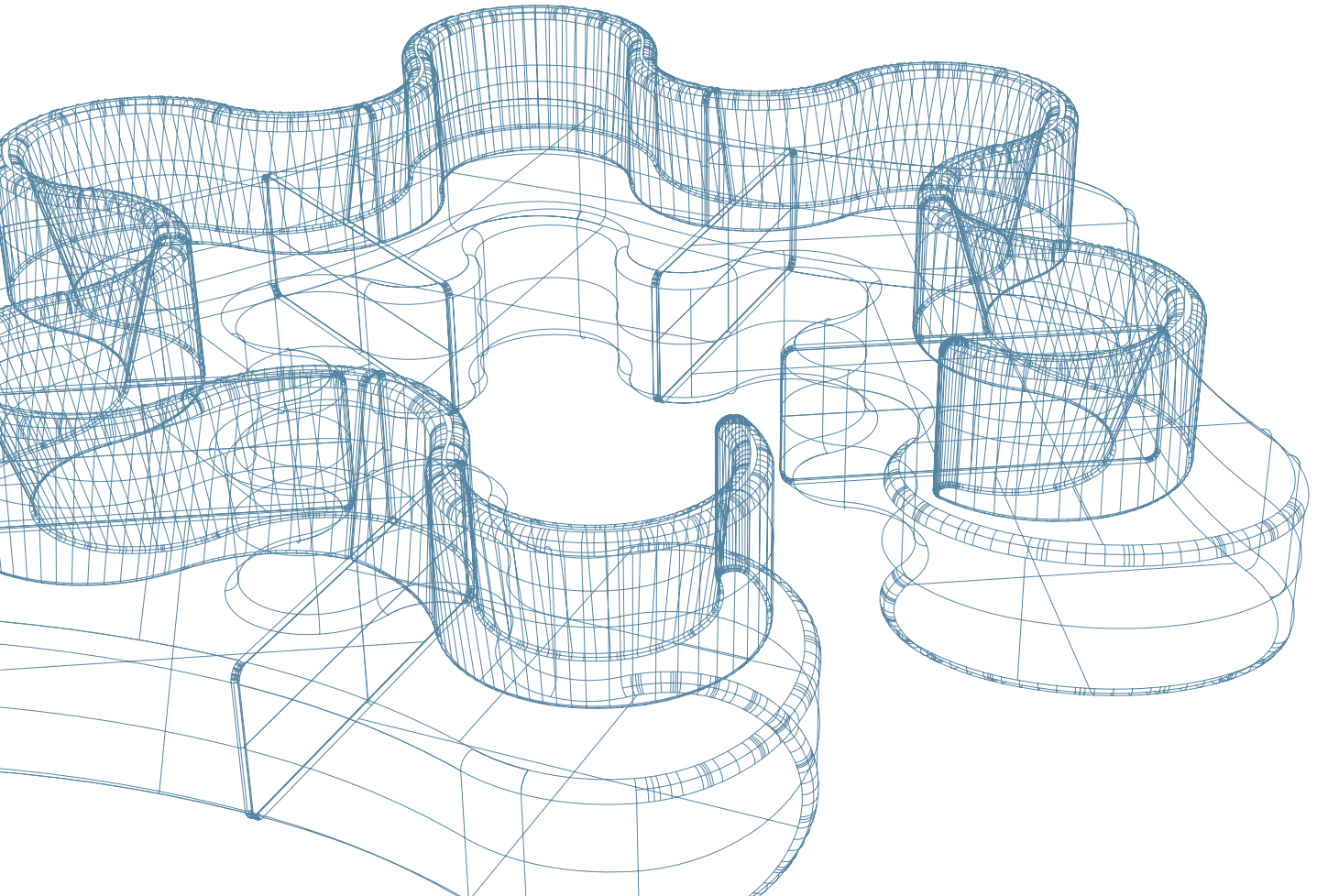
Meeting in smaller groups, meeting outside and creating new spatial infrastructures are possible first steps that are relatively easy to implement.



Cloverleaf sofa (Bestseller HQ, Aarhus)



CLOVER- LEAF



Cloverleaf Sofa

As good as it is for bringing people together, the Cloverleaf design can also – with a few clever touches – work as an effective tool for practicing safe social distancing.

With seating options on both sides and deep personal 'pockets' users can create their own space with safe distance to others limiting face-to-face interaction, effectively minimizing the risk of infection.

Upholstery

The upholstered Cloverleaf is available in a wide range of fabrics, including a selection of anti-bacterial vinyls that feature enhanced soil and stain resistance and antibacterial protection.

In- & Outdoor

The Cloverleaf In- & Outdoor version is made from 100% recyclable PE that is extremely durable, easy to clean and maintain. The Cloverleaf In- & Outdoor is FDA approved for use with food, UV and water resistant and can be placed both indoor and outdoor.

With the Cloverleaf In- & Outdoor, you have a great option to move work tasks outside - short meetings, phone calls etc. can all easily be performed outside.

Infrastructure

The modular nature of the Cloverleaf makes it a useful tool for disrupting the way we think and design spatial infrastructure.

Use it as a divider, transit zone, safe meeting space – the opportunities are endless.

Power

Both versions of the Cloverleaf sofa is available with integrated power outlet.

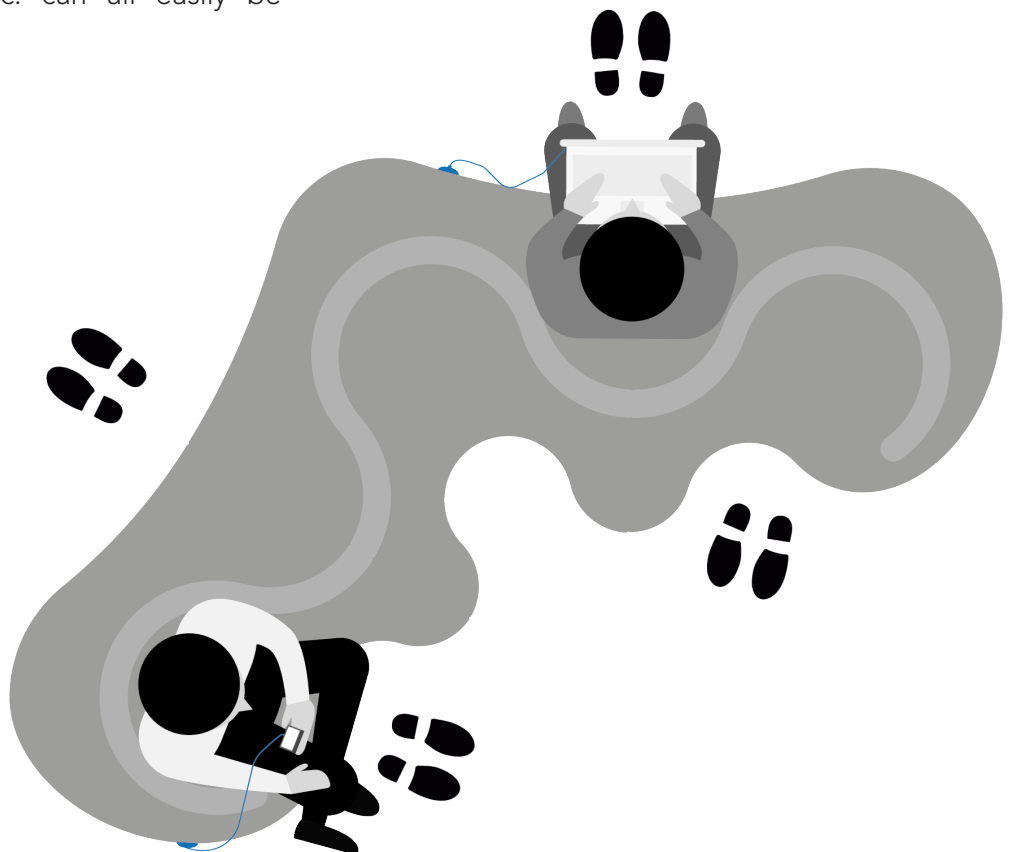
Nudging

Using clever nudging, by e.g. applying floor markings, you can easily guide users how to safely enjoy the Cloverleaf sofa.

A sound investment

With the Cloverleaf and Welle, you not only get super versatile, beautiful pieces of furniture, you also get original iconic Verner Panton designs.

The longevity of design allows you to plan beyond the current situation and look forward to a future with fewer restrictions.





The Cloverleaf In- & Outdoor integrated as part of the infrastructure of Danish Mall, Bruuns Galleri, Aarhus



Cloverleaf In- & Outdoor outside KPN Tower, Rotterdam



Corporate outdoor space, London (Project created by Day 2 Interiors Ltd & Lorenc Design Associates)

CLOVERLEAF

Sofa

by Verner Panton, 1969

WHY WE LOVE IT

Unique yet highly functional design
Great seating comfort and support
Infinite seating options
Modular and highly customizable
Great for high traffic areas

SUGGESTED APPLICATION

Airport
Care
Learning
Work
Hospitality

MATERIAL

FSC-approved wood frame (18 mm/0.7" plywood & pine wood)
CMHR (CRIB 5) or HR (Cal 117) foam for seat and backrest
Metal interlockers
Adjustable nylon glides

40

DIMENSIONS

LEFT AND RIGHT UNIT

L: 114.5 cm (45.1")
W: 115.5 cm (45.3")
H: 80 cm (31.5")
Seat height: 40 cm (15.7")
Weight: 112 kg.

EXTENSION UNIT

L: 130 cm (51.2")
W: 113 cm (44.5")
H: 80 cm (31.5")
Seat height: 40 cm (15.7")
Weight: 135 kg.

MIDDLE UNIT

L: 142 cm (55.9")
W: 158 cm (62.2")
H: 80 cm (31.5")
Seat height: 40 cm (15.7")
Weight: 142 kg.

STANDARD UPHOLSTERY OPTIONS

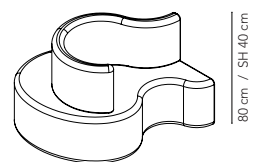
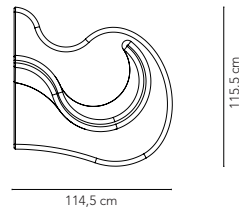
Kvadrat
Skai
JAB
Dedar
Sørensen Leather

MADE-TO-ORDER OPTIONS

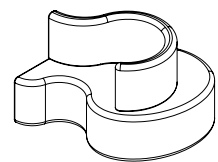
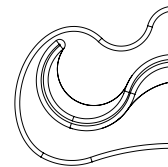
Integrated power/charging station
COM upholstery
Plinth

UNITS

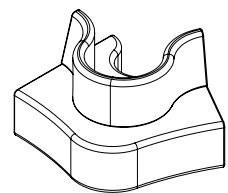
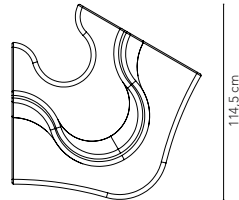
LEFT



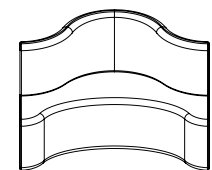
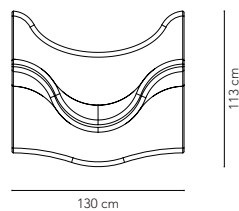
RIGHT



MIDDLE



EXTENSION





CLOVERLEAF

In- & Outdoor

by Verner Panton, 1969

WHY WE LOVE IT

100% recyclable material
Works equally great indoors and outdoors
Infinite seating options
Modular and highly customizable
Extremely durable
Easy to clean and maintain

SUGGESTED APPLICATION

Outdoor
Care
Learning
Work
Hospitality

MATERIAL

100% recyclable rotational molded PE polyethylen.

DIMENSIONS

42

LEFT AND RIGHT UNIT

L: 114.5 cm (45.1")
W: 115.5 cm (45.3")
H: 80 cm (31.5")
Seat height: 40 cm (15.7")
Weight: 40 kg.

EXTENSION UNIT

L: 130 cm (51.2")
W: 113 cm (44.5")
H: 80 cm (31.5")
Seat height: 40 cm (15.7")
Weight: 47 kg.

MIDDLE UNIT

L: 142 cm (55.9")
W: 158 cm (62.2")
H: 80 cm (31.5")
Seat height: 40 cm (15.7")
Weight: 51 kg.

STANDARD COLOURS

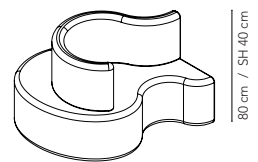
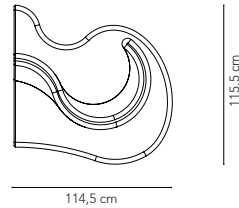


MADE-TO-ORDER OPTIONS

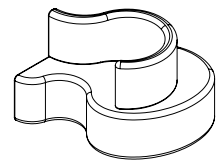
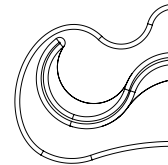
Integrated power/charging station
Custom RAL colours
Plinth (indoor use only)

UNITS

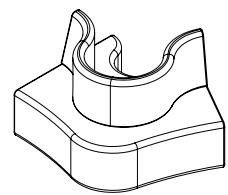
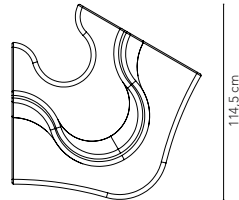
LEFT



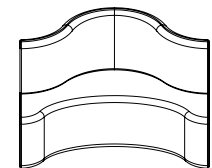
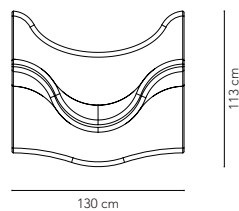
RIGHT



MIDDLE



EXTENSION



Reference: KPN Tower / Rotterdam
Product: Cloverleaf In- & Outdoor (5-unit)
Colour: Standard white
Photo credit: Annette Prinssen





44

Versatile, mobile if you want it to be and comfortable individual seating for short stops, breaks, creative meetings or as active parts of your office infrastructure, the Welle lounge furniture enable you to explore your creativity to the fullest. Create a landscape or use the units as single pieces – the options are endless.

Upholstery

Welle can be delivered in a wide range of fabrics, including a selection of anti-bacterial vinyl that feature enhanced soil and stain resistance and antibacterial protection.

Power

Welle can be delivered with integrated power outlet.



Welle 3 at Seattle-Tacoma Airport, Seattle

45



Welle landscape at Egaa Gymnasium, Aarhus

WELLE

Lounge Chairs

by Verner Panton, 1969

WHY WE LOVE IT

Very versatile - use as single piece or create your own landscape
Fun & organic design
Highly comfortable
Great for social interaction

SUGGESTED APPLICATION

Care
Learning
Work
Hospitality
Residential

MATERIAL

FSC-approved wood frame (15 mm/0.6" plywood)
CMHR (CRIB 5) or HR (Cal 117) foam

DIMENSIONS

WELLE 1

L: 162 cm (63.8")
H: 102 cm (40.2")
W: 50 cm (19.7")
Weight: 26,5 kg.

WELLE 4

L: 140 cm (55.1")
H: 63 cm (24.8")
W: 50 cm (19.7")
Weight: 16 kg.

WELLE 2

L: 108 cm (42.5")
H: 80 cm (31.5")
W: 50 cm (19.7")
Weight: 17,5 kg.

WELLE 5

L: 108 cm (42.5")
H: 40 cm (15.7")
W: 50 cm (19.7")
Weight: 12 kg.

WELLE 3

L: 240 cm (94.5")
H: 70 cm (31.5")
W: 50 cm (19.7")
Weight: 33 kg.

WELLE 6

L: 54 cm (21.3")
H: 40 cm (15.7")
W: 50 cm (19.7")
Weight: 5,5 kg.

STANDARD UPHOLSTERY OPTIONS

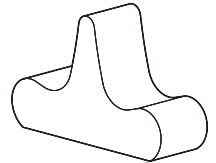
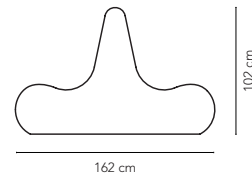
Kvadrat
Skai
JAB
Dedar
Sørensen Leather

MADE-TO-ORDER OPTIONS

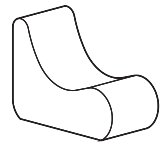
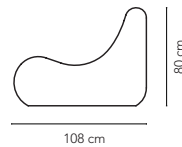
Integrated power/charging station
COM upholstery
Plinth

UNITS

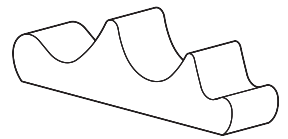
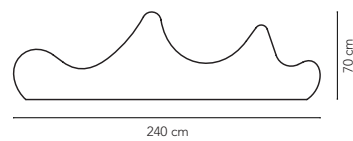
Welle 1



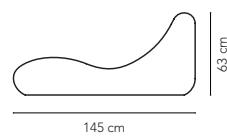
Welle 2



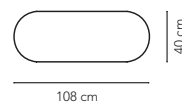
Welle 3



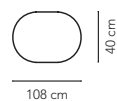
Welle 4



Welle 5



Welle 6





Reference: Egaa Gymnasium / Aarhus
 Product: Welle 1, 3 & 6
 Upholstery: Tonus 4 440 / Kvadrat

SUSTAIN- ABILITY

At Verpan we care about our social and environmental responsibilities.

We offer timeless design of high quality with long product life. Pantón's work continues to represent a high value, making a great case for resale or donation of product at end-of-use.

We introduce recyclable materials when possible and strive to develop products for easy assembly and disassembly - making it possible to replace and ultimately dispose damaged parts properly.

We work closely with our suppliers and logistics partners to ensure optimal production methods and minimize shipping and packaging.



Recyclable.

The Cloverleaf In- & Outdoor Sofa is a great example of how our efforts materialize in real life. The sofa is extremely durable and made from 100% recyclable rotational molded PE polyethylen, meaning that at end-of-life, the material can be granulated and reused.

The sofa is modular and damaged parts can easily be replaced and ultimately disposed of properly.

49



Construction.

In addition to the seat and back being manufactured in 100% recyclable polypropylene (PP), the Flex chair is assembled with standard screws, making it possible to disassemble the chair to replace parts and extend the product's lifecycle and ultimately dispose of parts in an environmentally friendly manner.



www.verpan.com