

# 101

C O P E N H A G E N





## ABOUT 101 COPENHAGEN

101 Copenhagen is a Danish design brand founded in 2017. With a vision to honor exquisite quality and craftsmanship, the collection encompasses furniture, lighting and accessories in a timeless, yet modern design. With a true passion for materials and refined textures, organic shapes and colours, 101 Copenhagen presents the epitome of classics and must-have novelties for Scandinavian and international interior connoisseurs alike.

## OUR CREATIVE DRIVE

The design of 101 Copenhagen is firmly rooted in the Scandinavian soil and nourished by Japanese minimalist aesthetics. Sharing an emphasis on quality materials, techniques and traditions, the meeting between the North and the East is notable in the holistic collections of 101 Copenhagen. The design approach is dynamic and characterised by freedom of expression - creating unique and timeless pieces without compromising on playfulness and individuality.

## OUR DESIGN TEAM

An attention to detail and a shared sense of aesthetics is what drives the two main designers of 101 Copenhagen, Tommy Hyl Dahl and Kristian Sofus Hansen. Merging their backgrounds and experiences from the fashion industry, the Royal Danish Academy of Fine Arts and travels in Japan respectively, a narrative of minimalist, sculptural and conceptual design is evident throughout the collections. Translating and transforming the simplistic inspiration from Japan in a Scandinavian context is all about honouring quality, heritage and materiality while never ceasing to compromise on form and function. Trained as an architect, the third designer, Nicolaj Nøddesbo, adds knowledge on innovative light solutions and timeless novelties to the 101 Copenhagen collections. 101 Copenhagen is a curated selection of tactile, bold objects standing out in a crowd and gathers as a whole.



### Tommy Hyldahl, owner and main designer

---

With a background in fashion having spent years forecasting and analyzing future trends, Tommy Hyldahl has a natural attention to detail in materials, historical references and original design concepts. Similar to the process in fashion, the design at 101 Copenhagen begins with an idea that evolves and develops into a full layered narrative of each collection.



### Kristian Sofus Hansen, main designer

---

With a background from the Royal Danish Academy of Fine Arts and having spent time living and studying in Japan, Kristian Sofus Hansen brings aesthetics and simplicity to the Danish design heritage and knows how to translate and transform these little signature details into the collection of 101 Copenhagen. Mainly designing sculptures and objects, it is a never ending source of inspiration for Hansen, whose aim is to create characteristic and functional design to remember.



### Nicolaj Nøddesbo, designer

---

With a background from the Aarhus School of Architecture, Nicolaj Nøddesbo is developing innovative light solutions and timeless novelties for the 101 Copenhagen collection. Since joining the team in 2017, his mission has been to add personality and character to functional pieces, focusing on materiality, tactility and a sense of spatiality when creating minimalistic and sculptural design items.



# PLANT POTS

Expanding into the world of plant pots, the Arket and Urchin collections offers a variety of fiber concrete pots in different shapes and sizes for both indoor and outdoor use.

Arket and Urchin collections comes in four sizes, offering large pots for indoor trees in the living room, petit size pots for a small collection of herbs on the kitchen counter and everything in between. The pots can also be used outdoor to gather your favorite plants and flowers on the terrace or in the garden.

Each plant pot comes in two pieces, a pot and a saucer. Both the plant pot and saucer is made of fiber concrete with a waterproof glazing on the inside. The plant pot has a small hole in the bottom, where the water can run through, which ensures a good water and air flow for the plants. The plant pots are hand painted to achieve a natural and textured surface color. Each plant pot undergoes a surface coating, to make sure it can stand rain and direct sunlight. The plant pots can not stand frost.

Arket and Urchin is designed as a sculptural take on traditional plant pots. Inspired by the sea urchin, Urchin is characterized by a large oval shaped pot, resting on top of what appears to be three massive legs. Designed as a new take of the traditional flower pot saucer, the three legs adds a sculptural and intriguing detail to the Urchin plant pot. Arket is influenced by sharp architectural lines and organic curves. The plant pot is characterized by 5 vertical lines, imitating a star shape seen from above. Arket adds a sculptural detail to any interior or garden, playing with contrasts of light and shadow, sharp lines and soft curves.



# URCHIN PLANT POTS

Inspired by the shape of a sea urchin, Urchin is characterized by a large oval pot, resting on top of what appears to be three massive legs. Designed as a new take on the traditional plan pot saucer, the massive legs can hold water from a plant and allows the plant to breath. Urchin comes in four sizes.

Each Urchin includes two pieces, a plant pot and saucer. Both plant pot and saucer is waterproof and a small hole in the bottom of the pot, ensures a good water and air flow for the plant.

Designed by Kristian Sofus Hansen & Tommy Hyldahl



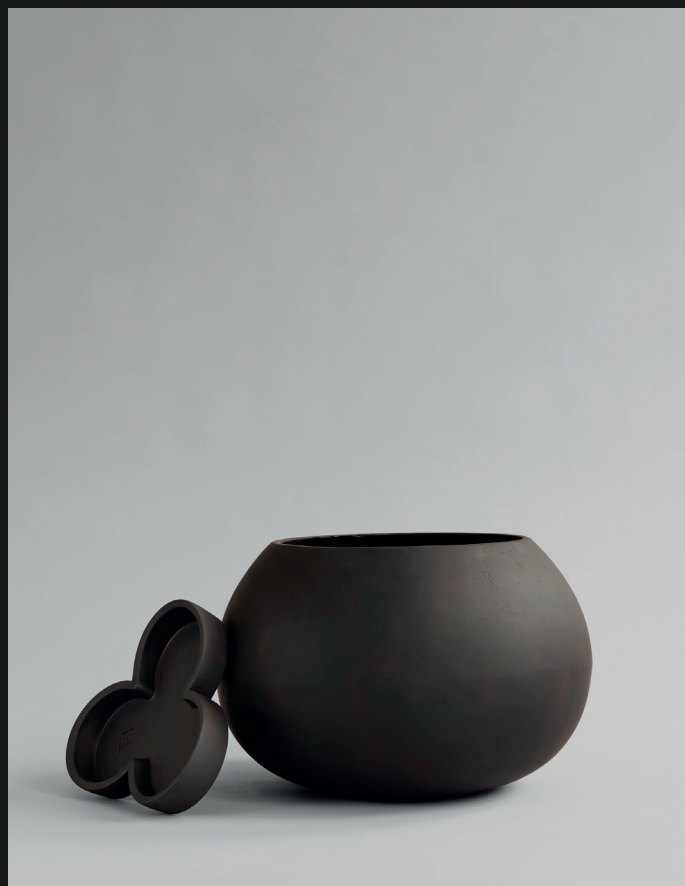


# URCHIN PLANT POTS



URCHIN PLANT POT, BIG - COFFEE

NO. 231001



URCHIN PLANT POT, MEDIO - COFFEE

NO. 231002



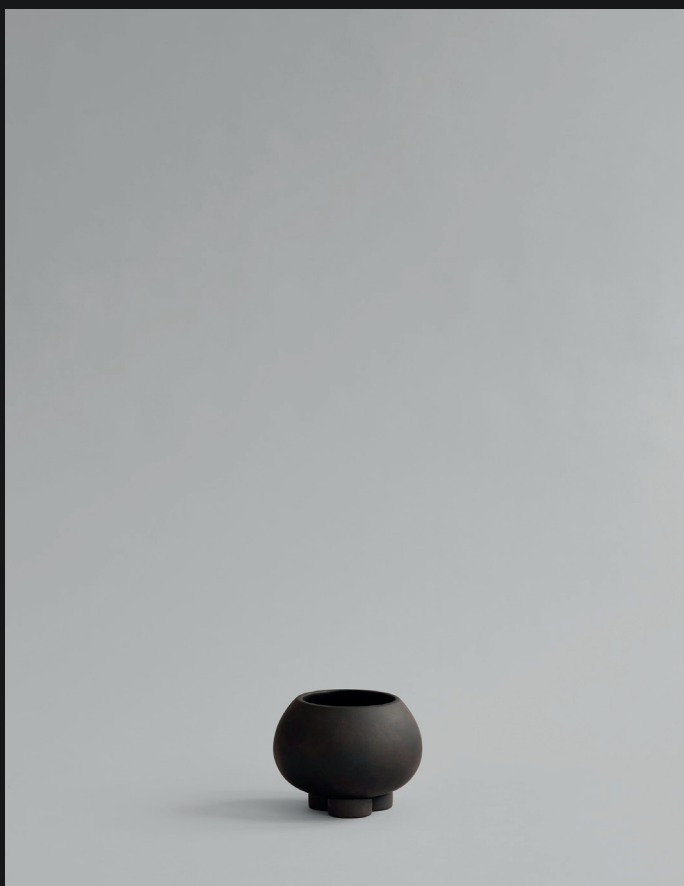
# URCHIN PLANT POTS

---



URCHIN PLANT POT, MINI - COFFEE

NO. 231003



URCHIN PLANT POT, PETIT - COFFEE

NO. 231004



# ARKET PLANT POTS

Arket is a sculptural plant pot influenced by sharp architectural lines and organic curves. Characterized by 5 vertical lines, Arket creates a sculptural contrast between light and shadow, sharp lines, and soft surfaces. Arket comes in four sizes.

Each Arket includes two pieces, a plant pot and saucer. Both plant pot and saucer are waterproof and a small hole in the bottom of the pot, ensures a good water and air flow for the plant.

Designed by Kristian Sofus Hansen & Tommy Hyldahl.



# ARKET PLANT POTS



ARKET PLANT POT, BIG - DARK GREY



NO. 231005



ARKET PLANT POT, MEDIO - DARK GREY



NO. 231006

# ARKET PLANT POTS



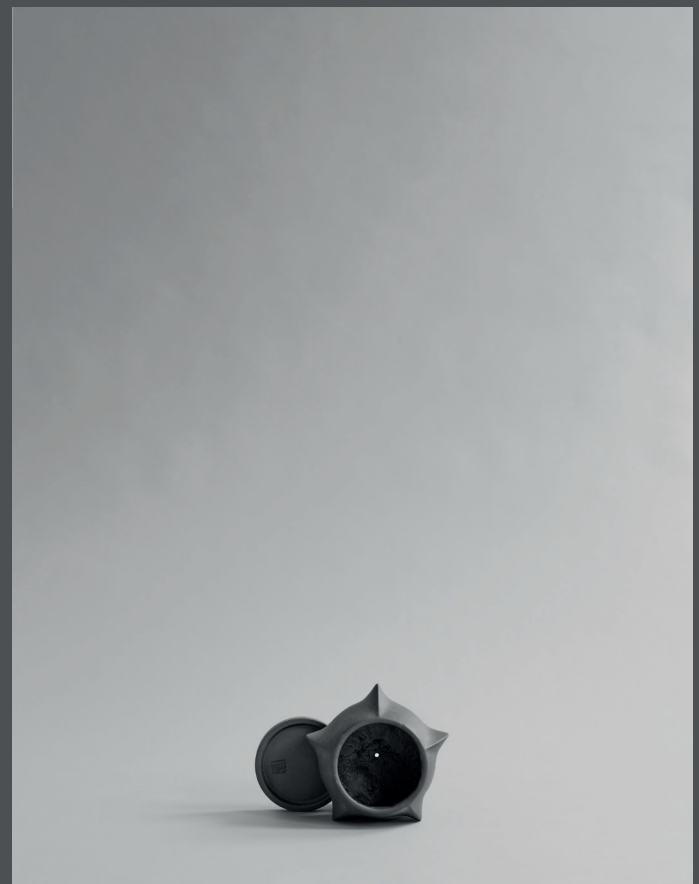
ARKET PLANT POT, MINI - DARK GREY

NO. 231007



ARKET PLANT POT, PETIT - DARK GREY

NO. 231008



# LOTUS

Inspired by the floral shapes of the Lotus flower, Lotus emphasises organic shapes and sharp lines into a collection of sculptural ceramic vases. Elegantly sculpted the Lotus vase is characterised by several flowers fading into each other, resting on top of a set of sharp feet. The smooth and organic surface is contrasted by sharp lines, running from the feet to the top of the vase, creating a star shaped opening. Lotus comes in two sizes and is made of fiber concrete. The surface is hand glazed in order to achieve the unique surface texture. The colours may vary slightly, due to that it's a handmade product. The vase is not 100% waterproof, therefore a bag for fresh flowers is included. Designed by Kristian Sofus Hansen & Tommy Hyldahl.



LOTUS VASE, MINI - COFFEE

NO. 223032



LOTUS VASE, BIG - COFFEE

NO. 223033







# BABURU

Balancing on top of a small bubble, the Babaru Bowl is a sculptural table and can be used for both storage or stand alone as an artistic object. The bowls vary slightly and while it is not 100% waterproof, a bag for fresh flowers.





inspired by a traditional Japanese bowl design. Baburu, the Japanese name for bubble, comes in three different sizes, to elevate a space. The series is made of ceramic and as it is a hand glazed natural product, the colours may vary. A white color version is included. Designed by Kristian Sofus Hansen & Tommy Hyl Dahl.



# BABURU



BABURU BOWL, MINI - BLACK

NO. 223046



BABURU BOWL, MEDIO - BLACK

NO. 223044



BABURU BOWL, BIG - BLACK

NO. 223042



# BABURU



BABURU BOWL, MINI - BONE WHITE

NO. 223045



BABURU BOWL, MEDIO - BONE WHITE

NO. 223043



BABURU BOWL, BIG - BONE WHITE

NO. 223041







# TUBE CANDLE HOLDER

A series  
spired  
sculptu  
ceramic  
& Tomm



s of ceramic lamellas, the Tube Candle Holders is all about repetition as a minimalistic sculptural detail. In-  
by 70's sculptural artwork and design, tube is based on a single oval shape, repeating itself into a continuous  
r object. Tube comes in two different sizes, with two candles or four candles. The candle holders are made of  
e and as it is a hand glazed natural product, the colours may vary slightly. Designed by Kristian Sofus Hansen  
y Hyldahl.

# TUBE CANDLE HOLDER



TUBE CANDLE HOLDER, MINI - COFFEE

NO. 223075

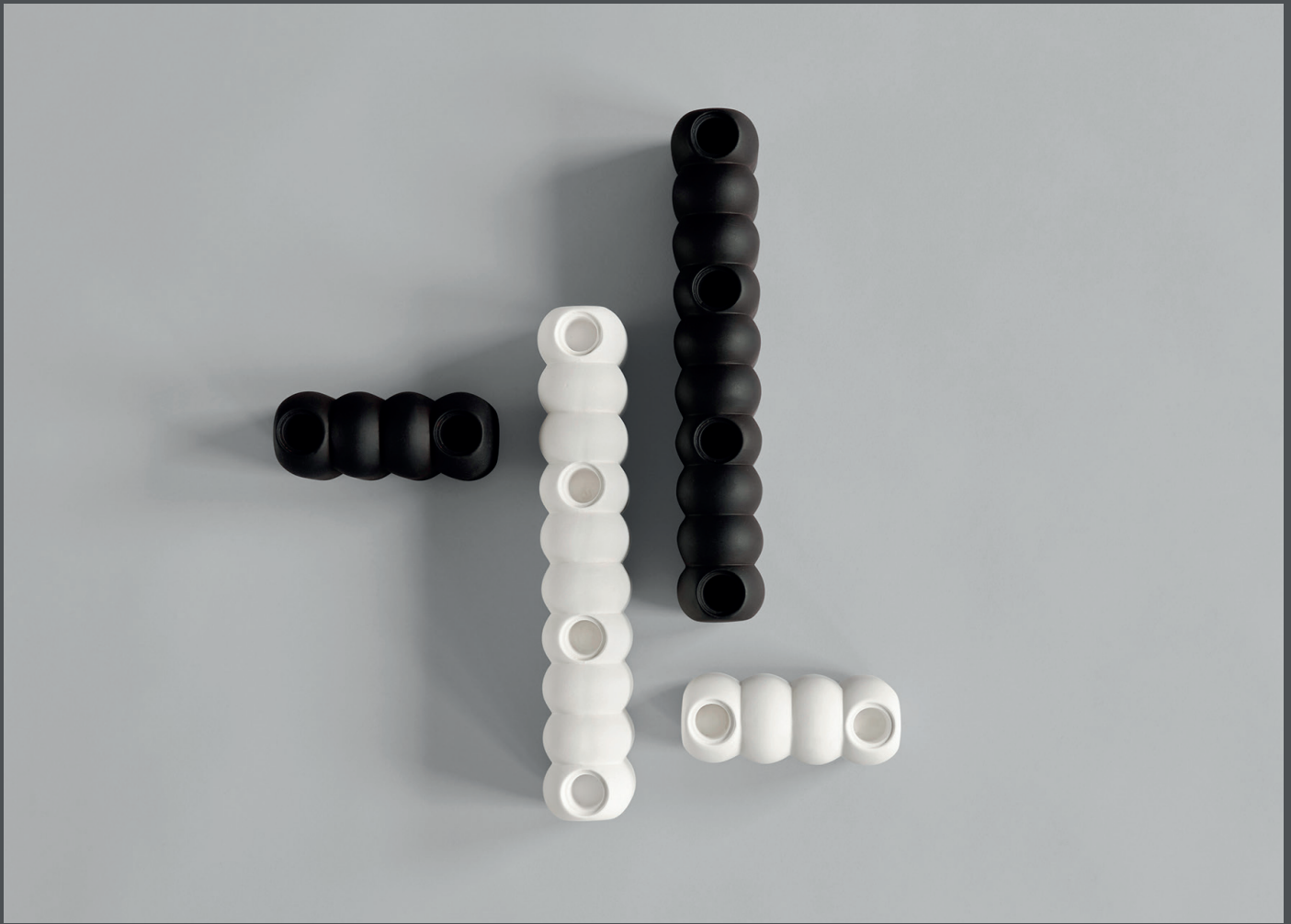


TUBE CANDLE HOLDER, BIG - COFFEE

NO. 223073



# TUBE CANDLE HOLDER



TUBE CANDLE HOLDER, MINI - BONE WHITE

NO. 223076

TUBE CANDLE HOLDER, BIG - BONE WHITE

NO. 223074

# COBRA CANDLE HOLDER

A tribute to the Cobra Arts Movement of the 1960s, the collection is the epitome of quirky vases and candleholders that will add joy to any interior setting. Think whimsical, soft and organic shapes unmistakably reminiscent of human silhouettes and curves. True to the Cobra artists way of working, the series takes its starting point in naive hand sketches leading to bodily silhouettes. The candle holders are made of ceramic and as it is a hand glazed natural product, the colours may vary slightly. Designed by Kristian Sofus Hansen & Tommy Hyldahl.



COBRA CANDLE HOLDER - BONE WHITE

NO. 223072



COBRA CANDLE HOLDER - BLACK

NO. 223071







# EMPIRE

Rich on architectural references, the Empire Vases reminisces building facades to create a slim and vertical design. The riffled surface creates a tactile feeling and shadows changes the vase throughout the day. The height of the Empire Vases makes them ideal for tall flower decorations and long branches. The series is made of ceramic as it is a hand glazed natural product, the colours may vary slightly and while it is not 100% waterproof, a bag for fresh flowers is included. Designed by Kristian Sofus Hansen & Tommy Hyl Dahl.



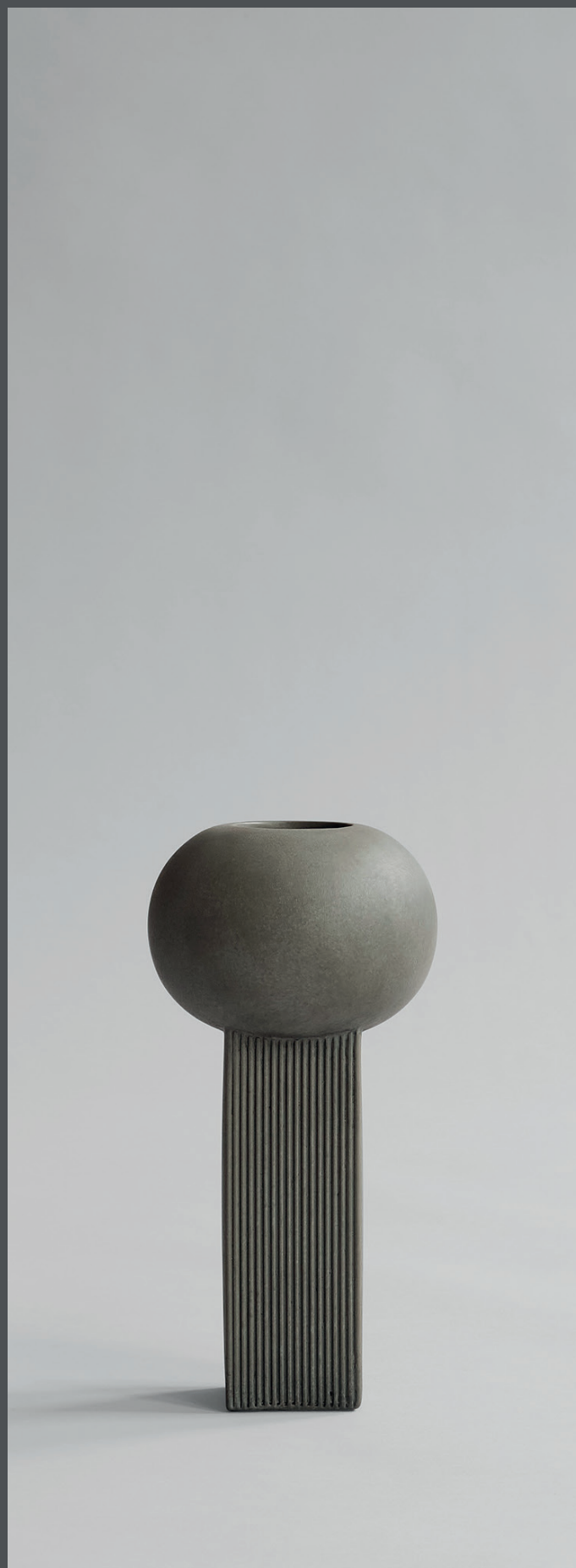
# EMPIRE

---



EMPIRE VASE, BIG - DARK GREY

NO. 223034



EMPIRE VASE, MINI - DARK GREY

NO. 223036

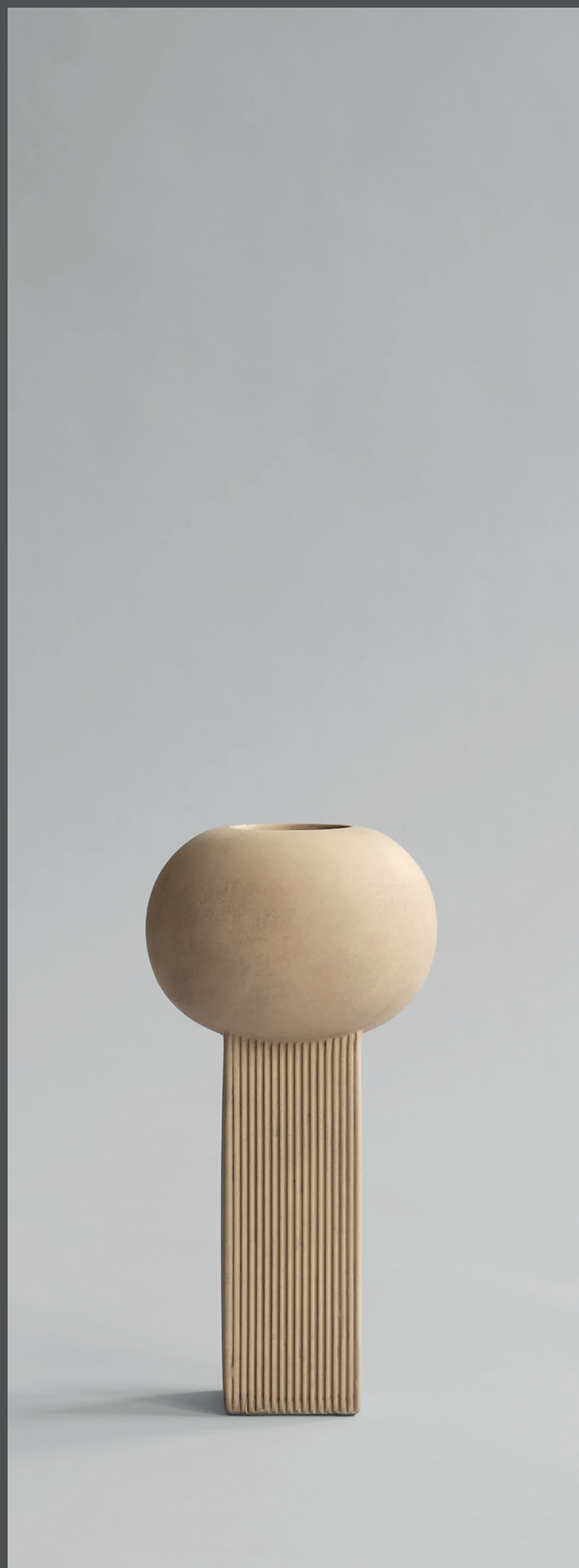
# EMPIRE

---



EMPIRE VASE, BIG - SAND

NO. 223035



EMPIRE VASE, MINI - SAND

NO. 223037

# MEDUSA

Inspired by the characteristic shapes of the Medusa, the Medusa Ceramics emphasises the soft oval shapes and details of the jellyfish. Elegantly sculpted, each Medusa is lifted slightly above the floor by a number of small conic shaped legs, reminding the tentacles of the jellyfish. Medusa has a very elegant and simple expression, and can easily be placed in any interior scheme as a sculptural object or vase for flowers or decorations. Medusa comes in both vases and trays and is made from ceramic. The surface is hand glazed in order to achieve the unique surface texture. The colours may vary slightly, due to that it is a handmade product. The vase is not 100% water proof, therefore a bag for fresh flowers is included. Designed by Kristian Sofus Hansen & Tommy Hyl Dahl.







# MEDUSA

---



MEDUSA VASE, MINI - COFFEE

NO. 221062



MEDUSA VASE, BIG - COFFEE

NO. 221061

# MEDUSA

---



MEDUSA TRAY, MINI - COFFEE

NO. 221064



MEDUSA TRAY, BIG - COFFEE

NO. 221063



# BLOOM

Inspired by floral shapes, Bloom emphasizes soft and organic shapes into a collection of sculptural vases, emphasizing the different stages of a flower from closed to open. Bloom is an interpretation of 70s floral interior design. The collection is enriched by a beautiful play of shadows around the depths of the surface. Due to its expressive design, it is suitable for tables and trays and is made from ceramic or fiber concrete. The surface is hand glazed in order to achieve a soft, organic texture. A bag for fresh flowers is included. Designed by Kristian Sofus Hansen & Tommy Hyl Dahl.



ceramic vases and trays. Elegantly sculpted, each Bloom ceramic is characterized by several flower leaves fading into each other, remini-  
spired design. But with a more raw and clean expression. The smoothly curved surface is contrasted by a strong underlying geometry and  
design, the Bloom vases changes experience throughout the day, according to the position of light and shadows. Bloom comes in both vases  
the unique surface texture. The colours may vary slightly, due to that it is a handmade product. The vase is not 100% waterproof, therefore

# BLOOM - BONE WHITE

---



BLOOM VASE, BIG - BONE WHITE

NO. 221042



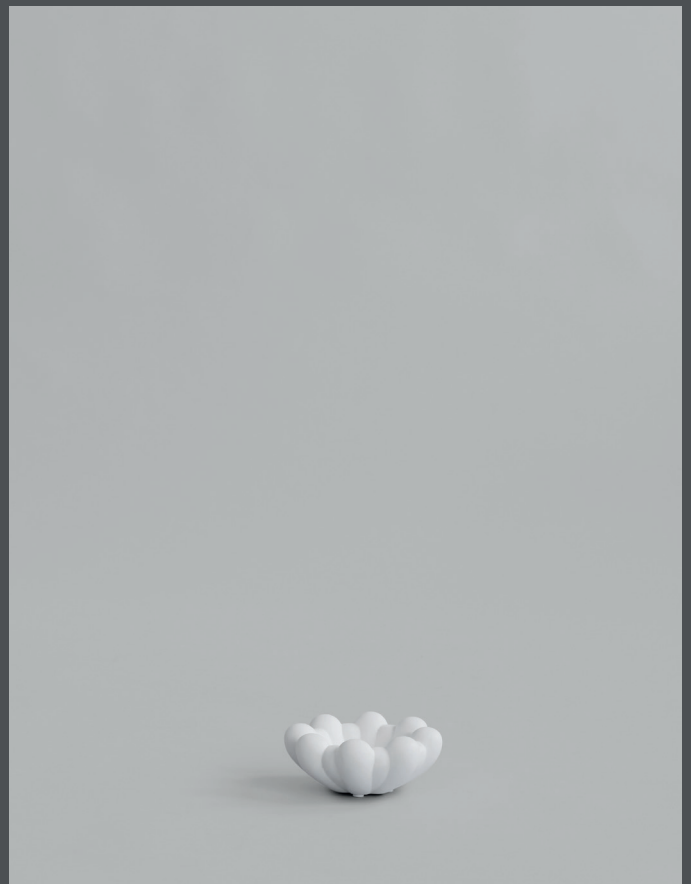
BLOOM VASE, MINI - BONE WHITE

NO. 221041



BLOOM TRAY, BIG - BONE WHITE

NO. 221044



BLOOM TRAY, MINI - BONE WHITE

NO. 221043

# BLOOM DARK GREY

---



BLOOM VASE, BIG - DARK GREY

NO. 221046



BLOOM VASE, MINI - DARK GREY

NO. 221045



BLOOM TRAY, BIG - DARK GREY

NO. 221048



BLOOM TRAY, MINI - DARK GREY

NO. 221047



# S U M O

Sumo celebrates the human body. As a reference to the Japanese sport Sumo, all vases are voluminous and feature double openings and deep carved openings. The Sumo collection looks at the contrast between familiar and unfamiliar forms. The Sumo collection is designed as a stand alone artistic object, yet forming a united family of objects. The texture is smooth and matte. The colours may vary slightly, due to that it is a handmade product. The vase is not 100% water resistant.





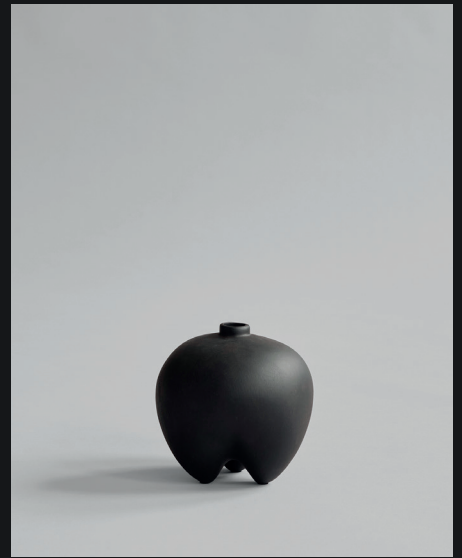
in size and shape, resting on top of narrow pointing legs. All vases have different openings from the traditional narrow vase openings to  
r vase shapes and the addition of more artistic, abstract ideas and details, questioning our individual perceptions of the shape of a vase.  
ts when gathered. Sumo vases are made from ceramic & Fiber Concrete. The surface is hand glazed in order to achieve the unique surface  
er proof, therefore a bag for fresh flowers is included. Designed by Kristian Sofus Hansen & Tommy Hyldahl.

# SUMO



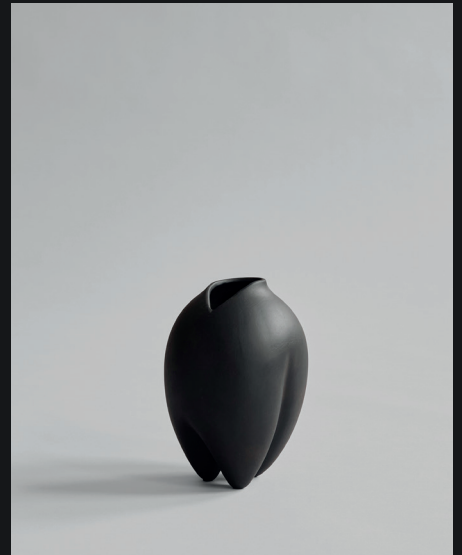
SUMO VASE, BIG - COFFEE

NO. 213011



SUMO VASE, PETIT - COFFEE

NO. 223061



SUMO VASE SLIM, PETIT - COFFEE NO. 223063



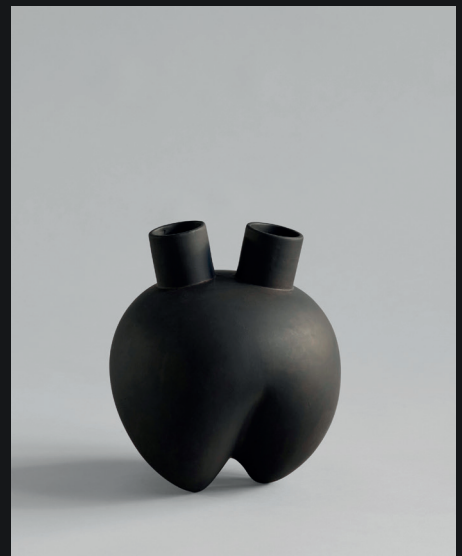
SUMO VASE, SLIM - COFFEE

NO. 213014



SUMO VASE, MINI - COFFEE

NO. 213012



SUMO VASE, HORNS - COFFEE

NO. 213013

# SUMO



SUMO VASE, HORNS - BONE WHITE NO. 213017



SUMO VASE SLIM, PETIT - BONE WHITE  
NO. 223064



SUMO VASE, BIG - BONE WHITE

NO. 213015



SUMO VASE, SLIM - BONE WHITE NO. 213018



SUMO VASE, MINI - BONE WHITE NO. 213016



SUMO VASE, PETIT - BONE WHITE NO. 223062



# GUGGENHEIM

The connection between the sharp archetypical geometric lines and the soft, organic curves creates a perfect balance of form and angle. The texture of the handmade surface beautifully catches the light, giving each piece a unique character. 100% waterproof. Designed by Kristian Sofus Hansen & Tommy Hyl



and thin silhouettes of the Guggenheim collection creates a decorative, optical illusion. Its three dimensional form is intriguing from any angle. The light and becomes an artistic object in the space. The hand glazed ceramic collection may vary slightly in terms of colour and it is not uniform.

# GUGGENHEIM

---



GUGGENHEIM BIG - BLACK

NO. 203004



GUGGENHEIM BIG - DARK GREY

NO. 111125



GUGGENHEIM BIG - COFFEE

NO. 111219



GUGGENHEIM MINI - BLACK

NO. 111126



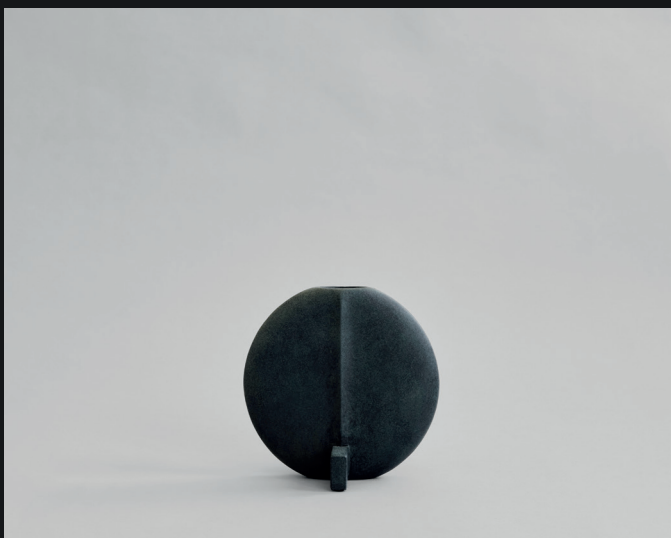
GUGGENHEIM MINI - DARK GREY

NO. 203005



GUGGENHEIM MINI - COFFEE

NO. 111220



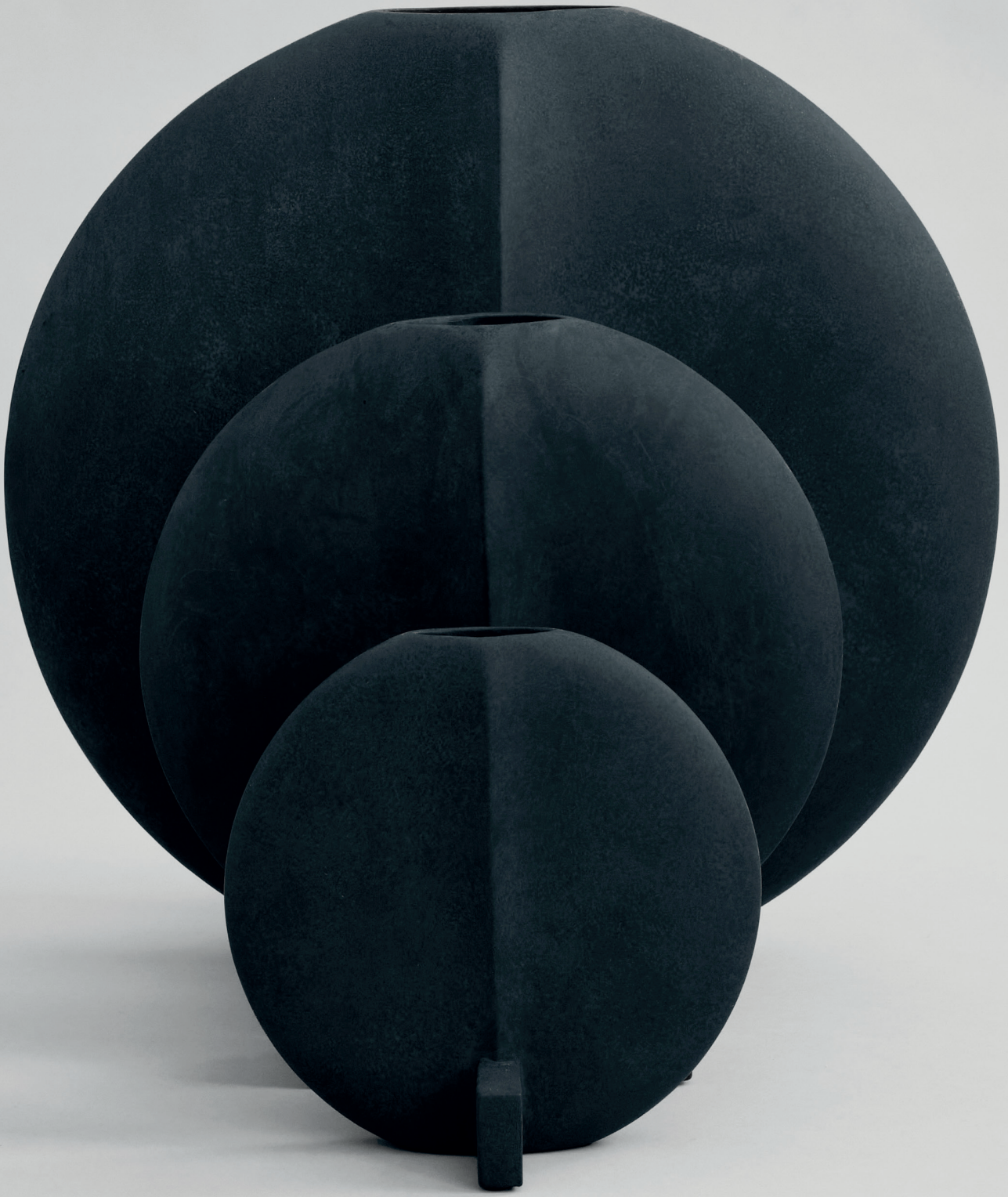
GUGGENHEIM PETIT - DARK GREY

NO. 213042



GUGGENHEIM PETIT - BONE WHITE

NO. 213043



# SUBMARINE

Submarine is a collection of peculiar, eccentric vases that takes a stand and makes a statement in any home. The Submarine collection radiates its own personality with the three different sizes and shapes. As it is a hand glazed natural product, the colours may vary slightly and as it is not 100% waterproof, a bag for fresh flowers is included. Designed by Nicolaj Nøddesbo & Tommy Hyldahl.

SUBMARINE VASE, BIG - LIGHT GREY

NO. 111287

SUBMARINE VASE, FAT - DARK GREY

NO. 111289

SUBMARINE VASE, SMALL - DARK GREY

NO. 111288







# WING

It is all about gravity and a sense of floating through the air. Wing is a sculptural collection of bowls that makes one want to be lifted into thin air even though its presence is very much grounding as well. The silhouette is made up of two wings and a single cylinder-shaped leg as a steady contrast and the bowl is casted in ceramic. Use Wing as a container or as a stand alone art piece on the table. As it is a hand glazed natural product, the colours may vary slightly and that it is not 100% waterproof. Designed by Kristian Sofus Hansen & Tommy Hyldahl.





# WING

---



WING BOWL, BIG - COFFEE

No. 214051



WING BOWL, MINI - COFFEE

No. 214052



WING BOWL, BIG - SAND

NO. 221008



WING BOWL, MINI - SAND

No. 221010



WING BOWL, BIG - BONE WHITE

NO. 221007



WING BOWL, MINI - BONE WHITE

NO. 221009





# KABIN

Kabin is a series of vases inspired by the classical, simple forms found in Japanese craftsmanship. The design features a small foot or pedestal, adding refinement to the classic form. The Kabin series is a love story between nature and art. As a hand glazed nature product, the colours may vary slightly and as it is not 100% waterproof, a bag for



The large table vases offer the same stability and complexity as the traditional Japanese tea bowls, and the oval-shaped bodies rest on top between Japanese and Scandinavian craftsmanship, resulting in this minimalist collection of vases in four different structures. As it is a fresh flowers is included. Designed by Nicolaj Nøddesbo, Kristian Sofus Hansen & Tommy Hyldahl.

# KABIN

## KABIN SHISEN

Kabin Shisen, offering a unique detailed finish, with the attempt to create a unique surface of hundreds of small circles fading into a tactile pattern. Shisen is Japanese for a mesh or the way of seeing things. As it is a hand glazed nature product, the colours may vary slightly and as it is not 100% waterproof, a bag for fresh flowers is included.



KABIN VASE, SHISEN - SAND

NO. 223031

## KABIN LAMELLA

Kabin Lamella, offering a fresh take on classic vase shape with a certain number of lamellas covering the round surface. Elegantly sculpted, the Kabin Lamella adds an organic and sculptural detail to any interior scheme. As it is a hand glazed nature product, the colours may vary slightly and as it is not 100% waterproof, a bag for fresh flowers is included.



KABIN VASE, LAMELLA - COFFEE

NO. 221066

## KABIN DEZATO

Kabin Dezato, offering a unique tactile texture, with the attempt to create surface similar to a desert landscape by using different burning techniques. Dezato is the Japanese name for desert. As it is a hand glazed nature product, the colours may vary slightly and as it is not 100% waterproof, a bag for fresh flowers is included.



KABIN VASE, DEZATO - SAND

NO. 221065



# KABIN

---



KABIN VASE, FAT - BONE WHITE NO. 213047



KABIN VASE, FAT - BLACK

NO. 213046



KABIN VASE, FAT - SAND

NO. 111043





a tribal mask. Place single flower stems in the narrow top opening or simply leave the vase as a standalone art object. Like open mouths  
d grey colours. As it is a hand glazed natural product, the colours may vary slightly and while it is not 100% waterproof, a bag for fresh  
series of vases designed as a sculptural take on the archetypal idea of a tribal mask. Place single flower stems in the narrow top opening  
e a beautiful, shaped item in calm, soothing and dusty terracotta and grey colours. As it is a hand glazed natural product, the colours may  
y Kristian Sofus Hansen & Tommy Hyl Dahl.

# TRIBAL

---



TRIBAL VASE, BIG - BONE WHITE

NO. 221005



TRIBAL VASE, BIG - DARK GREY

NO. 214005



TRIBAL VASE, MEDIO - BONE WHITE

NO. 221003



TRIBAL VASE, MEDIO - DARK GREY

NO. 214003



TRIBAL VASE, MINI - BONE WHITE

NO. 221001



TRIBAL VASE, MINI - DARK GREY

NO. 214001

# TRIBAL

---



TRIBAL VASE, BIG - TERRACOTTA

NO. 214006



TRIBAL VASE, BIG - SAND

NO. 221006



TRIBAL VASE, MEDIO - TERRACOTTA

NO. 214004



TRIBAL VASE, MEDIO - SAND

NO. 221004



TRIBAL VASE, MINI - TERRACOTTA

NO. 214002



TRIBAL VASE, MINI - SAND

NO. 221002

# KYOTO

Complex and yet so simple. Kyoto is inspired by the form of ancient Japanese and Chinese vases. It is designed as a cross of four massive walls, lifting an oval shaped sphere revealing a circular opening in the center. The two different sized vases are crafted in ceramic and are hand glazed. As it is a natural product, the colours may vary a little and as it is not 100% water-proof, a bag for fresh flowers is included. Designed by Kristian Sofus Hansen & Tommy Hyldahl.



KYOTO VASE, BIG - COFFEE

NO. 201001

KYOTO VASE, MINI - COFFEE

NO. 201002







# COBRA

A tribute to the Cobra Arts Movement of the 1960s, the collection is the epitome of quirky vases that  
True to the Cobra artists way of working, the series takes its starting point in naive hand sketches  
for fresh flowers is included. Designed by Kristian Sofus Hansen & Tommy Hyldahl.





at will add joy to any interior setting. Think whimsical, soft and organic shapes unmistakably reminiscent of human silhouettes and curves. leading to bodily silhouettes. As it is a hand glazed natural product, the colours may vary slightly and while it is not 100% waterproof, a bag

# COBRA BLACK



COBRA VASE DOUBLE, MEDIO - BLACK

NO. 212006



COBRA VASE TALL, MEDIO - BLACK

NO. 212007



COBRA VASE UNO, MEDIO - BLACK

NO. 212005



COBRA VASE FAT, MEDIO - BLACK

NO. 212004



COBRA VASE DOUBLE, MINI - BLACK NO. 203025



COBRA VASE TALL, MINI - BLACK NO. 203023



COBRA VASE UNO, MINI - BLACK NO. 203024

# COBRA BLACK

---



COBRA VASE DOUBLE, HEXA - BLACK

NO. 211031



COBRA VASE TALL, HEXA - BLACK

NO. 211030

# COBRA BUBBLE WHITE



COBRA VASE DOUBLE, MEDIO - BUBBLE WHITE

NO. 201013



COBRA VASE TALL, MEDIO - BUBBLE WHITE

NO. 201010



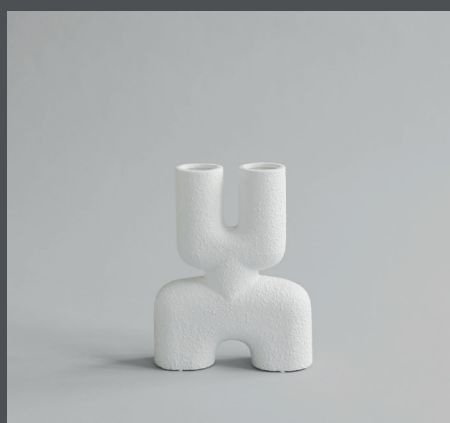
COBRA VASE UNO, MEDIO - BUBBLE WHITE

NO. 201012

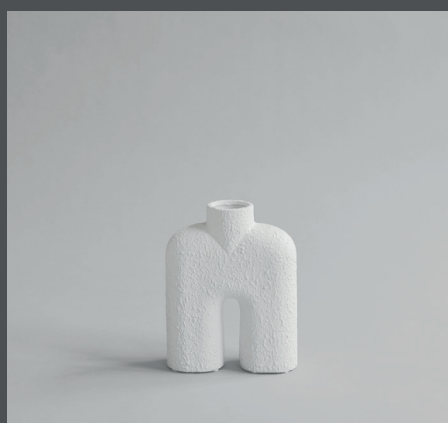


COBRA VASE FAT, MEDIO - BUBBLE WHITE

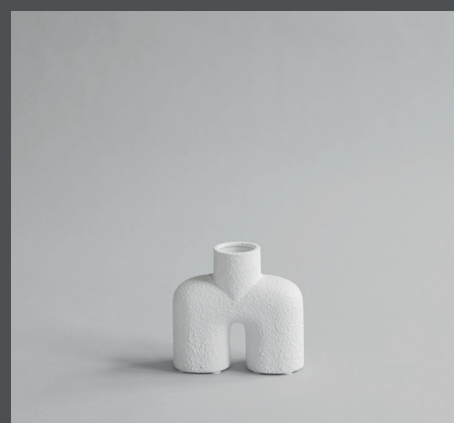
NO. 201011



COBRA VASE DOUBLE, MINI - BUBBLE WHITE  
NO. 203022



COBRA VASE TALL, MINI - BUBBLE WHITE  
NO. 203020



COBRA VASE UNO, MINI - BUBBLE WHITE  
NO. 203021

# COBRA COFFEE

---



COBRA VASE DOUBLE, MEDIO - COFFEE

NO. 211037



COBRA VASE TALL, MEDIO - COFFEE

NO. 211038



COBRA VASE UNO, MEDIO - COFFEE

NO. 211036



COBRA VASE FAT, MEDIO - COFFEE

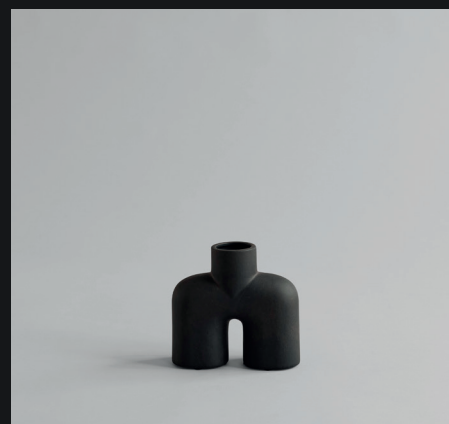
NO. 211035



COBRA VASE DOUBLE, MINI - COFFEE  
NO. 212002



COBRA VASE TALL, MINI - COFFEE  
NO. 212003



COBRA VASE UNO, MINI - COFFEE  
NO. 202001

# COBRA DARK GREY

---



COBRA VASE DOUBLE, MINI - DARK GREY

No. 211033



COBRA VASE TALL, MINI - DARK GREY

NO. 211034



COBRA VASE UNO, MINI - DARK GREY

NO. 211032







# DUCK

Reminiscent of little, individual three-legged characters or friendly creatures, the Duck series is the design manifest of 101 Copenhagen, the collection is held in natural colours in order to fit into a table. As it is a hand glazed natural product, the colours may vary slightly and while it is





a playful and exuberant addition to more minimalist series of trays, vases, bowls and pots in a modern interior. Yet, true to the Scandinavian home. Duck comes in various different shapes, sizes and colours - like individual family members gathered not 100% waterproof, a bag for fresh flowers is included. Designed by Nicolaj Nøddesbo, Kristian Sofus Hansen & Tommy Hyl Dahl.

# DUCK PLATE

---



DUCK PLATE, MINI - COFFEE

NO. 214048



DUCK PLATE, BIG - COFFEE

NO. 214049

# DUCK

---



DUCK VASE, SLIM - COFFEE

NO. 111280



DUCK VASE, SLIM - TERRACOTTA

NO. 213044



DUCK VASE, FAT - TAUPE

NO. 213045



DUCK VASE, FAT - DARK GREY

NO. 111281

# DUCK TRAY

Reminiscent of little, individual three-legged characters or friendly creatures, the Duck series is a playful and exuberant addition to more minimalist series of treys, vases, bowls and pots in a modern interior. Yet, true to the design manifest of 101 Copenhagen, the collection is held in natural colours in order to fit into the Scandinavian home. Duck comes in various different shapes, sizes and colours - like individual family members gathered around a table. As it is a hand glazed natural product, the colours may vary slightly and while it is not 100% waterproof, a bag for fresh flowers is included. Designed by Nicolaj Nøddesbo & Tommy Hyldahl.



DUCK TRAY, SMALL - COFFEE

NO. 111283



DUCK TRAY, BIG - COFFEE

NO. 111282





# DUCK JAR

---



DUCK JAR, MEDIO - BONE WHITE

NO. 214046



DUCK JAR, MEDIO - DARK GREY

NO. 214047



DUCK JAR, MINI - BONE WHITE

NO. 214042



DUCK JAR, MINI - DARK GREY

NO. 214043

# DUCK JAR



DUCK JAR, MEDIO - COFFEE

NO. 214044



DUCK JAR, MEDIO - DARK MEDIO

NO. 214045



DUCK JAR, MINI - COFFEE

NO. 214040



DUCK JAR, MINI - SAND

NO. 214041

# DUCK BOWL BIG

---



DUCK BOWL, BIG - BONE WHITE

NO. 221015



DUCK BOWL, BIG - DARK GREY

NO. 111284



DUCK BOWL, BIG - COFFEE

NO. 111044



DUCK BOWL, BIG - SAND

NO. 111036



# DUCK BOWL MINI



DUCK BOWL, MINI - DARK GREY

NO. 203002



DUCK BOWL, MINI - BONE WHITE

NO. 221016



DUCK BOWL, MINI - COFFEE

NO. 111203



DUCK BOWL, MINI - SAND

NO. 203003



# SPHERE SHISEN LIMITED

The Sphere collection has become synonymous with the visual language and the signature manner. Elegantly sculpted, each vase is finished with an intricate ornate detailing. In close collaboration with highly skilled ceramists, ensuring the precise contrast between the attempt to create a unique surface of hundreds of small circles fading into a tactile slightly and as it is not 100% waterproof, a bag for fresh flowers is included. Designed



ture series of 101 Copenhagen. The series is a family of unique silhouettes and textures gathering in a decorative and sculptural  
inspired by ancient Chinese vases, a palette of faded earth tones is characteristic of the Sphere collection which was developed in  
en the smooth shapes and sharp edges. Sphere Shisen is a new edition to the Sphere series, offering a unique detailed finish, with  
ile pattern. Shisen is Japanese for a mesh or the way of seeing things. As it is a hand glazed nature product, the colours may vary  
l by Kristian Sofus Hansen & Tommy Hyldahl.

# SPHERE SHISEN LIMITED



SPHERE VASE SQUARE BIG, SHISEN - SAND

NO. 231015



SPHERE VASE BUBL BIG, SHISEN - SAND

NO. 231017



SPHERE VASE SQUARE MINI, SHISEN - SAND

NO. 231016



SPHERE VASE BUBL MEDIO, SHISEN - SAND

NO. 231018

# SPHERE SHISEN LIMITED



SPHERE VASE SQUARE BIG, SHISEN - BONE WHITE NO. 231011



SPHERE VASE BUBL BIG, SHISEN - BONE WHITE NO. 231013



SPHERE VASE SQUARE MINI, SHISEN - BONE WHITE NO. 231012



SPHERE VASE BUBL MEDIO, SHISEN - BONE WHITE NO. 231014



# SPHERE

The Sphere collection has become synonymous with the visual language and the signature style. Elegantly sculpted, each vase is finished with an intricate ornate detailing. Inspired by an collaboration with highly skilled ceramists, ensuring the precise contrast between the smooth surfaces and sharp angles. As it is a hand glazed natural product, the colours may vary slightly and with



Series of 101 Copenhagen. The series is a family of unique silhouettes and textures gathering in a decorative and sculptural manner. Inspired by ancient Chinese vases, a palette of faded earth tones is characteristic of the Sphere collection which was developed in close collaboration with the ceramic studio. The vases have rounded shapes and sharp edges. The floor vase, Sphere Giant, is scaled up to a stunning 1 meter and can be placed outdoors; however, not in winter. While it is not 100% waterproof, a bag for fresh flowers is included. Designed by Kristian Sofus Hansen & Tommy Hyldahl.

# SPHERE GIANT

---





# SPHERE GIANT

---



# SPHERE HEXA



SPHERE VASE BUBL, HEXA - SAND

NO. 201016



SPHERE VASE BUBL, HEXA - DARK GREY

NO. 201017



SPHERE VASE SQUARE, HEXA - BLACK

NO. 203013



SPHERE VASE SQUARE, HEXA - SAND

NO. 203014

# SPHERE BUBL BIG



SPHERE VASE BUBL, BIG - DARK GREY

NO. 201015



SPHERE VASE BUBL, BIG - SAND

NO. 201014



# SPHERE SQUARE BIG

---



SPHERE VASE SQUARE, BIG - BLACK

NO. 213021



SPHERE VASE SQUARE, BIG - DARK GREY

NO. 211221



SPHERE VASE SQUARE, BIG - COFFEE

NO. 111183



SPHERE VASE SQUARE, BIG - TERRACOTTA

NO. 212008



SPHERE VASE SQUARE, BIG - BUBBLE WHITE

NO. 202001



SPHERE VASE SQUARE, BIG - SAND

NO. 111028

# SPHERE SQUARE BIG

---



SPHERE VASE SQUARE, BIG - BONE WHITE

NO. 221011



# SPHERE SQUARE MINI



SPHERE VASE SQUARE, MINI - OCHER  
NO. 111181



SPHERE VASE SQUARE, MINI - TERRACOTTA  
NO. 111182



SPHERE VASE SQUARE, MINI - TAUPE  
NO. 203011



SPHERE VASE SQUARE, MINI - COFFEE  
NO. 111021



SPHERE VASE SQUARE, MINI - BONE WHITE  
NO. 221012



SPHERE VASE SQUARE, MINI - BLACK  
NO. 213022



SPHERE VASE SQUARE, MINI - SAND  
NO. 111204



SPHERE VASE SQUARE, MINI - DARK GREY  
NO. 111020



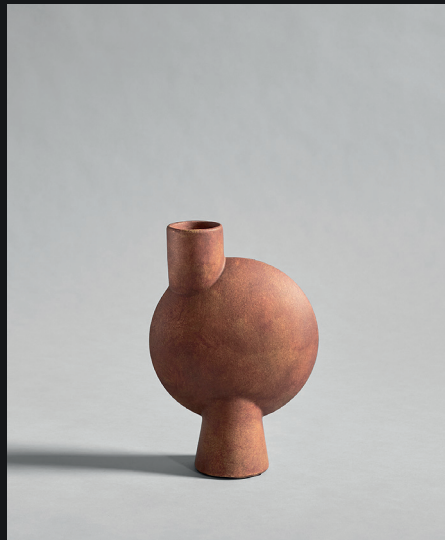
SPHERE VASE SQUARE, MINI - BUBBLE WHITE  
NO. 202002

# SPHERE BUBL MEDIO

---



SPHERE VASE BUBL, MEDIO - OCHER  
NO. 203007



SPHERE VASE BUBL, MEDIO - TERRACOTTA  
NO. 111173



SPHERE VASE BUBL, MEDIO - TAUPE  
NO. 111174



SPHERE VASE BUBL, MEDIO - COFFEE  
NO. 111193



SPHERE VASE BUBL, MEDIO - BONE WHITE  
NO. 221013



SPHERE VASE BUBL, MEDIO - DARK GREY  
NO. 211220



SPHERE VASE BUBL, MEDIO - SAND  
NO. 111025



SPHERE VASE BUBL, MEDIO - BLACK  
NO. 213023



SPHERE VASE BUBL, MEDIO - BUBBLE WHITE  
NO. 202004



# SPHERE BUBL MINI

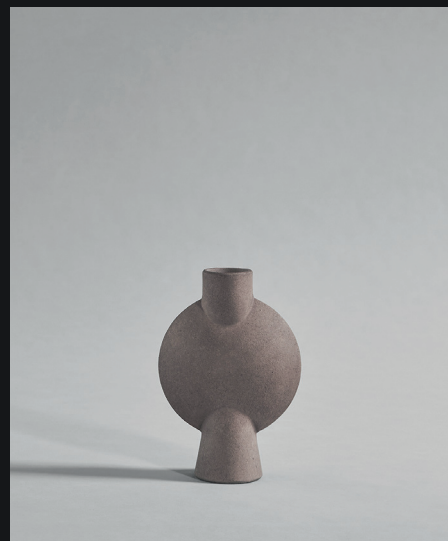
---



SPHERE VASE BUBL, MINI - OCHER  
NO. 111180



SPHERE VASE BUBL, MINI - TERRACOTTA  
NO. 203010



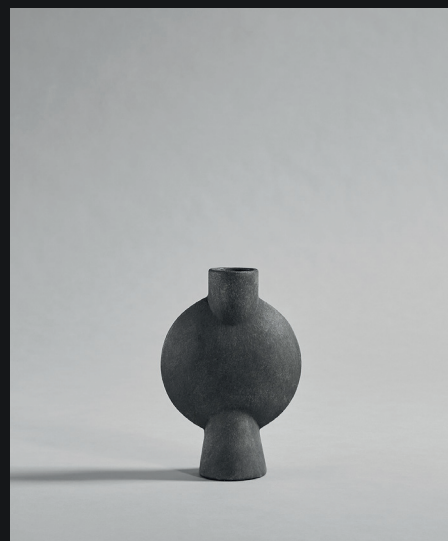
SPHERE VASE BUBL, MINI - TAUPE  
NO. 111176



SPHERE VASE BUBL, MINI - COFFEE  
NO. 111030



SPHERE VASE BUBL, MINI - BONE WHITE  
NO. 221014



SPHERE VASE BUBL, MINI - DARK GREY  
NO. 111029



SPHERE VASE BUBL, MINI - SAND  
NO. 203008



SPHERE VASE BUBL, MINI - BLACK  
NO. 213024



SPHERE VASE BUBL, MINI - BUBBLE WHITE  
NO. 202003

# OFFSET

Like a design process frozen in time, the Offset vase is a distortion of the familiar rounded shape being cut. It challenges the idea of a vase and drastically changes appearance depending on the angles it is viewed from: From an imitation of a traditional vase to a sculptural object. Offset is made from fibre concrete and comes in two sizes. As it is a hand glazed natural product, the colours may vary slightly and as it is not 100% waterproof, a bag for fresh flowers is included. Designed by Nicolaj Nøddesbo & Tommy Hyldahl.







# OFFSET

---



OFFSET VASE, BIG - COFFEE

NO. 211016



OFFSET VASE, MINI - COFFEE

NO. 211017



OFFSET VASE, BIG - DARK GREY

NO. 111213



OFFSET VASE, MINI - DARK GREY

NO. 111214

# OSAKA

Asian ceramic storage objects serve as an inspiration for Osaka, a series of sculptural and cute bowls that will adorn any tabletop. The simplified half sphere is lifted from the ground by three walls as if to merge the perfect round and square shapes in one object. The brutalistic and heavy appearance of the Osaka bowls are emphasized by the fact that it is cast in solid fiber concrete. The refined textured surface is hand glazed and as it is a natural product, the colours may vary slightly. It is not 100% waterproof. Designed by Nicolaj Nøddesbo & Tommy Hyldahl.



OSAKA BOWL, BIG - COFFEE

NO. 111209



# OKA TRAY

The Oka tray is inspired by traditional Japanese serving trays, often produced in wood or bamboo. Transforming this well-known form into a new material, in this case solid fiber concrete, a certain heaviness and a refined texture of the surface is added, without compromising on the recognizable shape. With its sculptural and architectural shape, it can be used for various decoration purposes or stand alone as a piece of art in its own right. As it is a natural product, the colours may vary a little. Not 100% waterproof. Designed by Kristian Sofus Hansen & Tommy Hyldahl.



OKA TRAY - COFFEE

NO. 201022









# GETA TRAY

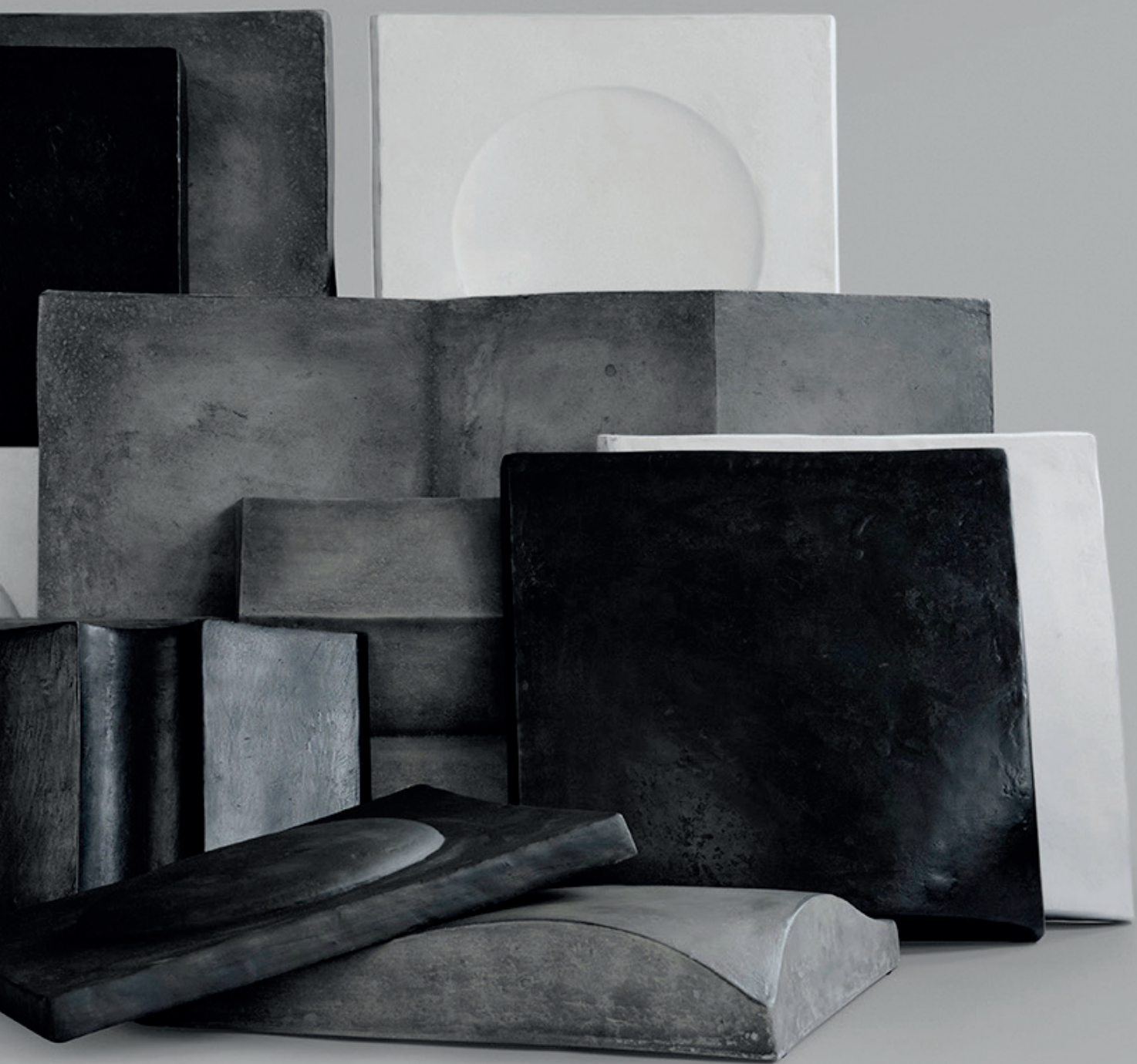
The Geta Tray is inspired by Japanese decoration trays, where the platform is elevated above the table surface, highlighting a specific object or decoration piece. The name is a reference to the classic Japanese Geta shoes with two prongs. It is cast in solid fiber concrete to add a certain heaviness, while also creating a unique and refined texture. Geta can be used for various decorative purposes or stand alone as a statement piece in itself. As it is a hand glazed natural product, the colours may vary slightly and it is not waterproof safe. Designed by Kristian Sofus Hansen & Tommy Hyl Dahl.



# SCULPT ART

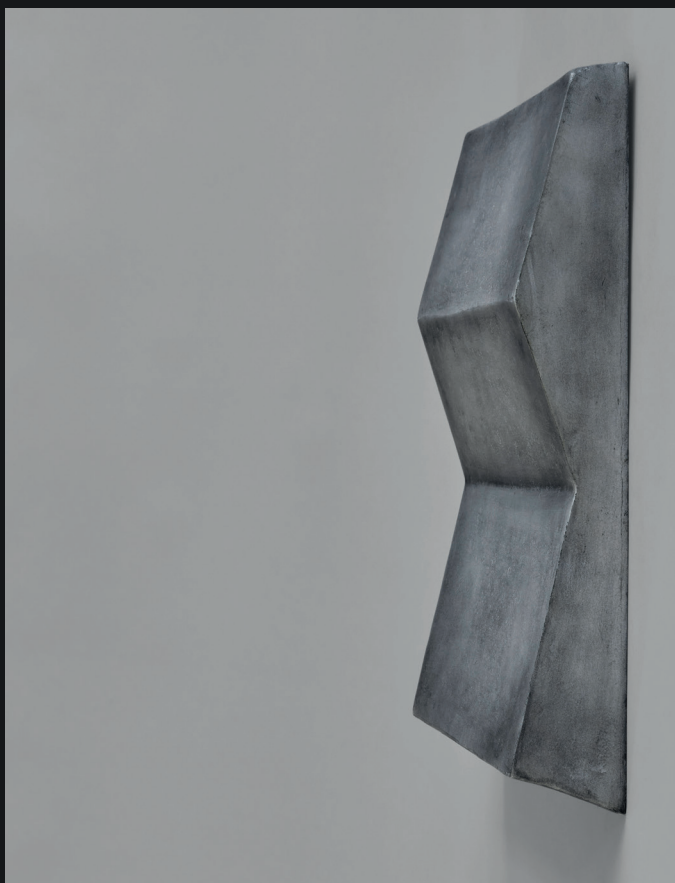
The Sculpt Art collection is a series of reliefs for hanging on the wall as pure artistic intentions. The sculptural pieces pull their inspiration from brutalist architecture details, design history and concrete as a surface and material in American Minimalist art of the 1960s. Each piece is handmade from a sustainable concrete-like material of recycled newspapers, sand and chalk powder, combining artistic work with sustainable production methods. The Sculpt Wall series are available in six different shapes and can easily be hung on a wall with screws and brackets on the backside. Designed by Kristian Sofus Hansen & Tommy Hyl Dahl.





# SCULPT ART BIG

---



SCULPT ART FACE, BIG - DARK GREY

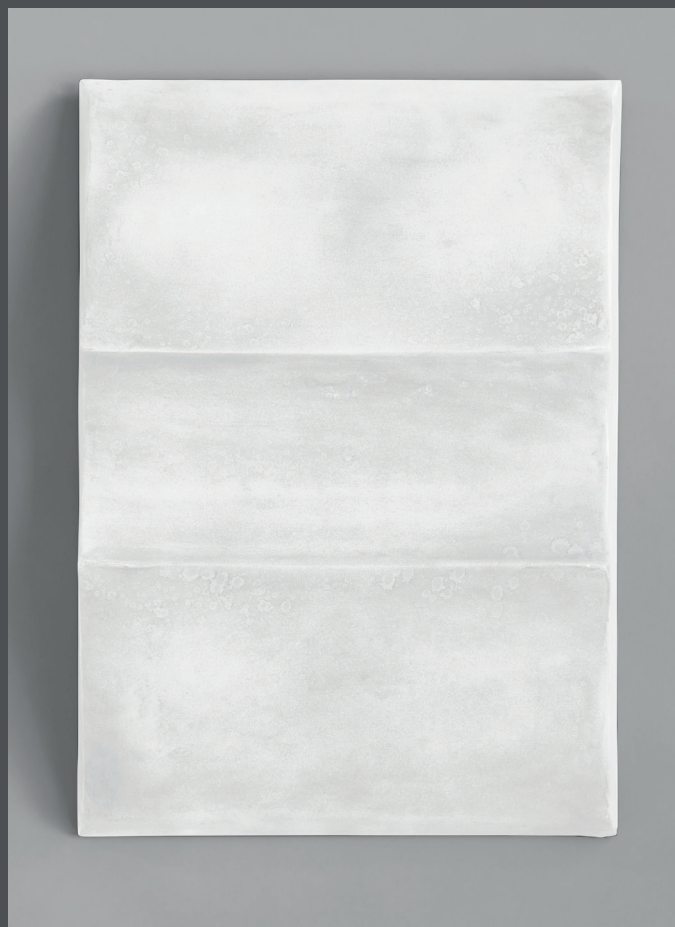
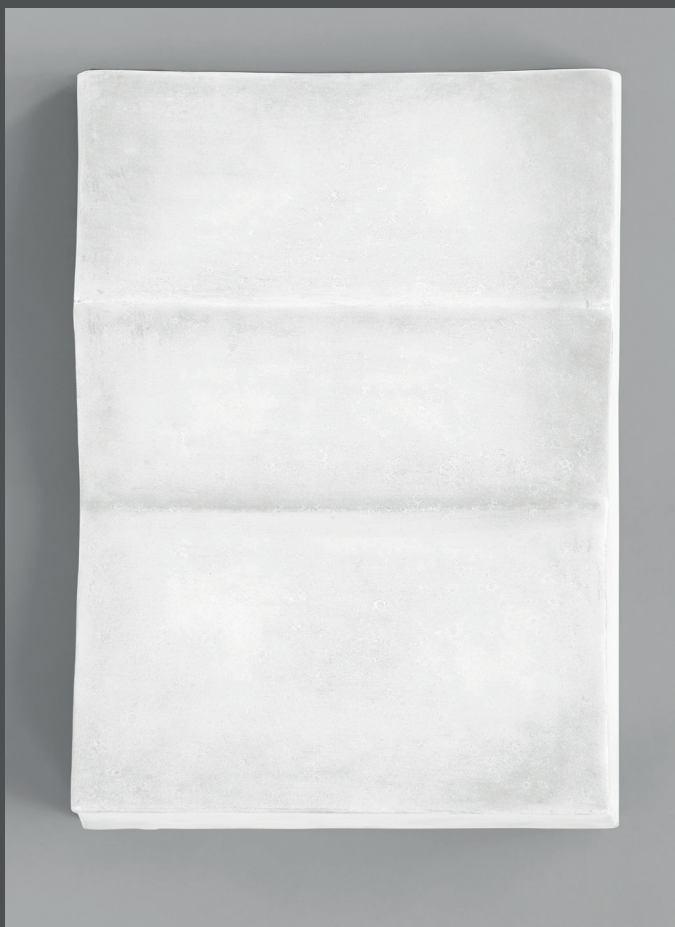
NO. 221051

SCULPT ART WAVE, BIG - DARK GREY

NO. 221053

# SCULPT ART BIG

---



SCULPT ART FACE, BIG - BONE WHITE

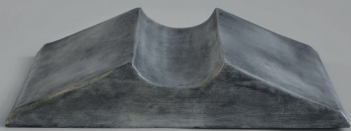
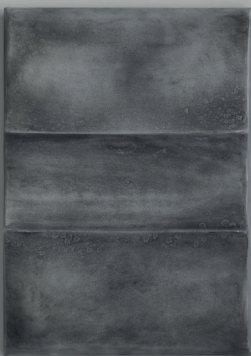
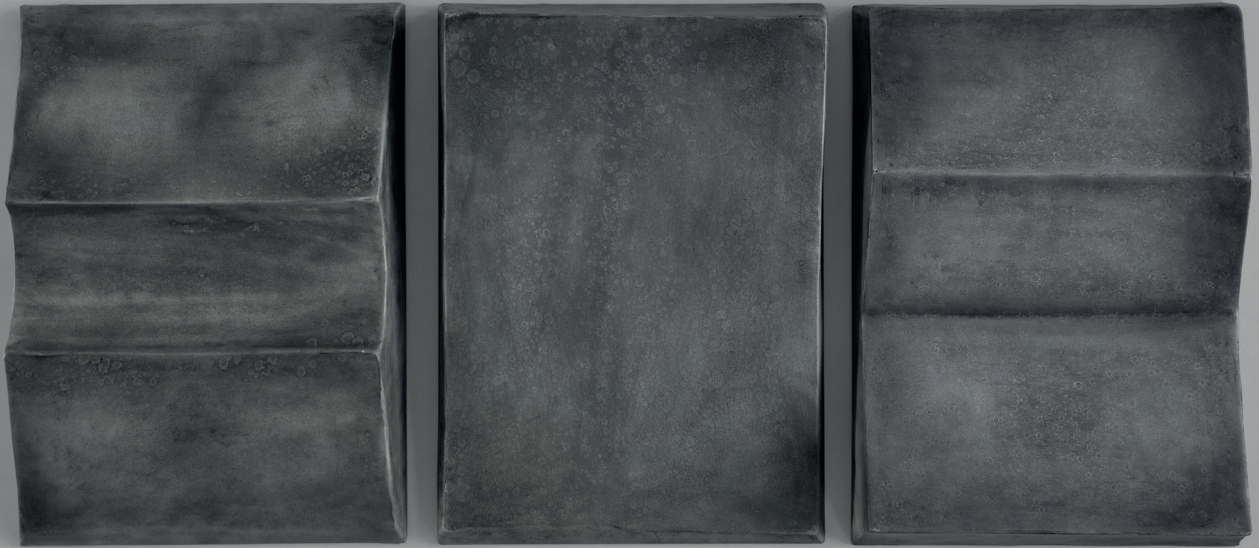
NO. 221052

SCULPT ART WAVE, BIG - BONE WHITE

NO. 221054

# SCULPT ART MINI

---



SCULPT ART WAVE, MINI - DARK GREY  
NO. 203053

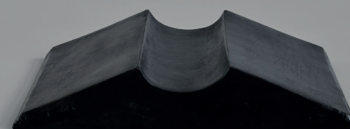
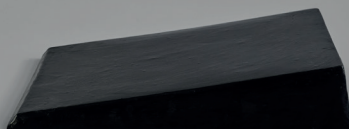
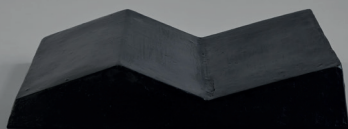
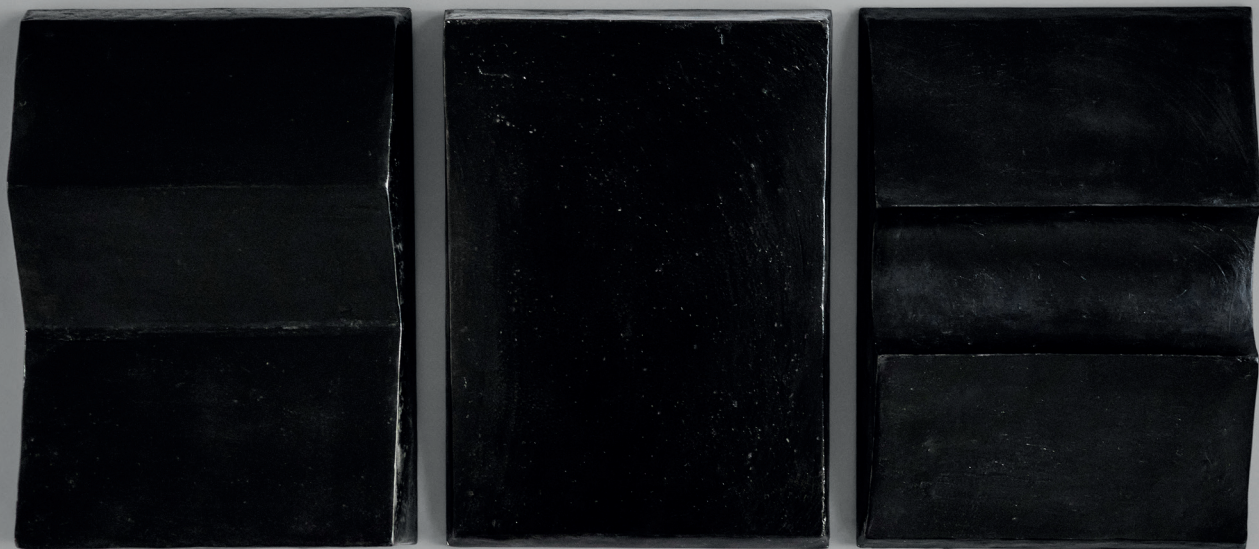
SCULPT ART TRIANGLE, MINI - DARK GREY  
NO. 203051

SCULPT ART FACE, MINI - DARK GREY  
NO. 203055



# SCULPT ART MINI

---

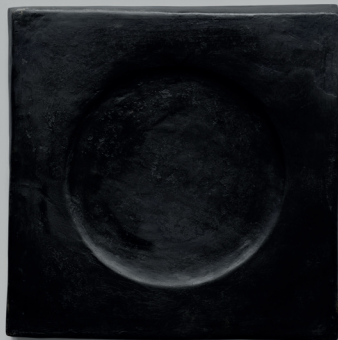
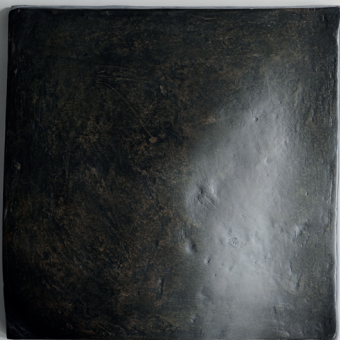


SCULPT ART FACE, MINI - COFFEE  
NO. 203054

SCULPT ART TRIANGLE, MINI - COFFEE  
NO. 203050

SCULPT ART WAVE, MINI - COFFEE  
NO. 203052

# SCULPT ART COFFEE



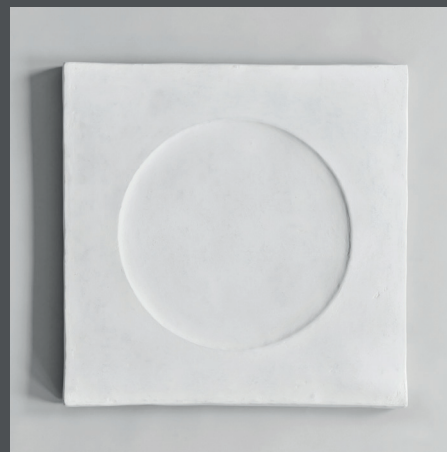
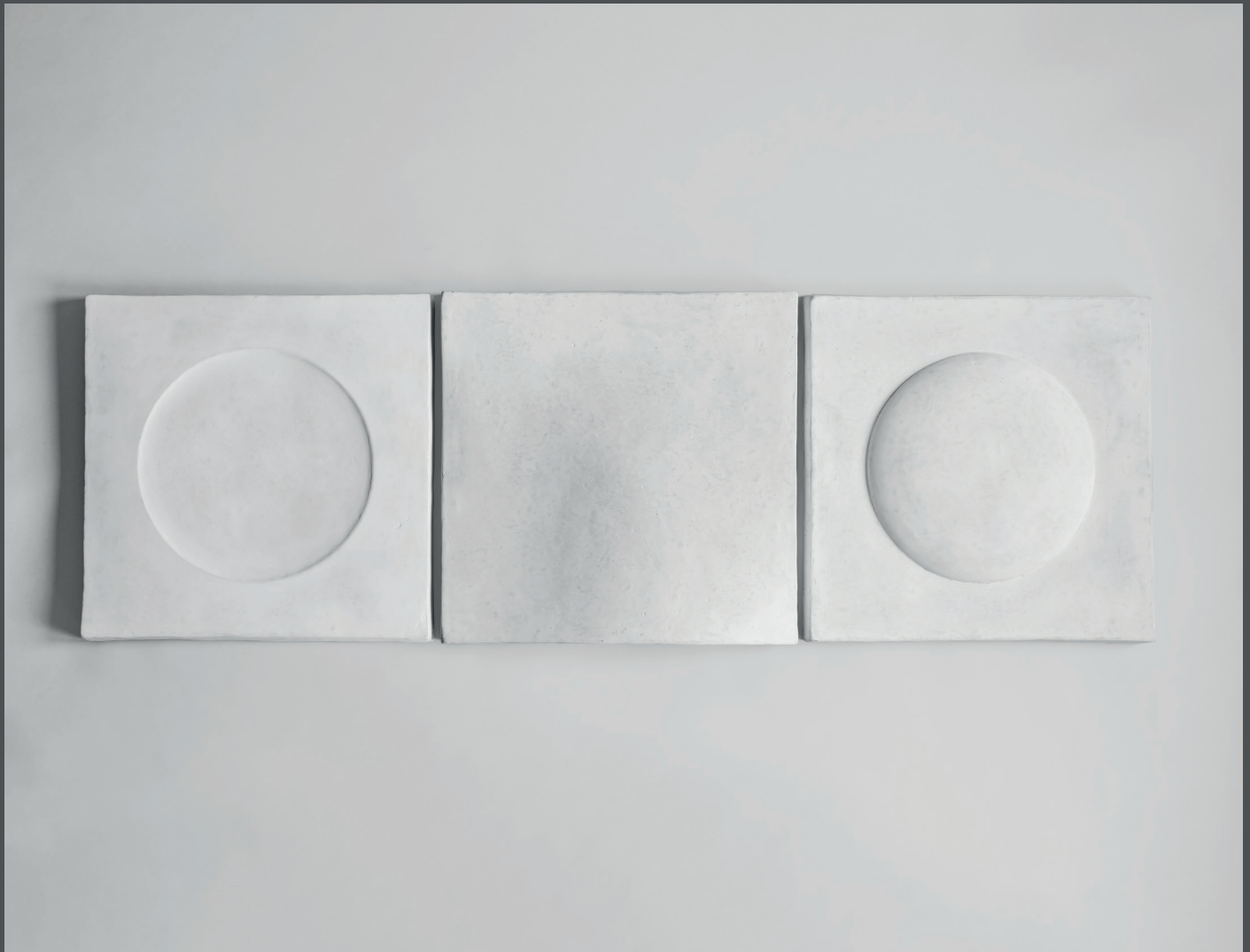
SCULPT ART, BUBBLE - COFFEE  
NO. 213004

SCULPT ART, VOID - COFFEE  
NO. 213006

SCULPT ART, SHIELD - COFFEE  
NO. 213005

# SCULPT ART CHALK WHITE

---



SCULPT ART, BUBBLE - CHALK WHITE  
NO. 213001

SCULPT ART, VOID - CHALK WHITE  
NO. 213003

SCULPT ART, SHIELD - CHALK WHITE  
NO. 213002

# PODIUM

Podium is a means to get the gallery feeling and exhibit your favorite object or piece of art at home. Inspired by architectural façade details, each podium has a carved relief on two opposing sides, creating a beautiful play of shadows changing throughout the day, depending on the direction of light. The podium can be placed both horizontally and vertically, facing a wall or standing freely in a room as it has no backside. Available in three different heights, the podium is just as suitable for use as a side or coffee table. Designed by Kristian Sofus Hansen & Tommy Hyldahl.





# PODIUM

---



PODIUM, MAXI - COFFEE

NO. 212023

PODIUM, MEDIO - COFFEE

NO. 212022

PODIUM, MINI - COFFEE

NO. 212021





# HIHAT KNOBS

One recognizes various musical instruments when looking at plated brass, burned black, brushed steel or plated bronze on a kitchen or furniture front. All knobs are sold in sets of two





the playful Hi-Hat knobs, from a classical cymbal to the bell of swinging brass instruments. The knobs are made from iron and comes in a colour, adding warmth and elegance to the wall. Each knob comes with two different screws for mounting directly in a wall or to mount on a plate. Designed by Kristian Sofus Hansen & Tommy Hyldahl.

# HIHAT KNOBS

---



HIHAT KNOBS, MINI - BRASS NO. 214061



HIHAT KNOBS, MEDIO - BRASS NO. 214062



HIHAT KNOBS, MAXI - BRASS NO. 214063



HIHAT KNOBS, MINI - BRONZE NO. 214064



HIHAT KNOBS, MEDIO - BRONZE NO. 214065



HIHAT KNOBS, MAXI - BRONZE NO. 214066



HIHAT KNOBS, MINI - STEEL NO. 223004



HIHAT KNOBS, MEDIO - STEEL NO. 223005



HIHAT KNOBS, MAXI - STEEL NO. 223006



HIHAT KNOBS, MINI - BURNED BLACK  
NO. 223001



HIHAT KNOBS, MEDIO - BURNED BLACK  
NO. 223002



HIHAT KNOBS, MAXI - BURNED BLACK  
NO. 223003





# FURNITURE

The furniture collections of 101 Copenhagen feature a wide range of products, including a collection inspired by Brutalist architecture. The colonial collection combines modern furniture at the same time. Adjacent to it is the collection inspired by the architecture of the world. These products emphasize the fine balance between sharp architecture and



ts ranging from small side tables to chairs. Roughly, the furniture is divided into two main collections: one inspired by colonial architec-  
prises wood, metal and French cane in its material catalogue and is mainly inspired by the curves significant of the period and Japanese  
Brutalism movement of the mid-20th Century where the simplified block-like structures and concrete components dominated cities around  
ectural lines and soft organic curves, creating a sculptural signature and increased comfort.

# TRIBU

Inspired by old tribal sculptures, the Tribu collection is made of a fiber concrete base with a soft linen cushion on top. Characterized by a surface of architectural concrete lamellas, Tribu emphasizes the fine balance between sharp architectural lines and a somewhat softer curve of the upholstery seat.

The Tribu collection comprises a bench and a stool cast in lightweight fiber concrete and a cushion in chalk-colored linen, creating a unique surface texture and increasing overall mobility. Each piece is hand painted to create a textured unique surface. Designed by Kristian Sofus Hansen & Tommy Hyldahl.



TRIBU BENCH - COFFEE / LINEN

NO. 231041



TRIBU STOOL - COFFEE / LINEN

NO. 231042





# KAMODO

Named after traditional Japanese clay ovens, the Kamado Chair emphasises unique Japanese aesthetics in a minimalistic fiber concrete lounge chair. Kamado means “place for the cauldron” and the traditional ovens where build directly on the ground with clay. Air openings around the floor level created the impression of a set of legs, which has been used as a reference for the front legs of the Kamado Chair. A sort of asymmetry where usually found in the first ovens, which is emphasised in Kamado Chair with the one-sided armrest for an increased and relaxing seating comfort.

The chair is cast in lightweight fiber concrete, creating a unique surface texture and increasing the overall mobility of the chair. Each piece is hand painted to create a textured and unique surface. Emphasising the fine balance between sharp architectural lines and Japanese aesthetics, the Kamado Chair is a sculptural statement piece with a compelling seating comfort. Designed by Kristian Sofus Hansen & Tommy Hyldahl.





# KAMODO CHAIR

---



# KAMODO CHAIR

---



# BIG FOOT

At first glance the Big Foot collection looks heavy and dense, yet on further inspection, the fibre concrete bench, side tables and coffee table are lightweight and mobile. With nods to brutalist architecture and the world of contemporary sculpture, the cylinder-shaped legs and textured, painted surfaces makes the collection stand out in the crowd. Designed by Kristian Sofus Hansen & Tommy Hyl Dahl.







# BIG FOOT BENCH



BIG FOOT BENCH - COFFEE

NO. 212013

# BIG FOOT SIDE TABLE



BIG FOOT TABLE, TALL - COFFEE

NO. 211003



BIG FOOT TABLE, LOW - COFFEE

NO. 211004









# BIG FOOT COFFEE TABLE



# BIG FOOT BENCH SHEEPSKIN

A quirky and contemporary addition to any interior setting and family alike, the Big Foot Stool & Bench is inviting and friendly in its sculptural, organic shape. Consisting of circular legs and a soft, round seat, all surfaces are upholstered with natural sheepskin in a soothing off-white colour or in a chalk-colored cotton and linen fabric. Designed by Kristian Sofus Hansen & Tommy Hyldahl.



BIG FOOT BENCH - SHEEPSKIN

NO. 221021







# BIG FOOT STOOL



BIG FOOT, STOOL - SHEEPSKIN

NO. 201018



BIG FOOT, STOOL - WHITE CHALK LINEN

NO. 211002

# CROWN

The collection of tables entitled Crown is cast in one piece formed as a circular tabletop carried by four-cylinder shaped legs. Standing strong and proud, the table is inspired by the bare, structural elements of Brutalist architecture, celebrating the columns, and eluding an attitude towards too many details. The chunky fiber concrete legs enable a large gap between the table edge and legs to emphasize the experience of a massive floating tabletop. The table is available in two sizes and can be used as a single standing side table or stand together as a pair of coffee tables. Designed by Kristian Sofus Hansen & Tommy Hyldahl.







# CROWN FIBER CONCRETE

---



CROWN TABLE, TALL - BONE WHITE

NO. 214017



CROWN TABLE, LOW - BONE WHITE

NO. 214016

# CROWN FIBER CONCRETE

---



CROWN TABLE, TALL - COFFEE

NO. 214015

CROWN TABLE, LOW - COFFEE

NO. 214014



# CROWN METAL



CROWN TABLE, TALL - BURNED BLACK

NO. 221026



CROWN TABLE, LOW - BURNED BLACK

NO. 221027

# TOE CHAIR

A Tribute to 70s futuristic design and space age, Toe is a lounge chair with expressive aesthetics and high seating comfort. Characterised by a sculptural approach to furniture design, the Toe Chair has a thick fluted upholstery running from seat to back, creating a linear and voluminous shape. The open chair form gives a free and easy seating experience, while the special combination of different kinds of foam ensures an overall high seating comfort. Toe Chair comes in off-white bouclé fabric or chalk-colored linen fabric. Designed by Kristian Sofus Hansen & Tommy Hyldahl.





# TOE CHAIR LINEN

---





# TOE CHAIR BOÚCLE

---







# BRICK

Inspired by architectural building components, the Brick Lamps is made of exquisite solid marble, elegantly carved in sharp geometric shapes. Each lamp is completely unique, emphasising the rich and beautiful patterns of natural stone. The polished surface softly reflects the light from the lightbulb, adding a warmth to the Brick Lamps. Brick lamps comes in two shapes and sizes, complementing each other in an architectural composition or stand alone as sculptural light object. Designed by Kristian Sofus Hansen & Tommy Hyldahl.



BRICK LAMP, TALL - CALACATTA

NO. 223081



BRICK LAMP, LOW - CALACATTA

NO. 223082





# ARC

As an ode to the Art Deco period, Arc is a transformation of lavish architectural details into a collection of minimalist furniture. Featuring a Console and Bench, Arc is characterised by steps and arches, creating a certain depth and play of shadows.

Made from a base of fiber concrete, the Arc Console features a tabletop of exquisite marble, emphasising the rich and beautiful patterns of natural stone. The polished surface softly reflects light, adding a warmth to the Arc Console.

Arc Bench is made entirely from cast fiber concrete, with the option of adding the Arc Bench for increased comfort. The rectangular Arc Bench is made of foam with linen fabric in the color chalk, creating a beautiful contrast between the smooth concrete surface and the tactile cushion.

Designed by Kristian Sofus Hansen & Tommy Hyldahl









# ARC

---



ARC CONSOLE - CALACATTA

NO. 223093



ARC BENCH CUSHION - LINEN

NO. 223092



ARC BENCH - COFFEE

NO. 223091

# TRUMPET

Inspired by Brutalism Architecture from the 1970's, the Trumpet Tables are designed as a trumpet shape with a soft curve and a circular table top. Trumpet is all about clean geometric shapes and embracing the beauty of natural materials. Made from a base of fiber concrete, the Trumpet tables features a table top of exquisite marble, emphasising the rich and beautiful patterns of natural stone. The polished surface softly reflects light, adding a warmth to the Trumpet tables. Designed by Kristian Sofus Hansen & Tommy Hyldahl



TRUMPET TABLE, TALL - CALACATTA

NO. 223095



TRUMPET TABLE, LOW - CALACATTA

NO. 223094







# TAIRU

Tairu, the Japanese word for tiles, is a modern take on mid-century tile tables. The tables come in two versions, one with tiles in calacatta and the other version made of three types of exquisite marble, Peach Wind, Calacatta Violet and Valencia Yellow, all tiles mounted into a table frame of fiber concrete. Every table is unique, due to the natural color and pattern variations within each marble stone.

Designed by Kristian Sofus Hansen & Tommy Hyldahl.



TAIRU TABLE - STRIPED

NO. 223097

# TAIRU

Tairu, the Japanese word for tiles, is a modern take on mid-century tile tables. The tables come in two versions, one with tiles in calacatta and the other version made of three types of exquisite marble, Peach Wind, Calacatta Violet and Valencia Yellow, all tiles mounted into a table frame of fiber concrete. Every table is unique, due to the natural color and pattern variations within each marble stone.

Designed by Kristian Sofus Hansen & Tommy Hyldahl.



TAIRU TABLE - CALACATTA

NO. 223096









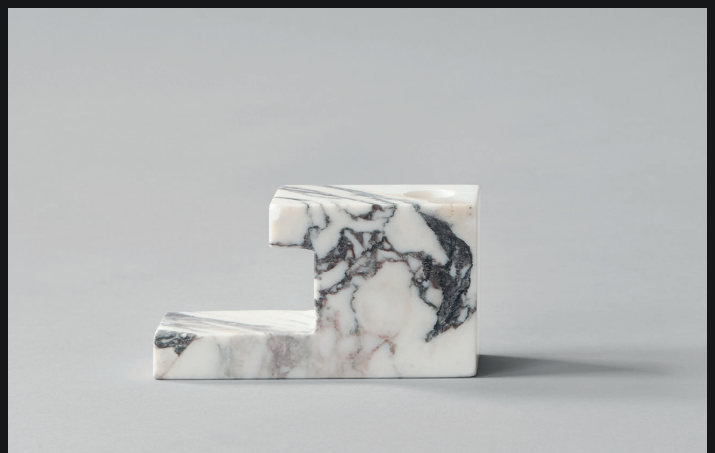
# BRICK CANDLE HOLDER

Inspired by architectural building components, the Brick Candle Holders is made of exquisite solid marble, elegantly carved in sharp geometric shapes. Each candle holder is completely unique, emphasising the rich and beautiful patterns of natural stone. The polished surface softly reflects the light from the candle, adding a warmth to the Brick Candle Holders. Brick comes in two shapes and sizes, complementing each other in an architectural composition or stand alone as sculptural object. Designed by Kristian Sofus Hansen & Tommy Hyldahl



BRICK CANDLE HOLDER, TALL - CALACATTA

NO. 223077



BRICK CANDLE HOLDER, LOW - CALACATTA

NO. 223078

# CROSS

With its geometric shapes and sharp lines, Cross is inspired by the architectural minimalism, with the attempt to create a simple and yet sculptural table of solid marble. The side table is developed in close collaboration with Indian marble suppliers in the search for the perfect homogeneous stone. Each solid marble table consequently reveals deliberate small contrasts in the texture, a surface of gorgeous, faded earth tones and a matte finish. Cross can be used as both a side table and a stool. Designed by Kristian Sofus Hansen & Tommy Hyldahl.







# COLUMN MARBLE

With its geometric and sharp lines, the Column Table is inspired by the classic architectural shapes of columns and pillars, with the attempt to create a simple and flexible side table of solid marble. Column Side Table is developed in close collaboration with Indian marble suppliers in the search for the perfect homogeneous stone. Each solid marble table consequently reveals deliberate small contrasts in the texture, a surface of gorgeous, faded earth tones and a matte finish. The Column Table is small in size and can therefore be used in many different interior schemes. The table fits perfect next to a lounge chair or combined with other side tables next to a sofa or lounge area. Due to it's minimalistic design the Column Table can also stand alone as a sculpture by itself or be used as a pedestal for exhibiting objects. Designed by Kristian Sofus Hansen & Tommy Hyldahl



COLUMN TABLE - MARBLE

NO. 221028



# COLUMN TABLE FIBER CONCRETE

With its geometric and sharp lines, the Column Table is inspired by the classic architectural shapes of columns and pillars, with the attempt to create a simple and flexible side table. The Column Table is small and can therefore be used in many different interior schemes. The table fits perfect next to a lounge chair or combined with other side tables next to a sofa or lounge area. Due to its minimalistic design the Column Table can also stand alone as a sculpture by itself or be used as a pedestal for exhibiting objects. Designed by Kristian Sofus Hansen & Tommy Hyldahl.



COLUMN TABLE - BONE WHITE NO. 223017



COLUMN TABLE - SAND

NO. 223018



COLUMN TABLE - COFFEE

NO. 223016

# SPIDER TABLE

Inspired by Brutalist Architecture from the 60s, the Spider Table is rich on architectural references. Characterised by its nine legs, the Spider Table creates a series of columns, reminiscing classic architecture with a distinctive play of shadows. The thick tabletop features a thin line around the edge, emphasising the square shape of the Spider Table. Spider Table is made of cast fiber concrete for a rich and tactile surface.

Designed by Kristian Sofus Hansen & Tommy Hyldahl



SPIDER TABLE - COFFEE

NO. 223012







# BRUTUS

Inspired by the Brutalist architecture movement of the mid-20th century, the Brutus collection comprises a dining chair, a lounge chair, a coffee table, and this stool cast in lightweight fiber concrete creating a unique surface texture increasing mobility. Drawing on traditional Japanese wooden stools, the curved seat and signature cross legs makes for a perfect extra seating around the table. Each piece is hand painted to create a textured, unique surface. Emphasizing the fine balance between sharp architectural lines and a somewhat softer curve in the back and armrest, the Brutus collection is sculptural statement pieces with a compelling seating comfort. Designed by Kristian Sofus Hansen & Tommy Hyldahl.





# BRUTUS SLIM DINING CHAIR

Inspired by the Brutalist architecture movement of the mid-20th century, the Brutus collection comprises two different kinds of dining chairs, a lounge chair, a stool, and a coffee table cast in lightweight fibre concrete creating a unique surface texture increasing mobility. Each piece is hand painted to create a textured, unique surface. Emphasizing the fine balance between sharp architectural lines and a somewhat softer curve in the back and armrest, the Brutus collection is sculptural statement pieces with a compelling seating comfort.

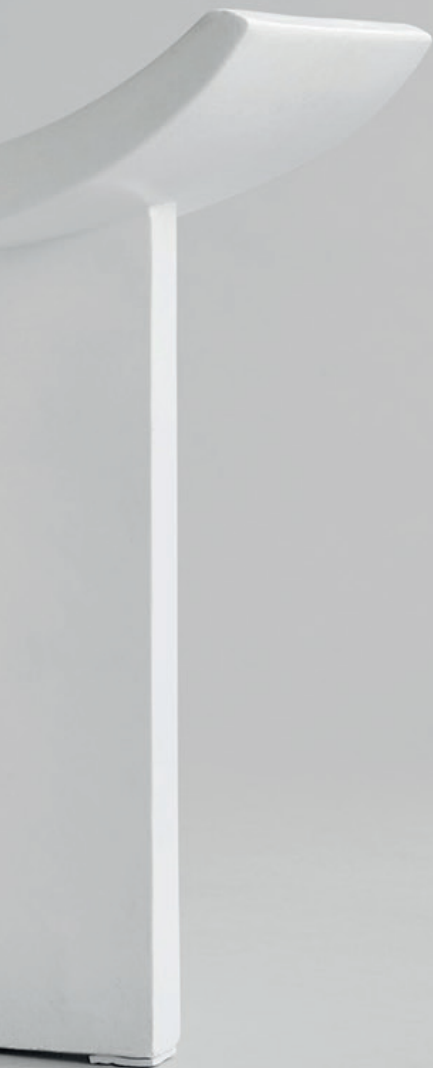
Designed by Kristian Sofus Hansen & Tommy Hyldahl.







# BRUTUS STOOL



BRUTUS STOOL - COFFEE

NO. 214012



BRUTUS STOOL - BONE WHITE

NO. 223014





# BRUTUS DINING CHAIR

---



BRUTUS DINING CHAIR - COFFEE

NO.201005



BRUTUS DINING CHAIR - BONE WHITE

NO.221023



BRUTUS DINING CHAIR - SAND

NO.212011

# BRUTUS LOUNGE CHAIR



BRUTUS LOUNGE CHAIR - COFFEE

NO.201006



BRUTUS LOUNGE CHAIR - DARK GREY

NO.213033



BRUTUS LOUNGE CHAIR - BONE WHITE

NO.221024



BRUTUS LOUNGE CHAIR - SAND

NO.212012





# BRUTUS COFFEE TABLE

---



BRUTUS COFFEE TABLE - COFFEE

NO. 201007



BRUTUS COFFEE TABLE - DARK GREY

NO. 213031



BRUTUS COFFEE TABLE - SAND

NO. 213030



BRUTUS COFFEE TABLE - BONE WHITE

NO. 221025

# BRUTUS CUSHION

---



BRUTUS DINING CUSHION - CHARCOAL LINEN

NO. 213034



BRUTUS LOUNGE CUSHION - CHARCOAL LINEN

NO. 213035



# BOW

Like a piece of architecture gone astray, the Bow bench & console draws parallels to the old aqueducts from the Roman Empire and classic architectural geometry. Repetition of arches create a beautiful, sleek, yet somewhat box silhouette and the long legs make it seem narrow and light even though the character is anything but insignificant. The bench is cast in lightweight fiber concrete to create a unique textured surface and increase mobility. It is hand painted with multiple layers of paint, creating a strong and resistant surface. Designed by Kristian Sofus Hansen & Tommy Hyl Dahl.



BOW BENCH - COFFEE

NO. 214013



BOW CONSOLE - COFFEE

NO. 203030









# SCULPT

The design of the Sculpt stool is inspired by the Brutalist architecture that emerged in the 1950s - true to the concrete building components and simplified block-like structure of the movement, the stool is cast in lightweight fibre concrete and hand painted creating a unique texture of the surface. The accompanying Sculpt cushion can be purchased for increased comfort. Designed by Kristian Sofus Hansen & Tommy Hyldahl.



SCULPT CUSHION - COGNAC LEATHER

NO. 111154



SCULPT STOOL - CONCRETE

NO. 111155

# PHANTOM

Characterized by its intentional naive and handmade expression and raw, unpolished surface, the Phantom table reveals its unique casting technique. The series is at once fragile, delicate and bulky in its appearance. The Phantom coffee tables are available in a tall and a low version made of cast iron and hand painted in a beautifully burned antique color, giving the tables a sophisticated and subtle expression. Designed by Kristian Sofus Hansen & Tommy Hyldahl.



PHANTOM TABLE, TALL - BURN ANTIQUE

NO. 111251



PHANTOM TABLE, LOW - BURN ANTIQUE

NO. 111253





# PILLAR

Inspired by the rich lustrous use of material in the 1930s Art Deco movement, the Pillar coffee table is a piece of statement furniture characterized by the contrast between a paper-thin tabletop and voluminous base. The Pillar coffee table comes in a tall and a low version, made of plated metal in three colours - brass, burned black and zinc - ensuring a sophisticated appearance that will be a unique addition to any home. The curved exterior makes this table great for classic and contemporary interiors alike. Designed by Kristian Sofus Hansen & Tommy Hyldahl.









# PILLAR SIDE TABLE

---



PILLAR TABLE, TALL - BRASS

NO. 201024



PILLAR TABLE, LOW - BRASS

NO. 201023



PILLAR TABLE, TALL - BURNED BLACK

NO. 201026



PILLAR TABLE, LOW - BURNED BLACK

NO. 201025



# LIGHTING

The lighting collection reveals the same playful and artistic approach to design as a in the collection comprising both chandeliers, pendants, and wall lamps. Sculptural various tactile and perfect lighting experience.



All other products in the 101 Copenhagen catalogue. Simplicity and minimalism meet highly detailed joints and meetings between materials  
and artistic in form with industrial references, the collection honors surfaces in brass, bronze, marble and leather, thus emphasizing

# PYGMY MATT PORCELAIN E14

Taylor-made for the lights of 101 Copenhagen, the Tala Pygmy bulb is suitable for all E14 socket lamps in the lighting collection. The bulb is only 6,5 cm in height and 2,8 cm in diameter, making sure it fits even the smallest lamps. The bulb has a light temperature of 2200 Kelvin, creating a warm and soothing illumination.



PYGMY MATT PORCELAIN E14

NO. 201



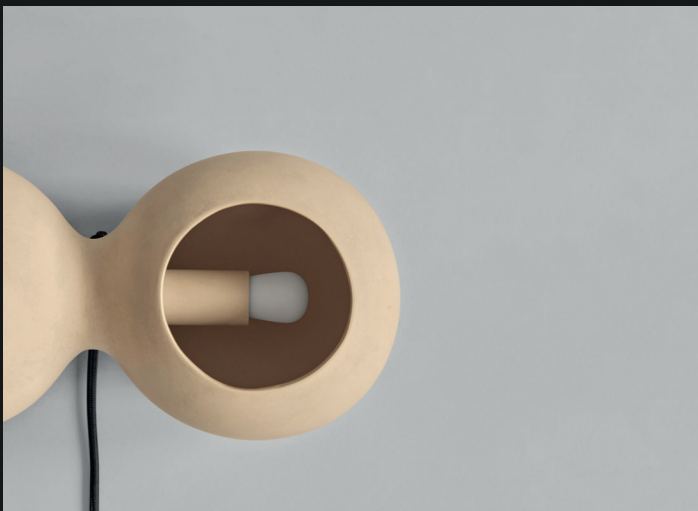


# LE DEUX

'Le Deux' the French word for 'the two' is characterized by two oval lampshades merged into each other. Slightly twisted 45 degrees in two directions, the lampshades casts light in different directions, creating a playful and sculptural light installation.

Inspired by 70's design, Le Deux is a reinterpretation of futuristic lighting design into a ceramic table lamp. Made from ceramic, Le Deux emphasizes the natural beauty of its material, highlighting the tactile and textured ceramic surface. As it is a hand glazed nature product, the colours may vary slightly.

Designed by Kristian Sofus Hansen & Tommy Hyldahl.









# FUNGUS TABLE LAMP

With its mushroom shaped design, the Fungus Table Lamp creates a unique illumination in any interior setting. Inspired by 70's design, Fungus is a reinterpretation of futuristic lighting design into a ceramic table lamp. Made from ceramic, Fungus emphasizes the natural beauty of its material, highlighting the tactile and textured ceramic surface.

Fungus comes with a ceramic lampshade placed on top of a metal frame, mounted to a cone shaped lamp base. Everything, except the metal frame, is made of ceramic. As it is a hand glazed nature product, the colours may vary slightly.

Designed by Kristian Sofus Hansen & Tommy Hyldahl.



# COBRA TABLE LAMP

A tribute to the Cobra Arts Movement of the 1960s, the Cobra Table Lamp is the epitome of quirky vases that will add joy to any interior setting. Think whimsical, soft and organic shapes unmistakably reminiscent of a human silhouette. True to the Cobra artists way of working, the design takes its starting point in naive hand sketches leading to bodily silhouette. As the ceramic lamp base is a hand glazed natural product, the colours may vary slightly. Designed by Kristian Sofus Hansen & Tommy Hyldahl.



COBRA TABLE LAMP - DARK GREY

NO. 231024



COBRA TABLE LAMP - SAND

NO. 231023





# SITTING MAN

Reminiscing the silhouette of a sitting man, The Sitting Man is a light sculpture with an illuminating glass sphere positioned in the middle of a spiralling composition. The complex structure is a fine tuned balance between structure and weight, aesthetic and function, with the attempt of challenging our perception of form and light. When turned off the ceramic material is in the same nuance. But when lit the structure reflects the light in different directions. The Sitting Man comes in two sizes, a floor lamp and a table lamp. Designed by Kristian Sofus Hansen & Tommy Hyl Dahl.



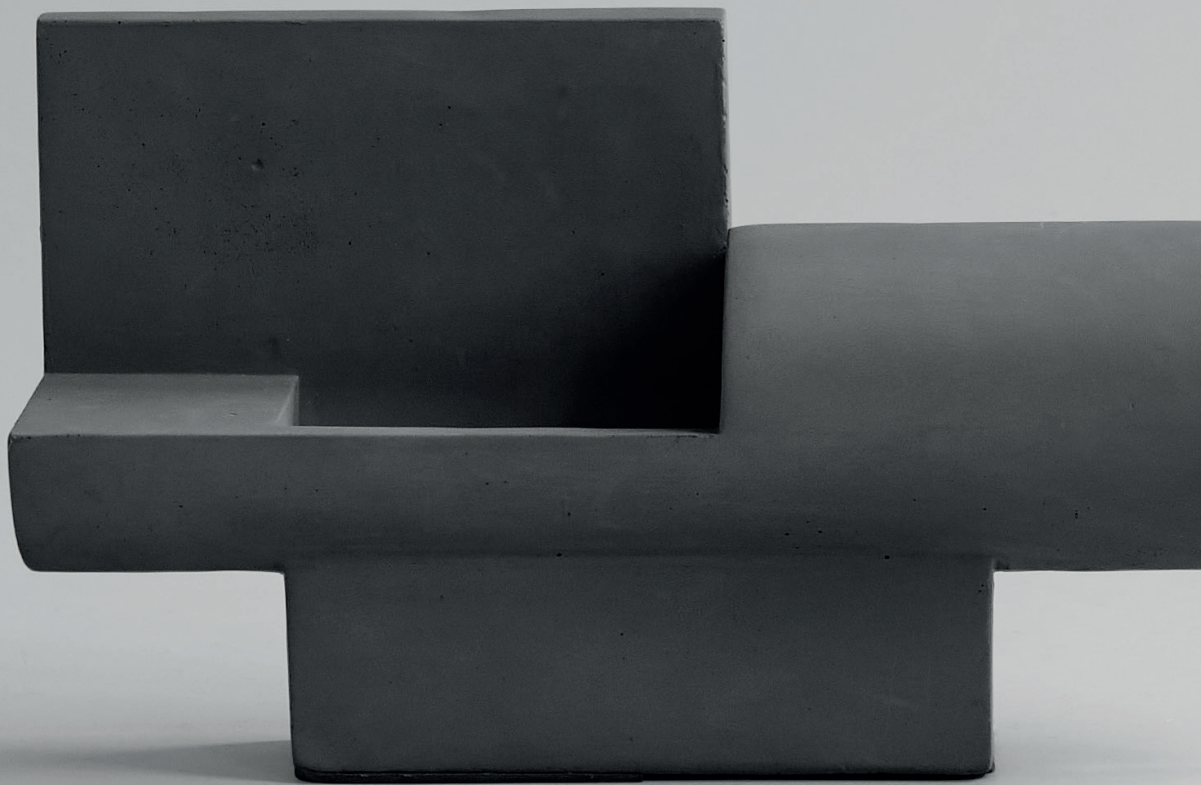
SITTING MAN, BIG - DARK GREY

NO. 223027



SITTING MAN, MINI - DARK GREY

NO. 223028



# BRUTALIST

The slender, elongated form of the Brutalist lamp is inspired by geometric angles in architectural masterpieces by Le Corbusier and Frank Lloyd Wright. Cast in lightweight concrete it challenge our perception of form in numerous manners - its composition of round and square elements makes for a both hidden and maximization of the light source. When turned off the concrete material is in the same nuance, but when lit the light magically reflects upwards. Designed by Kristian Sofus Hansen & Tommy Hyldahl.



# STICK TABLE LAMP

Influenced by minimalism art, the Stick collection is all about combining light and sculptures into graphic lighting design. Named after its 'Stick' lampshade, each lamp is characterized by an illuminating white acrylic tube. The white acrylic tube holds an inbuilt LED light source, with details of plated metal fittings at each end of the tube. Mounted on simple and geometric metal fixtures, the Stick lamps creates an almost graphic expression. The Stick collection includes a table lamp, wall lamp and pendant. Every lamp comes with an inbuilt LED light source.

Designed by Kristian Sofus Hansen & Tommy Hyldahl.



STICK TABLE LAMP - BRONZE



NO. 231051







# STICK WALL LAMP

Influenced by minimalism art, the Stick collection is all about combining light and sculptures into graphic lighting design. Named after its 'Stick' lampshade, each lamp is characterized by an illuminating white acrylic tube. The white acrylic tube holds an inbuilt LED light source, with details of plated metal fittings at each end of the tube. Mounted on simple and geometric metal fixtures, the Stick lamps creates an almost graphic expression. The Stick collection includes a table lamp, wall lamp and pendant. Every lamp comes with inbuilt LED light source.

Designed by Kristian Sofus Hansen & Tommy Hyldahl.



STICK WALL LAMP - BRONZE

NO. 231053

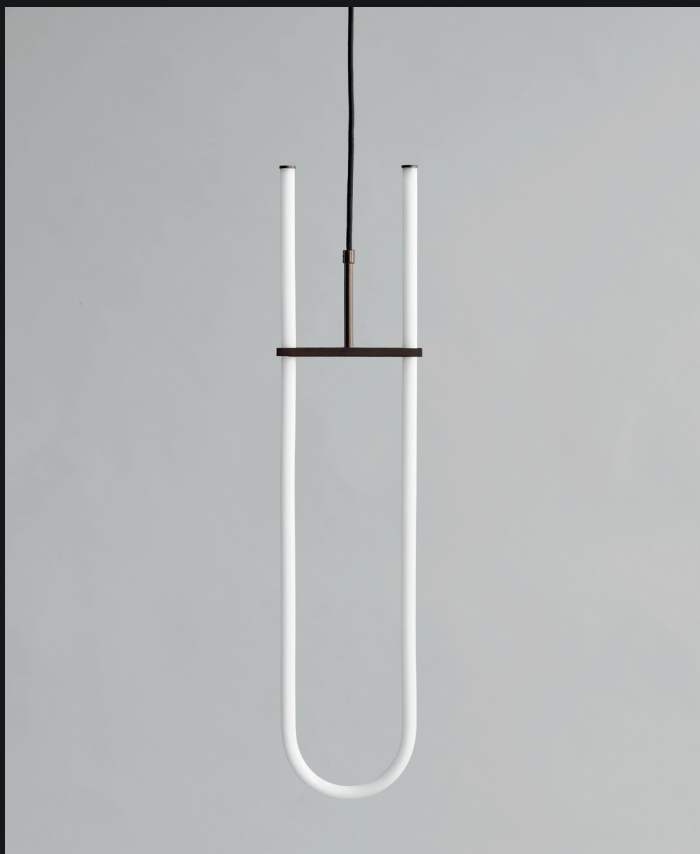
# STICK CURVE PENDANT

Influenced by minimalism art, the Stick collection is all about combining light and sculptures into graphic lighting design.

Named after its 'Stick' lampshade, each lamp is characterized by an illuminating white acrylic tube. The white acrylic tube holds an inbuilt LED light source, with details of plated metal fittings at each end of the tube. Mounted on simple and geometric metal fixtures, the Stick lamps creates an almost graphic expression.

The Stick collection includes a table lamp, wall lamp and pendant. Every lamp comes with inbuilt LED light source.

Designed by Kristian Sofus Hansen & Tommy Hyldahl.



CURVE PENDANT - BRONZE

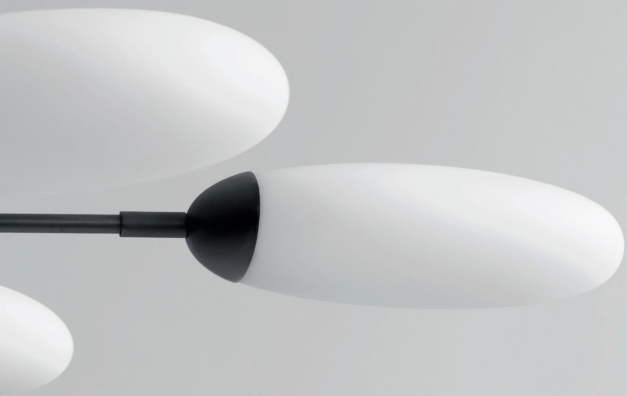
NO. 231056





# SALON

Inspired by Art Deco, Salon Chandelier is a minimalistic interpretation of classic mid-20th century chandeliers. Salon is characterised by six illuminating lampshades elegantly positioned in a lightweight metal construction, forming the outer shape of a hexagon. Each arm is mounted to riffled center piece, adding a shimmering and discreet detail to the lamp. The lampshades are made of mouth blown opal glass with a mat white finish, creating a warm illumination in any ceiling or room. The lampshades has a flat oval shape, which enables the lamp to be positioned close to the ceiling, without having the lampshades touching the ceiling. The slim oval lampshades changes according to the view angle, adding a sculptural and playful detail to the chandelier. Salon Chandelier comes in two sizes, Medio and Grande. The chandelier is made of iron with bronze plating and lampshades of white opal glass. Designed by Kristian Sofus Hansen & Tommy Hyldahl.







# SALON CHANDELIER

---



SALON CHANDELIER, GRANDE - OPAQUE

NO.221072



SALON CHANDELIER - OPAQUE

NO.221071

# DROP CHANDELIER

You almost feel the movement of the Drop Chandelier. As a free flowing sculpture it takes in the space and insists on a life of its own. While The Drop Chandelier collection honors modernist lamp designs of the 1950s, it also celebrates an experimental, innovative approach with its gently curving shades and 14 flexible and functional adjustable arms - creating countless options, variations and angles. The beautifully crafted oxidized, plated and perforated metal body is subsequently hand brushed and the lamp brightens up the room elegantly with a warm, pleasant light. Designed by Kristian Sofus Hansen & Tommy Hyldahl.





# DROP CHANDELIER



DROP CHANDELIER - BRASS

NO.110049



DROP CHANDELIER MINI - BRASS

NO.203040

# DROP CHANDELIER



DROP CHANDELIER - BURNED BLACK

NO.204001

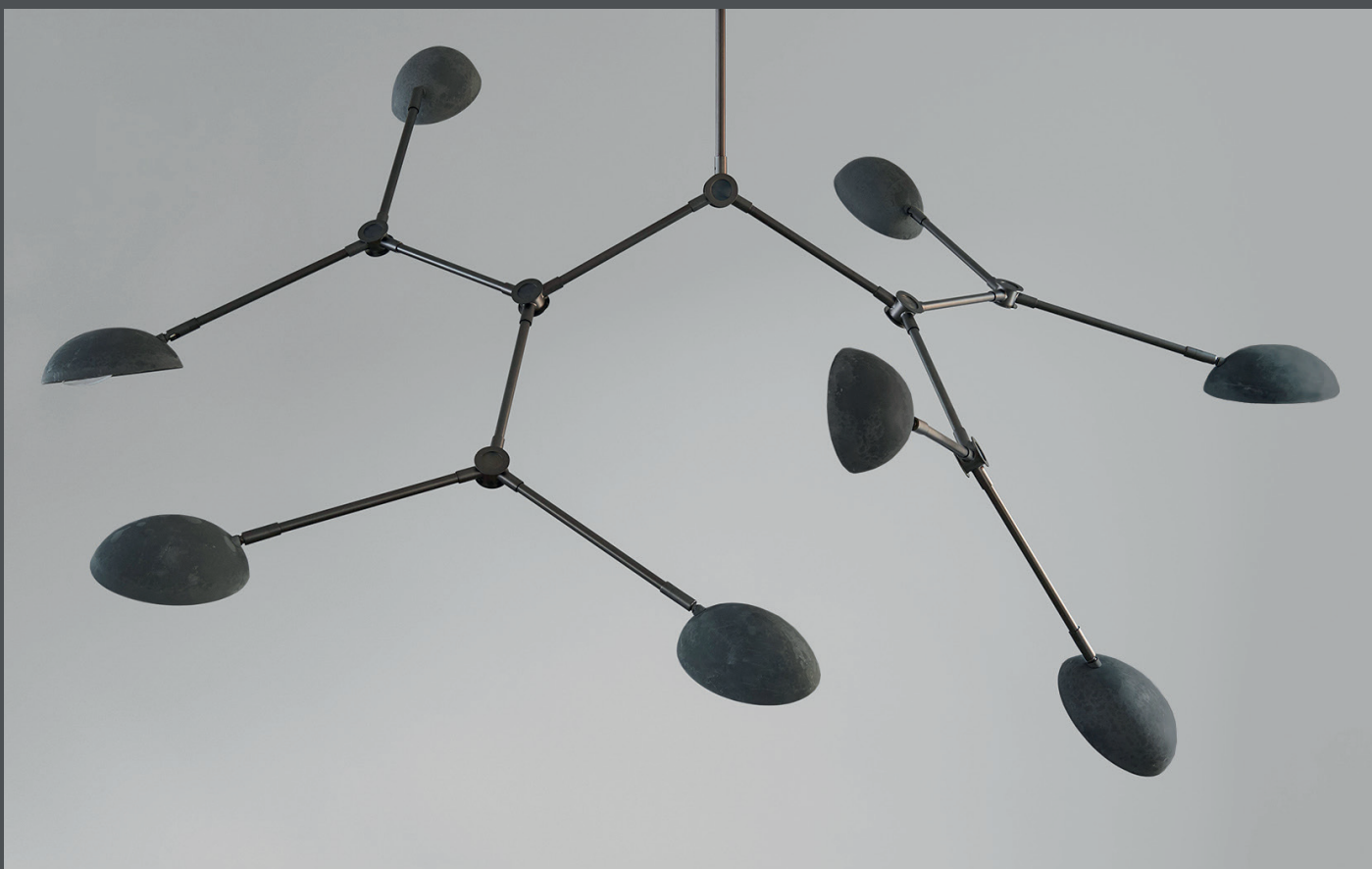


DROP CHANDELIER MINI - BURNED BLACK

NO.214021

# DROP CHANDELIER

---



DROP CHANDELIER - OXIDIZED

NO.111098



DROP CHANDELIER MINI - OXIDIZED

NO.211001

# DROP CHANDELIER

---



DROP CHANDELIER - BRONZE

NO.214022



DROP CHANDELIER MINI - BRONZE

NO.214023

# TOTEM FLOOR LAMP

Standing tall as an ancient symbol, The Totem Floor Lamp is a sculptural lighting design, embodying the core elements of 101 Copenhagen lighting design.

Hidden between two circular metal screens with slightly curved endings, the lightsource is intensified and expressed in an indirect lighting experience, which changes according to the viewpoint and movement around the lamp. The almost floating lampshades are lifted up by a metal pole, mounted to a half circular metal base.

Designed by Kristian Sofus Hansen & Tommy Hyldahl



TOTEM FLOOR LAMP - BRONZE

NO. 223021

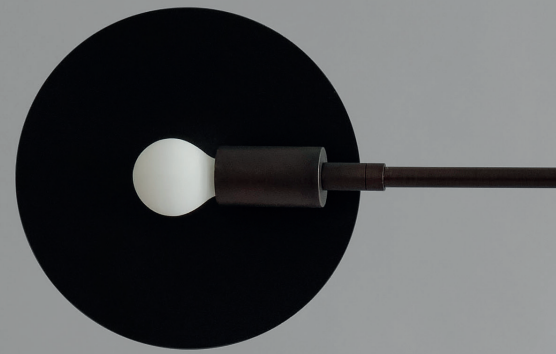




# SAHN CHANDELIER

Inspired by 70s futuristic design and space age, the Sahn Chandelier is all about movement and flexibility. Each lamp arm and lampshade can turn and twist in different directions, emphasising a unique and sculptural illumination of the room. Sahn, the Japanese word for three, is characterised by the use of three different lampshades, some of which has become synonymous with classic 101 Copenhagen lighting design. Each of the three lampshades offers a different light experiences, adding a rich and playful feature to the lamp.

Designed by Kristian Sofus Hansen & Tommy Hyldahl





# DROP CHANDELIER BULP

Its detailed suspension has industrial and maritime references and is beautifully crafted in plated metal, which is subsequently hand brushed to obtain the perfect finish to complement the circular opal glass lampshades. While The Drop Chandelier Bulp collection honors the iconic, modernist lamp designs of the 1950s, it also celebrates an experimental, innovative approach with its 14 flexible and functional adjustable arms - creating countless options and variations. The chandelier elegantly brightens the room with a warm light and becomes a sculptural object in the ceiling. Designed by Kristian Sofus Hansen & Tommy Hyldahl.







# DROP CHANDELIER BULP



DROP CHANDELIER BULP - GREY

NO.111093



DROP CHANDELIER BULP, MINI - GREY

NO.193004

# DROP WALL LAMP BULP

Inspiration from the industrial and maritime worlds are evident in the Drop Wall Lamp, which is an extension to the Drop Chandelier Bulp collection. Characterized by the same lighting fixtures, the circular opal glass lampshades and the same hand brushed plated metal finish as the chandelier, the wall lamp stands out in any room. The dimmable lighting can be adjusted with the button, elegantly positioned on the lamp base. Designed by Kristian Sofus Hansen & Tommy Hyldahl.



DROP WALL LAMP BULP - GREY

NO. 203042





# STINGRAY

Inspired by the Stingray fish, the Stingray lampshade is all about the contrast between soft shapes and sharp lines. The almost floating lampshade is the centrepiece of the Stingray collection, elegantly featured in two chandeliers, a table lamp and floor lamp. The lampshade is designed to hide and expose the lightsource according to the viewpoint, creating a flexible and artistic light experience.

The Stingray table and floor lamp is characterised by three legs, adding a certain rhythm and simplicity. The lampshade is mounted to an adjustable lamp arm, elegantly balancing the Stingray lampshade opposite a sphere shape. Designed by Kristian Sofus Hansen & Tommy Hyldahl

STINGRAY TABLE LAMP - BRONZE

NO. 223024

STINGRAY FLOOR LAMP - BRONZE

NO. 223025





# STINGRAY CHANDELIER BRONZE

Inspired by the Stingray fish, the Stingray lampshade is all about the contrast between soft shapes and sharp lines. The almost floating lampshade is the centrepiece of the Stingray collection, elegantly featured in two chandeliers, a table lamp and floor lamp. The lampshade is designed to hide and expose the lightsource according to the viewpoint, creating a flexible and artistic light experience.

The Stingray table and floor lamp is characterised by three legs, adding a certain rhythm and simplicity. The lampshade is mounted to an adjustable lamp arm, elegantly balancing the Stingray lampshade opposite a sphere shape.

Designed by Kristian Sofus Hansen & Tommy Hyldahl







# STINGRAY CHANDELIER



STING CHANDELIER, GRANDE - BRONZE

NO.223023



STING CHANDELIER - BRONZE

NO.213055





# STINGRAY CHANDELIER BRASS

You almost feel the movement of the Drop Chandelier. As a free flowing sculpture, it takes in the space and insists on a life of its own - just like the floating movement of Stingray fish which is the inspiration behind the design of the lampshades. While The Drop Chandelier collection honors modernist lamp designs of the 1950s, it also celebrates an experimental, innovative approach with its gently curving shades and 14 flexible and functional adjustable arms - creating countless options, variations, and angles. The beautifully crafted oxidized, plated, and perforated metal body is subsequently hand brushed and the lamp brightens up the room elegantly with a warm, pleasant light. Designed by Kristian Sofus Hansen & Tommy Hyldahl.



# BULLET CHANDELIER

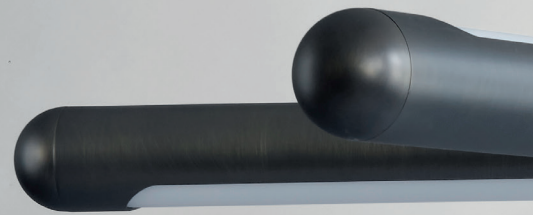
The Bullet collection is characterized by a closed tubular metal lampshade with a smooth carved opening. The opening is covered in a curved piece of opal glass, filtering the light from the light source inside. The collection comprises a chandelier, a pendant and a wall lamp - all made in bronze plated iron and opal glass, creating unique and sculptural lighting experiences inspired by Art Deco.

The chandelier has six adjustable arms positioned in a flexible hexagon setting and mounted on a rifled centerpiece, adding a shimmering and reflective quality to the lamp. Two of the chandelier arms are turned upwards to ensure lighting towards the ceiling, while the other lampshades are facing downwards to brighten up the space below the chandelier. The linear design of the pendant is sleek and is an ode to the industrial lamps of 1960s kitchens. The lampshade has two carved openings, filtering the light through white opal glass to the space below the lamp. The tubular lampshade is mounted to a sleek metal wall cup and placed directly to the wall in a vertical position. Designed by Kristian Sofus Hansen & Tommy Hyldahl.



BULLET CHANDELIER - BRONZE

NO. 213051







# BULLET PENDANT



BULLET PENDANT - BRONZE

NO. 213053

# BULLET WALL LAMP







# PIVOT

Named after the French word for an object turning around its own axe or center point, the Pivot lamp is a new classic. With its rotating aluminum shade, it can highlight and project onto an object or part of a space. In a simple, yet refined design and a brushed bronze colour tone, the lamp creates a warm, inviting atmosphere and magically plays with the contrast between light and shadows. The lampshade fits perfectly into the square iron base, enabling easy and smooth rotation. Designed by Kristian Sofus Hansen, Malo Sannié & Tommy Hyldahl.





# PEARL

Pearl is a collection of lamps inspired by ancient Japanese lanterns. The lantern shaped light source of opal glass is half hidden behind a flexible metal screen. The perforated metal screen filters the light and can be turned around to create unique lighting installations. The lampshade is mounted to a sleek metal frame, adding a certain lightness to the lamp. Pearl is made of plated metal subsequent hand brushed and comes in a pendant and floor lamp. Designed by Kristian Sofus Hansen & Tommy Hyldahl.



PEARL PENDANT - BRASS

NO. 201008



PEARL FLOOR LAMP - BRASS

NO. 201009

# NO. 2

The No. 2 pendant is all about the details and proportions. It has a stunning Art Deco inspired socket detail with vertical lines that add a shimmering quality to the lamp and the warm light coming from the circular opal glass lampshade. Merged, the two elements are extremely elegant, timeless and quietly glamorous all at once. The No. 2 pendant can be used as a single pendant or in a collection of several pendants together. Designed by Kristian Sofus Hansen & Tommy Hyldahl.



NO. 2 PENDANT - BRASS

NO. 193019



NO. 2 PENDANT - BRONZE

NO. 214028





# THE MOON FLOOR LAMP

The Moon is a minimalistic floor lamp constructed from geometric shapes, where each component is perfectly balanced to one another. The lamp has two light sources placed as compositional fix points along an oxidized brass arm. A large circular lampshade hangs from the arm as a floating reflector in the space. The brushed brass lampshade is illuminated on both sides, creating a warm and soft lighting. The Moon lamp is mounted to a cylindrical base of unpolished grey marble, stabilizing the structure. Designed by Kristian Sofus Hansen & Tommy Hyldahl.



THE MOON FLOOR LAMP - BRASS/MARBLE

NO. 111105

# AD

The round, geometric shape and sculptural construction of the AD Floor Lamp is influenced by the austere Brutalist movement of the mid-20th Century. The oxidized surface is textured and almost resembling concrete as a nod to the architectural source of inspiration. Thin aluminum plates comprising the plate geometry shape enclose the light source providing a smooth light scattering, the lamp is pleasant yet functional in every setting. It looks paper thin from some angles and solid from others playing with the subtle movement of light. Designed by Kristian Sofus Hansen & Tommy Hyl Dahl.



AD FLOOR LAMP, OXIDIZED

No. 111107

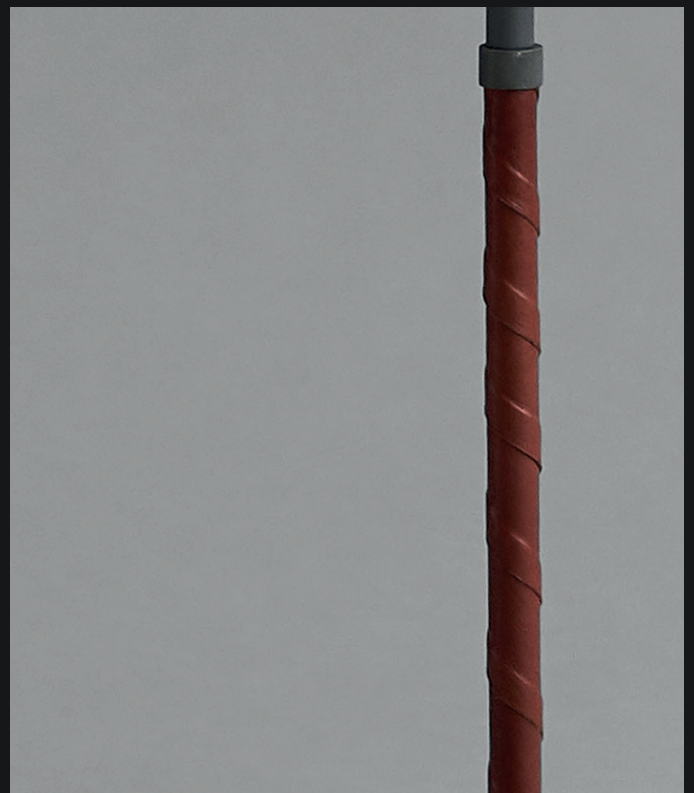






# BULL TABLE LAMP

Inspired by the characteristic use of animal pictures in Danish Modernism from the 1940s to 1960s, the Bull lamp takes its name after the bull-like lampshades of opal glass, providing a smooth light scattering and a characteristic expression. The body consists of an unpolished grey marble base with a lamp arm in oxidized aluminum covered in spun cognac coloured leather, and an upper part in oxidized aluminum that stands in beautiful contrast to the light, translucent glass. This subtle interaction of materials makes the Bull lamp much more than merely a source of light. Designed by Kristian Sofus Hansen & Tommy Hyldahl.



BULL TABLE LAMP - OXIDIZED

NO. 111095

# BULL FLOOR LAMP

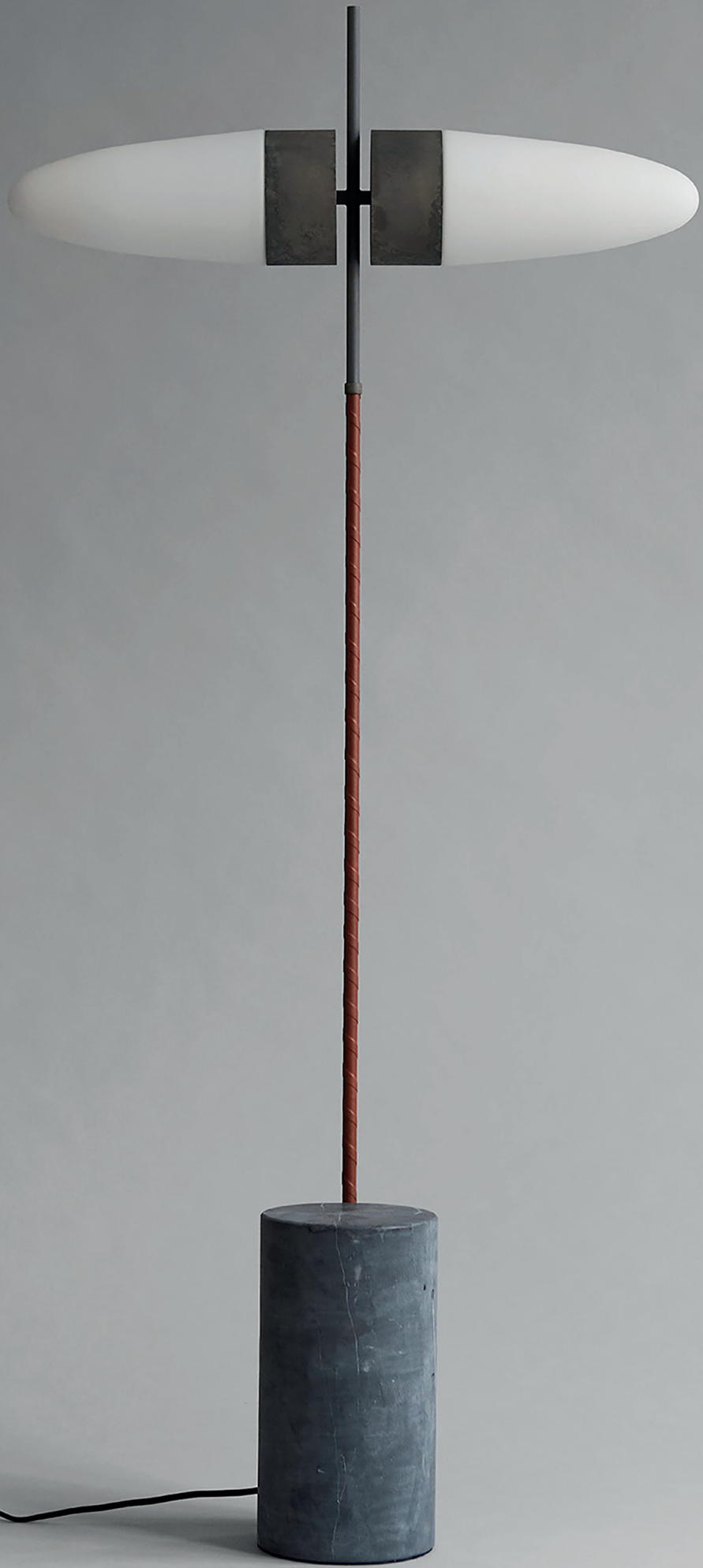
Inspired by the characteristic use of animal pictures in Danish Modernism from the 1940s to 1960s, the Bull lamp takes its name after the bull-like lampshades of opal glass, providing a smooth light scattering and a characteristic expression. The body consists of an unpolished grey marble base with a lamp arm in oxidized aluminum covered in spun cognac coloured leather, and an upper part in oxidized aluminum that stands in beautiful contrast to the light, translucent glass. This subtle interaction of materials makes the Bull lamp much more than merely a source of light. Designed by Kristian Sofus Hansen & Tommy Hyldahl.



BULL FLOOR LAMP - OXIDIZED

NO. 111094







# DUSK TABLE LAMP

An art piece in itself, the Dusk and Dawn lamp is a unique source of light that lets the mind wander to planets, eclipses and Brutalist architectural details. The layered shades playfully divide the light into a rhythm of exposure, contributing to an intimate and cozy atmosphere. The square, raw oxidized aluminum base meets the two rounded aluminum shades which, richly textured and with an almost concrete like surface, gives a certain depth to the smooth light. Designed by Nicolaj Nød-desbo & Tommy Hyl Dahl.



# DAWN FLOOR LAMP

An art piece in itself, the Dusk and Dawn lamp is a unique source of light that lets the mind wander to planets, eclipses and Brutalist architectural details. The layered shades playfully divide the light into a rhythm of exposure, contributing to an intimate and cozy atmosphere. The square, raw oxidized aluminum base meets the two rounded aluminum shades which, richly textured and with an almost concrete like surface, gives a certain depth to the smooth light. Designed by Nicolaj Nørdesbo & Tommy Hyldahl.



DAWN FLOOR LAMP - OXIDIZED

NO. 111088







# DUSK WALL LAMP

An art piece in itself, the Dusk and Dawn lamp is a unique source of light that lets the mind wander to planets, eclipses and Brutalist architectural details. The layered shades playfully divide the light into a rhythm of exposure, contributing to an intimate and cozy atmosphere. The two rounded aluminum shades which, richly textured and with an almost concrete like surface, gives a certain depth to the smooth light. Designed by Kristian Sofus Hansen & Tommy Hyldahl.



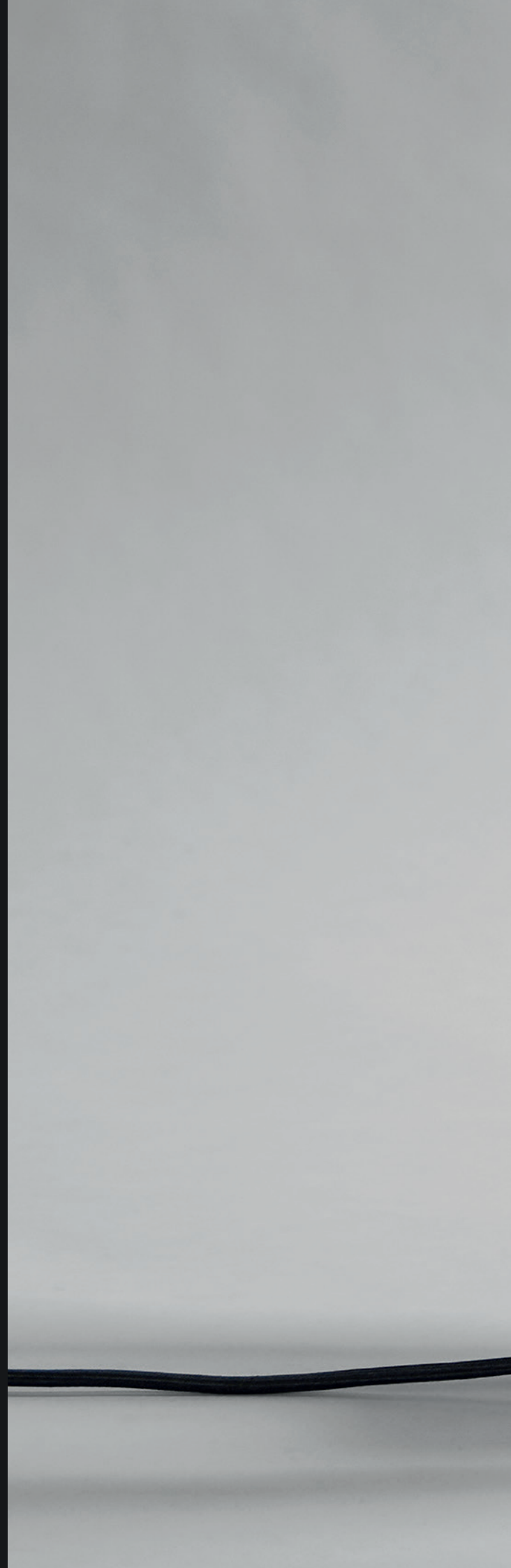
DUSK WALL LAMP - BURNED BLACK

NO.223022

# CLAM

The Clam series consists of a table, ceiling and a wall lamp characterized by its two opposing shades playing with direct and indirect lighting. In a very Japanese inspired manner, the minimalist lamp smoothly reflects the light to both sides of the gently curved metal screens. The lamp is beautifully crafted in oxidized, plated, and subsequent hand brushed metal.

Designed by Kristian Sofus Hansen & Tommy Hyldahl.





# CLAM WALL LAMP

---



CLAM WALL LAMP - BRASS

NO. 214025



CLAM WALL LAMP - BURNED BLACK

NO. 214026



CLAM WALL LAMP - BRONZE

NO. 214024



CLAM WALL LAMP - OXIDIZED

NO. 214027

# CLAM TABLE LAMP

---



CLAM TABLE LAMP - BURNED BLACK

NO. 110048



CLAM TABLE LAMP - OXIDIZED

NO. 110047



CLAM TABLE LAMP - BRASS

NO. 110046



CLAM TABLE LAMP - BURNED BLACK

NO. 110048





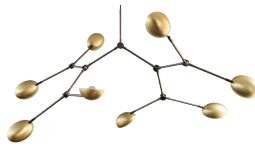


COLLECTION OVERVIEW

# LIGHTING



**DROP CHANDELIER**  
BRONZE  
PLATED METAL  
NO 214022  
L155 / W120 / H91 CM  
1 PCS



**DROP CHANDELIER**  
BRASS  
PLATED METAL  
NO 110049  
L155 / W120 / H91 CM  
1 PCS



**DROP CHANDELIER**  
OXIDIZED  
METAL  
NO 111098  
L155 / W120 / H91 CM  
1 PCS



**DROP CHANDELIER**  
BURNED BLACK  
PLATED METAL  
NO 204001  
L155 / W120 / H91 CM  
1 PCS



**DROP CHANDELIER**  
MINI - BRONZE  
PLATED METAL  
NO 214023  
L87 / W71 / H36 CM  
1 PCS



**DROP CHANDELIER**  
MINI - BRASS  
PLATED METAL  
NO 203040  
L87 / W71 / H36 CM  
1 PCS



**DROP CHANDELIER**  
MINI - OXIDIZED  
METAL  
NO 211001  
L87 / W71 / H36 CM  
1 PCS



**DROP CHANDELIER**  
MINI - BURNED BLACK  
PLATED METAL  
NO 214021  
L87 / W71 / H36 CM  
1 PCS



**STINGRAY CHANDELIER**  
BRASS  
PLATED METAL  
NO 213054  
L156 / W120 / H120 CM  
1 PCS



**STINGRAY CHANDELIER**  
BRONZE  
PLATED METAL  
NO 213055  
L156 / W120 / H120 CM  
1 PCS



**STINGRAY CHANDELIER**  
GRANDE - BRONZE  
PLATED METAL  
NO 223023  
L168 / W145 / H125 CM  
1 PCS



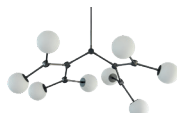
**STINGRAY FLOOR LAMP**  
BRONZE  
PLATED METAL  
NO 223025  
L106 / W21 / H145 CM  
1 PCS



**STINGRAY TABLE LAMP**  
- BRONZE  
PLATED METAL  
NO 223024  
L56,5 / W21 / H53 CM  
1 PCS



**DROP CHANDELIER**  
BULP - GREY  
OPAL GLASS/PLATED METAL  
NO 111093  
L155 / W120 / H91 CM  
1 PCS



**DROP CHANDELIER**  
BULP MINI - GREY  
OPAL GLASS/PLATED METAL  
NO 193004  
L87 / W71 / H36 CM  
1 PCS



**DROP WALL LAMP**  
BULP - GREY  
OPAL GLASS/PLATED METAL  
NO 203042  
L17 / W17 / H66 CM  
1 PCS



**SAHN CHANDELIER**  
BRONZE  
OPAL GLASS/PLATED METAL  
NO 223026  
L25 / W125 / H58 CM  
1 PCS

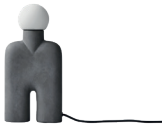
# LIGHTING

INTRODUCING

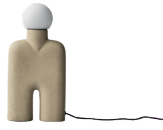
INTRODUCING

INTRODUCING

INTRODUCING



**COBRA TABLE LAMP**  
DARK GREY  
CERAMIC / OPAL GLASS  
NO 231024  
L17 / W9 / H35 CM  
1 PCS



**COBRA TABLE LAMP**  
SAND  
CERAMIC / OPAL GLASS  
NO 231023  
L17 / W9 / H35 CM  
1 PCS



**LE DEUX TABLE LAMP**  
SAND  
CERAMIC  
NO 231022  
L32 / W15 / H14,5 CM  
1 PCS



**FUNGUS TABLE LAMP**  
SAND  
CERAMIC  
NO 231021  
L33,5 / W33,5 / H35 CM  
1 PCS



**BRUTALIST LAMP**  
GREY  
CONCRETE  
NO 111154  
L40 / W10 / H21 CM  
1 PCS



**SITTING MAN, BIG**  
DARK GREY  
CERAMIC / OPAL GLASS  
NO 223027  
L22 / W13 / H70 CM  
1 PCS



**SITTING MAN, MINI**  
DARK GREY  
CERAMIC / OPAL GLASS  
NO 223028  
L16 / W9,5 / H42,5 CM  
1 PCS



**BULL FLOOR LAMP**  
OPAL GLASS / OXIDIZED  
ALUMINUM / MARBLE  
NO 111094  
L65 / W15 / H140 CM  
1 PCS



**BULL TABLE LAMP**  
OPAL GLASS / OXIDIZED  
ALUMINUM / MARBLE  
NO 111095  
L38 / W12 / H50 CM  
1 PCS



**BRICK LAMP, TALL**  
CALACATTA  
MARBLE  
NO 223081  
L12,5 / W5 / H10,5 CM  
1 PCS



**BRICK LAMP, LOW**  
CALACATTA  
MARBLE  
NO 223082  
L14 / W5 / H7,5 CM  
1 PCS



**AD FLOOR LAMP**  
OXIDIZED  
METAL  
NO 111107  
L60 / W12 / H62 CM  
1 PCS



**DUSK TABLE LAMP**  
OXIDIZED  
METAL / CONCRETE  
NO 111089  
L20 / W30 / H50 CM  
1 PCS



**DAWN FLOOR LAMP**  
OXIDIZED  
METAL / CONCRETE  
NO 111088  
L30 / W40 / H168 CM  
1 PCS

# LIGHTING

---



**CLAM WALL LAMP**  
BRONZE  
PLATED METAL  
NO 214024  
L14 / W22 / H26 CM  
1 PCS



**CLAM WALL LAMP**  
BRASS  
PLATED METAL  
NO 214025  
L14 / W22 / H26 CM  
1 PCS



**CLAM WALL LAMP**  
BURNED BLACK  
PLATED METAL  
NO 214026  
L14 / W22 / H26 CM  
1 PCS



**CLAM WALL LAMP**  
OXIDIZED  
METAL  
NO 214027  
L14 / W22 / H26 CM  
1 PCS



**CLAM TABLE LAMP**  
BRASS  
PLATED METAL  
NO 110046  
L30 / W15 / H43,5 CM  
1 PCS



**CLAM TABLE LAMP**  
OXIDIZED  
METAL  
NO 110047  
L30 / W15 / H43,5 CM  
1 PCS



**CLAM TABLE LAMP**  
BURNED BLACK  
PLATED METAL  
NO 110048  
L30 / W15 / H43,5 CM  
1 PCS



**TOTEM FLOOR LAMP**  
BRONZE  
PLATED METAL  
NO 223021  
L50 / W22 / H165 CM  
1 PCS



**PEARL PENDANT**  
BRASS  
OPAL GLASS/PLATED METAL  
NO 201008  
L35 / W35 / H54,5 CM  
1 PCS



**PEARL FLOOR LAMP**  
BRASS  
OPAL GLASS/PLATED METAL  
NO 201009  
L40 / W39 / H140 CM  
1 PCS



**THE MOON FLOOR LAMP**  
BRASS / MARBLE  
NO 111105  
L63 / W65 / H188 CM  
1 PCS



**SALON CHANDELIER  
GRANDE - OPAQUE**  
OPAL GLAS / PLATED METAL  
NO 221072  
L130 / W115 / H32 CM  
1 PCS



**SALON CHANDELIER  
OPAQUE**  
OPAL GLAS / PLATED METAL  
NO 221071  
L98 / W86 / H32 CM  
1 PCS



**NO. 2 PENDANT**  
BRASS  
OPAL GLASS/PLATED METAL  
NO 193019  
L13,5 / W13,5 / H30 CM  
1 PCS



**NO. 2 PENDANT**  
BRONZE  
OPAL GLASS/PLATED METAL  
NO 214028  
L13,5 / W13,5 / H30 CM  
1 PCS

## LIGHTING

---

INTRODUCING



**CURVE PENDANT**  
BRONZE  
PLATED METAL / ACRYLIC  
NO 231056  
L16 / W2 / H70 CM  
1 PCS

INTRODUCING



**STICK WALL LAMP**  
BRONZE  
PLATED METAL / ACRYLIC  
NO 231053  
L11,5 / W5,7 / H30,5 CM  
1 PCS

INTRODUCING



**STICK TABLE LAMP**  
BRONZE  
PLATED METAL / ACRYLIC  
NO 231051  
L10 / W6,1 / H30,5 CM  
1 PCS



**PIVOT TABLE LAMP**  
BRONZE  
PLATED METAL  
NO 211005  
L10,5 / W10,5 / H19 CM  
1 PCS



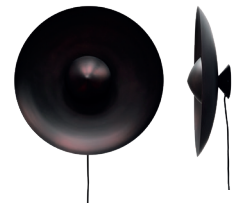
**BULLET CHANDELIER**  
BRONZE  
PLATED METAL  
NO 213051  
L125 / W110 / H32 CM  
1 PCS



**BULLET PENDANT**  
BRONZE  
PLATED METAL  
NO 213053  
L94 / W6,5 / H71,5 CM  
1 PCS



**BULLET WALL LAMP**  
BRONZE  
PLATED METAL  
NO 213052  
L6,5 / W7,5 / H45 CM  
1 PCS



**DUSK WALL LAMP**  
BURNED BLACK  
PLATED METAL  
NO 223022  
L50 / W50 / H17,5 CM  
1 PCS

## LIGHT BULB

---



**PYGMY**  
E14  
MATT PORCELAIN  
NO 201  
L2,8 / W2,8 / H6,5 CM  
1 PCS

# FURNITURE

---



**BRUTUS DINING  
CHAIR - COFFEE**  
FIBER CONCRETE

NO 201005  
L68 / W50 / H68 CM  
1 PCS



**BRUTUS DINING  
CHAIR - BONE WHITE**  
FIBER CONCRETE

NO 221023  
L68 / W50 / H68 CM  
1 PCS



**BRUTUS DINING  
CHAIR - SAND**  
FIBER CONCRETE

NO 212011  
L68 / W50 / H68 CM  
1 PCS



**BRUTUS SLIM DINING  
CHAIR - COFFEE**  
FIBER CONCRETE

NO 223011  
L52 / W43 / H78,5 CM  
1 PCS

---



**BRUTUS LOUNGE  
CHAIR - COFFEE**  
FIBER CONCRETE

NO 201006  
L91 / W61 / H61 CM  
1 PCS



**BRUTUS LOUNGE  
CHAIR - BONE WHITE**  
FIBER CONCRETE

NO 221024  
L91 / W61 / H61 CM  
1 PCS



**BRUTUS LOUNGE  
CHAIR - SAND**  
FIBER CONCRETE

NO 212012  
L91 / W61 / H61 CM  
1 PCS



**BRUTUS LOUNGE  
CHAIR - DARK GREY**  
FIBER CONCRETE

NO 213033  
L91 / W61 / H61 CM  
1 PCS

---



**BRUTUS COFFEE TABLE**  
COFFEE  
FIBER CONCRETE

NO 201007  
L60 / W60 / H36 CM  
1 PCS



**BRUTUS COFFEE TABLE**  
BONE WHITE  
FIBER CONCRETE

NO 221025  
L60 / W60 / H36 CM  
1 PCS



**BRUTUS COFFEE TABLE**  
SAND  
FIBER CONCRETE

NO 213030  
L60 / W60 / H36 CM  
1 PCS



**BRUTUS COFFEE TABLE**  
DARK GREY  
FIBER CONCRETE

NO 213031  
L60 / W60 / H36 CM  
1 PCS

---



**BRUTUS STOOL**  
COFFEE  
FIBER CONCRETE

NO 214012  
L60 / W30 / H54 CM  
1 PCS



**BRUTUS STOOL**  
BONE WHITE  
FIBER CONCRETE

NO 223014  
L60 / W30 / H54 CM  
1 PCS



**BRUTUS DINING  
CUSHION - CHARCOAL  
LINEN**

NO 213034  
L44 / W36 / H4 CM  
1 PCS



**BRUTUS LOUNGE  
CUSHION - CHARCOAL  
LINEN**

NO 213035  
L51 / W46 / H4 CM  
1 PCS

---

# FURNITURE

INTRODUCING

INTRODUCING

INTRODUCING



**TOE CHAIR**  
OFF WHITE  
BOUCLÉ  
NO 223015  
L70 / W80 / H72 CM  
1 PCS

**TOE CHAIR**  
WHITE CHALK  
LINEN  
NO 231043  
L70 / W80 / H72 CM  
1 PCS

**TRIBU STOOL**  
COFFEE / WHITE CHALK  
FIBER CONCRETE / LINEN  
NO 231042  
L40 / W40 / H47,5 CM  
1 PCS

**TRIBU BENCH**  
COFFEE / WHITE CHALK  
FIBER CONCRETE / LINEN  
NO 231041  
L122 / W40 / H47,5 CM  
1 PCS



**BIG FOOT STOOL**  
WHITE CHALK  
LINEN  
NO 211002  
L38 / W38 / H43 CM  
1 PCS

**BIG FOOT STOOL**  
WHITE  
SHEEP SKIN  
NO 201018  
L38 / W38 / H43 CM  
1 PCS

**BIG FOOT BENCH**  
WHITE  
SHEEPSKIN  
NO 221021  
L120 / W45 / H50 CM  
1 PCS



**BIG FOOT COFFEE TABLE - COFFEE**  
FIBER CONCRETE  
NO 212014  
L110 / W110 / H39 CM  
1 PCS

**BIG FOOT BENCH COFFEE**  
FIBER CONCRETE  
NO 212013  
L120 / W40 / H45 CM  
1 PCS

**BIG FOOT TABLE LOW**  
COFFEE  
FIBER CONCRETE  
NO 211004  
L65 / W65 / H43 CM  
1 PCS

**BIG FOOT TABLE TALL**  
COFFEE  
FIBER CONCRETE  
NO 211003  
L45 / W45 / H51 CM  
1 PCS



**ARC CONSOLE**  
CALACATTA / COFFEE  
MARBLE / FIBER CONCRETE  
NO 223093  
L70 / W33,5 / H80 CM  
1 PCS

**ARC BENCH**  
COFFEE  
FIBER CONCRETE  
NO 223091  
L120 / W35 / H49 CM  
1 PCS

**ARC BENCH CUSHION**  
WHITE CHALK  
LINEN  
NO 223092  
L120 / W35 / H5 CM  
1 PCS

**KAMODO CHAIR**  
COFFEE  
FIBER CONCRETE  
NO 221022  
L54 / W62 / H72 CM  
1 PCS

# FURNITURE

---



**TAIRU TABLE**  
STRIPED - COFFEE  
MARBLE / FIBER CONCRETE  
NO 223097  
L38 / W38 / H45 CM  
1 PCS



**TAIRU TABLE**  
CALACATTA - COFFEE  
MARBLE / FIBER CONCRETE  
NO 223096  
L38 / W38 / H45 CM  
1 PCS



**TRUMPET TABLE TALL**  
CALACATTA - COFFEE  
MARBLE / FIBER CONCRETE  
NO 223095  
L35 / W35 / H40 CM  
1 PCS



**TRUMPET TABLE LOW**  
CALACATTA - COFFEE  
MARBLE / FIBER CONCRETE  
NO 223094  
L45 / W45 / H35 CM  
1 PCS



**BOW CONSOLE**  
COFFEE  
FIBER CONCRETE  
NO 223030  
L70 / W31 / H80 CM  
1 PCS



**BOW BENCH**  
COFFEE  
FIBER CONCRETE  
NO 214013  
L70 / W30 / H43 CM  
1 PCS



**PHANTOM TABLE LOW**  
BURN ANTIQUE  
CAST IRON  
NO 111253  
L50 / W50 / H35 CM  
2 PCS



**PHANTOM TABLE TALL**  
BURN ANTIQUE  
CAST IRON  
NO 111251  
L40 / W40 / H50 CM  
2 PCS



**COLUMN TABLE**  
COFFEE  
FIBER CONCRETE  
NO 223016  
L25 / W25 / H50 CM  
1 PCS



**COLUMN TABLE**  
BONE WHITE  
FIBER CONCRETE  
NO 223017  
L25 / W25 / H50 CM  
1 PCS



**COLUMN TABLE**  
SAND  
FIBER CONCRETE  
NO 223018  
L25 / W25 / H50 CM  
1 PCS



**COLUMN TABLE**  
MARBLE  
NO 221028  
L25 / W25 / H50 CM  
1 PCS



**SCULPT STOOL**  
CONCRETE  
FIBER CONCRETE  
NO 111155  
L45 / W45 / H45 CM  
1 PCS



**CUSHION / SCULPT**  
COGNAC  
LEATHER  
NO 111154  
L42 / W43 / H3 CM  
1 PCS



**CROSS**  
MARBLE  
NO 214011  
L35 / W35 / H45 CM  
1 PCS



# FURNITURE

---



**CROWN TABLE TALL**  
COFFEE  
FIBER CONCRETE  
NO 214015  
L44,5 / W 44,5 / H50 CM  
1 PCS



**CROWN TABLE LOW**  
COFFEE  
FIBER CONCRETE  
NO 214014  
L65,5 / W65,5 / H41 CM  
1 PCS



**CROWN TABLE TALL**  
BONE WHITE  
FIBER CONCRETE  
NO 214017  
L44,5 / W44,5 / H50 CM  
1 PCS



**CROWN TABLE LOW**  
BONE WHITE  
FIBER CONCRETE  
NO 214016  
L65,5 / W65,5 / H41 CM  
1 PCS

---



**CROWN TABLE TALL**  
BURNED BLACK  
METAL  
NO 221026  
L44,5 / W 44,5 / H50 CM  
1 PCS



**CROWN TABLE LOW**  
BURNED BLACK  
METAL  
NO 221027  
L65,5 / W65,5 / H41 CM  
1 PCS



**SPIDER TABLE**  
COFFEE  
FIBER CONCRETE  
NO 223012  
L35 / W35 / H45 CM  
1 PCS

---



**PILLAR TABLE TALL**  
BRASS  
PLATED METAL  
NO 201024  
L45 / W45 / H50 CM  
1 PCS



**PILLAR TABLE LOW**  
BRASS  
PLATED METAL  
NO 201023  
L65 / W65 / H41 CM  
1 PCS



**PILLAR TABLE TALL**  
BURNED BLACK  
PLATED METAL  
NO 201026  
L45 / W45 / H50 CM  
1 PCS



**PILLAR TABLE LOW**  
BURNED BLACK  
PLATED METAL  
NO 201025  
L65 / W65 / H41 CM  
1 PCS

---



**PODIUM - MAXI**  
COFFEE  
FIBER CONCRETE  
NO 212023  
L30,5 / W30,5 / H80 CM  
1 PCS



**PODIUM - MEDIO**  
COFFEE  
FIBER CONCRETE  
NO 212022  
L30,5 / W30,5 / H55 CM  
1 PCS



**PODIUM - MINI**  
COFFEE  
FIBER CONCRETE  
NO 212021  
L30,5 / W30,5 / H30,5 CM  
1 PCS

---

# KNOBS

---



**HIHAT KNOBS MINI**  
SET OF 2  
BRASS  
NO 214061  
L3,5 / W3,5 / H6 CM  
4 SETS



**HIHAT KNOBS MEDIO**  
SET OF 2  
BRASS  
NO 214062  
L4,5 / W4,5 / H6 CM  
4 SETS



**HIHAT KNOBS MAXI**  
SET OF 2  
BRASS  
NO 214063  
L6 / W6 / H7 CM  
4 SETS

---



**HIHAT KNOBS MINI**  
SET OF 2  
BRONZE  
NO 214064  
L3,5 / W3,5 / H6 CM  
4 SETS



**HIHAT KNOBS MEDIO**  
SET OF 2  
BRONZE  
NO 214065  
L4,5 / W4,5 / H6 CM  
4 SETS



**HIHAT KNOBS MAXI**  
SET OF 2  
BRONZE  
NO 214066  
L6 / W6 / H7 CM  
4 SETS

---



**HIHAT KNOBS MINI**  
SET OF 2  
BRUSHED STEEL  
NO 223004  
L3,5 / W3,5 / H6 CM  
4 SETS



**HIHAT KNOBS MEDIO**  
SET OF 2  
BRUSHED STEEL  
NO 223005  
L4,5 / W4,5 / H6 CM  
4 SETS



**HIHAT KNOBS MAXI**  
SET OF 2  
BRUSHED STEEL  
NO 223006  
L6 / W6 / H7 CM  
4 SETS

---



**HIHAT KNOBS MINI**  
SET OF 2  
BURNED BLACK  
NO 223001  
L3,5 / W3,5 / H6 CM  
4 SETS



**HIHAT KNOBS MEDIO**  
SET OF 2  
BURNED BLACK  
NO 223002  
L4,5 / W4,5 / H6 CM  
4 SETS



**HIHAT KNOBS MAXI**  
SET OF 2  
BURNED BLACK  
NO 223003  
L6 / W6 / H7 CM  
4 SETS

---

# ART

---



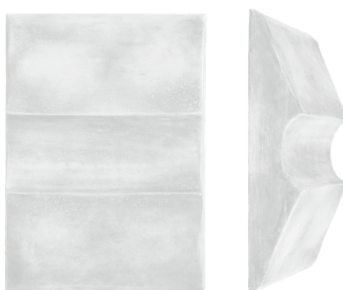
**SCULPT ART WAVE - BIG**  
DARK GREY  
SUSTAINABLE PAPER MASS

NO 221053  
L80 / W15 / H120 CM  
1 PCS



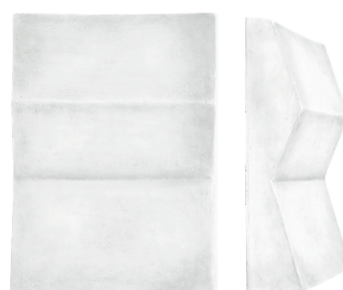
**SCULPT ART FACE - BIG**  
DARK GREY  
SUSTAINABLE PAPER MASS

NO 221051  
L80 / W15 / H120 CM  
1 PCS



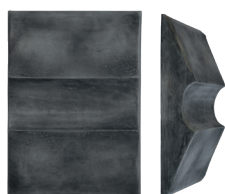
**SCULPT ART WAVE - BIG**  
CHALK WHITE  
SUSTAINABLE PAPER MASS

NO 221054  
L80 / W15 / H120 CM  
1 PCS



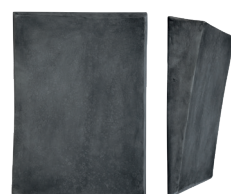
**SCULPT ART FACE - BIG**  
CHALK WHITE  
SUSTAINABLE PAPER MASS

NO 221052  
L80 / W15 / H120 CM  
1 PCS



**SCULPT ART WAVE - MINI**  
DARK GREY  
SUSTAINABLE PAPER MASS

NO 203053  
L37,5 / W10 / H52 CM  
1 PCS



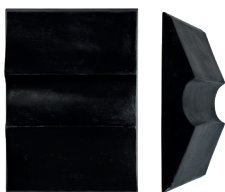
**SCULPT ART TRIANGLE - MINI**  
DARK GREY  
SUSTAINABLE PAPER MASS

NO 203051  
L37,5 / W10 / H52 CM  
1 PCS



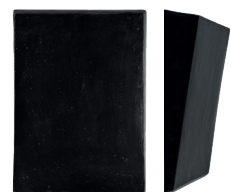
**SCULPT ART FACE - MINI**  
DARK GREY  
SUSTAINABLE PAPER MASS

NO 203055  
L37,5 / W10 / H52 CM  
1 PCS



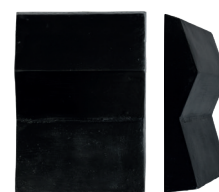
**SCULPT ART WAVE - MINI**  
COFFEE  
SUSTAINABLE PAPER MASS

NO 203052  
L37,5 / W10 / H52 CM  
1 PCS



**SCULPT ART TRIANGLE - MINI**  
COFFEE  
SUSTAINABLE PAPER MASS

NO 203050  
L37,5 / W10 / H52 CM  
1 PCS

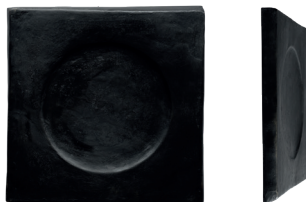


**SCULPT ART FACE - MINI**  
COFFEE  
SUSTAINABLE PAPER MASS

NO 203054  
L37,5 / W10 / H52 CM  
1 PCS



**SCULPT ART BUBBLE**  
COFFEE  
SUSTAINABLE PAPER MASS  
NO 213004  
L58 / W12,5 / H58 CM  
1 PCS



**SCULPT ART - VOID**  
COFFEE  
SUSTAINABLE PAPER MASS  
NO 213006  
L58 / W4 / H58 CM  
1 PCS



**SCULPT ART - SHIELD**  
COFFEE  
SUSTAINABLE PAPER MASS  
NO 213005  
L58 / W6 / H58 CM  
1 PCS

---



**SCULPT ART - BUBBLE**  
CHALK WHITE  
SUSTAINABLE PAPER MASS  
NO 213001  
L58 / W12,5 / H58 CM  
1 PCS



**SCULPT ART - VOID**  
CHALK WHITE  
SUSTAINABLE PAPER MASS  
NO 213003  
L58 / W4 / H58 CM  
1 PCS



**SCULPT ART - SHIELD**  
CHALK WHITE  
SUSTAINABLE PAPER MASS  
NO 213002  
L58 / W6 / H58 CM  
1 PCS

---

## PLANT POTS

INTRODUCING



**URCHIN PLANT POT,  
BIG - COFFEE  
FIBER CONCRETE**

NO 231001  
L56/ W56 / H40 CM  
1 PCS

INTRODUCING



**URCHIN PLANT POT,  
MEDIO - COFFEE  
FIBER CONCRETE**

NO 231002  
L46,5 / W46,5 / H32 CM  
1 PCS

INTRODUCING



**URCHIN PLANT POT,  
MINI - COFFEE  
FIBER CONCRETE**

NO 231003  
L35 / W35 / H24,5 CM  
2 PCS

INTRODUCING

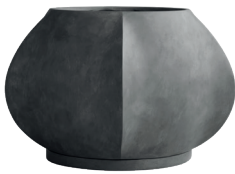


**URCHIN PLANT POT,  
PETIT - COFFEE  
FIBER CONCRETE**

NO 231004  
L17 / W17 / H12,5 CM  
4 PCS



INTRODUCING



**ARKET PLANT POT,  
BIG - DARK GREY  
FIBER CONCRETE**

NO 231005  
L64/ W64 / H40 CM  
1 PCS

INTRODUCING



**ARKET PLANT POT  
MEDIO - DARK GREY  
FIBER CONCRETE**

NO 231006  
L52,5 / W52,5 / H33 CM  
1 PCS

INTRODUCING



**ARKET PLANT POT,  
MINI - DARK GREY  
FIBER CONCRETE**

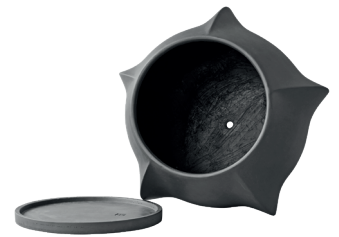
NO 231007  
L39,5 / W39,5 / H25 CM  
2 PCS

INTRODUCING



**ARKET PLANT POT,  
PETIT - DARK GREY  
FIBER CONCRETE**

NO 231008  
L19,8 / W19,8 / H12,8 CM  
4 PCS



## VASES & TRAYS



**MEDUSA VASE - BIG  
COFFEE  
CERAMIC**

NO 221061  
L35 / W35 / H26 CM  
1 PCS



**MEDUSA VASE - MINI  
COFFEE  
CERAMIC**

NO 221062  
L20 / W20 / H15 CM  
2 PCS



**MEDUSA TRAY - BIG  
COFFEE  
CERAMIC**

NO 221063  
L45 / W45 / H14 CM  
1 PCS



**MEDUSA TRAY - MINI  
COFFEE  
CERAMIC**

NO 221064  
L30 / W30 / H9 CM  
2 PCS

# VASES

---



**COBRA DOUBLE HEXA**  
BLACK  
CERAMIC  
NO 211031  
L43 / W12 / H59 CM  
1 PCS



**COBRA TALL HEXA**  
BLACK  
CERAMIC  
NO 211030  
L39 / W13 / H62 CM  
1 PCS



**COBRA DOUBLE MEDIO**  
BLACK  
CERAMIC  
NO 212006  
L34 / W10 / H47 CM  
2 PCS



**COBRA TALL MEDIO**  
BLACK  
CERAMIC  
NO 212007  
L28 / W10 / H45 CM  
2 PCS



**COBRA UNO MEDIO**  
BLACK  
CERAMIC  
NO 212005  
L30 / W10 / H25 CM  
2 PCS

---



**COBRA FAT MEDIO**  
BLACK  
CERAMIC  
NO 212004  
L35 / W10 / H17 CM  
2 PCS



**COBRA DOUBLE MINI**  
BLACK  
CERAMIC  
NO 203025  
L22 / W6,5 / H28 CM  
2 PCS



**COBRA TALL MINI**  
BLACK  
CERAMIC  
NO 203023  
L18 / W6,5 / H23 CM  
2 PCS



**COBRA UNO MINI**  
BLACK  
CERAMIC  
NO 203024  
L18 / W6,5 / H16,5 CM  
2 PCS

---



**COBRA DOUBLE MEDIO**  
BUBBLE WHITE  
CERAMIC  
NO 201013  
L34 / W10 / H47 CM  
2 PCS



**COBRA TALL MEDIO**  
BUBBLE WHITE  
CERAMIC  
NO 201010  
L28 / W10 / H45 CM  
2 PCS



**COBRA UNO MEDIO**  
BUBBLE WHITE  
CERAMIC  
NO 201012  
L30 / W10 / H25 CM  
2 PCS



**COBRA FAT MEDIO**  
BUBBLE WHITE  
CERAMIC  
NO 201011  
L35 / W10 / H17 CM  
2 PCS

---



**COBRA DOUBLE MINI**  
BUBBLE WHITE  
CERAMIC  
NO 203022  
L22 / W6,5 / H28 CM  
2 PCS



**COBRA TALL MINI**  
BUBBLE WHITE  
CERAMIC  
NO 203020  
L18 / W6,5 / H23 CM  
2 PCS



**COBRA UNO MINI**  
BUBBLE WHITE  
CERAMIC  
NO 203021  
L18 / W6,5 / H16,5 CM  
2 PCS

---

## VASES

---



**COBRA DOUBLE MEDIO**  
COFFEE  
CERAMIC  
NO 211037  
L34 / W10 / H47 CM  
2 PCS



**COBRA TALL MEDIO**  
COFFEE  
CERAMIC  
NO 211038  
L28 / W10 / H45 CM  
2 PCS



**COBRA UNO MEDIO**  
COFFEE  
CERAMIC  
NO 211036  
L30 / W10 / H25 CM  
2 PCS



**COBRA FAT MEDIO**  
COFFEE  
CERAMIC  
NO 211035  
L35 / W10 / H17 CM  
2 PCS

---



**COBRA DOUBLE MINI**  
COFFEE  
CERAMIC  
NO 212002  
L22 / W6,5 / H28 CM  
2 PCS



**COBRA TALL MINI**  
COFFEE  
CERAMIC  
NO 212003  
L18 / W6,5 / H23 CM  
2 PCS



**COBRA UNO MINI**  
COFFEE  
CERAMIC  
NO 212001  
L18 / W6,5 / H16,5 CM  
2 PCS

---



**COBRA DOUBLE MINI**  
DARK GREY  
CERAMIC  
NO 211033  
L22 / W6,5 / H28 CM  
2 PCS



**COBRA TALL MINI**  
DARK GREY  
CERAMIC  
NO 211034  
L18 / W6,5 / H23 CM  
2 PCS



**COBRA UNO MINI**  
DARK GREY  
CERAMIC  
NO 211032  
L18 / W6,5 / H16,5 CM  
2 PCS

---

## VASES & BOWL

---



**GUGGENHEIM BIG**  
BLACK  
CERAMIC  
NO 203004  
L49 / W27 / H45 CM  
1 PCS



**GUGGENHEIM BIG**  
DARK GREY  
CERAMIC  
NO 111125  
L49 / W27 / H45 CM  
1 PCS



**GUGGENHEIM BIG**  
COFFEE  
CERAMIC  
NO 111219  
L49 / W27 / H45 CM  
1 PCS



**GUGGENHEIM MINI**  
BLACK  
CERAMIC  
NO 111126  
L32 / W7 / H34 CM  
2 PCS



**GUGGENHEIM MINI**  
DARK GREY  
CERAMIC  
NO 203005  
L32 / W7 / H34 CM  
2 PCS



**GUGGENHEIM MINI**  
COFFEE  
CERAMIC  
NO 111220  
L32 / W7 / H34 CM  
2 PCS



**GUGGENHEIM PETIT**  
BLACK  
CERAMIC  
NO 213042  
L23 / W12 / H23 CM  
2 PCS



**GUGGENHEIM PETIT**  
BONE WHITE  
CERAMIC  
NO 213043  
L23 / W12 / H23 CM  
2 PCS



**SUBMARINE VASE**  
**BIG** - LIGHT GREY  
CERAMIC  
NO 111287  
L45 / W40 / H50 CM  
1 PCS



**SUBMARINE VASE**  
**SMALL** - DARK GREY  
CERAMIC  
NO 111288  
L30 / W24 / H25 CM  
1 PCS



**SUBMARINE VASE**  
**FAT** - DARK GREY  
CERAMIC  
NO 111289  
L60 / W40 / H22 CM  
1 PCS



**OSAKA BOWL BIG**  
COFFEE  
CONCRETE  
NO 111209  
L25 / W25 / H22 CM  
2 PCS



**OFFSET VASE BIG**  
DARK GREY  
CONCRETE  
NO 111213  
L60 / W40 / H48 CM  
1 PCS



**OFFSET VASE BIG**  
COFFEE  
CONCRETE  
NO 211016  
L60 / W40 / H48 CM  
1 PCS



**OFFSET VASE MINI**  
DARK GREY  
CONCRETE  
NO 111214  
L38 / W28 / H30 CM  
1 PCS



**OFFSET VASE MINI**  
COFFEE  
CONCRETE  
NO 211017  
L38 / W28 / H30 CM  
1 PCS



# VASES

---



**SUMO VASE - BIG**  
BONE WHITE  
CONCRETE  
NO 213015  
L45 / W45 / H45 CM  
1 PCS



**SUMO VASE - MINI**  
BONE WHITE  
CERAMIC  
NO 213016  
L25 / W25 / H25 CM  
2 PCS



**SUMO VASE - PETIT**  
BONE WHITE  
CERAMIC  
NO 223062  
L15 / W15 / H15 CM  
2 PCS



**SUMO VASE - HORNS**  
BONE WHITE  
CERAMIC  
NO 213017  
L25 / W25 / H27 CM  
2 PCS

---



**SUMO VASE - SLIM**  
BONE WHITE  
CERAMIC  
NO 213018  
L24 / W24 / H38 CM  
2 PCS



**SUMO VASE - SLIM PETIT**  
BONE WHITE  
CERAMIC  
NO 223064  
L14 / W14 / H21,5 CM  
2 PCS

---



**SUMO VASE - BIG**  
COFFEE  
CONCRETE  
NO 213011  
L45 / W45 / H45 CM  
1 PCS



**SUMO VASE - MINI**  
COFFEE  
CERAMIC  
NO 213012  
L25 / W25 / H25 CM  
2 PCS



**SUMO VASE - PETIT**  
COFFEE  
CERAMIC  
NO 223061  
L15 / W15 / H15 CM  
2 PCS



**SUMO VASE - HORNS**  
COFFEE  
CERAMIC  
NO 213013  
L25 / W25 / H27 CM  
2 PCS

---



**SUMO VASE - SLIM**  
COFFEE  
CERAMIC  
NO 213014  
L24 / W24 / H38 CM  
2 PCS



**SUMO VASE - SLIM PETIT**  
COFFEE  
CERAMIC  
NO 223063  
L14 / W14 / H21,5 CM  
2 PCS

---

## VASES, BOWLS & TRAYS

---



**BABURU BOWL BIG**  
BONE WHITE  
CERAMIC  
NO 223041  
L43 / W43 / H18 CM  
2 PCS



**BABURU BOWL MEDIO**  
BONE WHITE  
CERAMIC  
NO 223043  
L30 / W30 / H15 CM  
2 PCS



**BABURU BOWL MINI**  
BONE WHITE  
CERAMIC  
NO 223045  
L20 / W20 / H10 CM  
2 PCS

---



**BABURU BOWL BIG**  
BLACK  
CERAMIC  
NO 223042  
L43 / W43 / H18 CM  
2 PCS



**BABURU BOWL MEDIO**  
BLACK  
CERAMIC  
NO 223044  
L30 / W30 / H15 CM  
2 PCS



**BABURU BOWL MINI**  
BLACK  
CERAMIC  
NO 223046  
L20 / W20 / H10 CM  
2 PCS

---



**BLOOM VASE - BIG**  
BONE WHITE  
CONCRETE  
NO 221042  
L55 / W55 / H44 CM  
1 PCS



**BLOOM VASE - MINI**  
BONE WHITE  
CERAMIC  
NO 221041  
L35 / W35 / H27 CM  
2 PCS



**BLOOM TRAY - BIG**  
BONE WHITE  
CERAMIC  
NO 221044  
L43,5 / W43,5 / H16 CM  
2 PCS



**BLOOM TRAY - MINI**  
BONE WHITE  
CERAMIC  
NO 221043  
L15 / W15 / H6 CM  
2 PCS

---



**BLOOM VASE - BIG**  
DARK GREY  
CONCRETE  
NO 221046  
L55 / W55 / H44 CM  
1 PCS



**BLOOM VASE - MINI**  
DARK GREY  
CERAMIC  
NO 221045  
L35 / W35 / H27 CM  
2 PCS



**BLOOM TRAY - BIG**  
DARK GREY  
CERAMIC  
NO 221048  
L43,5 / W43,5 / H16 CM  
2 PCS



**BLOOM TRAY - MINI**  
DARK GREY  
CERAMIC  
NO 221047  
L15 / W15 / H6 CM  
2 PCS

---

# VASES

---



**TRIBAL VASE - BIG**  
TERRACOTTA  
CERAMIC  
NO 214006  
L35 / W71,5 / H45 CM  
1 PCS



**TRIBAL VASE - BIG**  
DARK GREY  
CERAMIC  
NO 214005  
L35 / W71,5 / H45 CM  
1 PCS



**TRIBAL VASE - BIG**  
BONE WHITE  
CERAMIC  
NO 221005  
L35 / W71,5 / H45 CM  
1 PCS



**TRIBAL VASE - BIG**  
SAND  
CERAMIC  
NO 221006  
L35 / W71,5 / H45 CM  
1 PCS

---



**TRIBAL VASE - MEDIO**  
TERRACOTTA  
CERAMIC  
NO 214004  
L24 / W10 / H30 CM  
2 PCS



**TRIBAL VASE - MEDIO**  
DARK GREY  
CERAMIC  
NO 214003  
L35 / W71,5 / H45 CM  
2 PCS



**TRIBAL VASE - MEDIO**  
BONE WHITE  
CERAMIC  
NO 221003  
L35 / W71,5 / H45 CM  
2 PCS



**TRIBAL VASE - MEDIO**  
SAND  
CERAMIC  
NO 221004  
L35 / W71,5 / H45 CM  
2 PCS

---



**TRIBAL VASE - MINI**  
TERRACOTTA  
CERAMIC  
NO 214002  
L21 / W9 / H25,5 CM  
2 PCS



**TRIBAL VASE - MINI**  
DARK GREY  
CERAMIC  
NO 214001  
L35 / W71,5 / H45 CM  
2 PCS



**TRIBAL VASE - MINI**  
BONE WHITE  
CERAMIC  
NO 221001  
L21 / W9 / H25,5 CM  
2 PCS



**TRIBAL VASE - MINI**  
SAND  
CERAMIC  
NO 221002  
L35 / W71,5 / H45 CM  
2 PCS

---

# VASES

INTRODUCING  
LIMITED EDITION



**SPHERE VASE SQUARE  
SHISEN BIG - SAND  
CERAMIC**

NO 231015  
L33 / W17 / H44 CM  
1 PCS

INTRODUCING  
LIMITED EDITION



**SPHERE VASE BUBL  
SHISEN BIG - SAND  
CERAMIC**

NO 231017  
L31 / W14,5 / H44 CM  
1 PCS

INTRODUCING  
LIMITED EDITION



**SPHERE VASE BUBL  
SHISEN MEDIO - SAND  
CERAMIC**

NO 231018  
L18,5 / W8,5 / H25,5 CM  
4 PCS

INTRODUCING  
LIMITED EDITION



**SPHERE VASE SQUARE  
SHISEN MINI - SAND  
CERAMIC**

NO 231016  
L20 / W9 / H25 CM  
4 PCS

INTRODUCING  
LIMITED EDITION



**SPHERE VASE SQUARE  
SHISEN BIG - BONE WHITE  
CERAMIC**

NO 231011  
L33 / W17 / H44 CM  
1 PCS

INTRODUCING  
LIMITED EDITION



**SPHERE VASE BUBL  
SHISEN BIG - BONE WHITE  
CERAMIC**

NO 231013  
L31 / W14,5 / H44 CM  
1 PCS

INTRODUCING  
LIMITED EDITION



**SPHERE VASE BUBL  
SHISEN MEDIO - BONE WHITE  
CERAMIC**

NO 231014  
L18,5 / W8,5 / H25,5 CM  
4 PCS

INTRODUCING  
LIMITED EDITION



**SPHERE VASE SQUARE  
SHISEN MINI - BONE WHITE  
CERAMIC**

NO 231012  
L20 / W9 / H25 CM  
4 PCS



**SPHERE VASE SQUARE  
HEXA - SAND  
CERAMIC**

NO 203014  
L50 / W18 / H60 CM  
1 PCS



**SPHERE VASE SQUARE  
HEXA - BLACK  
CERAMIC**

NO 203013  
L50 / W18 / H60 CM  
1 PCS



**SPHERE VASE SQUARE  
BIG - BLACK  
CERAMIC**

NO 213021  
L33 / W16 / H43 CM  
1 PCS



**SPHERE VASE SQUARE  
BIG - BONE WHITE  
CERAMIC**

NO 221011  
L33 / W16 / H43 CM  
1 PCS



**SPHERE VASE SQUARE  
BIG - COFFEE  
CERAMIC**

NO 111183  
L33 / W16 / H43 CM  
1 PCS



**SPHERE VASE SQUARE  
BIG - SAND  
CERAMIC**

NO 111028  
L33 / W16 / H43 CM  
1 PCS



**SPHERE VASE SQUARE  
BIG - DARK GREY  
CERAMIC**

NO 211221  
L33 / W16 / H43 CM  
1 PCS



**SPHERE VASE SQUARE  
BIG - BUBBLE WHITE  
CERAMIC**

NO 202001  
L33 / W16 / H43 CM  
1 PCS



**SPHERE VASE SQUARE  
BIG - TERRACOTTA  
CERAMIC**

NO 212008  
L33 / W16 / H43 CM  
1 PCS

# VASES

---



**SPHERE VASE SQUARE  
MINI - BLACK  
CERAMIC**

NO 213022  
L20 / W9 / H25 CM  
4 PCS



**SPHERE VASE SQUARE  
MINI - BONE WHITE  
CERAMIC**

NO 221012  
L20 / W9 / H25 CM  
4 PCS



**SPHERE VASE SQUARE  
MINI - TERACOTTA  
CERAMIC**

NO 111182  
L20 / W9 / H25 CM  
4 PCS



**SPHERE VASE SQUARE  
MINI - DARK GREY  
CERAMIC**

NO 111020  
L20 / W9 / H25 CM  
4 PCS



**SPHERE VASE SQUARE  
MINI - SAND  
CERAMIC**

NO 111204  
L20 / W9 / H25 CM  
4 PCS

---



**SPHERE VASE SQUARE  
MINI - COFFEE  
CERAMIC**

NO 111021  
L20 / W9 / H25 CM  
4 PCS



**SPHERE VASE SQUARE  
MINI - OCHER  
CERAMIC**

NO 111181  
L20 / W9 / H25 CM  
4 PCS



**SPHERE VASE SQUARE  
MINI - TAUPE  
CERAMIC**

NO 203011  
L20 / W9 / H25 CM  
4 PCS



**SPHERE VASE SQUARE  
MINI - BUBBLE WHITE  
CERAMIC**

NO 202002  
L20 / W9 / H25 CM  
4 PCS

---



**SPHERE VASE BUBL  
MEDIO - BUBBLE WHITE  
CERAMIC**

NO 202004  
L18 / W8 / H26 CM  
4 PCS



**SPHERE VASE BUBL  
MEDIO - BLACK  
CERAMIC**

NO 213023  
L18 / W8 / H26 CM  
4 PCS



**SPHERE VASE BUBL  
MEDIO - BONE WHITE  
CERAMIC**

NO 221013  
L18 / W8 / H26 CM  
4 PCS



**SPHERE VASE BUBL  
MEDIO - COFFEE  
CERAMIC**

NO 111193  
L18 / W8 / H26 CM  
4 PCS



**SPHERE VASE BUBL  
MEDIO - DARK GREY  
CERAMIC**

NO 211220  
L18 / W8 / H26 CM  
4 PCS

---



**SPHERE VASE BUBL  
MEDIO - TAUPE  
CERAMIC**

NO 111174  
L18 / W8 / H26 CM  
4 PCS



**SPHERE VASE BUBL  
MEDIO - SAND  
CERAMIC**

NO 111025  
L18 / W8 / H26 CM  
4 PCS



**SPHERE VASE BUBL  
MEDIO - OCHER  
CERAMIC**

NO 203007  
L18 / W8 / H26 CM  
4 PCS



**SPHERE VASE BUBL  
MEDIO - TERACOTTA  
CERAMIC**

NO 111173  
L18 / W8 / H26 CM  
4 PCS

---

# VASES

---



**SPHERE VASE BUBL  
MINI - BONE WHITE  
CERAMIC**

NO 221014  
L13 / W6 / H18 CM  
4 PCS



**SPHERE VASE BUBL  
MINI - SAND  
CERAMIC**

NO 203008  
L13 / W6 / H18 CM  
4 PCS



**SPHERE VASE BUBL  
MINI - DARK GREY  
CERAMIC**

NO 111029  
L13 / W6 / H18 CM  
4 PCS



**SPHERE VASE BUBL  
MINI - BLACK  
CERAMIC**

NO 213024  
L13 / W6 / H18 CM  
4 PCS



**SPHERE VASE BUBL  
MINI - OCHER  
CERAMIC**

NO 111180  
L13 / W6 / H18 CM  
4 PCS

---



**SPHERE VASE BUBL  
MINI - TAUPE  
CERAMIC**

NO 111176  
L13 / W6 / H18 CM  
4 PCS



**SPHERE VASE BUBL  
MINI - COFFEE  
CERAMIC**

NO 111030  
L13 / W6 / H18 CM  
4 PCS



**SPHERE VASE BUBL  
MINI - TERRACOTTA  
CERAMIC**

NO 203010  
L13 / W6 / H18 CM  
4 PCS



**SPHERE VASE BUBL  
MINI - BUBBLE WHITE  
CERAMIC**

NO 202003  
L13 / W6 / H18 CM  
4 PCS

---



**SPHERE VASE BUBL  
HEXA - SAND  
CERAMIC**

NO 201016  
L42 / W18,5 / H60 CM  
1 PCS



**SPHERE VASE BUBL  
HEXA - DARK GREY  
CERAMIC**

NO 201017  
L42 / W18,5 / H60 CM  
1 PCS



**SPHERE VASE BUBL  
BIG - DARK GREY  
CERAMIC**

NO 201015  
L31,5 / W14 / H45 CM  
1 PCS



**SPHERE VASE BUBL  
BIG - SAND  
CERAMIC**

NO 201014  
L31,5 / W14 / H45 CM  
1 PCS

---

**SPHERE VASE BUBL  
GIANT - COFFEE  
CERAMIC**

NO 214007  
L75 / W33 / H100 CM  
1 PCS



**SPHERE VASE BUBL  
GIANT - SAND  
CERAMIC**

NO 221039  
L75 / W33 / H100 CM  
1 PCS



## VASES, TRAYS & PLATES

---



**KABIN VASE FAT**  
BLACK  
CERAMIC

NO 213046  
L35 / W35 / H25 CM  
2 PCS



**KABIN VASE FAT**  
BONE WHITE  
CERAMIC

NO 213047  
L35 / W35 / H25 CM  
2 PCS



**KABIN VASE FAT**  
SAND  
CERAMIC

NO 111043  
L35 / W35 / H25 CM  
2 PCS



**KABIN VASE FAT**  
DEZATO SAND  
CERAMIC

NO 221065  
L35 / W35 / H25 CM  
2 PCS



**KABIN VASE FAT**  
SHISEN SAND  
CERAMIC

NO 223031  
L35 / W35 / H25 CM  
2 PCS



**KABIN VASE FAT**  
LAMELLA COFFEE  
CERAMIC

NO 221066  
L35 / W35 / H25 CM  
2 PCS



**DUCK VASE SLIM**  
COFFEE  
CERAMIC

NO 111280  
L17 / W17 / H45 CM  
2 PCS



**DUCK VASE SLIM**  
TERRACOTTA  
CERAMIC

NO 213044  
L17 / W17 / H45 CM  
2 PCS



**DUCK VASE FAT**  
DARK GREY  
CERAMIC

NO 111281  
L21 / W21 / H35,5 CM  
2 PCS



**DUCK VASE FAT**  
TAUPE  
CERAMIC

NO 213045  
L21 / W21 / H35,5 CM  
2 PCS



**DUCK TRAY BIG**  
COFFEE  
CONCRETE

NO 111282  
L60 / W60 / H10 CM  
1 PCS



**DUCK TRAY SMALL**  
COFFEE  
CONCRETE

NO 111283  
L43 / W43 / H8 CM  
2 PCS



**DUCK PLATE BIG**  
COFFEE  
CERAMIC

NO 214049  
L45 / W45 / H13 CM  
2 PCS



**DUCK PLATE MINI**  
COFFEE  
CERAMIC

NO 214048  
L30 / W30 / H9,5 CM  
2 PCS

## BOWLS & JARS

---



**DUCK BOWL BIG**  
COFFEE  
CERAMIC  
NO 111044  
L16 / W16 / H11 CM  
4 PCS



**DUCK BOWL BIG**  
DARK GREY  
CERAMIC  
NO 111284  
L16 / W16 / H11 CM  
4 PCS



**DUCK BOWL BIG**  
SAND  
CERAMIC  
NO 111036  
L16 / W16 / H11 CM  
4 PCS



**DUCK BOWL BIG**  
BONE WHITE  
CERAMIC  
NO 221015  
L16 / W16 / H11 CM  
4 PCS

---



**DUCK BOWL MINI**  
COFFEE  
CERAMIC  
NO 111203  
L12 / W12 / H9,5 CM  
4 PCS



**DUCK BOWL MINI**  
DARK GREY  
CERAMIC  
NO 203002  
L12 / W12 / H9,5 CM  
4 PCS



**DUCK BOWL MINI**  
SAND  
CERAMIC  
NO 203003  
L12 / W12 / H9,5 CM  
4 PCS



**DUCK BOWL MINI**  
BONE WHITE  
CERAMIC  
NO 221016  
L12 / W12 / H9,5 CM  
4 PCS

---



**DUCK JAR - MEDIO**  
COFFEE  
CERAMIC  
NO 214044  
L12 / W12 / H9,5 CM  
4 PCS



**DUCK JAR - MEDIO**  
SAND  
CERAMIC  
NO 214045  
L12 / W12 / H9,5 CM  
4 PCS



**DUCK JAR - MEDIO**  
BONE WHITE  
CERAMIC  
NO 214046  
L12 / W12 / H9,5 CM  
4 PCS



**DUCK JAR - MEDIO**  
DARK GREY  
CERAMIC  
NO 214047  
L12 / W12 / H9,5 CM  
4 PCS

---



**DUCK JAR - MINI**  
COFFEE  
CERAMIC  
NO 214040  
L8 / W8 / H6,5 CM  
4 PCS



**DUCK JAR - MINI**  
SAND  
CERAMIC  
NO 214041  
L8 / W8 / H6,5 CM  
4 PCS



**DUCK JAR - MINI**  
BONE WHITE  
CERAMIC  
NO 214042  
L8 / W8 / H6,5 CM  
4 PCS



**DUCK JAR - MINI**  
DARK GREY  
CERAMIC  
NO 214043  
L8 / W8 / H6,5 CM  
4 PCS

---



## VASES & BOWLS

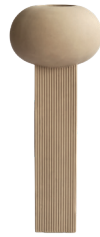
---



**EMPIRE VASE - BIG**  
DARK GREY  
CERAMIC  
NO 223034  
L24 / W24 / H59,5 CM  
1 PCS



**EMPIRE VASE - MINI**  
DARK GREY  
CERAMIC  
NO 223036  
L15 / W15 / H30 CM  
2 PCS



**EMPIRE VASE - BIG**  
SAND  
CERAMIC  
NO 223035  
L24 / W24 / H59,5 CM  
1 PCS



**EMPIRE VASE - MINI**  
SAND  
CERAMIC  
NO 223037  
L15 / W15 / H30 CM  
2 PCS

---



**WING BOWL BIG**  
COFFEE  
CERAMIC  
NO 214051  
L36 / W36 / H20 CM  
1 PCS



**WING BOWL BIG**  
BONE WHITE  
CERAMIC  
NO 221007  
L36 / W36 / H20 CM  
1 PCS



**WING BOWL BIG**  
SAND  
CERAMIC  
NO 221008  
L36 / W36 / H20 CM  
1 PCS

---



**WING BOWL MINI**  
COFFEE  
CERAMIC  
NO 214052  
L19 / W19 / H12 CM  
2 PCS



**WING BOWL MINI**  
BONE WHITE  
CERAMIC  
NO 221009  
L19 / W19 / H12 CM  
2 PCS



**WING BOWL MINI**  
SAND  
CERAMIC  
NO 221010  
L19 / W19 / H12 CM  
2 PCS

---



**KYOTO VASE BIG**  
COFFEE  
CERAMIC  
NO 201001  
L38 / W38 / H20 CM  
1 PCS



**KYOTO VASE MINI**  
COFFEE  
CERAMIC  
NO 201002  
L25 / W25 / H13,5 CM  
2 PCS

---

## CONCRETE

---



**LOTUS VASE - BIG**  
COFFEE  
FIBER CONCRETE  
NO 223033  
L55 / W55 / H60 CM  
1 PCS



**LOTUS VASE - MINI**  
COFFEE  
FIBER CONCRETE  
NO 223032  
L32 / W32 / H32 CM  
2 PCS



**GETA TRAY**  
COFFEE  
CONCRETE  
NO 211012  
L55 / W18 / H6,5  
2 PCS

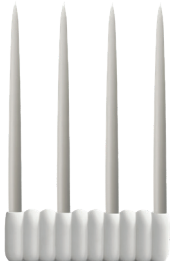


**OKA TRAY**  
COFFEE  
CONCRETE  
NO 201022  
L45 / W20 / H6 CM  
2 PCS

---

## CANDLE HOLDER

---



**TUBE CANDLE HOLDER**  
**BIG - BONE WHITE**  
CERAMIC  
NO 223074  
L35 / W6 / H11 CM  
2 PCS



**TUBE CANDLE HOLDER**  
**MINI - BONE WHITE**  
CERAMIC  
NO 223076  
L14,5 / W6 / H11 CM  
2 PCS



**TUBE CANDLE HOLDER**  
**BIG - COFFEE**  
CERAMIC  
NO 223073  
L35 / W6 / H11 CM  
2 PCS



**TUBE CANDLE HOLDER**  
**MINI - COFFEE**  
CERAMIC  
NO 223075  
L14,5 / W6 / H11 CM  
2 PCS

---



**BRICK CANDLE HOLDER**  
**TALL - CALACATTA**  
MARBLE  
NO 223077  
L12,5 / W5 / H10,5 CM  
2 PCS



**BRICK CANDLE HOLDER**  
**LOW - CALACATTA**  
MARBLE  
NO 223078  
L14 / W5 / H7,5 CM  
2 PCS



**COBRA CANDLE HOLDER**  
BLACK  
CERAMIC  
NO 223071  
L25 / W11 / H25 CM  
2 PCS



**COBRA CANDLE HOLDER**  
BONE WHITE  
CERAMIC  
NO 223072  
L25 / W11 / H25 CM  
2 PCS

---

---

---

---

---

---



GLOBAL SALES INQUIRIES: [SALES@101CPH.COM](mailto:SALES@101CPH.COM)

SUPPORT INQUIRIES: [SUPPORT@101CPH.COM](mailto:SUPPORT@101CPH.COM)

PRESS INQUIRIES: [PRESS@101CPH.COM](mailto:PRESS@101CPH.COM)



PRESS KIT & IMAGEBANK PLEASE GO TO:

[WWW.101CPH.COM](http://WWW.101CPH.COM) OR SCAN THE QR CODE AND GAIN ACCESS TO OUR IMAGE BANK, CATALOGUE AND MORE.

SHOWROOM BY APPOINTMENT ONLY // ØSTERGADE 17, 3RD & 4TH FLOOR, 1100 COPENHAGEN, DENMARK.